

► **2020 CENSUS AND
REDISTRICTING**

SAN MATEO-FOSTER CITY SCHOOL
DISTRICT

FEBRUARY 24, 2022



**COOPERATIVE
STRATEGIES**

ASSESS • PLAN • FUND • BUILD

► DISTRICT DEMOGRAPHICS

2020 CENSUS DATA



- Validated redistricting data was finalized by the California Department of Finance on September 27, 2021.
- This data showed substantial changes in the area served by San Mateo-Foster City School District ("SMFCSD") from 2010 to 2020, including:
 - Overall population growth of over 11,568 (9%)
 - Total Variance of 9.75% based on 2020 Census (*In Compliance*)

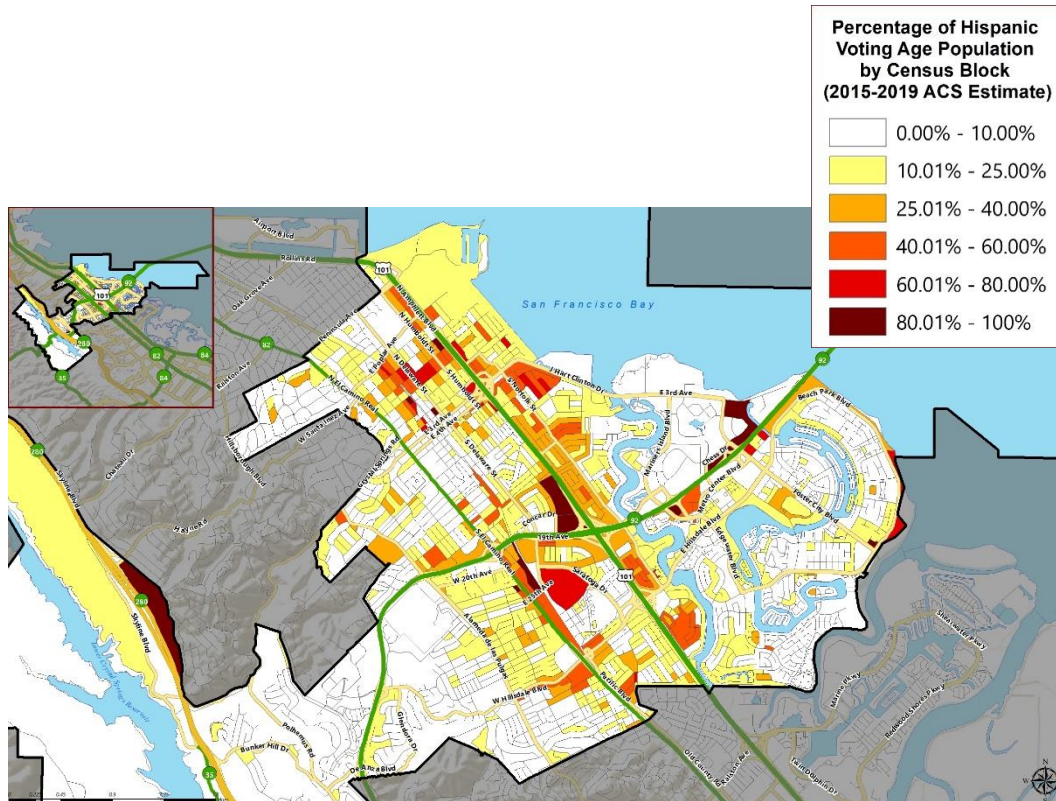
Trustee Area	2010 Census		2020 Census		Change	
	Total	Variance	Total	Variance	Population	Percent
Trustee Area 1	27,167	5.2%	28,503	1.3%	1,336	4.9%
Trustee Area 2	26,310	1.9%	29,030	3.2%	2,720	10.3%
Trustee Area 3	25,522	-1.2%	27,834	-1.1%	2,312	9.1%
Trustee Area 4	25,020	-3.1%	26,287	-6.6%	1,267	5.1%
Trustee Area 5	25,080	-2.9%	29,013	3.1%	3,933	15.7%
Total Population	129,099	8.3%	140,667	9.75%	11,568	9.0%

► DISTRICT DEMOGRAPHICS 2020 CENSUS DATA



Population	Total Population		Age 18 and over	
	Total	%	Total	%
Hispanic/Latino	29,427	20.9%	21,362	19.0%
White	52,229	37.1%	44,494	39.7%
Black / African American	2,194	1.6%	1,907	1.7%
American Indian /Alaska Native	205	0.1%	165	0.1%
Asian	46,035	32.7%	37,630	33.6%
Native Hawaiian/ Pacific Islander	1,831	1.3%	1,412	1.3%
Other	1,167	0.8%	821	0.7%
Two or More Races	7,579	5.4%	4,356	3.9%
Total	140,667	100%	112,147	100%

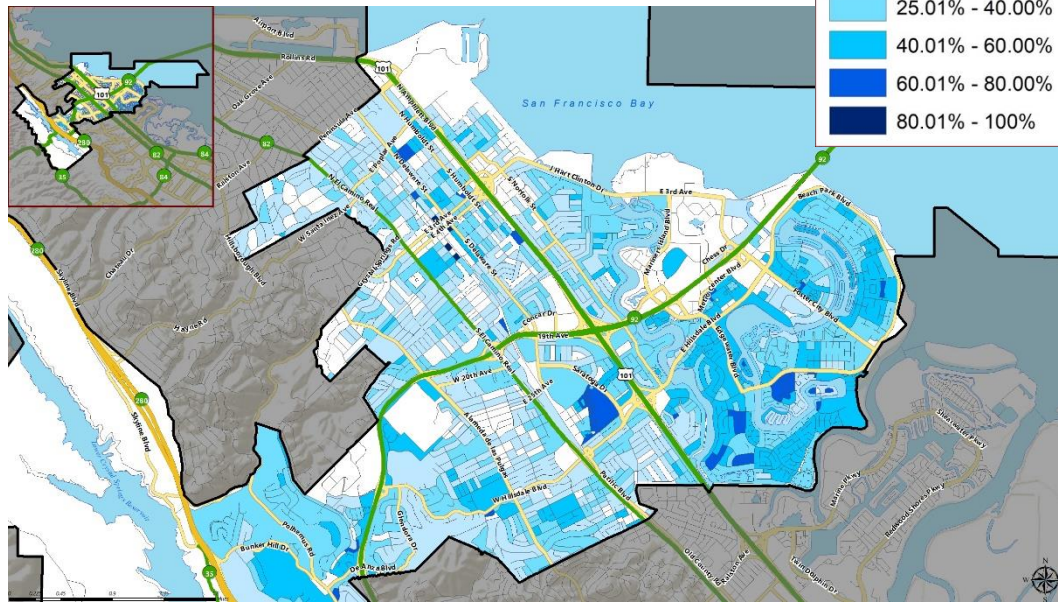
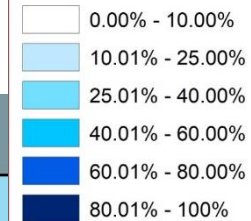
► DISTRICT DEMOGRAPHICS CITIZEN VOTING AGE POPULATION ESTIMATES



Population	2015-2019 CVAP	
	Total	%
Hispanic/Latino	12,579	14.6%
White	43,628	50.6%
Black / African American	2,111	2.4%
American Indian / Alaska Native	173	0.2%
Asian	23,435	27.2%
Native Hawaiian/ Pacific Islander	1,394	1.6%
Two or More Races	2,847	3.3%
Total	86,167	100%

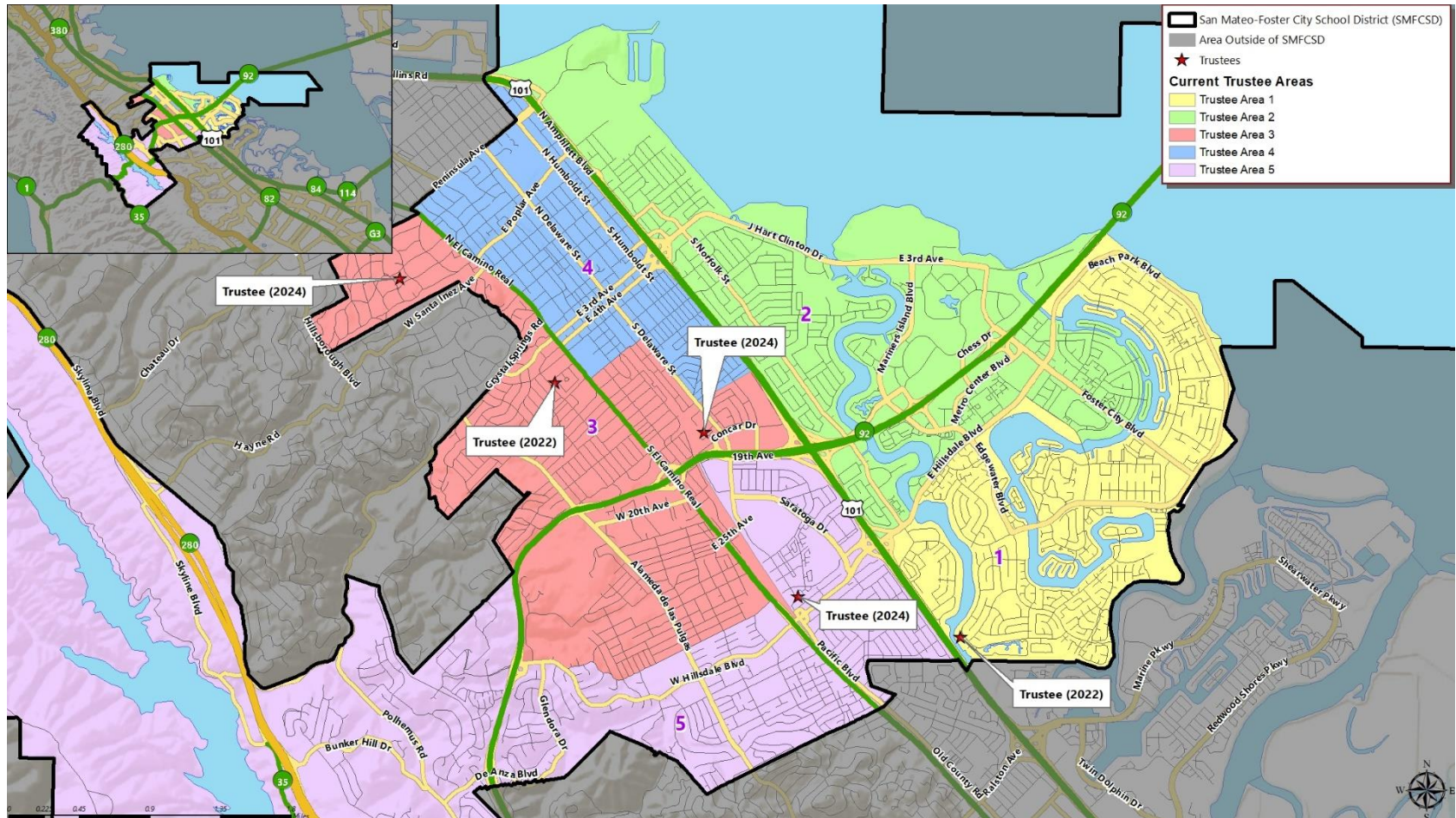
► DISTRICT DEMOGRAPHICS CITIZEN VOTING AGE POPULATION ESTIMATES

Percentage of Asian Voting Age Population by Census Block (2015-2019 ACS Estimate)



Population	2015-2019 CVAP	
	Total	%
Hispanic/Latino	12,579	14.6%
White	43,628	50.6%
Black / African American	2,111	2.4%
American Indian / Alaska Native	173	0.2%
Asian	23,435	27.2%
Native Hawaiian/ Pacific Islander	1,394	1.6%
Two or More Races	2,847	3.3%
Total	86,167	100%

► CURRENT TRUSTEE AREAS



► CURRENT TRUSTEE AREAS

	Census 2020 Total Population:		140,667		Ideal Trustee Area Size:		28,133		Total Variance:		9.75%	
TRUSTEE AREA	Trustee Area 1		Trustee Area 2		Trustee Area 3		Trustee Area 4		Trustee Area 5			
TP* vs. CVAP**	TP	CVAP	TP	CVAP	TP	CVAP	TP	CVAP	TP	CVAP		
Population	28,503	17,149	29,030	18,010	27,834	18,169	26,287	13,976	29,013	18,863		
Population Variance	1.3%	N/A	3.2%	N/A	-1.1%	N/A	-6.6%	N/A	3.1%	N/A		
Hispanic/Latino	10.9%	9.8%	21.7%	21.2%	15.8%	11.7%	38.8%	19.7%	18.7%	11.6%		
White	30.7%	44.8%	31.6%	42.2%	50.2%	63.3%	30.8%	47.6%	42.3%	54.0%		
Black/African American	1.3%	2.5%	1.7%	3.1%	1.1%	0.8%	2.5%	4.5%	1.3%	1.8%		
American Indian/Alaska Native	0.1%	0.0%	0.1%	0.0%	0.2%	0.0%	0.1%	0.2%	0.2%	0.7%		
Asian	50.5%	39.9%	35.8%	25.4%	25.1%	20.1%	21.3%	22.6%	29.9%	27.6%		
Native Hawaiian/Other Pacific Islander	0.6%	0.2%	3.2%	4.5%	0.7%	0.4%	1.3%	2.2%	0.7%	0.9%		
Other	0.9%	N/A	0.8%	N/A	0.6%	N/A	0.9%	N/A	0.9%	N/A		
Two or More Races	5.1%	2.7%	5.0%	3.7%	6.4%	3.6%	4.3%	3.1%	6.1%	3.4%		

*Total Population; Source: Redistricting Database for California, Published by Statewide Database on September 20, 2021

**Citizen Voting Age Population (CVAP); Source: American Community Survey, 2015-2019 Data

► CONSIDERATIONS IN VOTING AREAS



Each area shall contain nearly equal number of inhabitants



Follow man-made and natural geographic features, as much as possible



Drawn to comply with the Federal Voting Rights Act



Respect incumbency, if possible



Compact and contiguous, as much as possible



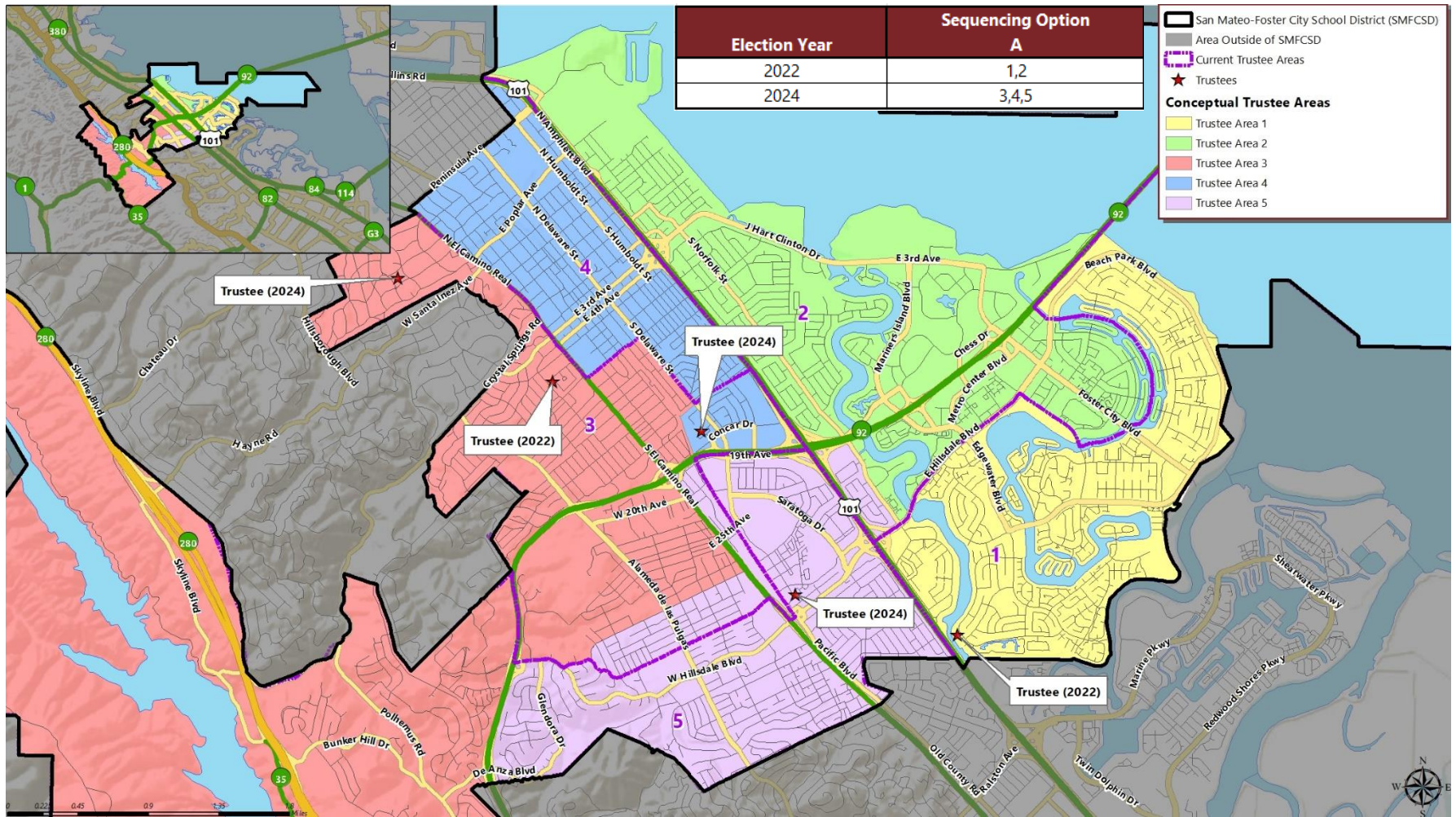
Other local considerations



Respect communities of interest, as much as possible

► CONCEPTUAL TRUSTEE AREAS

SCENARIO 1



► DEMOGRAPHICS

SCENARIO 1

Total Population:	140,667	Ideal Trustee Area Size:	28,133	Variance:	4.2%
-------------------	---------	--------------------------	--------	-----------	------

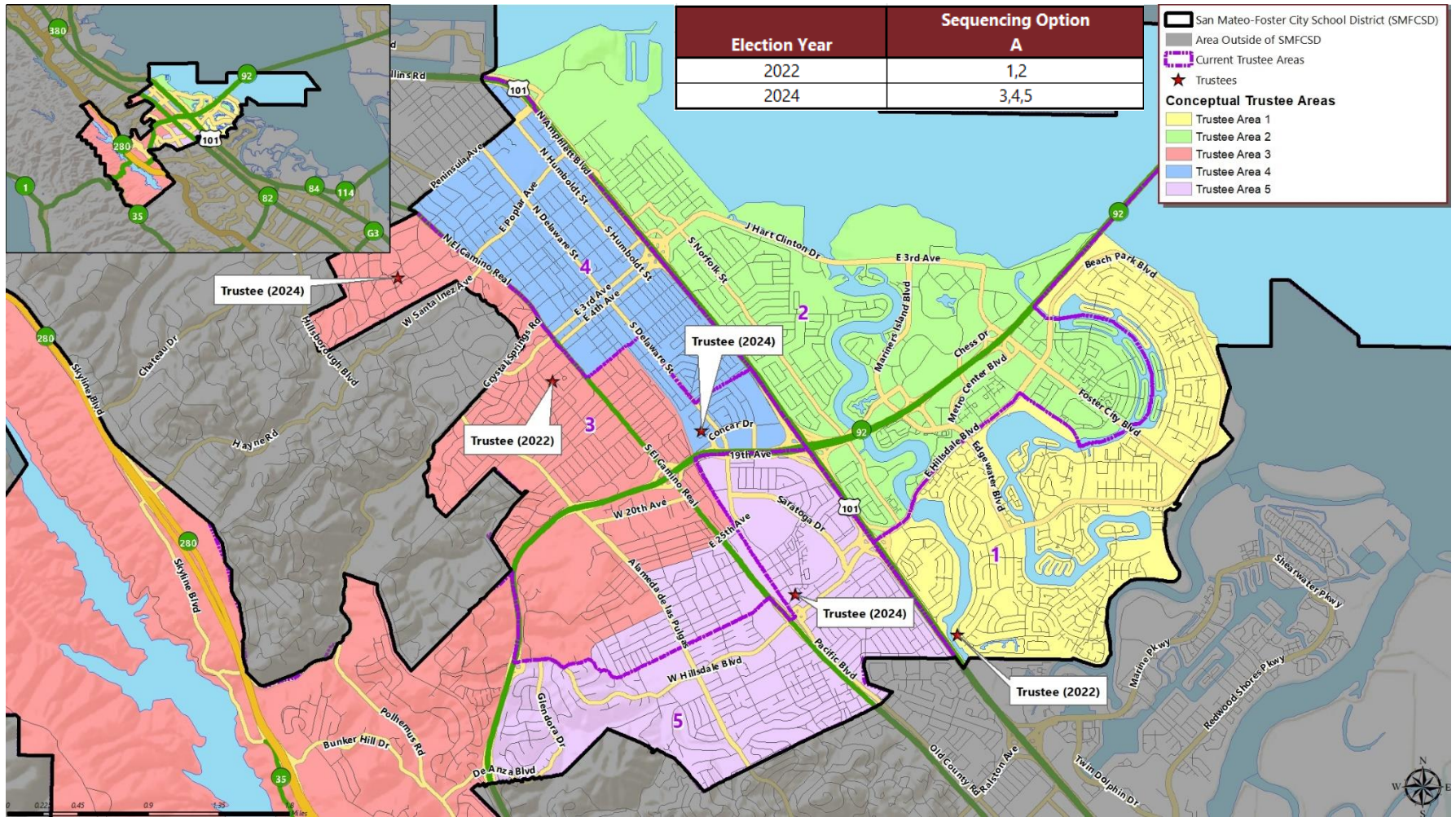
TRUSTEE AREA	Trustee Area 1		Trustee Area 2		Trustee Area 3		Trustee Area 4		Trustee Area 5	
TP* vs. CVAP**	TP	CVAP	TP	CVAP	TP	CVAP	TP	CVAP	TP	CVAP
Population	28,291	17,011	28,466	17,680	28,611	19,869	27,858	14,616	27,441	16,991
Population Variance	0.6%	N/A	1.2%	N/A	1.7%	N/A	-1.0%	N/A	-2.5%	N/A
Hispanic/Latino	10.9%	9.9%	21.3%	20.6%	13.1%	9.4%	38.0%	19.6%	21.7%	14.9%
White	30.7%	44.8%	31.8%	42.7%	51.8%	63.6%	30.6%	47.6%	40.7%	52.1%
Black/African American	1.3%	2.5%	1.7%	3.1%	0.9%	0.8%	2.4%	4.4%	1.4%	1.8%
American Indian/Alaska Native	0.1%	0.0%	0.1%	0.0%	0.1%	0.0%	0.1%	0.2%	0.2%	0.8%
Asian	50.5%	39.9%	36.0%	25.3%	26.4%	22.5%	22.2%	23.0%	28.2%	25.6%
Native Hawaiian/Other Pacific Islander	0.6%	0.2%	3.2%	4.6%	0.6%	0.4%	1.4%	2.1%	0.8%	1.0%
Other	0.9%	0.0%	0.8%	0.0%	0.6%	0.0%	0.9%	0.0%	1.0%	0.0%
Two or More Races	5.0%	2.7%	5.0%	3.7%	6.5%	3.3%	4.4%	3.2%	6.0%	3.6%

*Total Population; Source: Redistricting Database for California, Published by Statewide Database on September 20, 2021

**Citizen Voting Age Population (CVAP); Source: American Community Survey, 2015-2019 Data

► CONCEPTUAL TRUSTEE AREAS

SCENARIO 1A



► DEMOGRAPHICS

SCENARIO 1A

Total Population:	140,667	Ideal Trustee Area Size:	28,133	Variance:	9.5%
-------------------	---------	--------------------------	--------	-----------	------

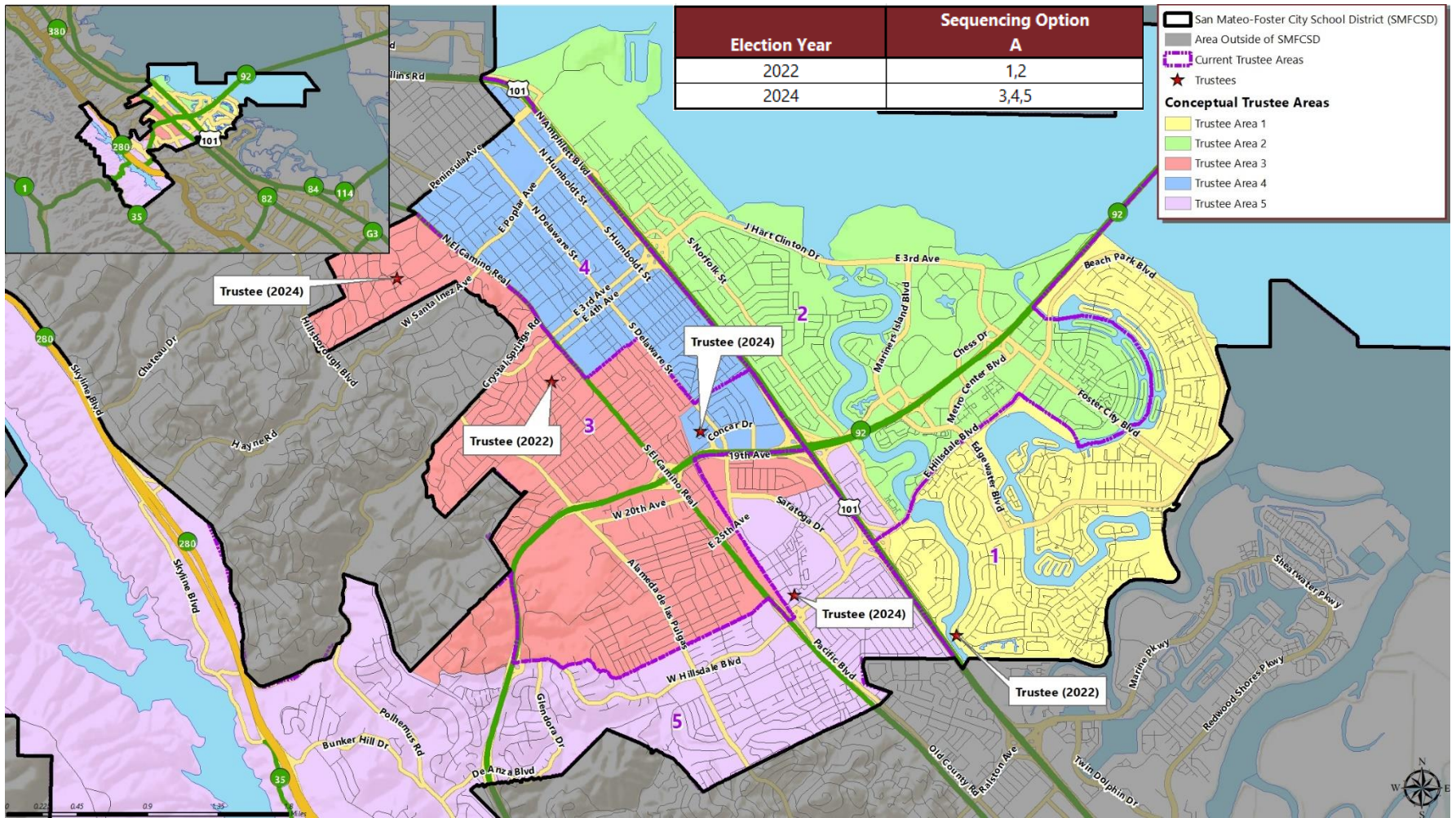
TRUSTEE AREA	Trustee Area 1		Trustee Area 2		Trustee Area 3		Trustee Area 4		Trustee Area 5	
TP* vs. CVAP**	TP	CVAP	TP	CVAP	TP	CVAP	TP	CVAP	TP	CVAP
Population	28,291	17,011	29,242	18,148	26,562	18,527	28,482	14,931	28,090	17,550
Population Variance	0.6%	N/A	3.9%	N/A	-5.6%	N/A	1.2%	N/A	-0.2%	N/A
Hispanic/Latino	10.9%	9.9%	21.6%	21.1%	12.4%	8.9%	38.1%	19.4%	20.9%	14.4%
White	30.7%	44.8%	31.6%	42.2%	52.6%	64.0%	30.5%	47.6%	41.5%	53.4%
Black/African American	1.3%	2.5%	1.7%	3.1%	0.9%	0.7%	2.4%	4.5%	1.4%	1.8%
American Indian/Alaska Native	0.1%	0.0%	0.1%	0.0%	0.1%	0.0%	0.1%	0.2%	0.2%	0.8%
Asian	50.5%	39.9%	35.9%	25.5%	26.3%	22.5%	22.2%	23.0%	28.3%	25.1%
Native Hawaiian/Other Pacific Islander	0.6%	0.2%	3.2%	4.4%	0.6%	0.4%	1.4%	2.0%	0.7%	0.9%
Other	0.9%	0.0%	0.8%	0.0%	0.6%	0.0%	0.8%	0.0%	1.0%	0.0%
Two or More Races	5.0%	2.7%	5.0%	3.7%	6.5%	3.4%	4.4%	3.2%	6.1%	3.6%

*Total Population; Source: Redistricting Database for California, Published by Statewide Database on September 20, 2021

**Citizen Voting Age Population (CVAP); Source: American Community Survey, 2015-2019 Data

► CONCEPTUAL TRUSTEE AREAS

SCENARIO 2



► DEMOGRAPHICS

SCENARIO 2

Total Population:	140,667	Ideal Trustee Area Size:	28,133	Variance:	2.7%
-------------------	---------	--------------------------	--------	-----------	------

TRUSTEE AREA	Trustee Area 1		Trustee Area 2		Trustee Area 3		Trustee Area 4		Trustee Area 5	
TP* vs. CVAP**	TP	CVAP	TP	CVAP	TP	CVAP	TP	CVAP	TP	CVAP
Population	28,291	17,011	28,466	17,680	28,347	18,624	27,858	14,616	27,705	18,236
Population Variance	0.6%	N/A	1.2%	N/A	0.8%	N/A	-1.0%	N/A	-1.5%	N/A
Hispanic/Latino	10.9%	9.9%	21.3%	20.6%	16.6%	12.4%	38.0%	19.6%	18.1%	11.5%
White	30.7%	44.8%	31.8%	42.7%	50.0%	62.5%	30.6%	47.6%	42.6%	54.1%
Black/African American	1.3%	2.5%	1.7%	3.1%	1.1%	1.0%	2.4%	4.4%	1.2%	1.6%
American Indian/Alaska Native	0.1%	0.0%	0.1%	0.0%	0.2%	0.0%	0.1%	0.2%	0.1%	0.8%
Asian	50.5%	39.9%	36.0%	25.3%	24.3%	19.9%	22.2%	23.0%	30.3%	28.0%
Native Hawaiian/Other Pacific Islander	0.6%	0.2%	3.2%	4.6%	0.6%	0.7%	1.4%	2.1%	0.7%	0.7%
Other	0.9%	0.0%	0.8%	0.0%	0.7%	0.0%	0.9%	0.0%	0.9%	0.0%
Two or More Races	5.0%	2.7%	5.0%	3.7%	6.4%	3.6%	4.4%	3.2%	6.1%	3.4%

*Total Population; Source: Redistricting Database for California, Published by Statewide Database on September 20, 2021

**Citizen Voting Age Population (CVAP); Source: American Community Survey, 2015-2019 Data

San Mateo-Foster City School District (SMFCSD)

Election Year

Election Year	Sequencing Option A
2022	1,2
2024	3,4,5

Legend:

- San Mateo-Foster City School District (SMFCSD)
- Area Outside of SMFCSD
- Current Trustee Areas
- Trustees
- Conceptual Trustee Areas**
 - Trustee Area 1
 - Trustee Area 2
 - Trustee Area 3
 - Trustee Area 4
 - Trustee Area 5

Map Labels:

- Trustee (2024)
- Trustee (2022)
- Trustee (2024)
- Trustee (2024)
- Trustee (2022)

Map Features:

- Major Roads: Skyline Blvd, Peninsula Ave, Highway 101, Highway 92, Highway 35, Highway 82, Highway 114, Highway 63, Highway 280, Highway 380, Highway 1.
- Local Roads: Chateau Dr, Hayne Rd, Hillborough Blvd, W Santa Inez Ave, Cortez Canyon Rd, E 3rd Ave, E 4th Ave, E 5th Ave, E 6th Ave, E 7th Ave, E 8th Ave, E 9th Ave, E 10th Ave, E 11th Ave, E 12th Ave, E 13th Ave, E 14th Ave, E 15th Ave, E 16th Ave, E 17th Ave, E 18th Ave, E 19th Ave, E 20th Ave, E 21st Ave, E 22nd Ave, E 23rd Ave, E 24th Ave, E 25th Ave, E 26th Ave, E 27th Ave, E 28th Ave, E 29th Ave, E 30th Ave, E 31st Ave, E 32nd Ave, E 33rd Ave, E 34th Ave, E 35th Ave, E 36th Ave, E 37th Ave, E 38th Ave, E 39th Ave, E 40th Ave, E 41st Ave, E 42nd Ave, E 43rd Ave, E 44th Ave, E 45th Ave, E 46th Ave, E 47th Ave, E 48th Ave, E 49th Ave, E 50th Ave, E 51st Ave, E 52nd Ave, E 53rd Ave, E 54th Ave, E 55th Ave, E 56th Ave, E 57th Ave, E 58th Ave, E 59th Ave, E 60th Ave, E 61st Ave, E 62nd Ave, E 63rd Ave, E 64th Ave, E 65th Ave, E 66th Ave, E 67th Ave, E 68th Ave, E 69th Ave, E 70th Ave, E 71st Ave, E 72nd Ave, E 73rd Ave, E 74th Ave, E 75th Ave, E 76th Ave, E 77th Ave, E 78th Ave, E 79th Ave, E 80th Ave, E 81st Ave, E 82nd Ave, E 83rd Ave, E 84th Ave, E 85th Ave, E 86th Ave, E 87th Ave, E 88th Ave, E 89th Ave, E 90th Ave, E 91st Ave, E 92nd Ave, E 93rd Ave, E 94th Ave, E 95th Ave, E 96th Ave, E 97th Ave, E 98th Ave, E 99th Ave, E 100th Ave, E 101st Ave, E 102nd Ave, E 103rd Ave, E 104th Ave, E 105th Ave, E 106th Ave, E 107th Ave, E 108th Ave, E 109th Ave, E 110th Ave, E 111th Ave, E 112nd Ave, E 113rd Ave, E 114th Ave, E 115th Ave, E 116th Ave, E 117th Ave, E 118th Ave, E 119th Ave, E 120th Ave, E 121st Ave, E 122nd Ave, E 123rd Ave, E 124th Ave, E 125th Ave, E 126th Ave, E 127th Ave, E 128th Ave, E 129th Ave, E 130th Ave, E 131st Ave, E 132nd Ave, E 133rd Ave, E 134th Ave, E 135th Ave, E 136th Ave, E 137th Ave, E 138th Ave, E 139th Ave, E 140th Ave, E 141st Ave, E 142nd Ave, E 143rd Ave, E 144th Ave, E 145th Ave, E 146th Ave, E 147th Ave, E 148th Ave, E 149th Ave, E 150th Ave, E 151st Ave, E 152nd Ave, E 153rd Ave, E 154th Ave, E 155th Ave, E 156th Ave, E 157th Ave, E 158th Ave, E 159th Ave, E 160th Ave, E 161st Ave, E 162nd Ave, E 163rd Ave, E 164th Ave, E 165th Ave, E 166th Ave, E 167th Ave, E 168th Ave, E 169th Ave, E 170th Ave, E 171st Ave, E 172nd Ave, E 173rd Ave, E 174th Ave, E 175th Ave, E 176th Ave, E 177th Ave, E 178th Ave, E 179th Ave, E 180th Ave, E 181st Ave, E 182nd Ave, E 183rd Ave, E 184th Ave, E 185th Ave, E 186th Ave, E 187th Ave, E 188th Ave, E 189th Ave, E 190th Ave, E 191st Ave, E 192nd Ave, E 193rd Ave, E 194th Ave, E 195th Ave, E 196th Ave, E 197th Ave, E 198th Ave, E 199th Ave, E 200th Ave, E 201st Ave, E 202nd Ave, E 203rd Ave, E 204th Ave, E 205th Ave, E 206th Ave, E 207th Ave, E 208th Ave, E 209th Ave, E 210th Ave, E 211th Ave, E 212nd Ave, E 213rd Ave, E 214th Ave, E 215th Ave, E 216th Ave, E 217th Ave, E 218th Ave, E 219th Ave, E 220th Ave, E 221st Ave, E 222nd Ave, E 223rd Ave, E 224th Ave, E 225th Ave, E 226th Ave, E 227th Ave, E 228th Ave, E 229th Ave, E 230th Ave, E 231st Ave, E 232nd Ave, E 233rd Ave, E 234th Ave, E 235th Ave, E 236th Ave, E 237th Ave, E 238th Ave, E 239th Ave, E 240th Ave, E 241st Ave, E 242nd Ave, E 243rd Ave, E 244th Ave, E 245th Ave, E 246th Ave, E 247th Ave, E 248th Ave, E 249th Ave, E 250th Ave, E 251st Ave, E 252nd Ave, E 253rd Ave, E 254th Ave, E 255th Ave, E 256th Ave, E 257th Ave, E 258th Ave, E 259th Ave, E 260th Ave, E 261st Ave, E 262nd Ave, E 263rd Ave, E 264th Ave, E 265th Ave, E 266th Ave, E 267th Ave, E 268th Ave, E 269th Ave, E 270th Ave, E 271st Ave, E 272nd Ave, E 273rd Ave, E 274th Ave, E 275th Ave, E 276th Ave, E 277th Ave, E 278th Ave, E 279th Ave, E 280th Ave, E 281st Ave, E 282nd Ave, E 283rd Ave, E 284th Ave, E 285th Ave, E 286th Ave, E 287th Ave, E 288th Ave, E 289th Ave, E 290th Ave, E 291st Ave, E 292nd Ave, E 293rd Ave, E 294th Ave, E 295th Ave, E 296th Ave, E 297th Ave, E 298th Ave, E 299th Ave, E 300th Ave, E 301st Ave, E 302nd Ave, E 303rd Ave, E 304th Ave, E 305th Ave, E 306th Ave, E 307th Ave, E 308th Ave, E 309th Ave, E 310th Ave, E 311th Ave, E 312nd Ave, E 313rd Ave, E 314th Ave, E 315th Ave, E 316th Ave, E 317th Ave, E 318th Ave, E 319th Ave, E 320th Ave, E 321st Ave, E 322nd Ave, E 323rd Ave, E 324th Ave, E 325th Ave, E 326th Ave, E 327th Ave, E 328th Ave, E 329th Ave, E 330th Ave, E 331st Ave, E 332nd Ave, E 333rd Ave, E 334th Ave, E 335th Ave, E 336th Ave, E 337th Ave, E 338th Ave, E 339th Ave, E 340th Ave, E 341st Ave, E 342nd Ave, E 343rd Ave, E 344th Ave, E 345th Ave, E 346th Ave, E 347th Ave, E 348th Ave, E 349th Ave, E 350th Ave, E 351st Ave, E 352nd Ave, E 353rd Ave, E 354th Ave, E 355th Ave, E 356th Ave, E 357th Ave, E 358th Ave, E 359th Ave, E 360th Ave, E 361st Ave, E 362nd Ave, E 363rd Ave, E 364th Ave, E 365th Ave, E 366th Ave, E 367th Ave, E 368th Ave, E 369th Ave, E 370th Ave, E 371st Ave, E 372nd Ave, E 373rd Ave, E 374th Ave, E 375th Ave, E 376th Ave, E 377th Ave, E 378th Ave, E 379th Ave, E 380th Ave, E 381st Ave, E 382nd Ave, E 383rd Ave, E 384th Ave, E 385th Ave, E 386th Ave, E 387th Ave, E 388th Ave, E 389th Ave, E 390th Ave, E 391st Ave, E 392nd Ave, E 393rd Ave, E 394th Ave, E 395th Ave, E 396th Ave, E 397th Ave, E 398th Ave, E 399th Ave, E 400th Ave, E 401st Ave, E 402nd Ave, E 403rd Ave, E 404th Ave, E 405th Ave, E 406th Ave, E 407th Ave, E 408th Ave, E 409th Ave, E 410th Ave, E 411th Ave, E 412nd Ave, E 413rd Ave, E 414th Ave, E 415th Ave, E 416th Ave, E 417th Ave, E 418th Ave, E 419th Ave, E 420th Ave, E 421st Ave, E 422nd Ave, E 423rd Ave, E 424th Ave, E 425th Ave, E 426th Ave, E 427th Ave, E 428th Ave, E 429th Ave, E 430th Ave, E 431st Ave, E 432nd Ave, E 433rd Ave, E 434th Ave, E 435th Ave, E 436th Ave, E 437th Ave, E 438th Ave, E 439th Ave, E 440th Ave, E 441st Ave, E 442nd Ave, E 443rd Ave, E 444th Ave, E 445th Ave, E 446th Ave, E

► DEMOGRAPHICS

SCENARIO 2A

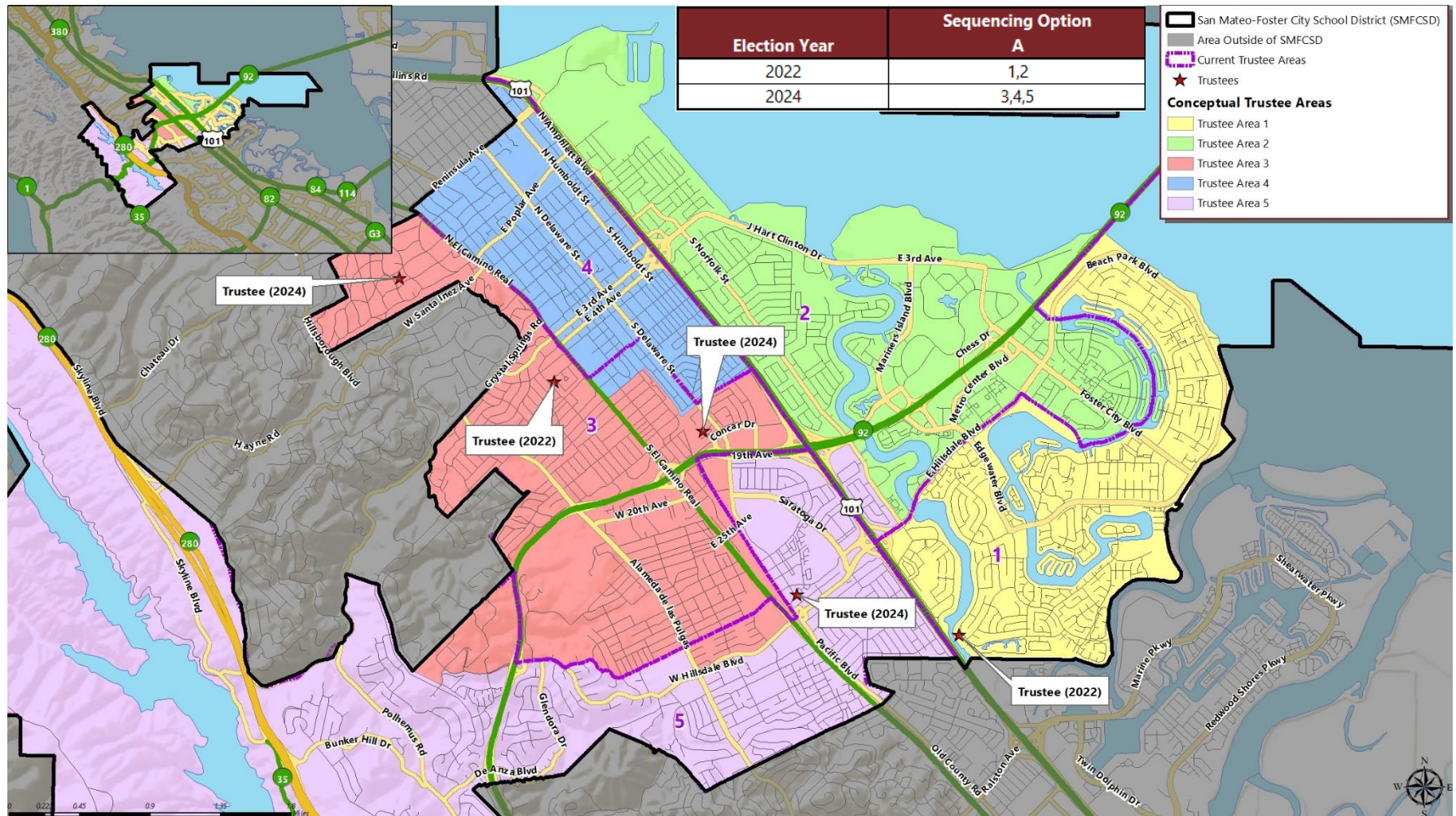
Total Population:	140,667	Ideal Trustee Area Size:	28,133	Variance:	9.5%
-------------------	---------	--------------------------	--------	-----------	------

TRUSTEE AREA	Trustee Area 1		Trustee Area 2		Trustee Area 3		Trustee Area 4		Trustee Area 5	
TP* vs. CVAP**	TP	CVAP	TP	CVAP	TP	CVAP	TP	CVAP	TP	CVAP
Population	28,291	17,011	29,242	18,148	26,567	17,745	28,482	14,931	28,085	18,332
Population Variance	0.6%	N/A	3.9%	N/A	-5.6%	N/A	1.2%	N/A	-0.2%	N/A
Hispanic/Latino	10.9%	9.9%	21.6%	21.1%	15.0%	11.8%	38.1%	19.4%	18.4%	11.3%
White	30.7%	44.8%	31.6%	42.2%	51.5%	63.7%	30.5%	47.6%	42.6%	54.2%
Black/African American	1.3%	2.5%	1.7%	3.1%	1.1%	0.8%	2.4%	4.5%	1.2%	1.7%
American Indian/Alaska Native	0.1%	0.0%	0.1%	0.0%	0.2%	0.0%	0.1%	0.2%	0.1%	0.8%
Asian	50.5%	39.9%	35.9%	25.5%	24.5%	19.7%	22.2%	23.0%	30.0%	27.7%
Native Hawaiian/Other Pacific Islander	0.6%	0.2%	3.2%	4.4%	0.6%	0.4%	1.4%	2.0%	0.7%	0.9%
Other	0.9%	0.0%	0.8%	0.0%	0.7%	0.0%	0.8%	0.0%	0.9%	0.0%
Two or More Races	5.0%	2.7%	5.0%	3.7%	6.5%	3.6%	4.4%	3.2%	6.1%	3.4%

*Total Population; Source: Redistricting Database for California, Published by Statewide Database on September 20, 2021

**Citizen Voting Age Population (CVAP); Source: American Community Survey, 2015-2019 Data

► CONCEPTUAL TRUSTEE AREAS SCENARIO 3



► DEMOGRAPHICS

SCENARIO 3

Total Population:	140,667	Ideal Trustee Area Size:	28,133	Variance:	3.0%
-------------------	---------	--------------------------	--------	-----------	------

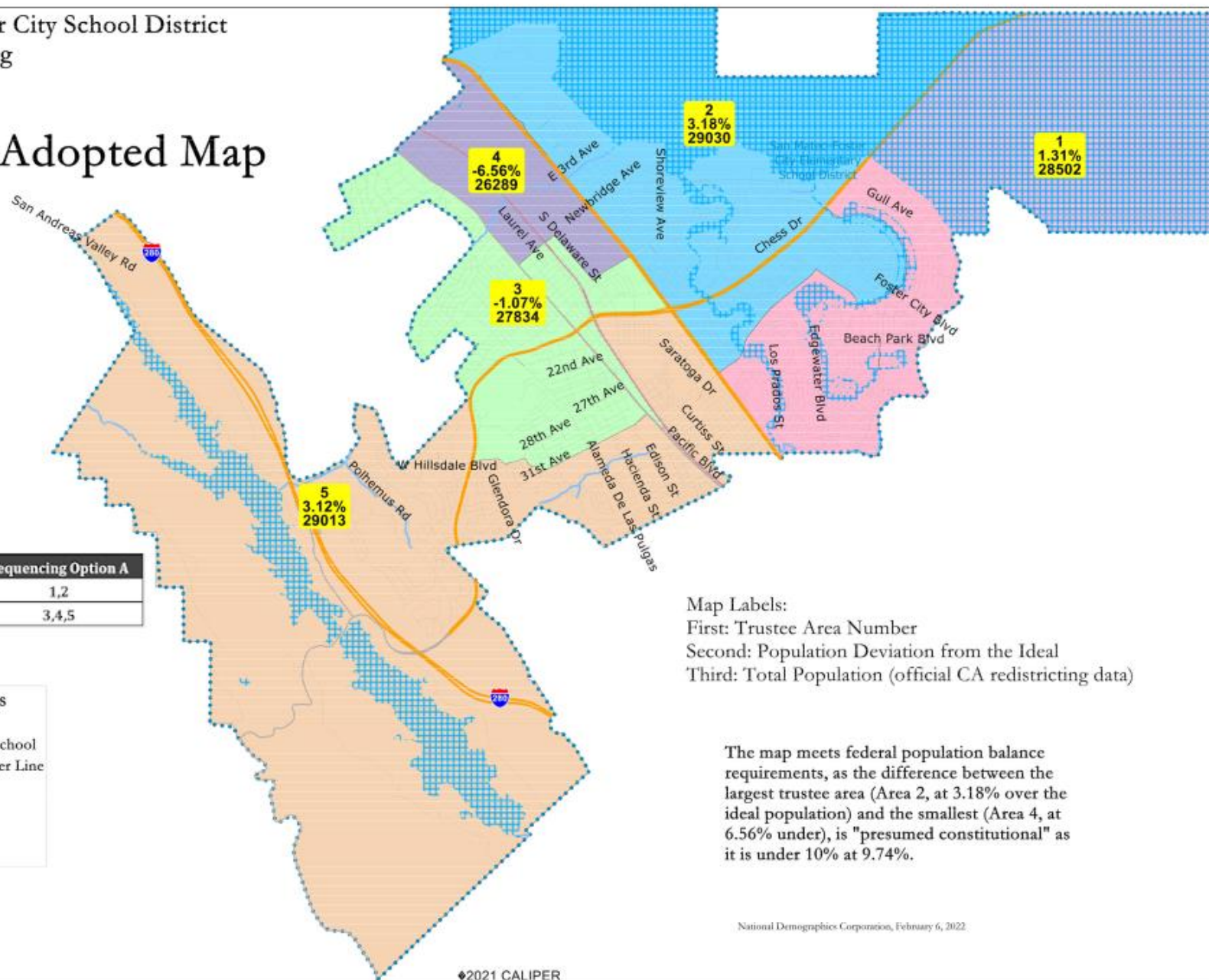
TRUSTEE AREA	Trustee Area 1		Trustee Area 2		Trustee Area 3		Trustee Area 4		Trustee Area 5	
TP* vs. CVAP**	TP	CVAP	TP	CVAP	TP	CVAP	TP	CVAP	TP	CVAP
Population	28,291	17,011	28,466	17,680	28,144	18,444	27,633	14,663	28,133	18,369
Population Variance	0.6%	N/A	1.2%	N/A	0.0%	N/A	-1.8%	N/A	0.0%	N/A
Hispanic/Latino	10.9%	9.9%	21.3%	20.6%	15.8%	12.4%	38.4%	19.1%	18.6%	11.9%
White	30.7%	44.8%	31.8%	42.7%	50.0%	63.1%	31.1%	48.2%	42.1%	53.1%
Black/African American	1.3%	2.5%	1.7%	3.1%	1.1%	0.8%	2.4%	4.6%	1.2%	1.7%
American Indian/Alaska Native	0.1%	0.0%	0.1%	0.0%	0.2%	0.0%	0.1%	0.2%	0.1%	0.8%
Asian	50.5%	39.9%	36.0%	25.3%	25.2%	19.7%	21.3%	22.8%	30.3%	28.3%
Native Hawaiian/Other Pacific Islander	0.6%	0.2%	3.2%	4.6%	0.6%	0.4%	1.3%	2.1%	0.8%	0.9%
Other	0.9%	0.0%	0.8%	0.0%	0.7%	0.0%	0.9%	0.0%	0.9%	0.0%
Two or More Races	5.0%	2.7%	5.0%	3.7%	6.3%	3.6%	4.5%	3.0%	6.0%	3.4%

*Total Population; Source: Redistricting Database for California, Published by Statewide Database on September 20, 2021

**Citizen Voting Age Population (CVAP); Source: American Community Survey, 2015-2019 Data

San Mateo Foster City School District
2022 Redistricting

2021 Adopted Map



Election Year	Sequencing Option A
2022	1,2
2024	3,4,5

Map layers	
	Adopted
	Elementary School
	Pipeline Power Line
	Railroad
	River
	Streets
	Water Area

Map Labels:
First: Trustee Area Number
Second: Population Deviation from the Ideal
Third: Total Population (official CA redistricting data)

The map meets federal population balance requirements, as the difference between the largest trustee area (Area 2, at 3.18% over the ideal population) and the smallest (Area 4, at 6.56% under), is "presumed constitutional" as it is under 10% at 9.74%.

► TRUSTEE AREA PROCESS

DATE	ACTIVITY
January – February 2022	Cooperative Strategies Prepares Initial Evaluation of Existing Trustee Areas and if necessary, Creates Initial Map Scenarios of Adjusted Voting Areas
February 10, 2022	Board Meeting: Presentation on Evaluation of Existing Voting Areas Review Initial Map Scenarios Receive Input on Potential Adjustments
February 11-17, 2022	Cooperative Strategies revises scenarios based on Board and Public Input
February 24, 2022	Board Meeting: Review Revised and/or Additional Scenarios Adopt Final Trustee Areas
February 28, 2022	<i>Deadline for adopting final trustee area map (Education Code Section 5019.5)</i>
March 2022	Cooperative Strategies sends Final Trustee Areas Map to the County Registrars of Voters.



QUESTIONS

A row of yellow school buses is parked in a grassy field. The buses are yellow with black stripes and have "SCHOOL BUS" written on the front. The background is a sky with white clouds. The entire image has a dark, semi-transparent overlay with a large, stylized letter 'S' in the center.