



LGUSD

Curriculum & Instruction Spotlight

March 10, 2022



Presentation Overview

- Literably Window 2 preliminary data
- Transitional Kindergarten update



Literably Window 2 - January 24 to February 18

- An assessment window allows us to collect data for all TK-5 students in a specific time period
 - This assessment is still optional for TK/K students during this window
- Literably is a universal screening tool. Teachers are encouraged to use the data to determine the specific instructional needs.
- Literably reports the confirmed instructional level as well as the estimated instructional level for each student.
 - The confirmed instructional level is the actual data collected from the student's assessment.
 - There may be times when Literably will recommend that a student be re-assessed.
 - Until the student is re-assessed, Literably will provide an estimated instructional level based on their expectations of where a student is likely to end up after completing the re-assessment.
- Literably grade-level expectations are based on 4 windows while we have 3 windows. We are working to determine how to correlate the scores to our DRA expectations.

Literably Data - Window 2 (based on national norms)



Literably K-5 Reading Assessment

Current Grade

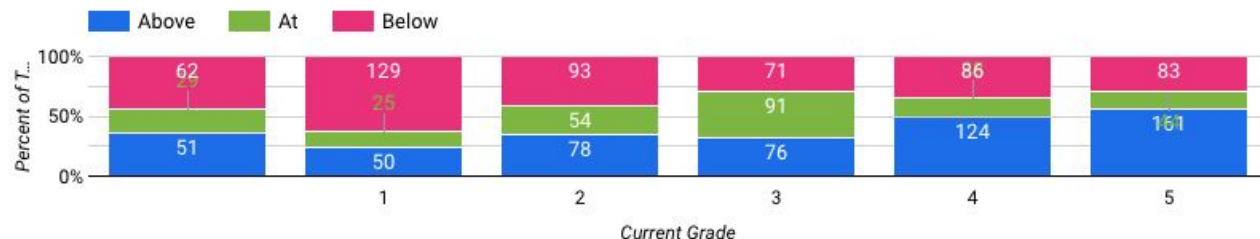
School

Fiction?

Teacher

Winter Window (1/01/22 - 2/18/22)

Confirmed Instructional Level



Levels

Grade K: A - B - D
Grade 1: E - G - J
Grade 2: K - L - M
Grade 3: N - O - P
Grade 4: Q - R - S
Grade 5: T - U - V
Grade 6: W - Y
Grade 7: Z

[Literably correlation chart](#)

Estimated Instructional Level - This is where Literably thinks the student is at but is not confirmed (did not re-assess)



Literably Data - Window 2 - (LGUSD norms)



Literably K-5 Reading Assessment

Current Grade

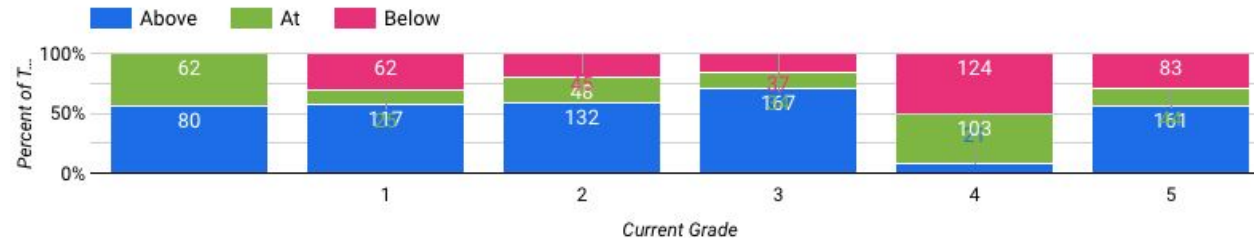
School

Fiction?

Teacher

Winter Window (1/01/22 - 2/18/22)

Confirmed Instructional Level

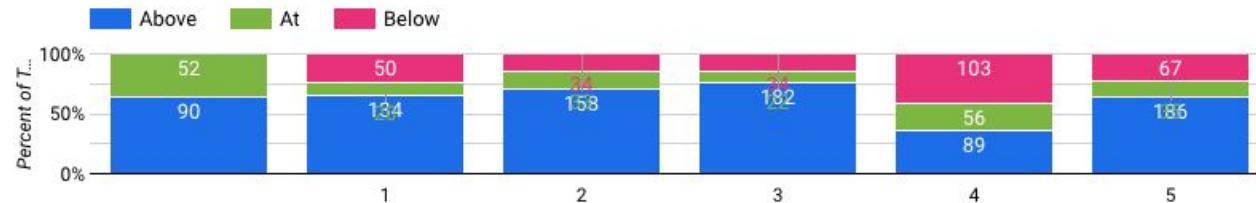


Levels

Grade K: A - D
Grade 1: E - J
Grade 2: K - M
Grade 3: N - P
Grade 4: Q - S
Grade 5: T - V
Grade 6: W - Y
Grade 7: Z

[Literably correlation chart](#)

Estimated Instructional Level - This is where Literably thinks the student is at but is not confirmed (did not re-assess)



National norms vs LGUSD norms



National norms

Estimated Instructional Level - This is where Literably thinks the student is at but is not confirmed (did not re-assess)



LGUSD norms

Estimated Instructional Level - This is where Literably thinks the student is at but is not confirmed (did not re-assess)





Diving Deeper in Grade 1

- 27 more grade 1 students were assessed in window 2 than in window 1.
- 65% of all grade 1 students assessed grew at least 1 or more reading level

| +1 level | +2 levels | +3 levels | +4 levels | +5 levels |
|----------|-----------|-----------|-----------|-----------|
| 37 | 44 | 21 | 27 | 3 |

- Depending on student progress, we will offer two grade 1 classes for summer school support
- Literacy specialists will be asked to target support for 2nd grade in the 2022-23 school year
- Professional development on the foundational reading skills will be offered to teachers in grades K-3

Transitional Kindergarten Update



Background

- AB130 is aimed at providing universal access to all four-year olds in the state
- The changes will be phased in over four years
- There are specific requirements regarding enrollment age, staffing ratios, and facilities

| 2021-22 | 2022-23 | 2023-24 | 2024-25 | 2025-26 |
|---|--|---|--|---|
| Students whose 5th birthday occurs between September 2 and December 2 2021 | Students whose 5th birthday occurs between September 2, 2022 and February 2, 2023 | Students whose 5th birthday occurs between September 2, 2023 and April 2, 2024 | Students whose 5th birthday occurs between September 2, 2024 and June 2, 2025 | Students whose 4th birthday occurs by September 1, 2025 |
| | New staffing ratio 1:12 | Proposed staffing ratio: 1:10 | | |



Transitional Kindergarten updates

- Currently LGUSD offers a combined TK/K program
- We are working with the TK/K team to design a separate TK program, thus creating a distinct two-year program (year 1 TK and year 2 kindergarten)
- Our goal is to offer an International Baccalaureate (IB) TK program that is housed at Lexington Elementary school.
- Families will have the option to return to their home school for Kindergarten.
- As a basic aid district, LGUSD does not receive any state funding for TK

Questions?