

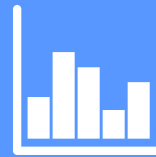
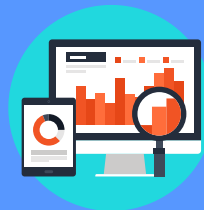


SAN MATEO-  
FOSTER CITY  
SCHOOL DISTRICT



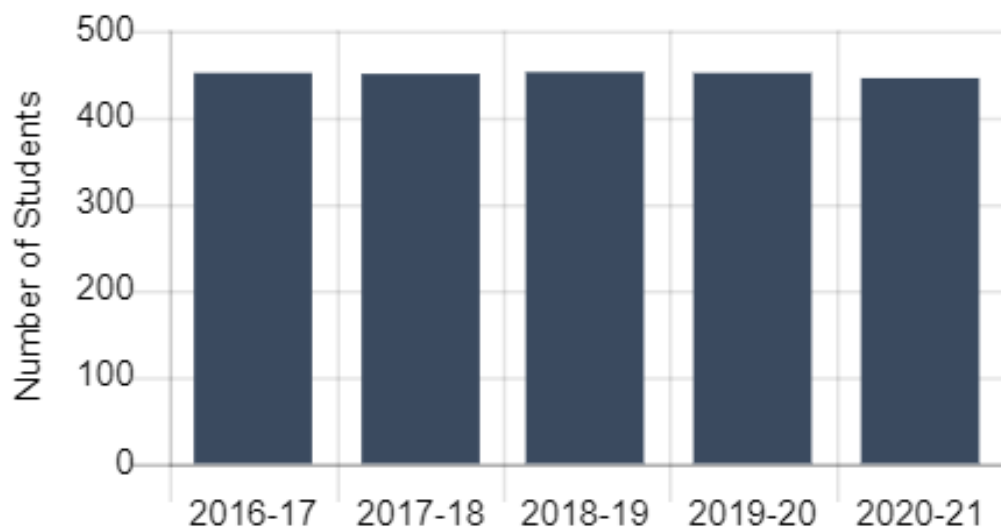
# NCSM SCHOOL DESIGN:

## IMPLICATIONS FOR COLLEGE PARK & FIESTA GARDENS



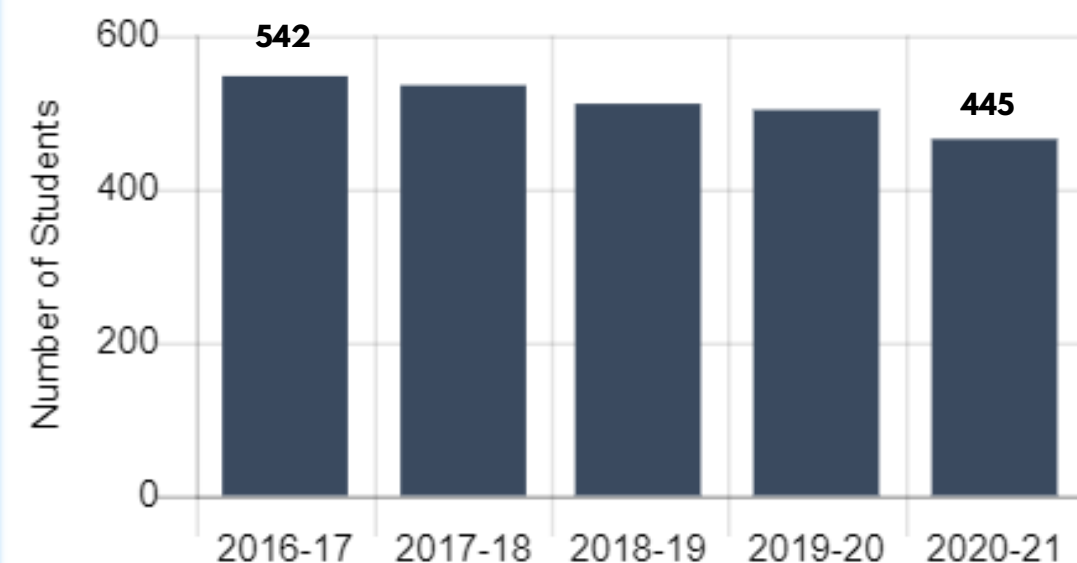
# WHAT DOES OUR DATA AND ENROLLMENT TELL US?

College Park Elementary



434

Fiesta Gardens International Elementary

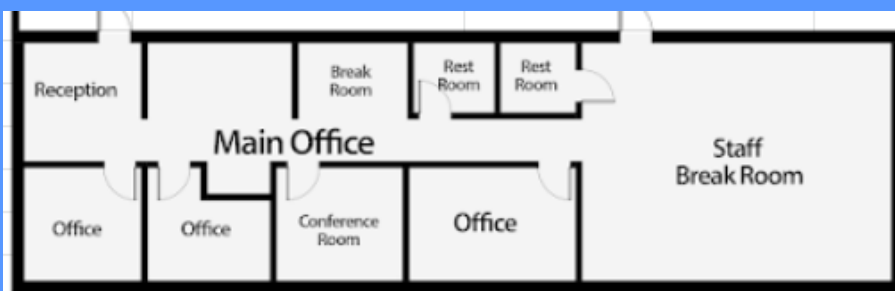


426

# ARE SCHOOL FACILITIES ABLE TO MAINTAIN CURRENT ENROLLMENT?



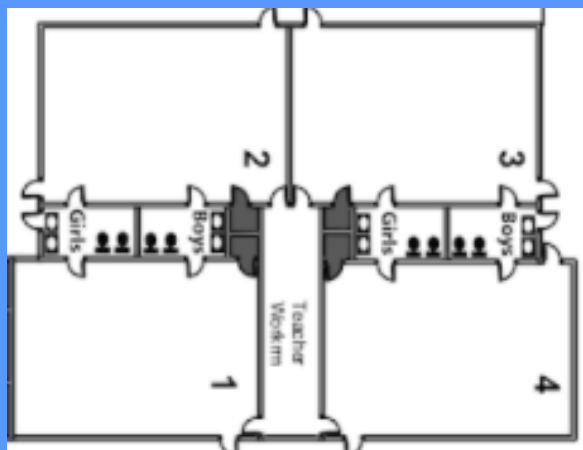
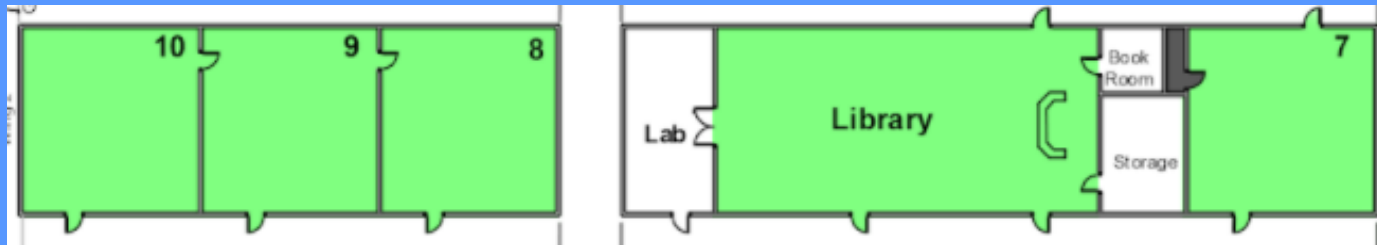
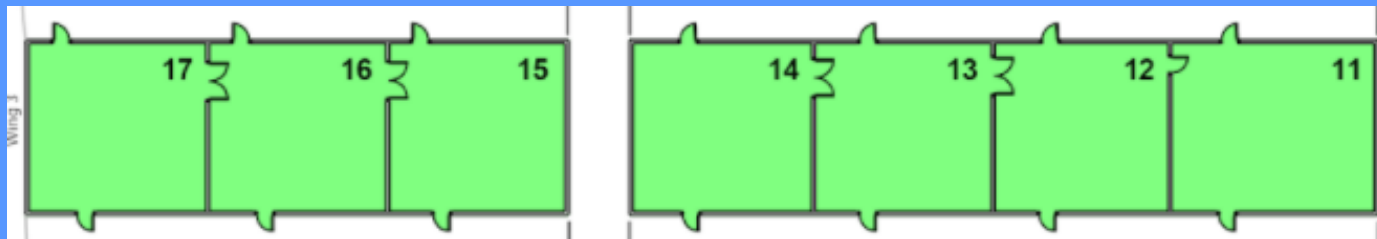
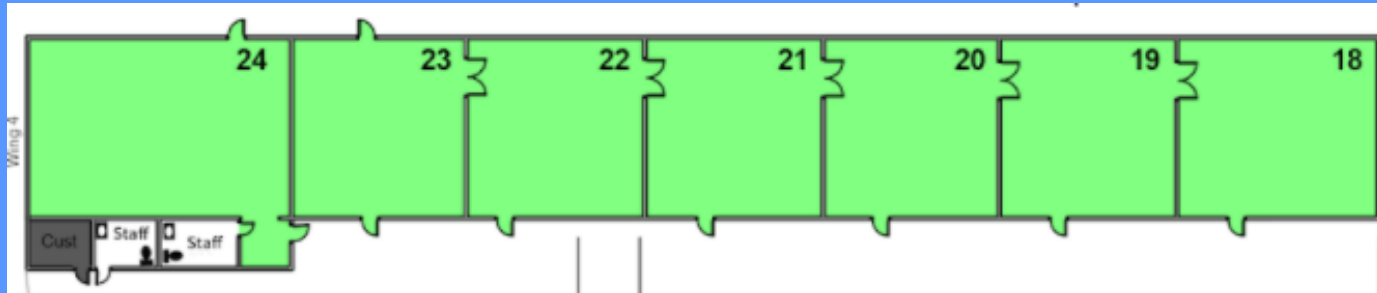
## TURNBULL

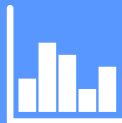


# ARE SCHOOL FACILITIES ABLE TO MAINTAIN CURRENT ENROLLMENT?



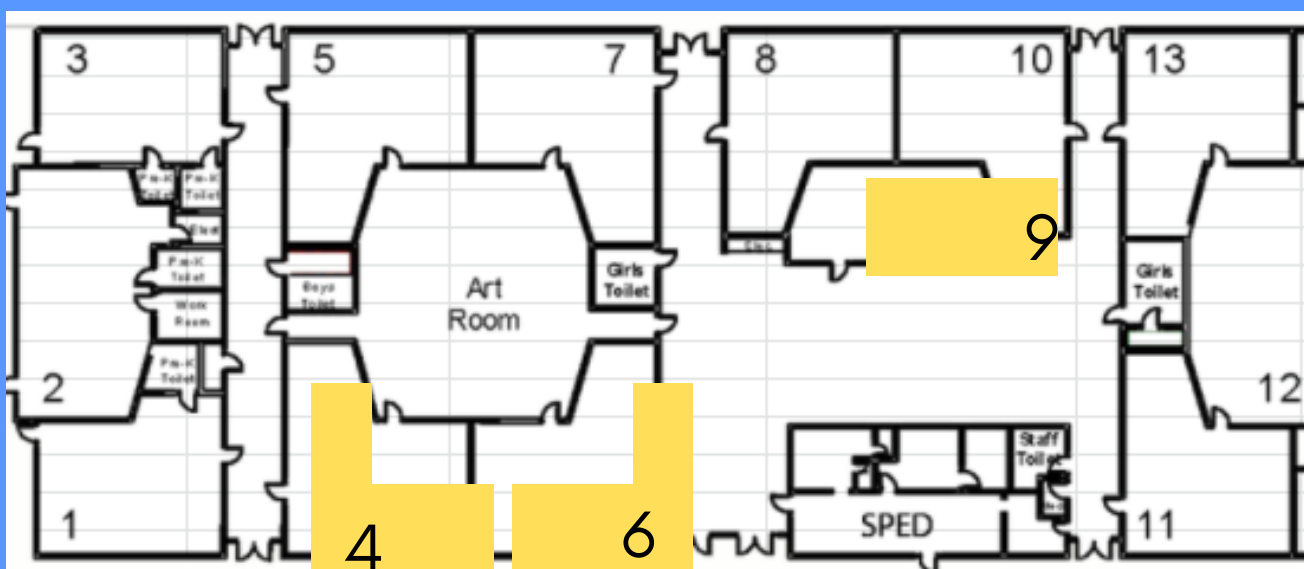
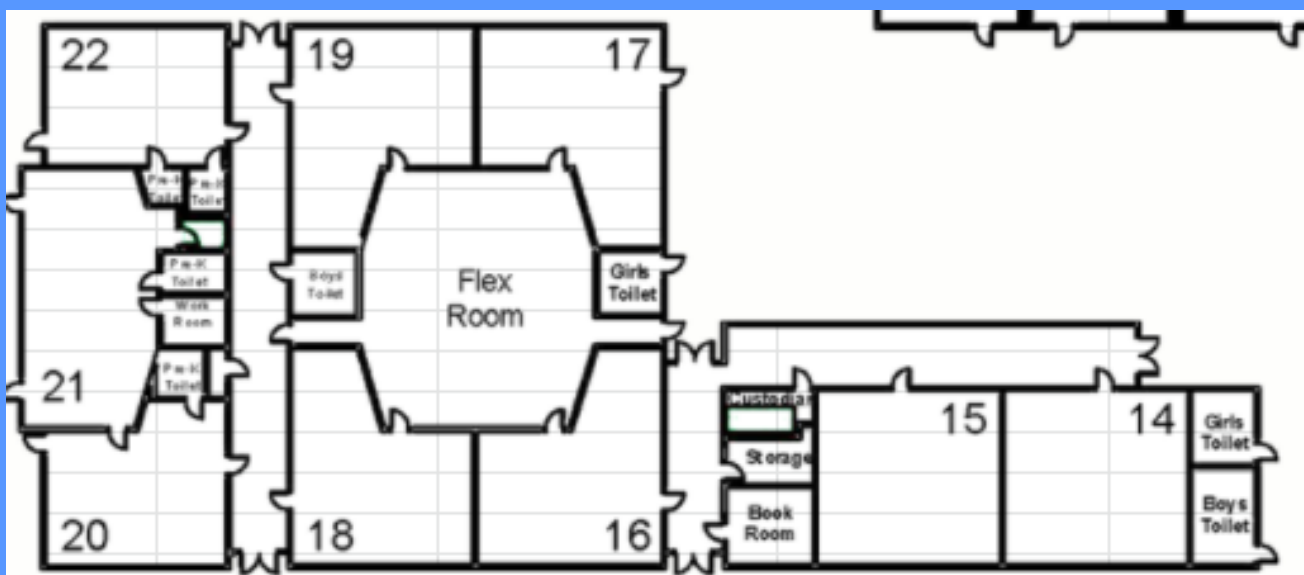
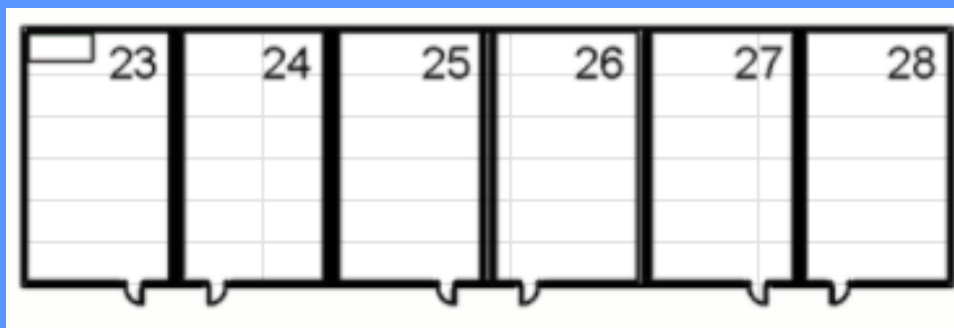
## COLLEGE PARK





# ARE SCHOOL FACILITIES ABLE TO MAINTAIN CURRENT ENROLLMENT?

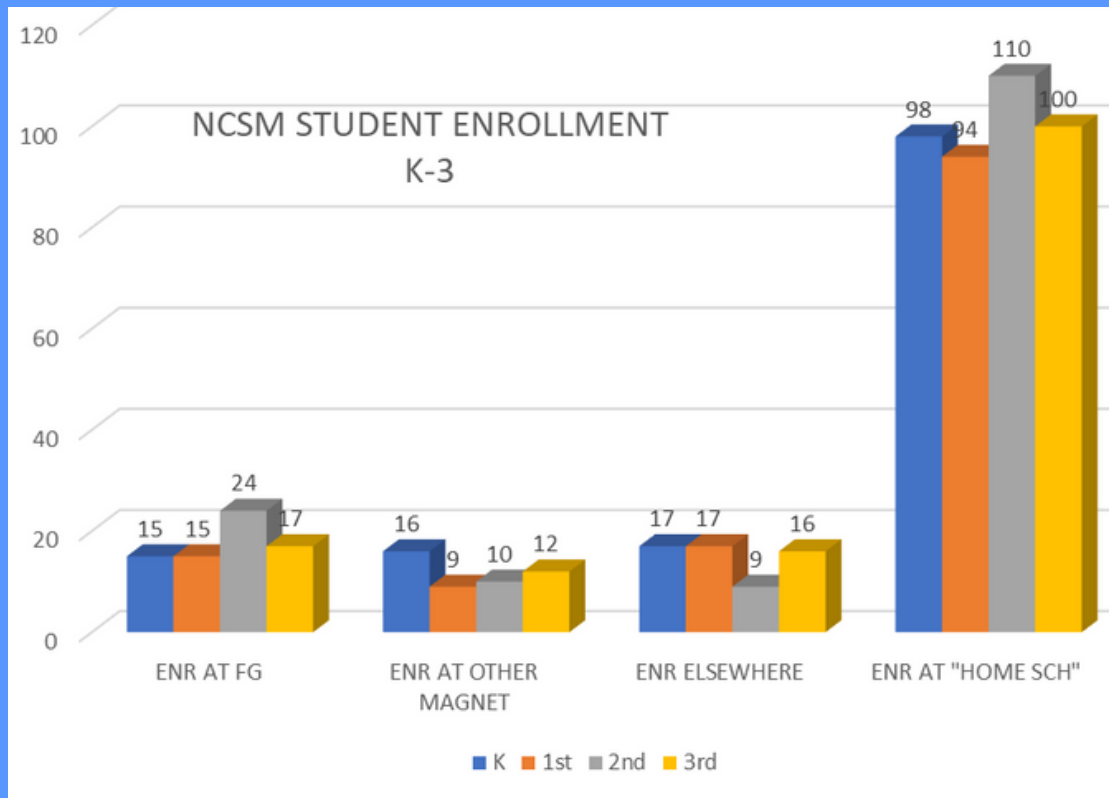
## FIESTA GARDENS



# ENROLLMENT

## NCSM K-3 Enrollment

	TOTAL	ENR AT FG	ENR AT OTHER MAGNET	ENR ELSEWHERE	ENR AT "HOME SCH"
K	146	15	16	17	98
1st	134	15	9	17	94
2nd	152	24	10	9	110
3rd	145	17	12	16	100



**SAN MATEO-  
FOSTER CITY  
SCHOOL DISTRICT**

# NCSM RESIDENTS BY SCHOOL

ALL NCSM FAMILIES					
	K	1st	2nd	3rd	TOTAL
BERES	16	8	9	14	47
BAYWOOD	21	10	22	23	76
BAYSIDE	0	1	0	1	2
BIES	0	0	1	0	1
FGIS	15	15	24	17	71
FC	0	2	0	0	2
GH	1	2	1	2	6
HIGHLANDS	7	14	11	13	45
LEAD	3	6	1	6	16
LAUREL	19	27	28	28	102
CP	11	7	6	5	29
MH	18	19	17	15	69
NSM	3	1	1	3	8
SM PARK	11	15	19	9	54
PARKSIDE	2	1	3	4	10
SUNNYBRAE	13	6	6	7	32

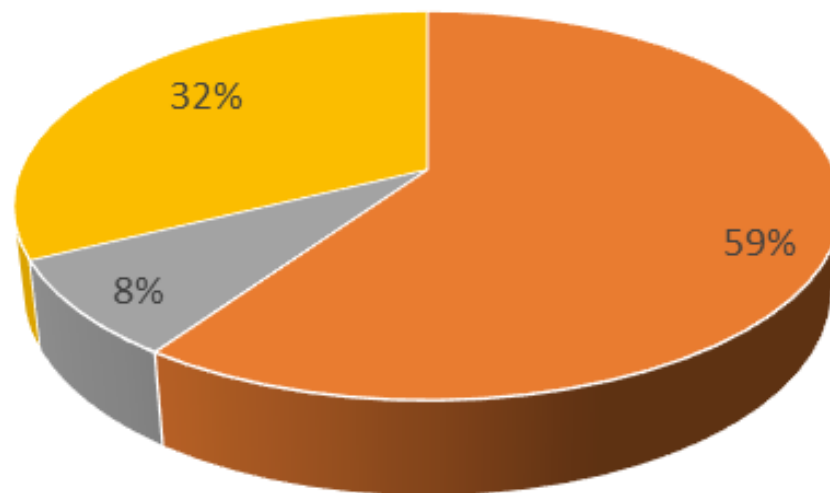


SAN MATEO-  
FOSTER CITY  
SCHOOL DISTRICT

# NCSM LANGUAGE DESIGNATION

LANGUAGE	
EL SPAN	59%
EL OTHER LANG	8%
EO or RFEP	32%

HOME LANGUAGE FOR  
NCSM STUDENTS K-3



■ LANGUAGE ■ EL SPAN ■ EL OTHER LANG ■ EO or RFEP

# Recommendations:

- The current College Park campus has sufficient space to house more than 450 students.
- Measure X (passed in 2015) and the district has set aside/allocated \$23 million for constructing a new school in NCSM.
- The SMFCSD should explore creating Pre-K programs at 6 additional elementary schools located throughout San Mateo & Foster City. This will increase capacity at the Turnbull Child Development Center.

# Recommendations:

- Locate the current College Park program and staff at the current FGIS site in August 2025.
- Locate the current FGIS program and staff at the current CP site in August 2025.
- Involve a representatives of FGIS staff and parents in a school design process facilitated by PAN consultants.
- Use the California Department of Education provided rubric related to community based schools to consider future services.

# Additional Discussion:

- Engage in a review of potential integrated support services for implementation in August 2025.
- Pursue local partnerships to create a family and community engagement plan for implementation in August 2025.
- Dedicate administrative support for a collaborative leadership and shared decision-making for implementation in August 2025.
- Pursue a deep partnership with local community partners to provide innovative, extended and expanded learning opportunities for implementation in August 2025.