

# MUSD 2014-2016 SBAC Growth and Performance

Board Report  
September 13, 2016



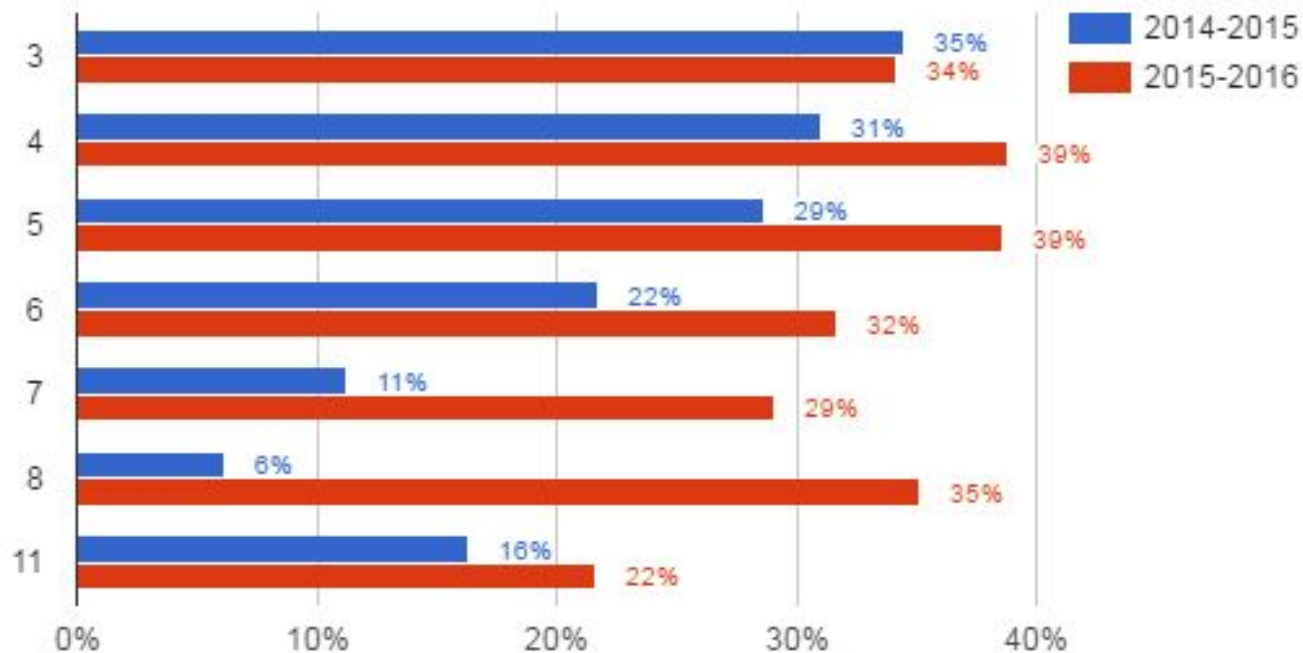
Overall Performance Compared to County and State							
ELA				MATH			
% Meet & Exceed				% Meet & Exceed			
Grade	MUSD	County	State	Grade	MUSD	County	State
3	59%	57%	43%	3	65%	63%	46%
4	67%	58%	44%	4	65%	56%	38%
5	67%	63%	49%	5	56%	53%	33%
6	73%	62%	48%	6	64%	54%	35%
7	71%	63%	48%	7	62%	56%	36%
8	73%	64%	48%	8	68%	55%	36%
11	76%	68%	59%	11	50%	49%	33%
Overall	70%	62%	49%	Overall	61%	55%	37%

# Overall Performance Percent Met and Exceeded

Grade	ELA			Math		
	2014-2015		Growth (Percentage)	2014-2015		Growth (Percentage)
	Baseline	2015-2016		Baseline	2015-2016	
3	57%	59%	3%	64%	65%	2%
4	60%	67%	11%	57%	65%	14%
5	64%	67%	5%	52%	56%	7%
6	67%	73%	9%	57%	64%	12%
7	67%	71%	7%	58%	62%	7%
8	64%	73%	13%	59%	68%	15%
11	72%	76%	5%	48%	50%	3%
Grand Total	64%	70%	9%	56%	61%	9%

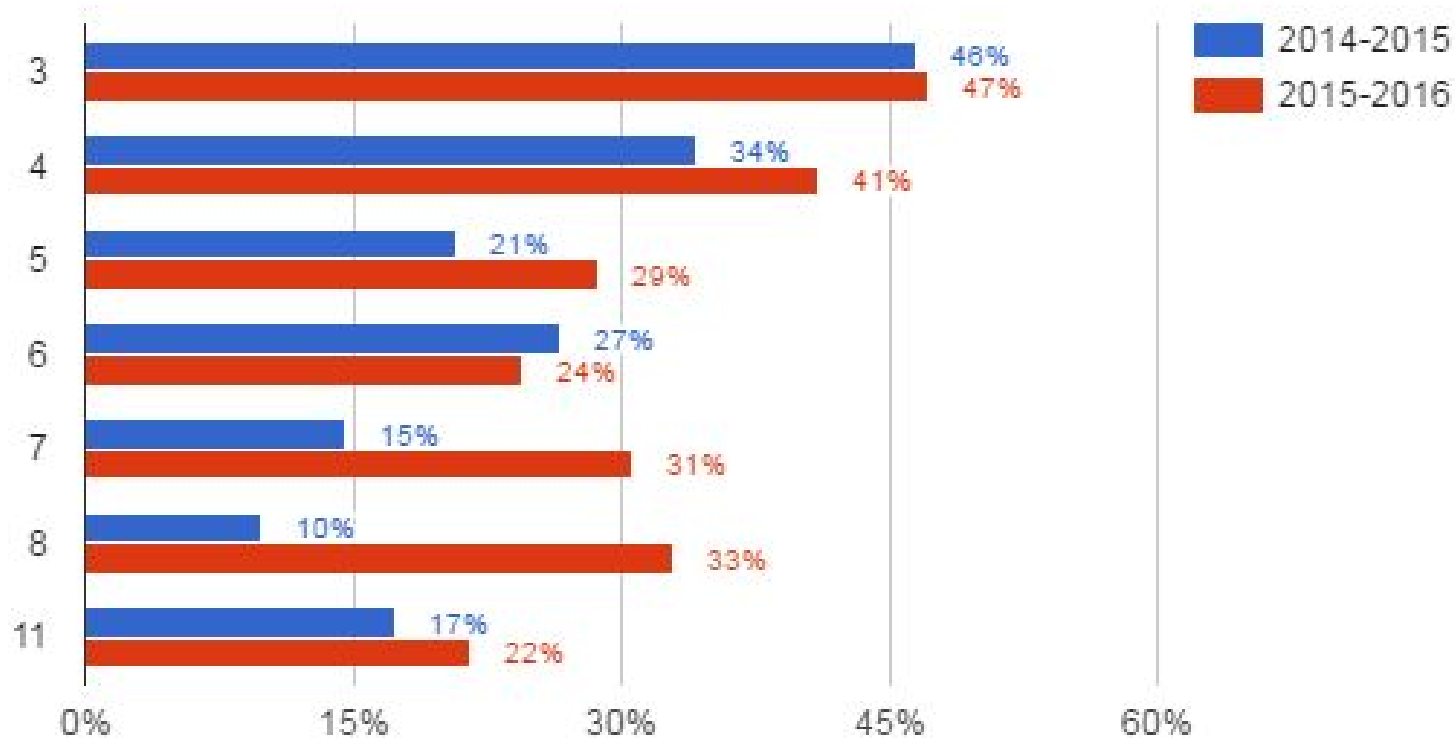
# English Learner ELA Performance

## Percent Met and Exceeded



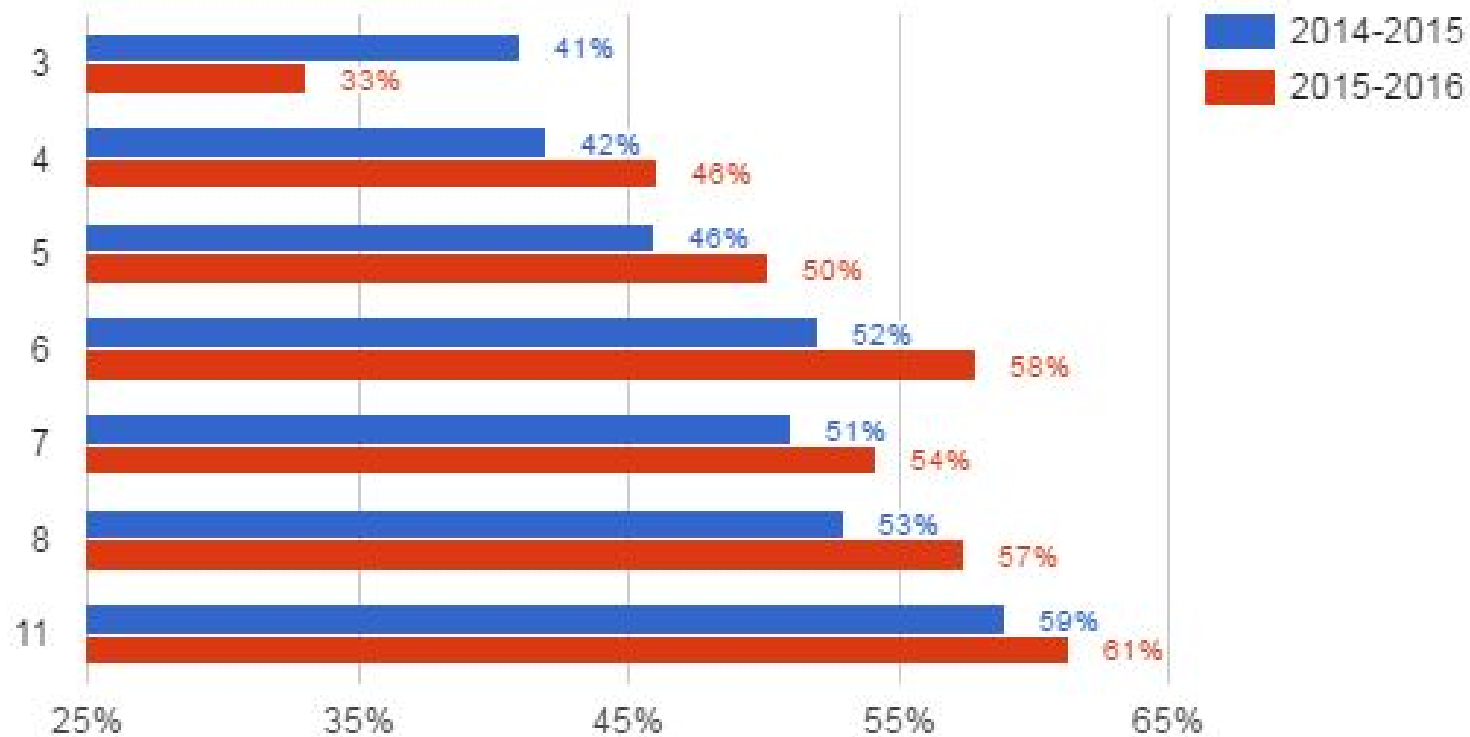
# English Learner Performance Math

## Percent Met and Exceeded

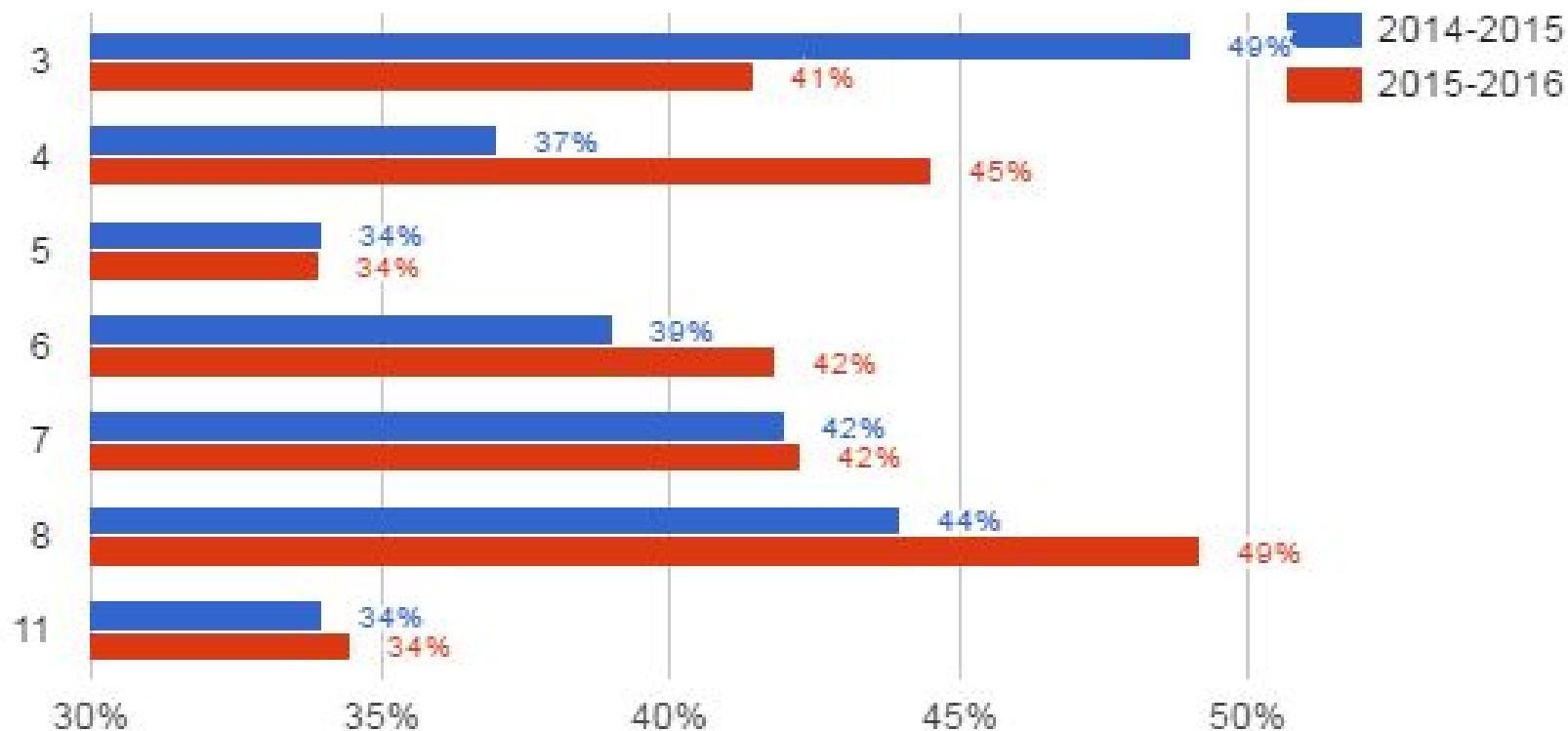


# Economically Disadvantaged ELA Performance

## Percent Met and Exceeded



# Economically disadvantaged Math Performance Percent Met and Exceeded



# Performance Cohort Overall and Subgroups Growth

ELA	2015	2016		2015	2016		2015	2016		2015	2016		2015	2016	
Population	Grade 3	Grade 4	Growth	Grade 4	Grade 5	Growth	Grade 5	Grade 6	Growth	Grade 6	Grade 7	Growth	Grade 7	Grade 8	Growth
Overall	58%	67%	16%	61%	67%	10%	64%	73%	14%	67%	71%	6%	57%	62%	8%
Hispanic/Latino	35%	38%	8%	35%	45%	29%	36%	44%	22%	42%	43%	-2%	40%	53%	33%
Asian	71%	82%	15%	73%	81%	11%	80%	87%	9%	82%	86%	5%	83%	87%	5%
White	66%	66%	0%	57%	56%	-2%	56%	76%	36%	58%	65%	12%	72%	75%	4%
Filipino	51%	62%	22%	59%	65%	10%	61%	75%	23%	63%	74%	17%	62%	67%	8%
Two or More Races	43%	60%	40%	72%	67%	-7%	37%	42%	14%	68%	67%	-1%	61%	71%	16%
Black/African American	38%	45%	18%	21%	26%	24%	47%	48%	2%	53%	50%	-6%	46%	33%	-3%
Econ. Disadvantaged	40%	46%	15%	40%	50%	25%	44%	57%	30%	49%	46%	-6%	49%	58%	18%
English Learners	37%	39%	5%	34%	38%	12%	35%	32%	-8%	24%	29%	21%	13%	35%	169%
Students w/Disabilities	28%	36%	29%	13%	21%	62%	30%	19%	-37%	18%	13%	-28%	18%	15%	-17%



# 2015-2016 Overall Cohort Results: Percent Met & Exceeded

MATH	2015	2016		2015	2016		2015	2016		2015	2016		2015	2016	
Population	Grade 3	Grade 4	Growth	Grade 4	Grade 5	Growth	Grade 5	Grade 6	Growth	Grade 6	Grade 7	Growth	Grade 7	Grade 8	Growth
Overall	64%	65%	-1%	58%	56%	-3%	53%	64%	21%	57%	52%	8%	58%	68%	17%
Hispanic/Latino	32%	27%	-16%	24%	26%	8%	18%	30%	67%	22%	29%	32%	29%	39%	34%
Asian	80%	85%	6%	76%	73%	-4%	72%	84%	17%	80%	73%	-9%	82%	86%	5%
White	63%	72%	14%	48%	41%	-15%	54%	70%	30%	45%	48%	7%	66%	71%	8%
Filipino	61%	62%	2%	54%	49%	-9%	44%	57%	30%	46%	53%	15%	44%	63%	43%
Two or More Races	57%	52%	-9%	48%	58%	21%	39%	58%	49%	53%	61%	15%	50%	63%	26%
Black/African American	54%	36%	-33%	21%	27%	29%	18%	32%	77%	20%	31%	55%	14%	27%	93%
Econ. Disadvantaged	38%	44%	16%	36%	34%	-6%	30%	42%	40%	35%	42%	20%	40%	52%	30%
English Learners	48%	40%	-17%	36%	29%	-19%	23%	24%	4%	27%	29%	7%	16%	32%	100%
Students w/Disabilities	34%	40%	18%	23%	12%	-48%	24%	22%	8%	13%	10%	-23%	15%	14%	-7%

# SBAC Performance Levels

ELA	Standard Exceeded 4	Standard Met 3	Standard Nearly Met 2	Standard Not Met 1
All Students	38%	32%	17%	14%
Hispanic/Latino	14%	28%	27%	31%
Asian	54%	30%	9%	7%
White	40%	29%	20%	12%
Filipino	29%	40%	21%	11%
Two or more Races	32%	30%	20%	18%
Black/African American	12%	29%	30%	30%
Econ. Disadvantaged	20%	32%	23%	26%
English Learners	7%	27%	30%	36%
Students w/Disabilities	7%	13%	18%	62%

MATH	Standard Exceeded 4	Standard Met 3	Standard Nearly Met 2	Standard Not Met 1
All Students	38%	23%	22%	17%
Hispanic/Latino	10%	19%	30%	41%
Asian	59%	22%	13%	6%
White	37%	20%	25%	17%
Filipino	25%	30%	30%	15%
Two or more Races	24%	27%	25%	24%
Black/African American	8%	18%	32%	43%
Econ. Disadvantaged	19%	21%	28%	32%
English Learners	13%	20%	31%	35%
Students w/Disabilities	10%	10%	16%	65%

# SBAC Performance Levels by Elementary School

<b>ELA</b>	<b>Standard Exceeded: Level 4</b>	<b>Standard Met: Level 3</b>	<b>Standard Nearly Met: Level 2</b>	<b>Standard Not Met: Level 1</b>
<b>All Students</b>	38%	32%	17%	14%
<b>Burnett</b>	28%	35%	21%	16%
<b>Curtner *</b>	54%	28%	12%	7%
<b>Pomeroy</b>	45%	32%	13%	10%
<b>Randall</b>	11%	23%	21%	44%
<b>Rose</b>	33%	26%	20%	21%
<b>Sinnott</b>	51%	26%	11%	11%
<b>Spangler</b>	33%	29%	20%	18%
<b>Weller</b>	28%	30%	24%	18%
<b>Zanker</b>	34%	29%	21%	16%

<b>MATH</b>	<b>Standard Exceeded: Level 4</b>	<b>Standard Met: Level 3</b>	<b>Standard Nearly Met: Level 2</b>	<b>Standard Not Met: Level 1</b>
<b>All Students</b>	38%	23%	22%	17%
<b>Burnett *</b>	33%	26%	27%	14%
<b>Curtner</b>	50%	24%	17%	9%
<b>Pomeroy</b>	48%	22%	19%	11%
<b>Randall</b>	14%	20%	33%	34%
<b>Rose</b>	23%	24%	29%	24%
<b>Sinnott</b>	58%	23%	13%	5%
<b>Spangler</b>	29%	25%	26%	20%
<b>Weller</b>	38%	25%	21%	16%
<b>Zanker</b>	33%	25%	27%	15%

# SBAC Performance Levels by Secondary School

<b>ELA</b>	<b>Standard Exceeded: Level 4</b>	<b>Standard Met: Level 3</b>	<b>Standard Nearly Met: Level 2</b>	<b>Standard Not Met: Level 1</b>
<b>All Students</b>	38%	32%	17%	14%
<b>Rancho</b>	29%	36%	21%	14%
<b>Russell</b>	40%	38%	13%	9%
<b>Cal Hills</b>	5%	13%	36%	46%
<b>MHS</b>	48%	33%	12%	7%

<b>MATH</b>	<b>Standard Exceeded: Level 4</b>	<b>Standard Met: Level 3</b>	<b>Standard Nearly Met: Level 2</b>	<b>Standard Not Met: Level 1</b>
<b>All Students</b>	38%	23%	22%	17%
<b>Rancho</b>	35%	21%	24%	20%
<b>Russell</b>	50%	22%	15%	13%
<b>Cal Hills</b>	0%	3%	3%	93%
<b>MHS</b>	29%	26%	24%	22%

MUSD Elementary Schools % Met & Exceeded											
ELA	Burnett	Curtner	Pomeroy	Randall	Rose	Sinnott	Spangler	Weller	Zanker	MUSD	County
3	61%	78%	70%	24%	41%	71%	56%	47%	61%	59%	57%
4	57%	81%	71%	33%	62%	80%	66%	59%	58%	67%	58%
5	56%	82%	85%	44%	64%	74%	63%	51%	65%	67%	63%
6	74%	85%	83%	38%	67%	86%	60%	74%	69%	73%	62%
Math											
3	68%	78%	78%	28%	59%	71%	51%	62%	66%	65%	63%
4	59%	73%	71%	36%	43%	90%	66%	61%	58%	65%	56%
5	53%	66%	63%	35%	38%	72%	44%	60%	49%	56%	53%
6	58%	77%	69%	36%	49%	89%	55%	68%	59%	64%	54%

# MUSD Secondary Schools % Meet & Exceeded

ELA	Rancho	Russell	County
7	62%	79%	63%
8	68%	76%	68%
Math			
7	55%	68%	56%
8	56%	76%	55%

ELA	Cal Hills	MHS	County
11	18%	81%	68%
Math			
11	3%	55%	49%

