

English Learner Progress Report and CELDT Annual Update

Board Report
September 27, 2016
Learning and Development

2015-16 English Learner Progress and Proficiency Report & Annual Measurable Achievement Objectives (AMAOs) Reports (previously provided for Title III)

The English Learner Progress and Proficiency Report (2015-16) replace the AMAO Reports (2014-15 and earlier).

Percentage of ELs Making Annual Progress in Learning English	2014-15	2015-16
Number of Annual CELDT Takers	2,295	2,289
Number in Cohort Making Annual Progress	1,673	1,664
Percentage in Cohort Making Annual Progress	73%	73%

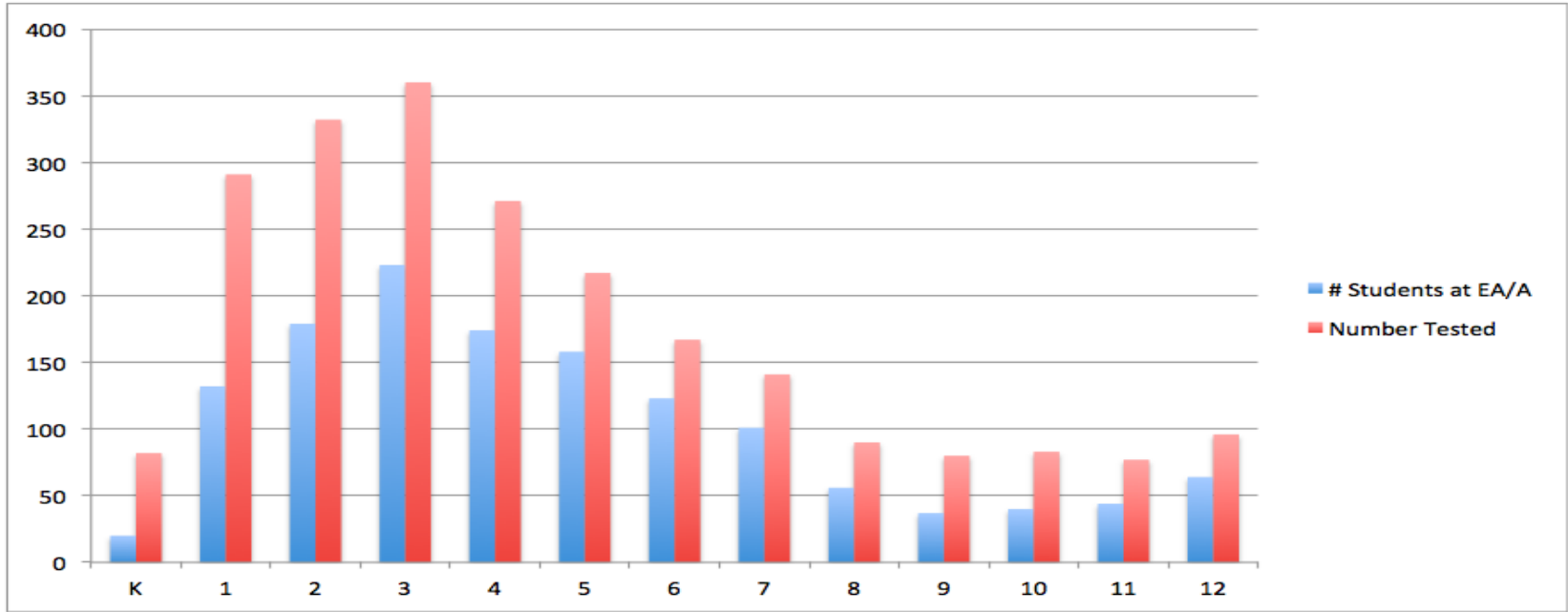
MUSD number of annual CELDT taker have slightly decreased from 14-15 to 15-16.
The percentage of students making progress remains constant.

	14-15	15-16
Percentage in Cohort Attaining the English Proficient Level: Less than 5 Years Cohort		
Number of English Learners in Cohort	2,138	1,989
Number in Cohort Attaining the English Proficient Level	821	827
Percentage in Cohort Attaining the English Proficient Level	38.4%	41.6%
Percentage in Cohort Attaining the English Proficient Level: 5 Years or More Cohort		
Number of English Learners in Cohort	703	761
Number in Cohort Attaining the English Proficient Level	456	525
Percentage in Cohort Attaining the English Proficient Level	64.9%	69.0%

There has been a decrease in the newcomer cohort and an increase in the 5+ cohort.
 There has been a 5% increase in students achieving proficiency level in the 5+ cohort.

of Students Meeting CELDT Criterion

	K	1	2	3	4	5	6	7	8	9	10	11	12	All
# Students	20	132	179	223	174	158	123	101	56	37	40	44	64	1,351
Number Tested	82	291	332	360	271	217	167	141	90	80	83	77	96	2,287
% Students	24%	45%	54%	62%	64%	73%	74%	72%	62%	46%	48%	57%	67%	59%

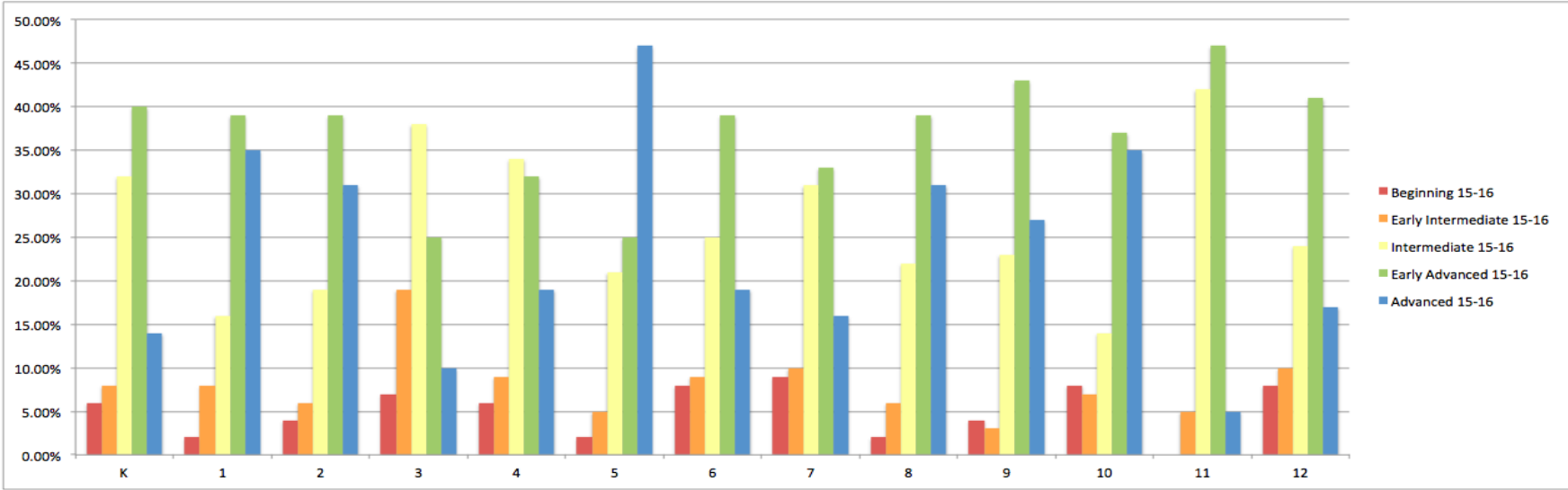


District Wide Visual of CELDT Levels and Grades

The red bars represent the amount of students tested and the blue bars represent the number of students achieving Early Advanced or Advanced.

CELDT Levels by Grade

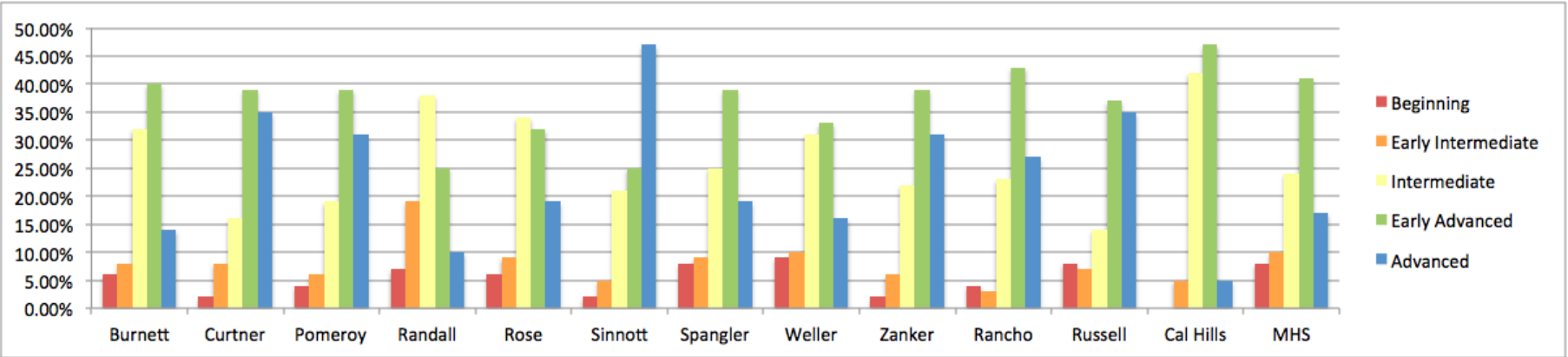
	K	1	2	3	4	5	6	7	8	9	10	11	12
Advanced 15-16	14.00%	35.00%	31.00%	10.00%	19.00%	47.00%	19.00%	16.00%	31.00%	27.00%	35.00%	5.00%	17.00%
Early Advanced 15-16	40.00%	39.00%	39.00%	25.00%	32.00%	25.00%	39.00%	33.00%	39.00%	43.00%	37.00%	47.00%	41.00%
Intermediate 15-16	32.00%	16.00%	19.00%	38.00%	34.00%	21.00%	25.00%	31.00%	22.00%	23.00%	14.00%	42.00%	24.00%
Early Intermediate 15-16	8.00%	8.00%	6.00%	19.00%	9.00%	5.00%	9.00%	10.00%	6.00%	3.00%	7.00%	5.00%	10.00%
Beginning 15-16	6.00%	2.00%	4.00%	7.00%	6.00%	2.00%	8.00%	9.00%	2.00%	4.00%	8.00%	0.00%	8.00%



Grades 3 and 4 have highest percentage of students at the Early Intermediate and Intermediate levels.

CELDT Levels by Site

	Burnett	Curtner	Pomeroy	Randall	Rose	Sinnott	Spangler	Weller	Zanker	Rancho	Russell	Cal Hills	MHS
Advanced	14.00%	35.00%	31.00%	10.00%	19.00%	47.00%	19.00%	16.00%	31.00%	27.00%	35.00%	5.00%	17.00%
Early Advanced	40.00%	39.00%	39.00%	25.00%	32.00%	25.00%	39.00%	33.00%	39.00%	43.00%	37.00%	47.00%	41.00%
Intermediate	32.00%	16.00%	19.00%	38.00%	34.00%	21.00%	25.00%	31.00%	22.00%	23.00%	14.00%	42.00%	24.00%
Early Intermediate	8.00%	8.00%	6.00%	19.00%	9.00%	5.00%	9.00%	10.00%	6.00%	3.00%	7.00%	5.00%	10.00%
Beginning	6.00%	2.00%	4.00%	7.00%	6.00%	2.00%	8.00%	9.00%	2.00%	4.00%	8.00%	0.00%	8.00%



District Wide Visual of CELDT Levels and School Sites

Majority of students with the greatest language needs (yellow and orange) Randall, Rose, Burnett, and Weller.