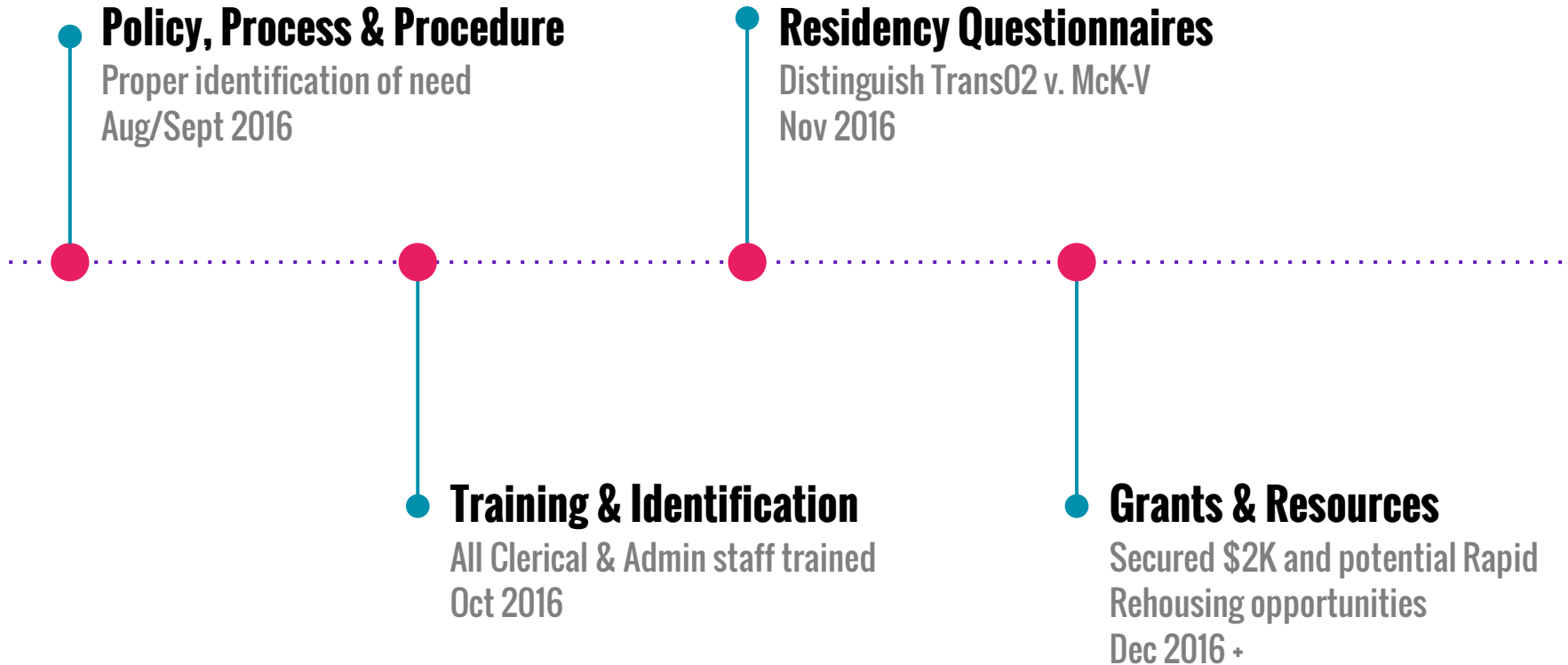


McKinney-Vento Families in Transition

January 10, 2017

**Family & Community Engagement
Nicole Steward, MSW**

McKinney-Vento Timeline



Who is eligible?

children and youths who lack a fixed, regular, and adequate nighttime residence.

This also includes:

Temporarily sharing the housing of others, i.e. "Doubled up"

Motel/Hotel/Shelter

RV/Van/Car

Parks/Public places

Places not ordinarily used as regular sleeping accommodations for human beings.

— — —

75%



of the 1,258,182 homeless students in the United States live "doubled-up," a percentage that has increased dramatically since the Great Recession began in 2008 (Barshay, 2014).

MUSD Families in Transition

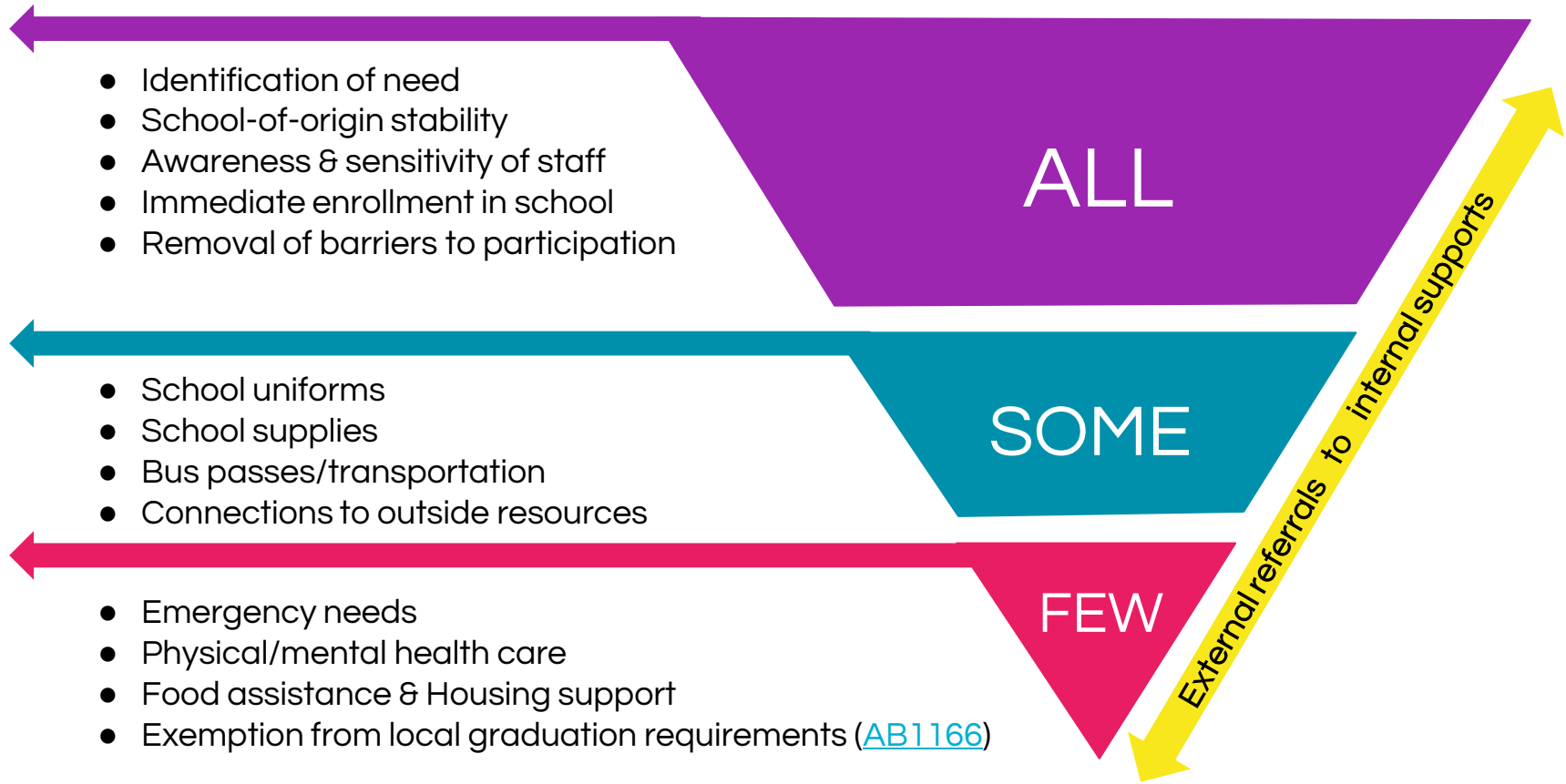
2013-14 0

2014-15 67

2015-16 130

2016-17 357*

** Student Residency Questionnaires*



What services are available under McKinney-Vento?

McKinney-Vento Next Steps

Continued identification,
enrollment, removal of barriers, and
support of students in transition.

- Prevention activities around attendance & homeless youth
- Ongoing professional development for staff re: policies & procedures to serve & enroll students
- Outreach to teachers & students to help identify students in need
- Standardization of forms for enrollment and documentation
- MOU for Social Work interns from local colleges

— — —