

McCandless Elementary Site Work Bidding

January 24, 2017

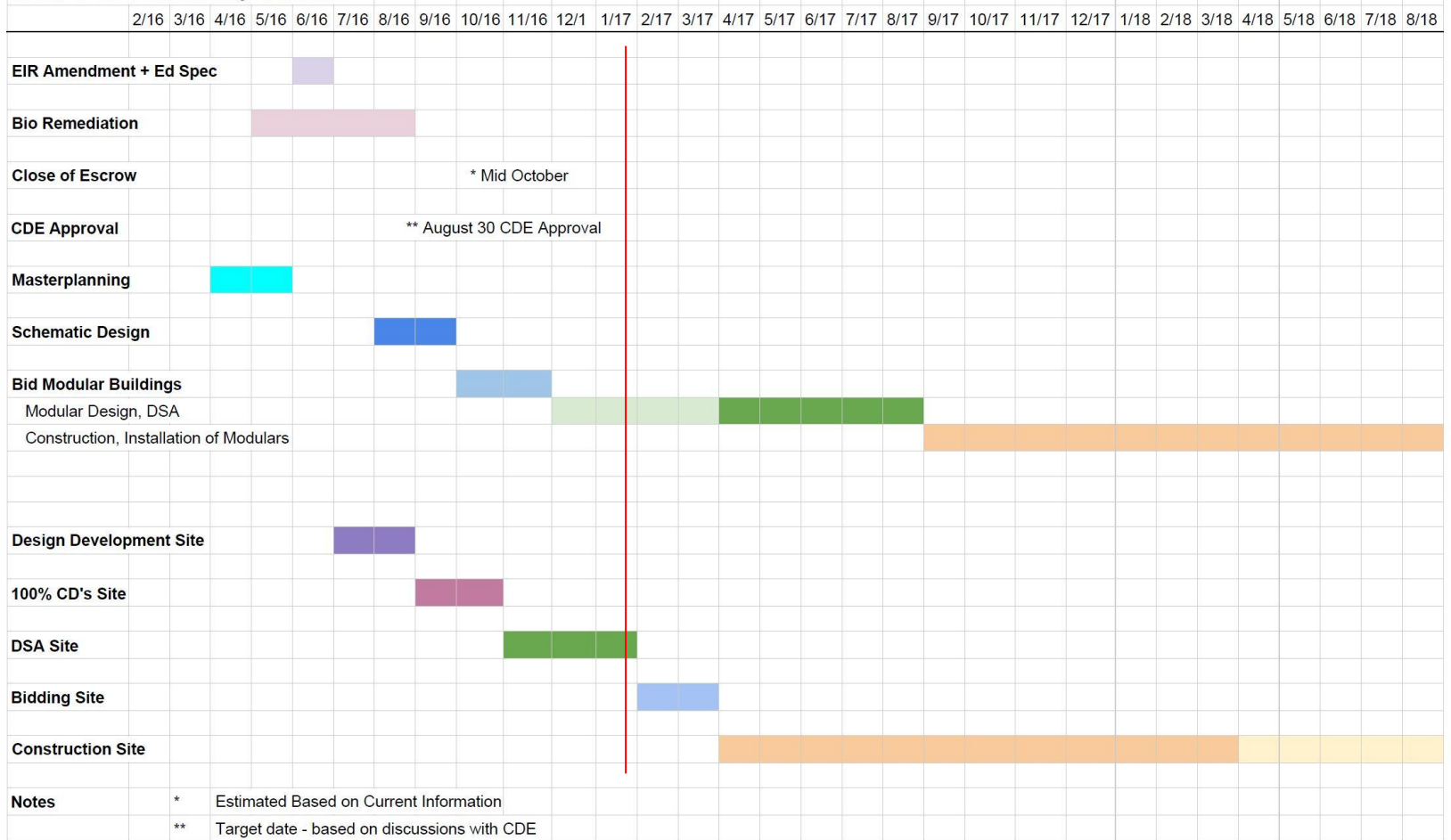
Purpose

- To Describe to the Board our proposed bidding strategy.
- Receive recommendations or direction from the Board
- Make changes to our bidding strategy per Board direction

Reference Guide Review

Project Schedule

Phase 1 - New Elementary Schedule



Budget and Bid Summary

Total Project Budget \$16.0M

	Sept '16 Estimate	Building Bid Result	Recent Sitework Estimate
Modular Buildings	\$8.0M	\$9.0M	\$9.0M
Site Work	\$3.8M	\$3.8M	\$4.6M
Change Orders	\$620K	\$620K	\$620K
Escalation (6%)	\$781K	\$228K	\$0
Soft Costs	\$2.6M	\$2.6M+	\$2.6M+
Total Estimated Cost	\$15.8M	\$16.2M+	\$16.8M

Sitework Scope

How did the sitework cost go up?

- **Some Escalation (Inflation)**
- **In User Meetings, Scope was added**
 - Playground Equipment increased, ball walls were added.
 - Synthetic safety surface was added at playgrounds
 - (2) ½ basketball courts were added
- **Assumptions were made by estimators**
 - 6000 cubic yards of soil import and grading assumed in estimate
- **Conservative civil engineering cost more**
 - Thick paving sections called for in most areas
- **Reminder, it hasn't bid yet!**
 - We *might* get great bids and come in on budget.

Measures considered to reduce costs

Recommended

- No imported soil (if possible), less grading
- Lower site at areas of future phases
- Thinner paving at blacktop areas
- Base Bid: $\frac{1}{2}$ the playground equip.
 - Alternate (Optional): the other $\frac{1}{2}$ of the playground equipment
- Alternate (Optional): the playground surface upgrade
- Landscaping, fencing and site furnishings
- $\frac{1}{2}$ of the Admin's second Floor

Bidding Schedule

Grading and Paving

Underground Utilities

Site Concrete

Underground Utilities

Site Concrete

Electrical and Low Voltage

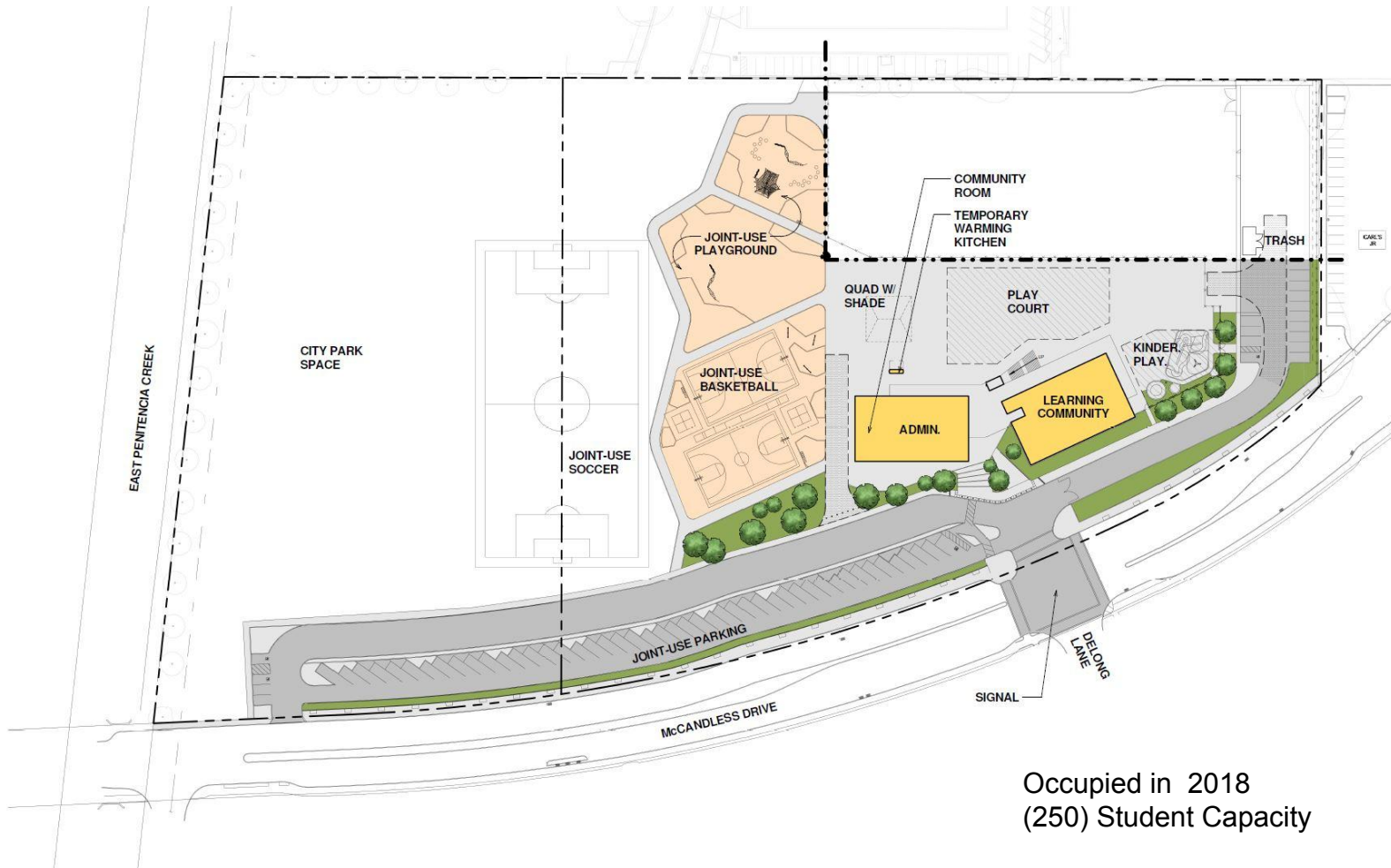
Landscape, Irrigation and Playground Equipment

Site Fencing, Gates and Signage

**Out to bid in
February**

**Out to bid in
March**

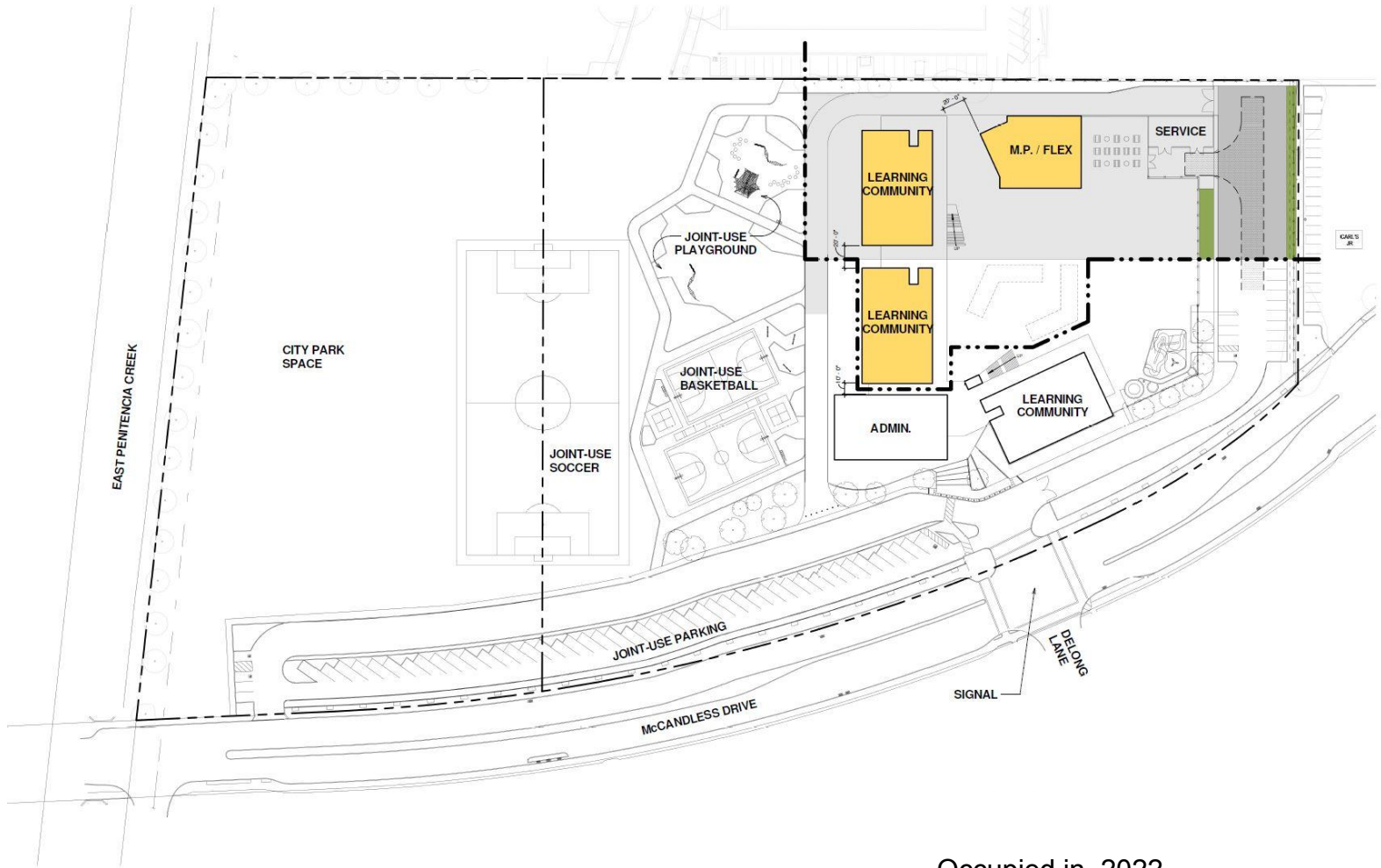
Reference Material



Occupied in 2018
(250) Student Capacity

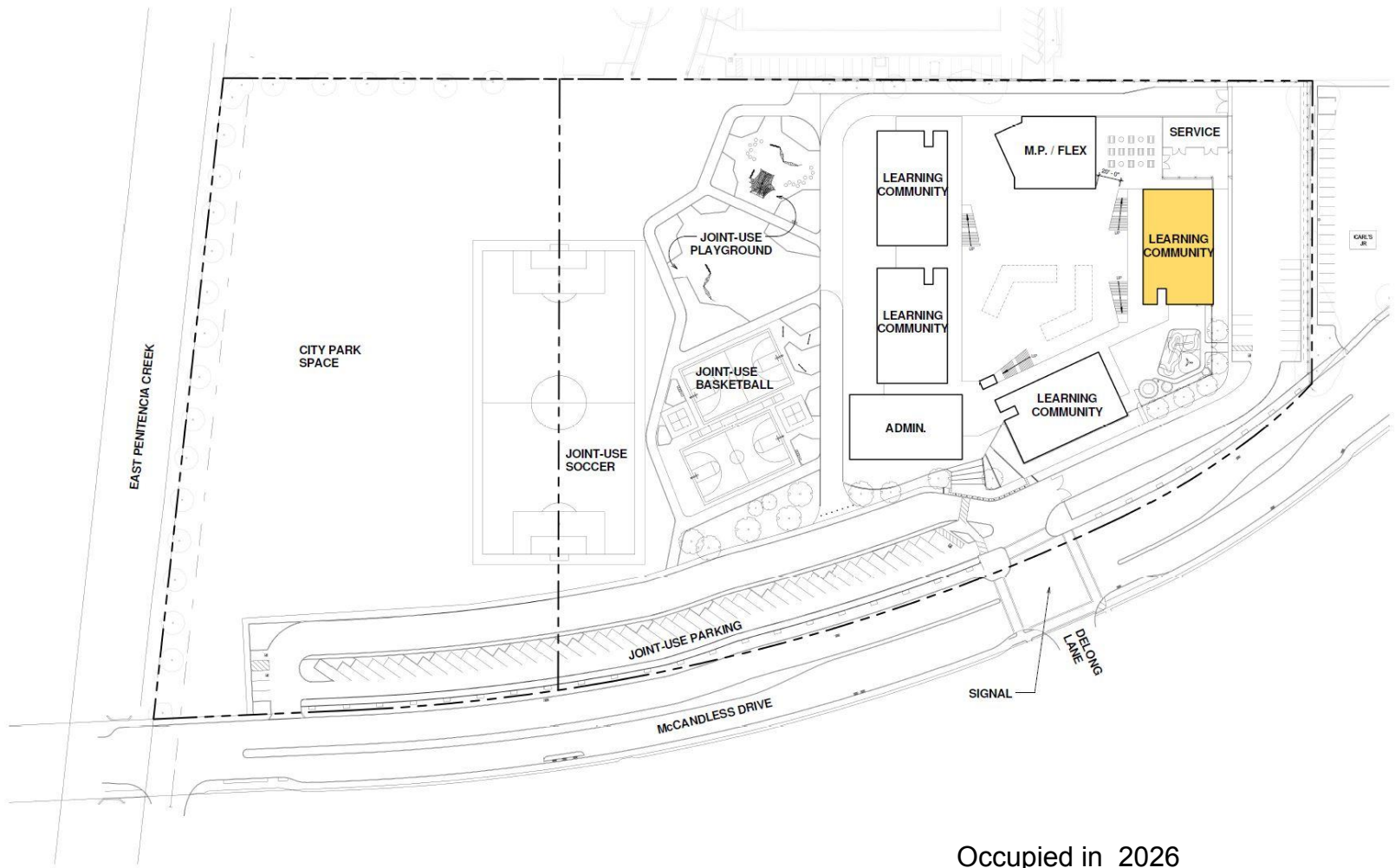
Two Story Classrooms/LC/Hybrid
Two Story Administrative Building
Temporary Food Services Kiosk
Outdoor Covered Lunch Area
Community Room

Phase 1



Phase 2

Occupied in 2022
(2) Two Story Learning Communities
Multi Purpose Building with Food Services
(350) Student Capacity
(600) Total Student Capacity for School



Occupied in 2026
Two Story Learning Community
(200) Student Capacity
(800) Total Student Capacity for School

Phase 3



2ND GRADE
6,212 SF

M.P.
8,000 SF

1ST GRADE

DELONG
LANE



Completed Build Out

