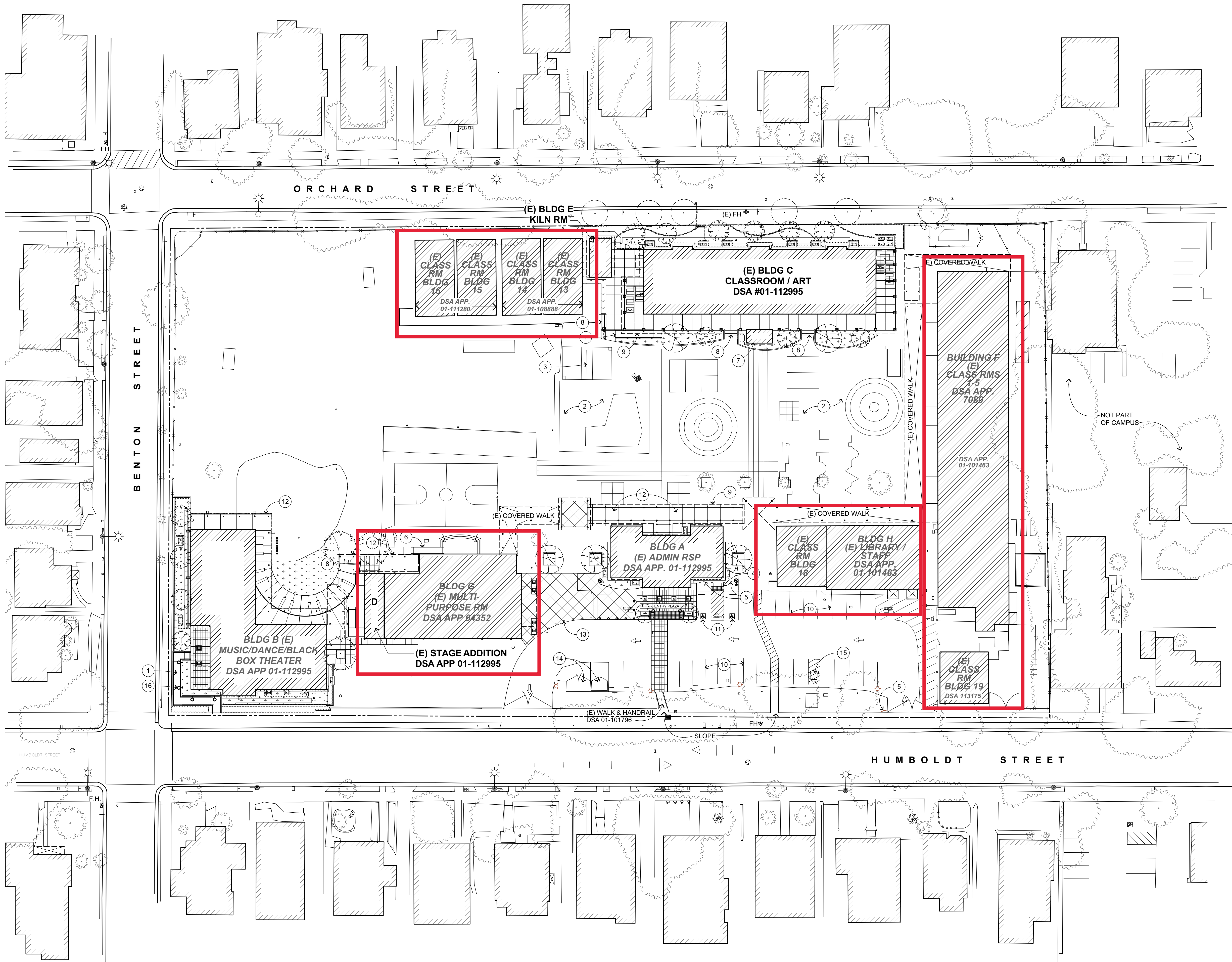


P:\1140.00 - Santa Rosa Charter School for the Arts, SRCSD\Drawings\04-CD\Phase 2-CD.pln/2/1/2017:8:49 AM



CAMPUS SITE PLAN  
 1" = 30' TRUE NORTH

SITE PLAN KEYNOTES

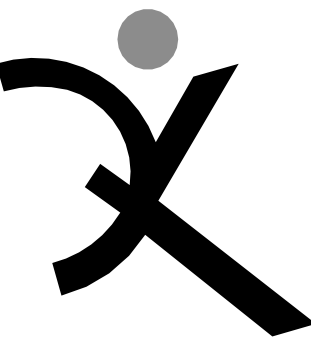
- (E) ACCESSIBLE RAMPS, DSA APP #01-112995
- (E) PLAYGROUND TO REMAIN
- (E) BALL WALL PC # 03-114394
- (E) DETECTABLE WARNING SURFACE, DSA APP #01-112995
- PARKING SIGNAGE, DSA APP #01-112995
- (E) RAMP TO REMAIN
- (E) ELEVATOR, DSA APP #01-112995
- (E) ACCESSIBLE STAIRS AND HANDRAILS
- LINE OF ROOF ABOVE, TYP
- (E) PARKING STRIPING TO REMAIN
- (E) ACCESSIBLE PARKING SPACES, DSA APP #01-112995
- (E) COVERED WALKWAY
- (E) PIPE BOLLARDS TO REMAIN
- (E) TRASH ENCLOSURES TO REMAIN
- (E) FLAG POLE TO REMAIN
- ELECTRICAL ITEM, S.E.D.

SITE PLAN LEGEND

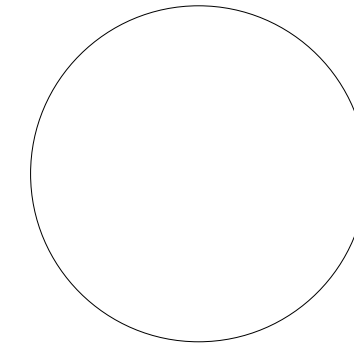
- x — x — x — (E) FENCE TO REMAIN
- — — — — FENCE
- — — — — PROPERTY LINE
- (Hatched Box) (E) BUILDING TO BE MODERNIZED
- (Horizontal Lines Box) (E) COVERED WALKWAY
- (Empty Box) (E) BUILDING TO REMAIN
- (Grid Box) (E) CONC PAVING
- (Dotted Box) (E) LANDSCAPING
- FH (Circle with X) (E) FIRE HYDRANT

SCOPE OF WORK IN PORTABLES

- ROOM 13:
- (E) MIRROR AND BARS TO REMAIN. REPLACE (E) MARKERBOARD, MONITOR, O.F.C.I., S.E.D. REPLACE (E) FLOOR BASE. PAINT
- ROOMS 14-16:
- REPLACE (E) CARPET W/ NEW CARPET TILE, MONITOR, O.F.C.I., S.E.D. PAINT DOORS, PAINT TACKWALL W/ NON-BRIDGING PAINT, NEW FLOOR BASE. REPLACE (E) MARKERBOARD
- ROOM 18:
- REPLACE (E) LINOLEUM W/ VCT IN CLASSROOM AND TOILET ROOM. REPLACE CARPET W/ NEW CARPET TILE (ROOM 60% CARPET, 40% VCT). REPLACE RESILIENT BASE. PAINT TACKWALL W/ NON-BRIDGING PAINT, PAINT DOOR. REPLACE (E) MARKERBOARD, MONITOR, O.F.C.I., S.E.D. PROVIDE SIGN AT EXT. DOOR AND TOILET ROOM, SEE DETAIL ON A-2.1F
- ROOM 19:
- REPLACE (E) MODULAR TRIM W/ 1x8 TRIM. REPLACE (E) CARPET W/ NEW CARPET TILE, MONITOR, O.F.C.I., S.E.D. PAINT DOORS



QUATTROCCHI KWOK  
 ARCHITECTS  
 636 FIFTH ST.  
 SANTA ROSA, CA 95404  
 (707) 576-0829  
 (707) 576-0295 FAX



SANTA ROSA  
 CHARTER  
 SCHOOL FOR  
 THE ARTS -  
 PHASE 2

SANTA ROSA CITY  
 SCHOOLS

756 HUMBOLDT STREET  
 SANTA ROSA, CA 95404

ARCH PROJECT NO:	1140.00
DRAWN BY:	KMC
DRAWING SCALE:	
PTN:	

CONSTRUCTION DOCUMENTS

FEBRUARY 13, 2017

SHEET TITLE

CAMPUS SITE  
 PLAN

SHEET NUMBER

A-1.1