

DataZone Overview

Campbell Union School District

Marcy Lauck, Director of Data Governance
Marcy_Lauck@sccoe.org



Welcome to the DataZone

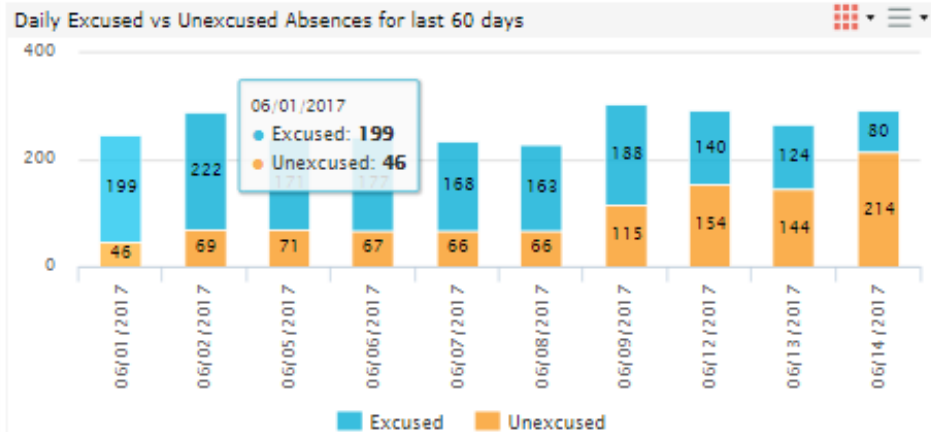
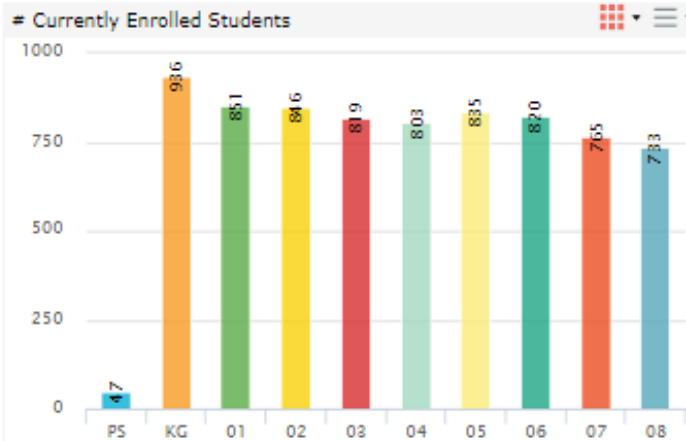


Administration Teachers Assessments Early Warning Student Search System

Summary

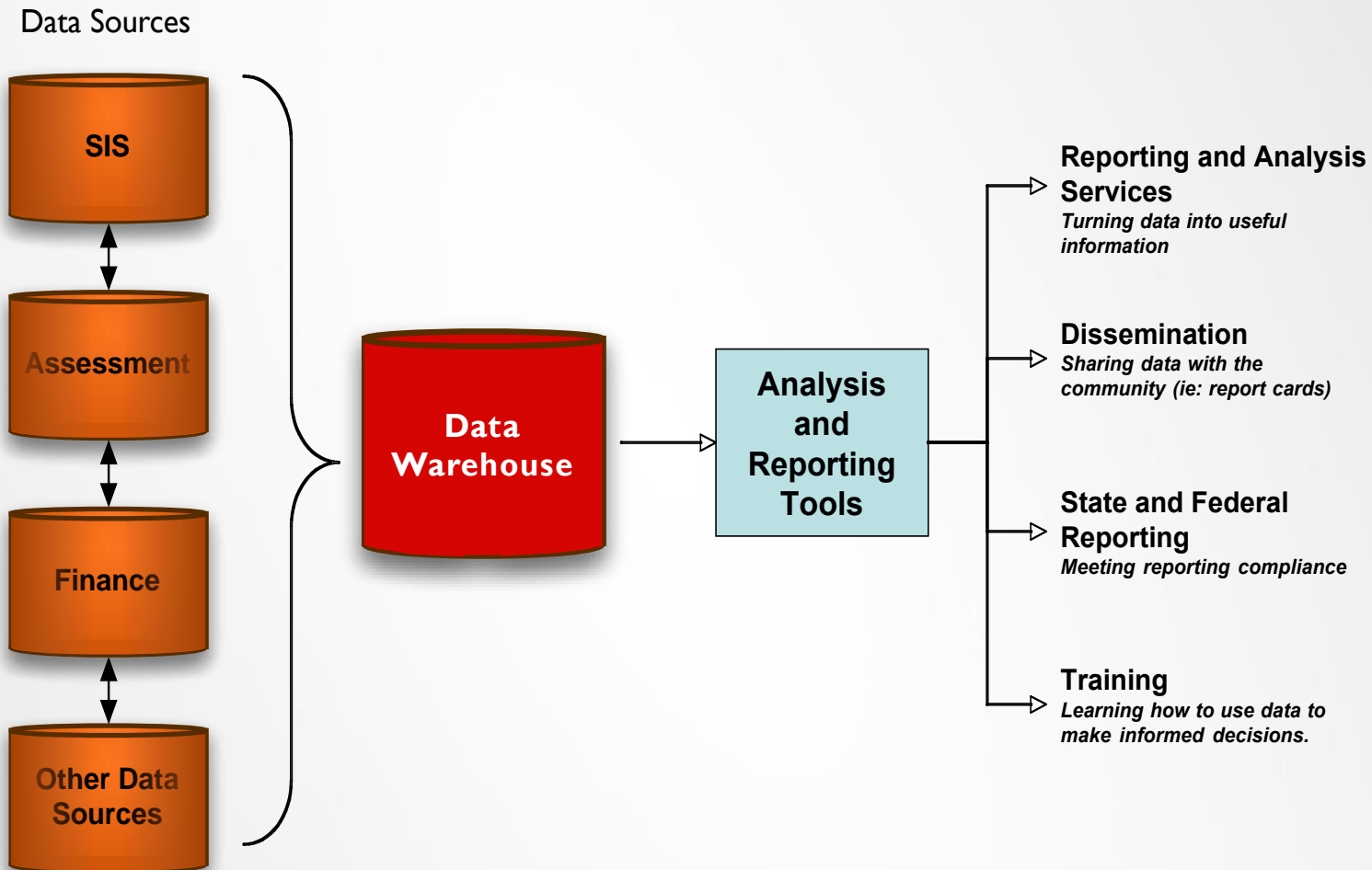
District	School	Grade	Ethnicity	Gender	SPED	Student Cohort		
Campbell Union School District	[All Schools] Blackford Elementary Campbell Middle School	[All Grades] PS KG	[All] Asian Black or African American	[All]	[All]	[None Selected]		
Language Proficiency	RFEP 3+ Yrs	LTEL 4+ Years	Economically Disadvantaged	Foster Youth	Homeless	Migrant	Lunch Status	Student Status
[All] Initial Fluent English Proficient English Learner	[All]	[All]	[All]	[All]	[All]	[All]	[All] Free Reduced	Active

# Schools	# Students	% Attn. YTD	# Incidents
12	7,455	96.4%	2,599



Santa Clara County
Office of Education

How DataZone Works

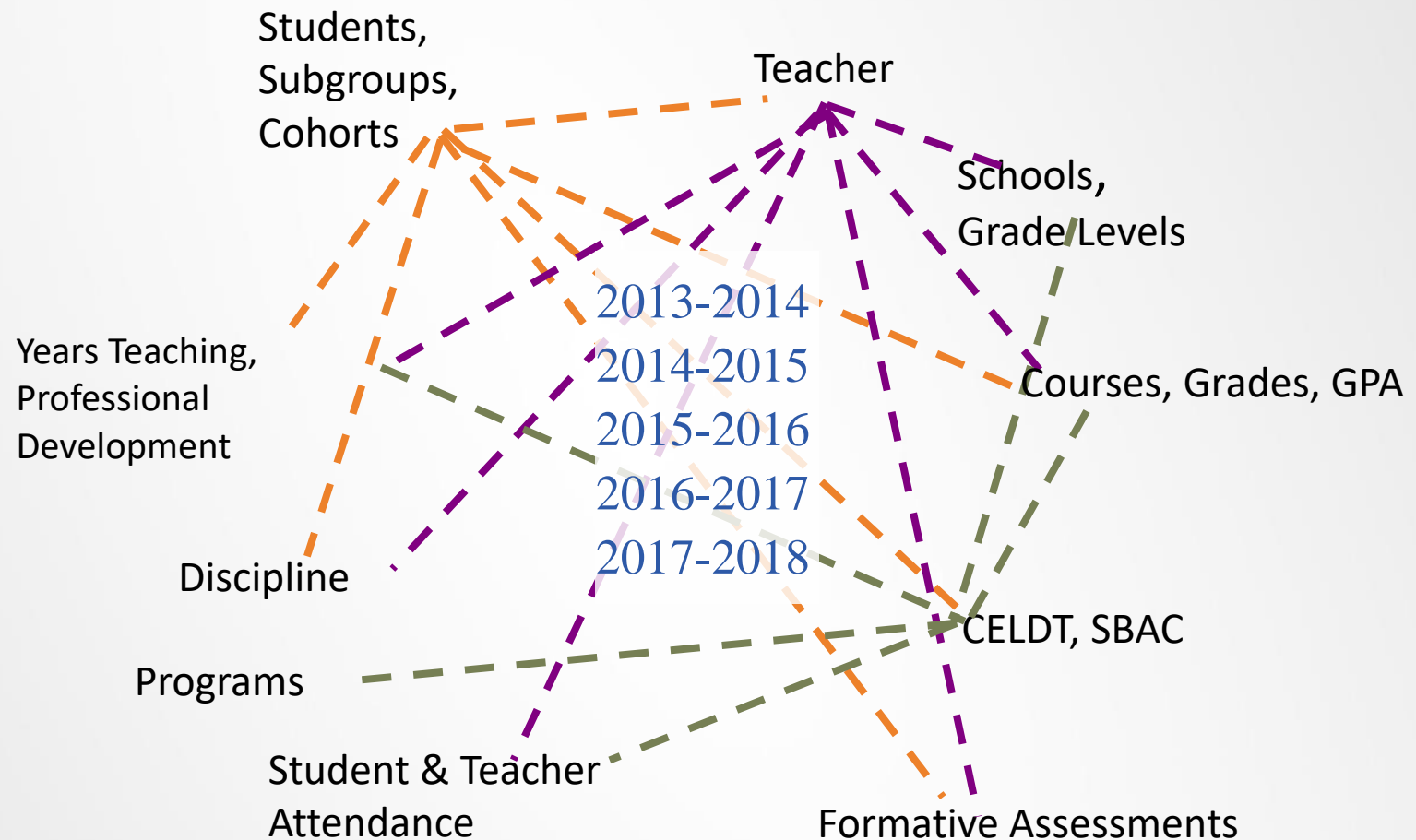


Shine A Light on Data

- ◆ Making Data Pivotal
 - ◆ Identify a group of students or a process that can be improved using data
 - ◆ Answer new data needs
 - ◆ Improve data validation process

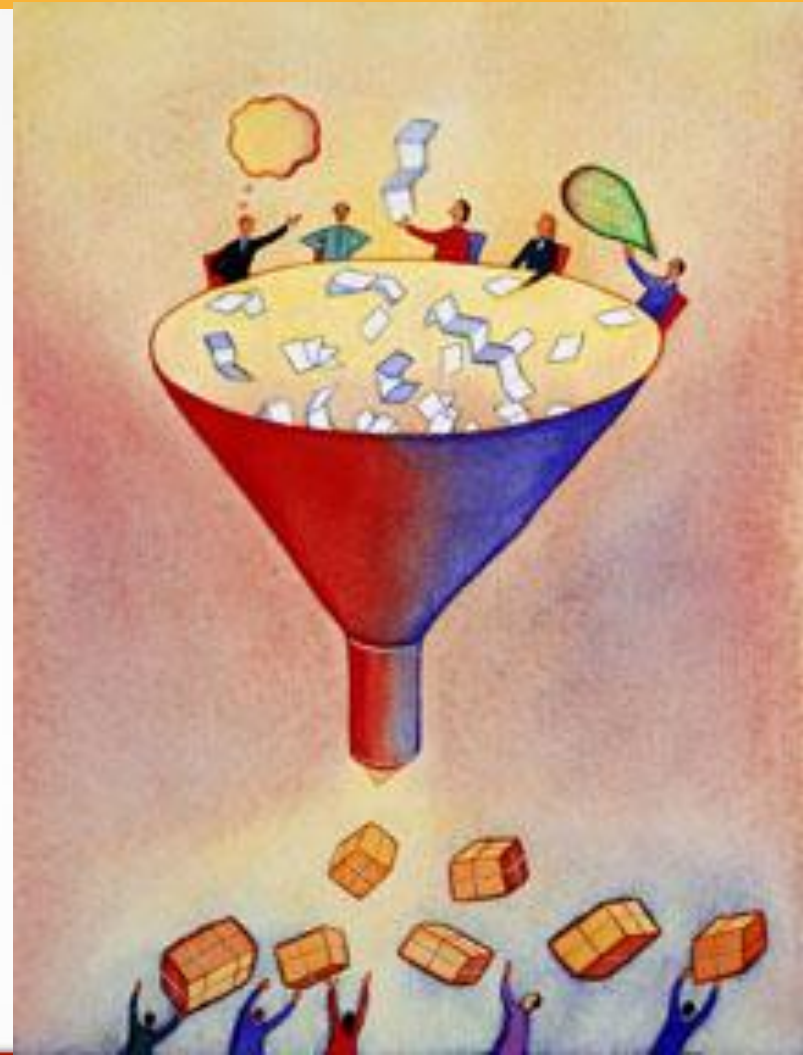


Data for Instructional Coherence



DataZone Features

- ◆ Cohort Creation
- ◆ Early Warning Indicators
- ◆ LCAP Support
- ◆ Teacher Dashboards
- ◆ Student Profiles
- ◆ Local Assessment Loads
- ◆ Ad Hoc functionality



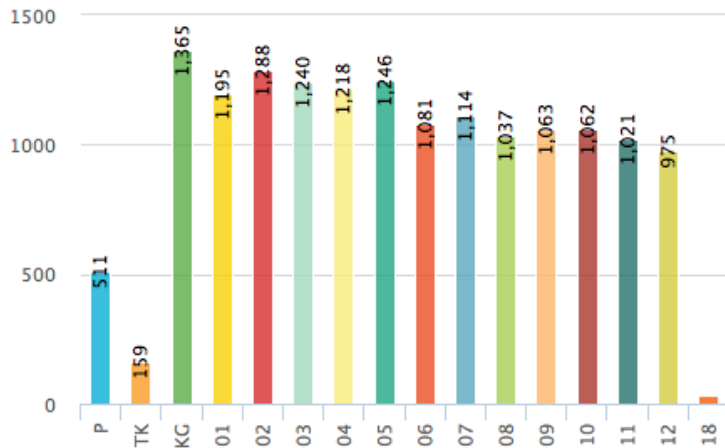
DataZone Demo

- 90 Dashboards
- 300+ Metrics

Gainers Stickers Sliders - Overall

School Year	Test Result	2014-2015					n=
		Beginning	Early Intermediate	Intermediate	Early Advanced	Advanced	
2013-2014	Beginning	166	117	87	24	2	396
	Early Intermediate	32	126	252	55	10	475
	Intermediate	13	87	464	394	95	1053
	Early Advanced	0	4	87	312	189	592
	Advanced	0	0	6	53	147	206
	n=	211	334	896	838	443	

Currently Enrolled Students



AP Courses Year over Year

