

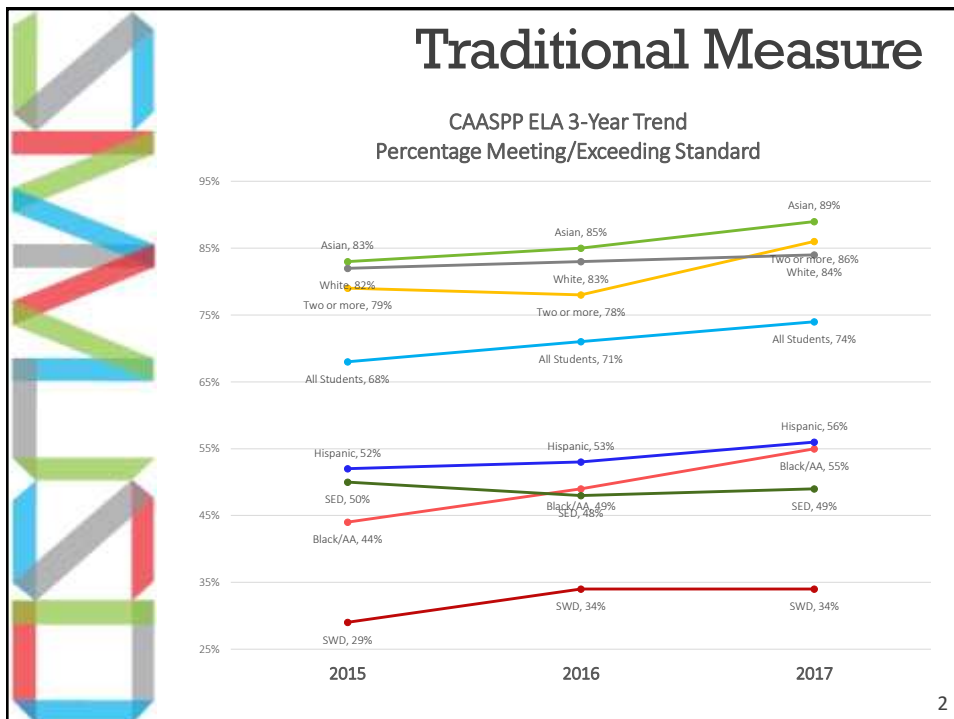


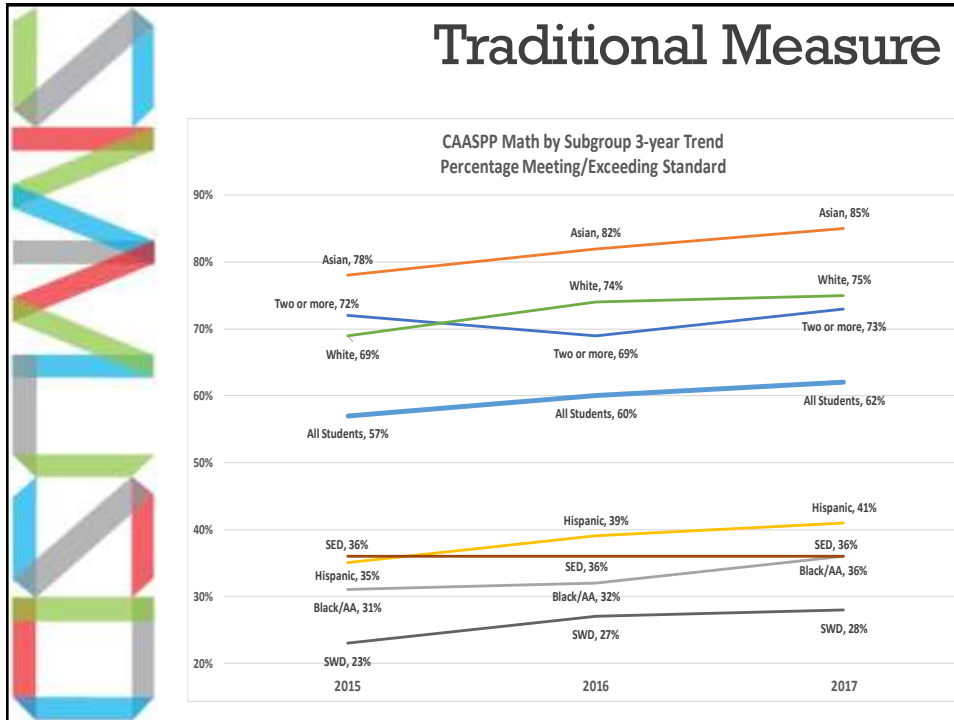
SANTA MONICA-MALIBU UNIFIED SCHOOL DISTRICT

# Student Achievement Lag Data Review (Quarter 1)

Board of Education

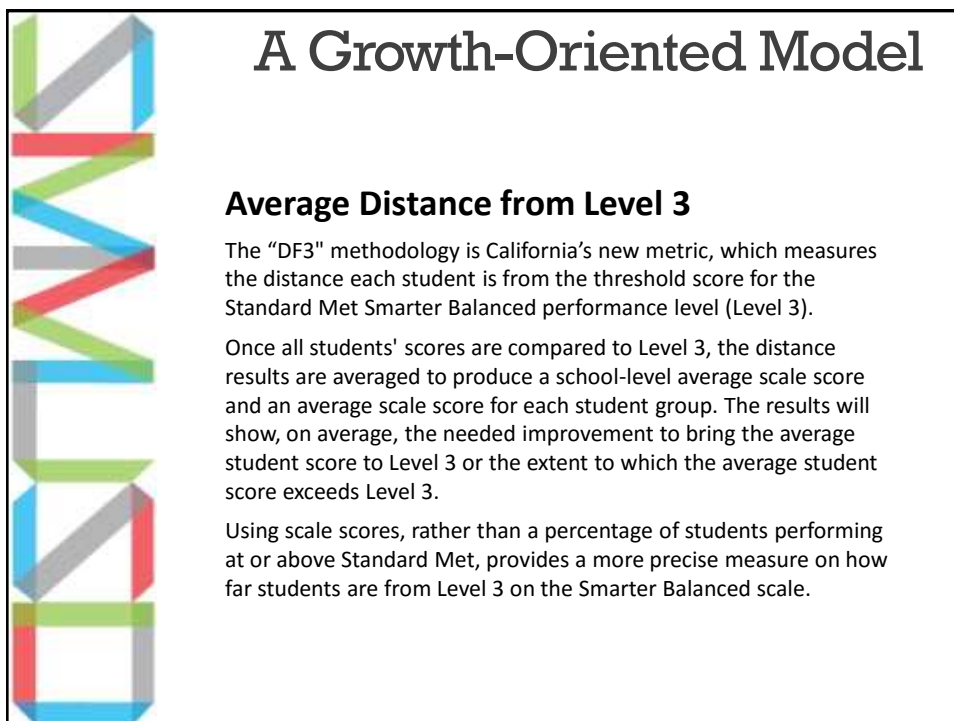
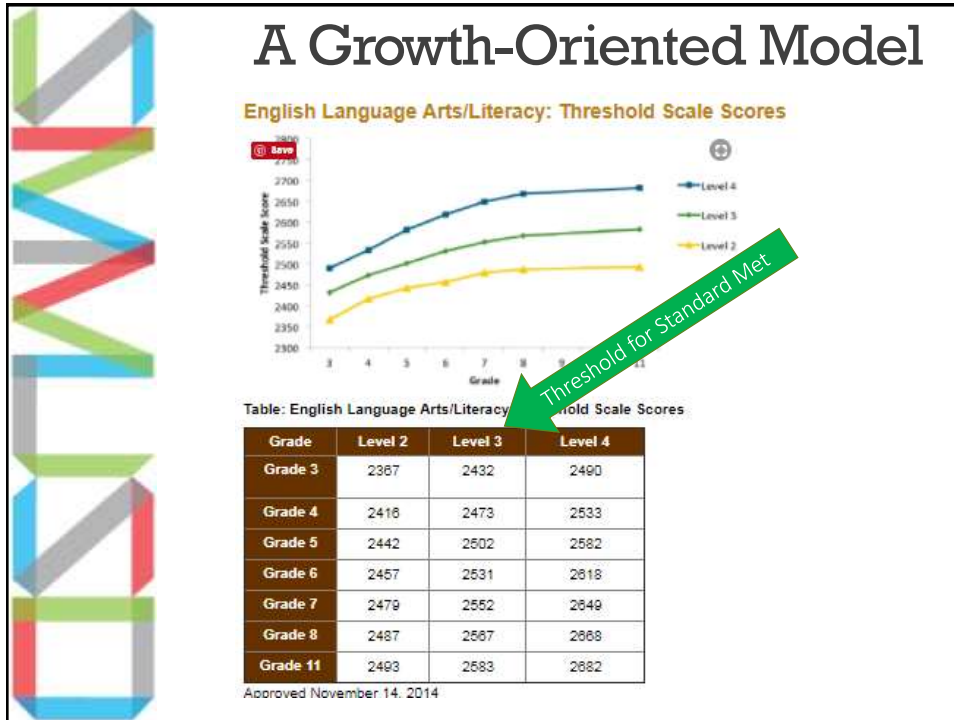
Sept. 13, 2017





## The Dashboard – A New Measure





# A Growth-Oriented Model

**Academic Indicator Five-by-Five Color Tables**  
English Language Arts/Literacy Assessment Five-by-Five Color Table

Level	Declined Significantly By more than 18 points (Change)	Declined by 3 to 18 points (Change)	Maintained Declined by less than 3 points or increased by less than 7 points (Change)	Increased by 7 to less than 20 points (Change)	Increased Significantly by 20 points or more (Change)
<b>Very High</b> 48 or more points above (Status)	Yellow	Green	Blue	Blue	Blue
<b>High</b> 30 points above to less than 48 points above (Status)	Orange	Yellow	Green	Green	Blue
<b>Medium</b> 8 points below to less than 30 points above (Status)	Orange	Orange	Yellow	Green	Green
<b>Low</b> More than 8 points below to 20 points below (Status)	Red	Orange	Yellow	Yellow	Yellow
<b>Very Low</b> More than 20 points below (Status)	Red	Red	Red	Orange	Yellow

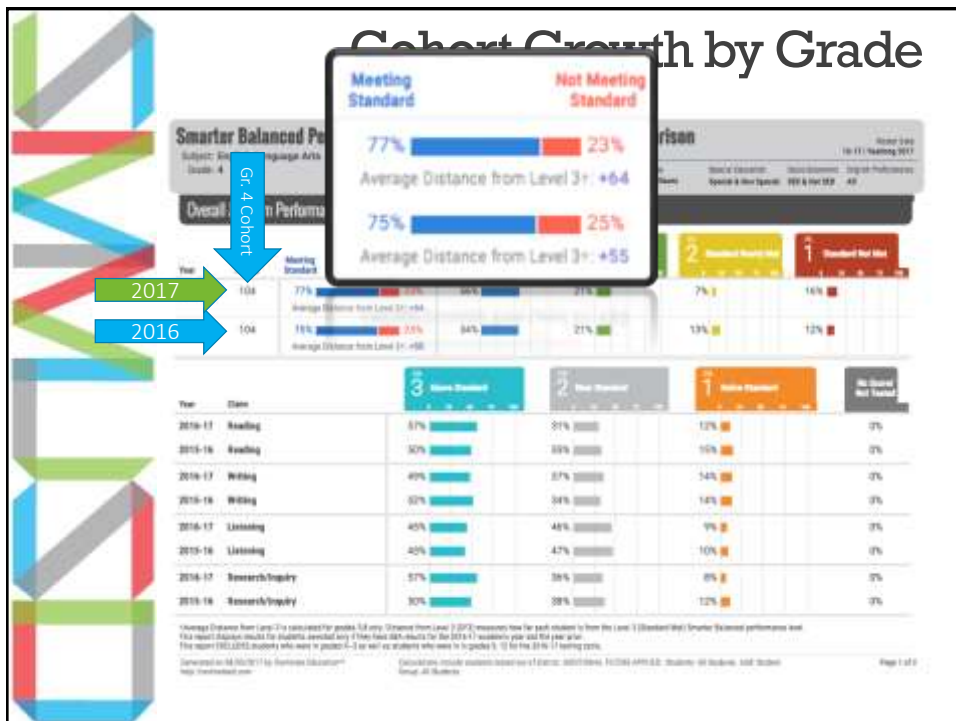
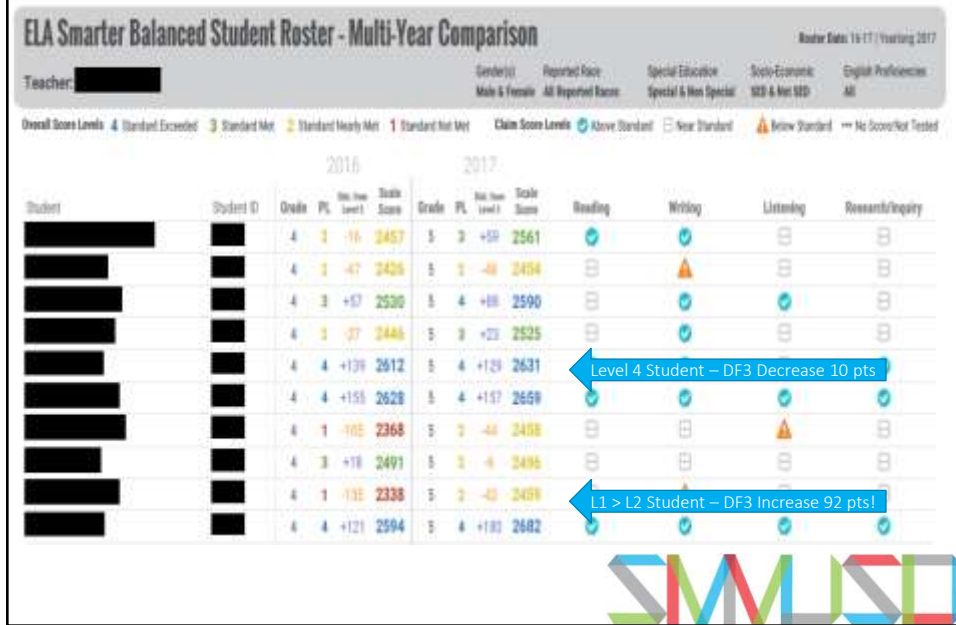
## Dashboard Preview

2017 Projected Dashboard Results ELA						
	2016	2017	Status	Change	DF3	Pie/Color
All Students	47	51	Very High	4	Maintained	Blue
Asian	85	90	Very High	5	Maintained	Blue
Black/AA	-1	0	Medium	1	Maintained	Yellow
Hispanic	2	5	Medium	3	Maintained	Yellow
Two or more	66	79	Very High	13	Increased	Blue
White	74	77	Very High	3	Maintained	Blue
EL/LL	TBD		TBD			
SED	-9	-10	Low	-1	Maintained	Yellow
SWD	-42	-42	Low	0	Maintained	Yellow

2017 Projected Dashboard Results Math						
	2016	2017	Status	Change	DF3	Pie/Color
All Students	22	29	High	7	Increased	Green
Asian	73	84	Very High	11	Increased	Blue
Black/AA	-37	-34	Low	3	Maintained	Yellow
Hispanic	-27	-23	Low	4	Maintained	Yellow
Two or more	46	58	Very High	12	Increased	Blue
White	49	57	Very High	8	Increased	Blue
EL/LL	TBD		TBD			
SED	-38	-36	Low	2	Maintained	Yellow
SWD	-70	-57	Low	13	Increased	Yellow

# Growth by Student



## Cohort Growth by District

### 2017 CAASPP Cohort Growth ELA

	Total in 2-Yr Cohort	2016 AVG DF3	2017 AVG DF3	Change in DF3	Status*	Change*
All Students	3708	51	54	3	Very High	Maintained
Asian	172	93	96	3	Very High	Maintained
Black/AA	203	4	0	-4	Medium	Declined
Hispanic	1140	4	6	2	Medium	Maintained
Two or more	296	71	82	11	Very High	Increased
White	1853	79	81	2	Very High	Maintained
EL	N/A			0	TBD	TBD
SED	994	-6	-5	1	Medium	Maintained
SWD	426	-40	-39	1	Low	Maintained

By definition, the cohort does not include grade 3 or 11, as these students have no prior CAASPP score



## Cohort Growth by District

### 2017 CAASPP Cohort Growth Math

	Total in 2-Yr Cohort	2016 AVG DF3	2017 AVG DF3	Change in DF3	Status*	Change*
All Students	3701	27	27	0	High	Maintained
Asian	171	77	91	14	Very High	Increased
Black/AA	203	-27	-40	-13	Low	Declined Significantly
Hispanic	1136	-20	-26	-6	Low	Declined
Two or more	294	51	56	5	Very High	Increased
White	1852	54	57	3	Very High	Maintained
EL	N/A			0		TBD
SED	991	-29	-37	-8	Low	Declined
SWD	416	-61	-66	-5	Low	Declined

\*Current Dashboard Model

By definition, the cohort does not include grade 3 or 11, as these students have no prior CAASPP score

