



Outreach and Logistics Update

2/8/18

Instructional Services
Governing Board Presentation

Off and Running...

Interest Meetings:

- 60+ families, on average, at Info Sessions and Tours (Standing Room Only)
- Roadshow updates
- Upcoming Parent-Student afternoon meeting to engage older students (design challenge)

Public Relations:

- Mercury News/Campbell Reporter stories
- Postcard/Flyer distribution
- Email blasts
- Website traffic



A Day in the Life of a CSI Student



A Day in the Life of a CSI Student

Mornings:

Foundational & Future Literacies

Morning Meetings and foundational skill work
WIN approach - “What I Need”

Afternoons:

Deeper Learning Experiences

Design Thinking integrated into research, student driven learning, hands-on learning, application of knowledge

Integrated Art, Music, PE

Culture and Community building program elements:

Assemblies, guest speakers, student presentations, sharing feedback, mentoring through buddies, team building

A Day in the Life of a CSI Teacher

(Why did you decide to come to CSI?)

- Co-teaching
- Strong/effective collaboration that improves teacher practice
- Risk-taking
- Opportunities to try something different, student-centered
- Students owning their learning
- Broadening our view of assessment

A Day in the Life of a CSI Administrator

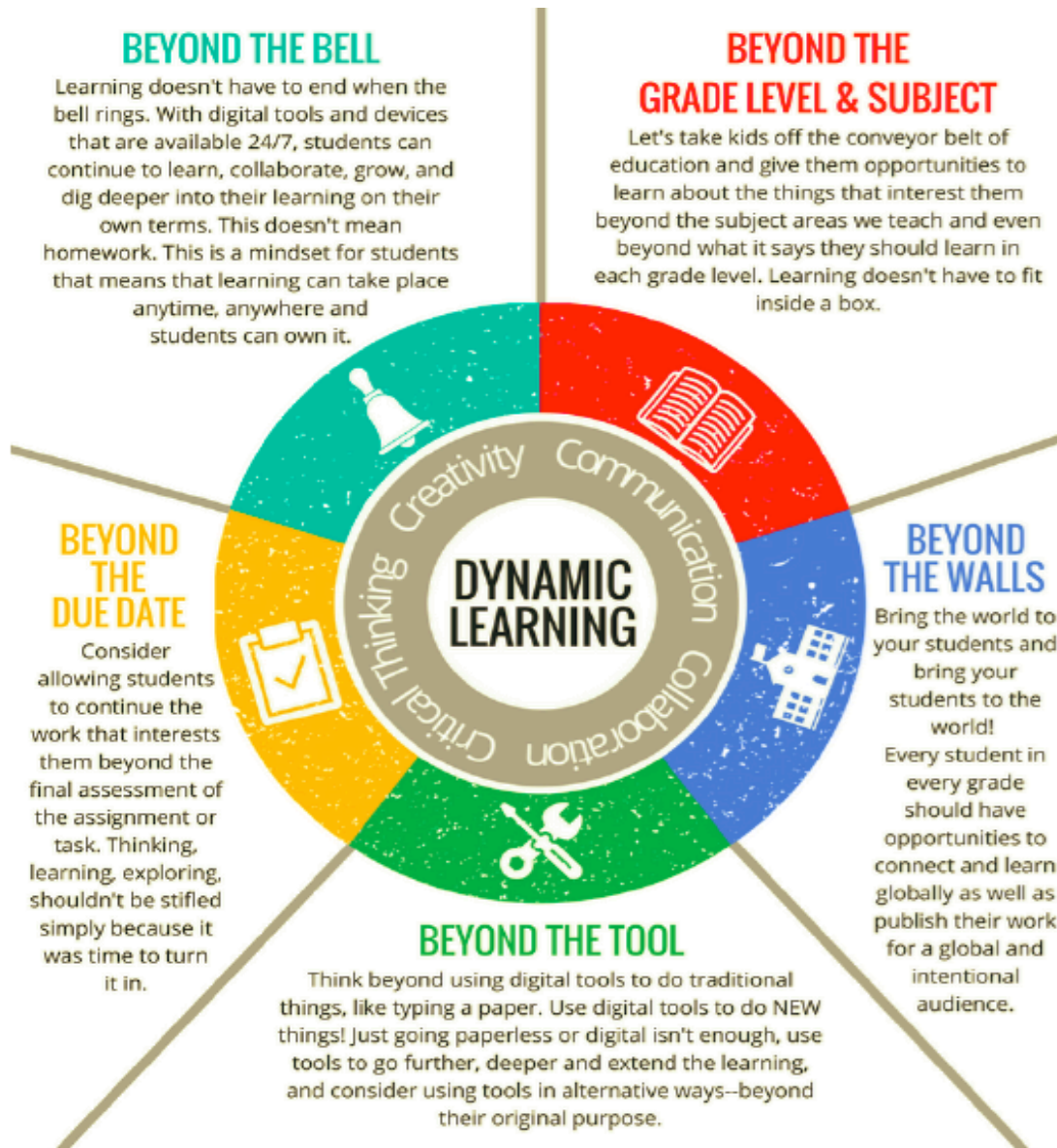
- Establish a culture of learning that empowers our teachers and students - We are ALL learners
- Working with the community to continually gather authentic information/observations about what's working
- Deeply embed and model *Design Thinking* (school-wide themes)
- Build a culture around *Responsive Classroom* practices

Innovation

What will be different?

- Physical spaces will encourage new behaviors and learning practices
- Design thinking mindsets will be modeled and practiced through authentic and relevant learning opportunities
- Community focused
- Collaborative learning culture
- Focus on reflective practice for all stakeholders
- Emphasis on student voice

Dynamic Learning



Logistics

Staffing:

- Working with HR to hire staff
- Looking for unique ways to leverage fine arts

Outreach:

- CSI morning tours continue
- After school parent and student tour
- Parent Meet & Greets when enrollment closes
- Direct mail, E-mail, Media

Construction

- Complete removal of the A House and its 14 classrooms.
- Actively putting in infrastructure
- Finalizing furniture, carpet, and paint details.

Story Room:

- Creating a space with artifacts that showcase our story.

Exciting Challenges Ahead

- Keep asking good questions!
- Awareness of student, staff, and administrative habits
- Tempering parent and community expectations
- Parent education - Parent Bootcamps
- Time for learning - summer PD and support throughout the year
- Staying the course - focus *Design Thinking* and *Responsive Classroom*
- Staff team building