

Santa Clara Unified School District

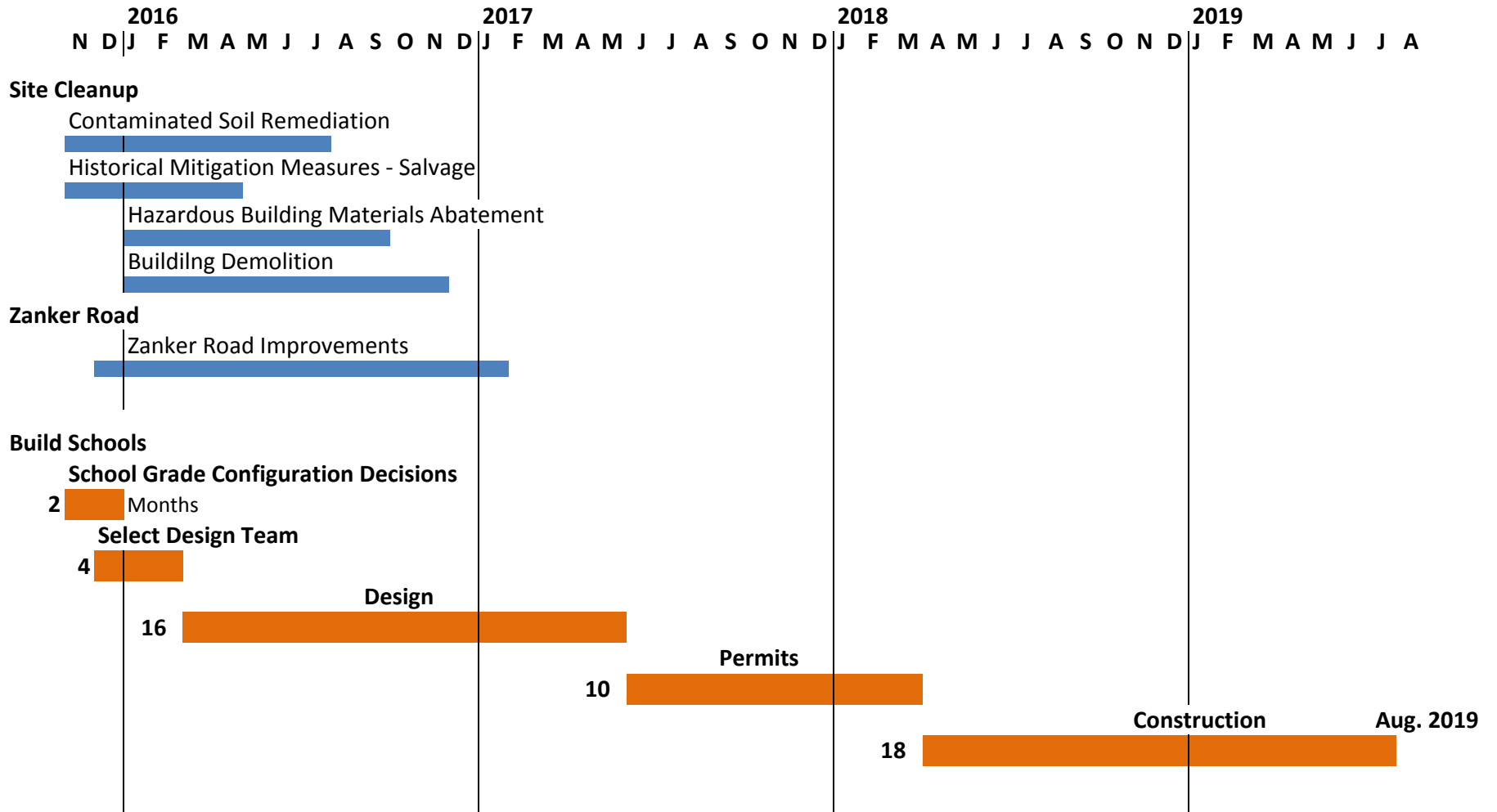
Regular Meeting of the Board of Education

January 14, 2016

B.4 Discuss Options for New Schools Located on the
Agnews Campus



SANTA CLARA UNIFIED SCHOOL DISTRICT



SUMMARY

The proposed project is the acquisition of a portion of the Agnews East Campus by the Santa Clara Unified School District (SCUSD) for the construction of a K-12 school campus. The project site is located on the east side of Zanker Road between Center Road and River Oaks Parkway in North San José. The site is developed with the Agnews Developmental Center, a former State hospital that was permanently shut down in July 2011. The State of California is currently selling the 81-acre Agnews East property and the SCUSD (the Lead Agency) is considering the purchase of up to 59 acres for the construction of a K-12 school campus.

The capacity of the proposed school campus would be up to 2,800 students, including 1,800 high school students and 1,000 K-8 students. The school would be operated by approximately 220 staff members, including 150 for the high school portion and 70 for the K-8 school portion. The campus would include classrooms, libraries, multipurpose/cafeteria and kitchen uses, administration buildings, gymnasiums (with a pool), and a performing arts building. The campus would also include recreational facilities, parking lots, paved circulation areas, and landscaping.

Playfields and recreational facilities would include a football/track stadium, soccer, baseball, and softball fields, paved tennis and basketball courts, and play areas serving grades K-8. It is anticipated that artificial turf would be used for all playfields. The proposed football/track stadium would have a maximum capacity of 3,000 spectators and would include stadium lighting, a public address (PA) system, restroom and concession facilities, bleachers with a press-box, and a scoreboard.

Vehicular access to the school campus would be provided by Zanker Road. The primary driveway would be provided at the existing signalized intersection of Zanker Road, De Soto Road (on-site), and Alicante Drive (west of Zanker Road), with two additional driveways to the north and south of the main entrance. Pedestrian and bicycle access for school users would be provided in the southeastern corner of the site.

Development of the K-12 school campus would require the demolition of all existing structures, including a potential historic district. The majority of existing trees would also be removed, although mature trees would be preserved to the extent feasible and replacement trees would be provided following construction. In addition, the proposed project includes the remediation of soil contamination and the capping of soils containing naturally-occurring asbestos.

Summary of Impacts and Mitigation Measures

The following table summarizes the significant environmental impacts identified and discussed within the text of this Environmental Impact Report (EIR) and identifies mitigation measures to avoid or reduce those impacts. For a complete description of impacts and mitigation measures, the reader should refer to the text of this EIR. Alternatives to the proposed project and areas of known controversy are also summarized at the end of the table. A complete description of the project, its impacts, and proposed mitigation measures can be found in the text of the EIR, following this summary.

SECTION 1.0 INTRODUCTION AND BACKGROUND

1.1 INTRODUCTION AND BACKGROUND

The proposed project is the acquisition of a portion of the Agnews East Campus by the Santa Clara Unified School District (hereafter the District or SCUSD) from the State of California and the construction of a K-12 school campus. The Agnews East property is located on the east side of Zanker Road between Center Road and River Oaks Parkway in North San José. The property is developed with an existing state facility called the Agnews Developmental Center.

The Agnews Developmental Center was established by an act of the California Legislature in 1885 and was founded as the “California Hospital for the Chronically Insane.” The Agnews Developmental Center was operated by the California Department of Developmental Services from 1888 to 2009. Programs for the mentally ill were discontinued in 1972, and the facility had been utilized exclusively for the care and treatment of persons with developmental disabilities since that time.

The Agnews Developmental Center originally had two campuses in Santa Clara County. The first facility (referred to as the “Agnews West Campus”) was located in the City of Santa Clara. The second facility (“Agnews East Campus”) was constructed in North San José, approximately 1.5 miles northeast of the original campus. The West Campus was closed in 1996. The 2003-04 Governor’s Budget directed the Department of Developmental Services to develop a plan to close the remaining campus of the Agnews Developmental Center by July 2005. All patients from the Agnews East facility had been relocated by April 2009, and the campus has been vacated as of July 2011.¹ Currently, the California Department of General Services (DGS) is selling the Agnews East property. The Agnews East campus consists of approximately 49 buildings and structures, constructed between 1931 and 1999.

The SCUSD (the Lead Agency) is considering the purchase of up to 59 acres of the approximately 81-acre Agnews East property for the construction of a K-12 school campus. The westernmost portion of the Agnews East Campus proposed for acquisition is considered the “project site” for the purposes of this EIR. The remaining portion of the campus could be sold to another user(s) and is not part of the project site.

The District’s service area includes land in North San José, the City of Santa Clara, and parts of Sunnyvale (refer to Figure 1). The SCUSD is comprised of 16 elementary schools, three middle schools, one K-8 school, two high schools, one 6-12 alternative school, and two continuation high schools. Currently, the SCUSD has only one school located in San José: George Mayne Elementary School in Alviso. During the 2010-2011 school year, the SCUSD had a total of 15,383 students enrolled in grades K-12.²

1.2 PURPOSE OF THE EIR

This EIR evaluates the potential environmental impacts that might reasonably be anticipated to result from the purchase of the property, demolition of existing on-site structures, and construction of a K-

¹ California Department of Developmental Services. “Agnews Developmental Center.” August 2011. Accessed September 20, 2011. <<http://www.dds.ca.gov/Agnews/Index.cfm>>

² California Department of Education, Educational Demographics Unit. “Enrollment by Grade.” 2011. Accessed June 15, 2011. <<http://dq.cde.ca.gov/dataquest/>>

SECTION 2.0 PROJECT DESCRIPTION & OBJECTIVES

2.1 PROJECT COMPONENTS

The proposed project is the acquisition of the westernmost 59 acres of the Agnews East Campus by the Santa Clara Unified School District (SCUSD or District) for the construction of a **K-12 school campus**. The **K-12 campus** would include school buildings, parking lots, paved circulation areas, playfields, and landscaping. The components of the project are described below.

2.1.1 Construction of a **K-12 School Campus**

The project proposes to construct a **K-12 school campus** with playfields on the 59-acre property. **The capacity of the school campus would be up to 2,800 students, including 1,800 high school students and 1,000 K-8 students.** For a school campus of this size, it is anticipated that there would be approximately 220 staff members, including 150 for the high school portion and 70 for the K-8 school portion.

A conceptual site plan has been developed for the proposed **K-12 school campus**, shown on Figure 4. The total number of classrooms, buildings, and parking spaces provided on the site will ultimately depend on the final student capacity, in accordance with California Department of Education (CDE) school programming guidelines and standards set forth in Title 5 of the CCR. **Therefore, the exact site layout, building footprints, circulation system, and other project elements will be determined during the final design phase.**

2.1.1.1 *School Buildings*

As shown on Figure 4, the proposed school campus would include classrooms, libraries, multipurpose/cafeteria and kitchen uses, administration buildings, gymnasiums (with a pool), and a performing arts building. **Facilities for grades K-8 would be located separate from, but adjacent to, the high school facilities, with shared use of some buildings and playfields.** The total square footage of the school buildings is estimated to be approximately **382,000 square feet.**

According to CDE guidelines and the District's program requirements, a 1,000-student K-8 school includes 36 classrooms, administration space, a media center, a tech lab, a multipurpose space, locker rooms, and a staff workroom. The program requirements for a 1,800-student high school include 70 general education classrooms, 15 science laboratories/classrooms, two lecture rooms, eight art labs, and five special education classrooms, as well as administration space, media center, cafeteria/kitchen, performing arts, gyms, and lockers.

It is currently anticipated that the buildings for grades K-5 would be limited to one story, while the buildings for grades 6-8 would be two stories and the high school buildings would be three stories (a maximum height of 50 feet). The performing arts building could be up to 120 feet tall if it includes a full fly tower.⁶ The performing arts building may include a basement for access under the stage area. The basement structure and the proposed pool would extend to a depth of less than 30 feet below ground surface. Depending on the size, height, and use of the school buildings, the construction type would be concrete, masonry, steel frame, wood frame, or a combination.

⁶ A fly system is a system of ropes, pulleys, and other devices within a theatre that allows components such as curtains and scenery to be moved vertically on and off stage.



CONCEPTUAL SITE PLAN

FIGURE 4

MEASURE H

COUNTY COUNSEL'S IMPARTIAL ANALYSIS OF MEASURE H

Upon approval of 55% of the votes cast by voters in an election and subject to specified accountability measures, California law permits school districts to issue bonds, secured by the levy of ad valorem taxes on property within a district, for the purpose of construction, reconstruction, rehabilitation, or replacement of school facilities, including the furnishing and equipping of school facilities, or the acquisition or lease of real property for school facilities.

The Board of Education (Board) of the Santa Clara Unified School District (District) proposes issuing bonds in the amount of \$419,000,000. As identified in the measure, bond proceeds would be used for purposes including, but not limited to: (1) repairing roofs, plumbing and wiring; (2) removing asbestos, lead and other hazardous materials; (3) upgrading classrooms and career training facilities to support 21st century learning and prepare students for college and careers; and (4) acquiring, renovating, constructing and equipping classrooms and facilities to relieve overcrowding and attract teachers. A detailed list of projects and allowed expenditures is included within the full text of the measure. The District's resolution authorizing the sale and issuance of bonds does not include information about any other District debt obligations that may exist.

The California Constitution provides that proceeds of school district bond measures cannot be used for teacher and administrator salaries and other school operating expenses, and requires independent annual performance and financial audits. State law requires the establishment of an independent citizens' oversight committee for ensuring that bond proceeds are expended only for the school facilities on the bond project list included in Measure H.

The District's best estimate of the tax rate that would be required to fund the bond issue during the first fiscal year after the sale of the first series of bonds (fiscal year 2015-2016) is \$47.40 per \$100,000 of assessed value. The best estimate of the tax rate required to fund the bond issue during the first fiscal year after the sale after the last series of bonds (fiscal year 2021-2022) is \$47.60 per \$100,000 of assessed value. The best estimate of the highest tax rate required to fund the bond issues is \$47.60 per \$100,000 of assessed value.

Measure H was placed on the ballot by the Board.

A "yes" vote is a vote to authorize the issuance and sale of the bonds in the amount of up to \$419,000,000 to be secured by the levy of ad valorem taxes on property located within the District.

A "no" vote is a vote to not authorize the issuance and sale of the bonds in the amount of up to \$419,000,000 to be secured by the levy of ad valorem taxes on property located within the District.

Orry P. Korb
County Counsel

By: /s/ Susan Swain
Lead Deputy County Counsel

COMPLETE TEXT OF MEASURE H

SANTA CLARA UNIFIED SCHOOL DISTRICT BOND PROPOSITION FULL BALLOT TEXT

By approval of this proposition by at least 55% of the registered voters voting thereon, the Santa Clara Unified School District shall be authorized to issue and sell bonds of up to \$419 million in aggregate principal amount to provide financing for the specific school facilities projects listed below in the Bond Project List, subject to all of the accountability safeguards specified herein.

ACCOUNTABILITY MEASURES

The provisions in this section are included in this proposition in order that the voters and taxpayers of the District may be assured that their money will be spent to address specific facilities needs of the District, all in compliance with the requirements of Article XIII A, section 1(b)(3) of the State Constitution, and the Strict Accountability in Local School Construction Bonds Act of 2000 (codified at section 15264 *et seq.* of the California Education Code).

Evaluation of Needs. The Board of Education has evaluated the facilities needs of the District, and determined which projects to finance from a local bond measure at this time. The Board of Education hereby certifies that it has evaluated safety, class size reduction and information technology needs in developing the Bond Project List.

Independent Citizens' Oversight Committee. The Board of Education shall establish an independent Citizens' Oversight Committee to ensure bond proceeds are expended only for the school facilities projects listed in the Bond Project List. The committee shall be established within 60 days of the date when the Board of Education enters the results of the election in its minutes.

Annual Performance Audit. The Board of Education shall conduct or cause to be conducted an annual, independent performance audit to ensure that the bond proceeds have been expended only on the school facilities projects described in the Bond Project List.

Annual Financial Audit. The Board of Education shall conduct or cause to be conducted an annual, independent financial audit of the bond proceeds until all of those proceeds have been spent for the school facilities projects described in the Bond Project List.

Annual Report to Board. Upon approval of this measure and the sale of any bonds approved, the Board of Education shall take actions necessary to establish an account in which proceeds of the sale of bonds will be deposited. As long as any proceeds of the bonds remain unexpended, the Superintendent shall cause a report to be filed with the Board of Education no later than January 1 of each year, commencing on the first January 1 after the first bonds have been sold, stating (1) the amount of bond proceeds received and expended in that year, and (2) the status of any project funded or to be funded from bond proceeds. The report may relate to the calendar year, fiscal year, or other appropriate annual period as the Superintendent shall determine, and may be incorporated into the annual budget, audit, or other appropriate routine report to the Board.

COMPLETE TEXT OF MEASURE H-Continued

BOND PROJECT LIST

This Bond Project List, which is an integral part of this proposition, describes the specific projects the District proposes to finance with proceeds of the bonds.

Proceeds from the sale of bonds authorized by this measure shall be used only for the construction, reconstruction, rehabilitation, or replacement of school facilities on the Bond Project List, including the furnishing and equipping of said school facilities, or the acquisition or lease of real property for said school facilities, and not for any other purpose, including teacher and administrator salaries and other school operating expenses.

In order to meet all identified facilities needs, the District intends to complete projects using a combination of funding sources. These sources may include joint-use funds, development impact fees, state funds, and other available funds. The District will pursue state matching funds if and when they become available, and if received, they will be used for and mainly applied to projects on the Bond Project List or other high priority capital outlay expenditures as permitted in Education Code section 17070.63(c). No project is dependent on the receipt of funds from other sources, including state funding.

Specific projects which may be funded by the bond measure include without limitation, Critical Facility Needs, Classroom and School Site Expansion, High Priority Modernization Projects, and New Schools as described below.

Critical Facility Needs Projects:

Goal and Purpose: Renovate or replace buildings and make site improvements necessary to enhance life safety and security; protect and sustain capital investments; enable increasingly sophisticated technology infrastructure; optimize environmental conditions for teaching and learning; and conserve natural resources, as follows:

- Replace roofs and roof drainage systems. Replace water damaged structure and finishes.
- Replace covered walkways where re-roofing and seismic strengthening are not economically feasible.
- Replace or modify heating, air conditioning and ventilation systems with new energy efficient systems and features.
- Replace inefficient electrical and lighting systems.
- Replace deteriorated water, storm drainage and sanitary sewer systems.
- Replace outdated and inefficient boiler systems.
- Replace deteriorated asphalt play surfaces, parking lots and driveways.
- Upgrade HVAC, lighting, energy and utility management systems District-wide to increase efficiency and reduce utility costs.
- Complete projects to leverage resources for energy efficiency and environmental sustainability available from the Proposition 39 Clean Energy Jobs Act 2013, CHPS, LEED, Savings-by-Design or other similar program.
- Provide air conditioning to elementary school classrooms.

COMPLETE TEXT OF MEASURE H-Continued

- Perform hazardous material removal including asbestos, lead or PCB contamination where encountered. Remove underground storage tanks if identified.
- Improve technology systems necessary for student learning, efficient operations, security, increased capacity and processing speed.
- Construct site improvements to address improper drainage, erosion control, proper storm water management systems and procedures, and efficient landscape water usage.
- Construct improvements to enhance student, staff and public safety.
- Improve facilities for bus and parent drop-off and pick-up of students.
- Improve school, building and room identification systems including signage and wayfinding for security and first responder access.
- Improve fire-life-safety systems including fire alarms, fire suppression systems, clock-bell-intercom systems, telephone systems, doors, hardware and access control systems, windows and window coverings, and intrusion alarms.
- Expand or improve video security and surveillance systems where needed.
- Correct building and site deficiencies related to the Americans with Disabilities Act and Access Compliance requirements of the Division of the State Architect, including but not limited to path-of-travel, restrooms, and parking.
- Replace or improve outdoor athletic facilities including: natural or synthetic turf, irrigation and drainage systems; replacement bleachers, press box, restroom, concession, lighting or sound systems; and improvements for accessibility.
- Replace elementary school play structures and fall protection systems to meet current safety and accessibility requirements.
- Replace building window systems for energy efficiency, sound insulation and daylight control.
- Replace deteriorated interior and exterior finishes including paint, floor covering, wall surfaces and ceilings.
- Upgrade landscape systems to enhance water efficiency and improve the appearance of District Facilities.
- Provide shade for elementary school outdoor eating areas.

Classroom and School Site Expansion Projects:

Goal and Purpose: Relieve overcrowding and provide proper school facilities for the District's educational program, as follows:

- Modernize and expand existing or closed schools, including classrooms, school support facilities and site improvements, to relieve overcrowding and reduce class sizes.
- Restore existing buildings by performing modernization including voluntary seismic strengthening with the intent to re-use the buildings as DSA certified school buildings or related uses.
- Construct new buildings and site improvements where necessary on currently closed school sites.
- Provide permanent facilities for the District Special Education Programs.

COMPLETE TEXT OF MEASURE H-Continued

- Construct/replace district wide support facilities necessary for the operation of the district, including, but not limited to: Nutrition, Warehouse, Maintenance, Grounds, Transportation and Technology. These projects could be built as standalone projects, or in conjunction with other approved projects.

High Priority Modernization Projects:

Goal and Purpose: Modernize the major buildings on active District school sites that were not previously modernized, as follows:

- Modernize the Main Gymnasium and Shower/Locker building at Buchser Middle School.
- Modernize the Main Gymnasium, Auxiliary Gymnasium and Shower/Locker Building at Peterson Middle School.
- Renovate or replace swimming pool at Peterson Middle School.
- Modernize the Shower/Locker Building at Cabrillo Middle School.

New Schools:

Goal and Purpose: Complete schools on the recently acquired Agnews site and elsewhere to accommodate the projected District-wide enrollment growth, as follows:

- Build new schools to accommodate enrollment growth and relieve overcrowding.

Listed projects, repairs, improvements, rehabilitation projects and upgrades will be completed only as feasible, and the list of projects does not imply a particular prioritization among such improvements, which remains the province of the Board of Education by subsequent action. Listed projects may be completed at any and all school sites where such project is determined necessary. Where economically feasible, buildings, fixtures and equipment may be replaced rather than modernized, renovated or repaired. Each project is assumed to include its share of costs of the election and bond issuance, architectural, engineering, and similar planning costs, construction management, bond project staff, staff training expenses associated with new bond-funded equipment and systems, and a customary contingency for unforeseen design and construction costs. In addition to the projects listed above, the Bond Project List also includes the acquisition of land, instructional, maintenance and operational furniture and equipment, payment of the costs of preparation of all facilities planning and project implementation studies, feasibility and assessment reviews, master planning, environmental studies, and temporary housing for dislocated programs or activities caused or necessitated by construction projects.

The final cost of each project will be determined as plans are finalized and projects are completed. Based on the final costs of each project, certain of the projects described above may be delayed or may not be completed. Necessary site preparation/grading/restoration may occur in connection with new construction, modernization, renovation or remodeling, including ingress and egress, removing, replacing or installing irrigation, utility lines, trees and landscaping, relocating fire access roads, and acquiring any necessary easements, leases, licenses, or rights of way to the property.

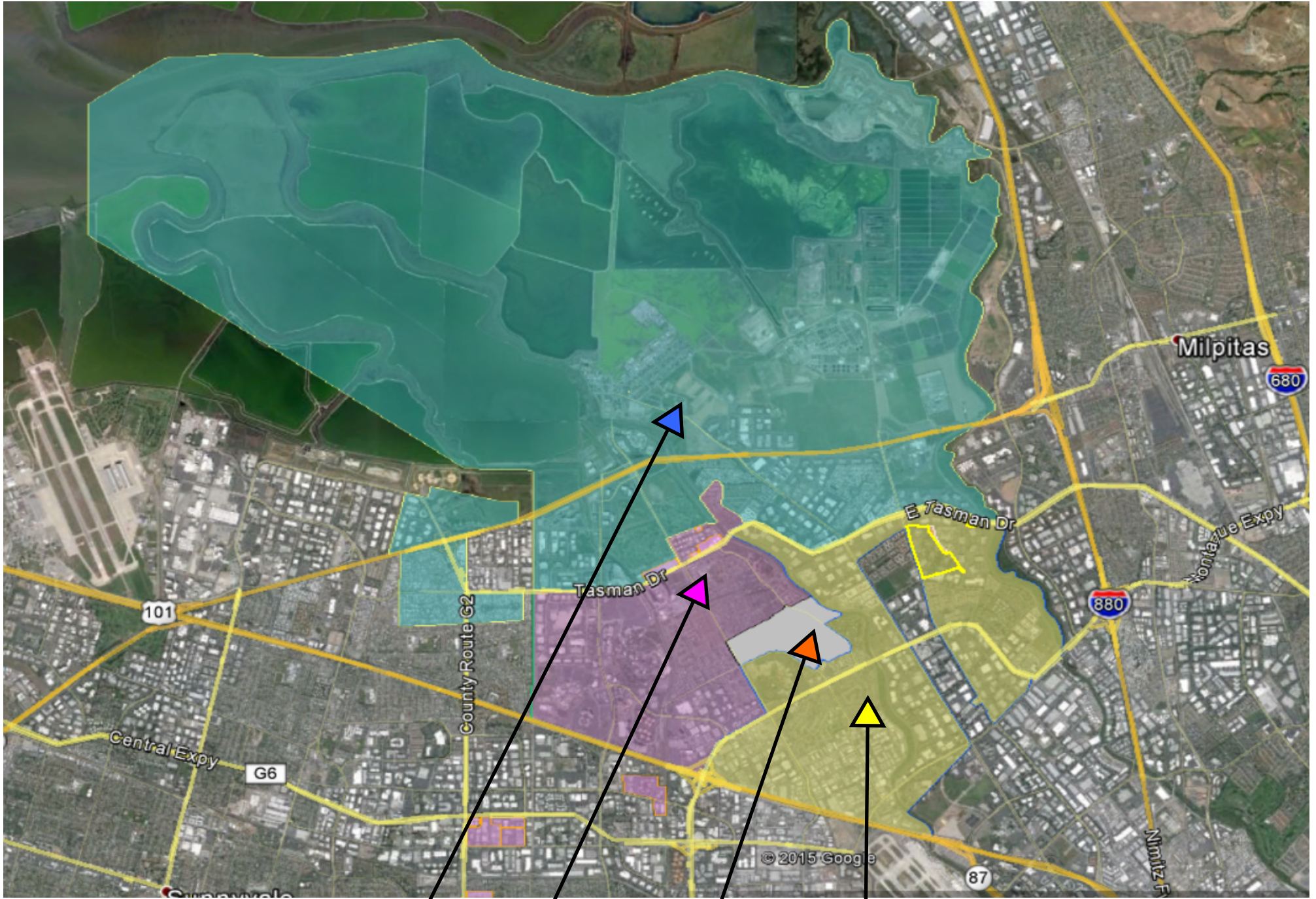
COMPLETE TEXT OF MEASURE H-Continued

ADDITIONAL SPECIFICATIONS

No Administrator Salaries. Proceeds from the sale of Bonds authorized by this proposition shall be used only for the construction, reconstruction, rehabilitation, or replacement of school facilities on the Bond Project List, including the furnishing and equipping of said school facilities, or the acquisition or lease of real property for said school facilities, and not for any other purpose, including teacher and administrator salaries and other school operating expenses.

Single Purpose. All of the purposes enumerated in this proposition shall be united and voted upon as one single proposition, pursuant to section 15100 of the California Education Code, and all the enumerated purposes shall constitute the specific single purpose of the bonds and proceeds of the bonds shall be spent only for such purpose.

Other Terms of the Bonds. When sold, the bonds shall bear interest at an annual rate not exceeding the statutory maximum. The bonds may be issued and sold in several series, and in accordance with a plan of finance determined by the Board of Education pursuant to requirements of law.



Mayne

Hughes

Don Callejon

Montague



Peterson

Cabrillo

Buchser

Don Callejon



**SANTA CLARA UNIFIED SCHOOL DISTRICT
ENROLLMENT/STAFFING REPORT Combined**

A	B	C	D	E	F	G	H	I	J	K	L	M	N	O	P	Q	R	S	T	U	V	W
SCHOOL	TK	K	1	2	3	4	5	6	7	8	9	10	11	12	Sub-Total	TOTAL	Proj.	Dif	TK - 3	TK-3 / TSR	4 - 5	4 - 5 / TSR
BOWERS	0	46	50	55	54	59	47								311	342	0	342	9	22.78	4	26.50
Spec Day	22	4	3	2	0	0	0								31							
BRACHER *	0	52	53	54	58	55	54								326	357	0	357	9	24.11	4	27.25
Spec Day	0	3	6	4	5	5	8								31							
BRALY *	28	67	61	67	64	55	66								408	436	0	436	12	23.92	4	30.25
Spec Day	0	5	2	8	3	6	4								28							
BRIARWOOD	22	60	47	55	57	43	49								333	353	0	353	10	24.10	4	23.00
Spec Day	0	0	2	2	1	8	7								20							
CALLEJON	0	104	92	110	100	89	95								590	590	0	590	16	25.38	7	26.29
Spec Day	0	0	0	0	0	0	0								0							
HAMAN	29	63	63	67	58	59	60								378	407	0	407	10	28.00	4	29.75
HOHearing+SDC	8	4	5	4	2	6	0								29							
HUGHES *	13	88	58	84	63	95	62								463	463	0	463	12	25.50	5	31.40
Spec Day	0	0	0	0	0	0	0								0							
LAURELWOOD *	0	142	102	110	108	103	114								679	689	0	689	18	25.67	7	31.00
Spec Day	0	5	5	0	0	0	0								10							
MAYNE *	0	91	84	87	86	93	91								532	532	0	532	14	24.86	6	30.67
Spec Day	0	0	0	0	0	0	0								0							
MILLIKIN	0	88	90	90	89	99	66								522	522	0	522	13	27.46	4	41.25
Spec Day																						
MONTAGUE *	30	71	54	53	46	50	46								350	367	0	367	10	25.40	4	24.00
Spec Day	0	0	2	4	3	3	5								17							
POMEROY	0	89	90	86	78	77	85								505	505	0	505	13	26.38	6	27.00
Spec Day	0	0	0	0	0	0	0								0							
PONDEROSA *	0	99	74	92	92	90	96								543	572	0	572	14	25.50	6	31.00
Spec Day	0	5	3	5	7	4	5								29							
SCOTT LANE	29	76	64	60	79	82	72								462	462	0	462	13	23.69	6	25.67
Spec Day	0	0	0	0	0	0	0								0							
SUTTER *	29	68	74	81	73	52	92								469	492	0	492	13	25.00	5	28.80
Spec Day	0	4	2	7	5	3	2								23							
WASHINGTON	0	54	49	64	61	63	54								345	345	0	345	9	25.33	4	29.25
Spec Day	0	0	0	0	0	0	0								0							
WESTWOOD	0	62	76	65	75	66	62								406	469		469	12	23.17	5	25.60
Spec Day	63	0	0	0	0	0	0								63							
SUBTOTAL K-5															7903	7903	0	0	207.00	24.85	85.00	29.49
BUCHSER *								301	375	329					1005	1047	0	1047				
Spec Day								17	16	9					42							
CABRILLO *								273	307	274					854	893	0	893				
Spec Day								13	11	15					39							
CALLEJON *								137	129	124					390	390	0	390				
Spec Day								0	0	0					0							
PETERSON *								331	278	273					882	897	0	897				
Spec Day								5	5	5					15							
OPPORTUNITY								0	3	7					10	10	0	10				
COMMUNITY SCHOOL								0	2	3	1	0	1	1	8	8	0	8				
SUBTOTAL 6-8															3245	3245	0	3255				
SANTA CLARA								517	521	440	433				1911	1963	0	0				
Spec Day								0	0	0	0				0							
Middle College								0	6	23	23				52							
WILCOX								512	496	461	438				1907	2000	0	1982				
Spec Day								17	14	20	24				75							
Middle College								0	0	11	7				18							
NEW VALLEY								0	3	55	92				150	150	0	150				
Spec Day								0	0	0	0				0							
GATEWAY								13	9	5	0				27	27	0	27				
Spec Day								0	0	0	0				0							
COMMUNITY SCHOOL								0	0	0	0				0	0	0	0				
SUBTOTAL 9-12															4140	4140	0	4140				
SUBTOTAL K-12															15288	15288	0	15288				
WILSON H.S.															0	0	2	7				
IND. STUDY/HOME		0	0	0	0	0	0	0	0	0	0	0	0	0	9		0					
TOTALS	273	1350	1211	1316	1267	1265	1242	1077	1126	1039	1063	1062	1043	1132	15445	15445		15445				

12

Agnews Elementary School Capacity

Scenario 1

Student-Teacher Ratio/ Class Size

TK-3	24
5-6	24

	TK	K	1	2	3	4	5	Total
Classrooms	1	3	3	3	3	3	3	19
Students	24	72	72	72	72	72	72	456

Middle School Students North of 101
School Attendance

Attendance Area	Attending:	Grades			Total
		6	7	8	
Callejon	Buchser	2	1	0	3
Callejon	Callejon	58	44	30	132
Callejon	Peterson	9	5	3	17
Callejon	Cabrillo	0	6	11	17
		69	56	44	169
Hughes	Buchser	50	54	56	160
Hughes	Callejon	14	18	23	55
Hughes	Peterson	6	7	8	21
Hughes	Cabrillo	1	4	8	13
		71	83	95	249
Mayne	Buchser	1	5	0	6
Mayne	Callejon	64	65	70	199
Mayne	Peterson	31	29	33	93
Mayne	Cabrillo	0	2	4	6
		96	101	107	304
Montague	Buchser	52	47	51	150
Montague	Callejon	0	0	2	2
Montague	Peterson	1	1	1	3
Montague	Cabrillo	0	2	7	9
		53	50	61	164
		289	290	307	886

Attending:	Attendance Area	Grades			Total
		6	7	8	
Buchser	Callejon	2	1	0	3
Buchser	Hughes	50	54	56	160
Buchser	Mayne	1	5	0	6
Buchser	Montague	52	47	51	150
		105	107	107	319
Cabrillo	Callejon	0	6	11	17
Cabrillo	Hughes	1	4	8	13
Cabrillo	Mayne	0	2	4	6
Cabrillo	Montague	0	2	7	9
		1	14	30	45
Callejon	Callejon	58	44	30	132
Callejon	Hughes	14	18	23	55
Callejon	Mayne	64	65	70	199
Callejon	Montague	0	0	2	2
		136	127	125	388
Peterson	Callejon	9	5	3	17
Peterson	Hughes	6	7	8	21
Peterson	Mayne	31	29	33	93
Peterson	Montague	1	1	1	3
		47	42	45	134
Total		289	290	307	886

High School Students North of 101
School Attendance

Attending:	Area	Grades				Total
		9	10	11	12	
Wilcox	Callejon	3	4	4	3	14
Wilcox	Hughes	3	10	8	8	29
Wilcox	Mayne	118	94	86	89	387
Wilcox	Montague	2	3	3	5	13
		126	111	101	105	443
Santa Clara	Callejon	23	26	13	17	79
Santa Clara	Hughes	63	71	62	54	250
Santa Clara	Mayne	4	4	5	3	16
Santa Clara	Montague	49	36	50	35	170
		139	137	130	109	515
New Valley	Callejon	0	1	1	1	3
New Valley	Hughes	0	0	3	6	9
New Valley	Mayne	0	1	5	15	21
New Valley	Montague	0	0	1	10	11
		0	2	10	32	44
	Total	265	250	241	246	1002

Attendance Area	Attending :	Grades				Total
		9	10	11	12	
Callejon	Santa Clara	23	26	13	17	79
Callejon	Wilcox	3	4	4	3	14
Callejon	New Valley	0	1	1	1	3
		26	31	18	21	96
Hughes	Santa Clara	63	71	62	54	250
Hughes	Wilcox	3	10	8	8	29
Hughes	New Valley	0	0	3	6	9
		66	81	73	68	288
Mayne	Santa Clara	4	4	5	3	16
Mayne	Wilcox	118	94	86	89	387
Mayne	New Valley	0	1	5	15	21
		122	99	96	107	424
Montague	Santa Clara	49	36	50	35	170
Montague	Wilcox	2	3	3	5	13
Montague	New Valley	0	0	1	10	11
		51	39	54	50	194
	Total	265	250	241	246	1002

Scenario 1 Don Callejon remains K-8 for Rivermark attendance area only

Attendance Areas	Grades														Totals	
	TK	K	1	2	3	4	5	6	7	8	9	10	11	12		
Agnews (1)	24	72	72	72	72	72	72								456	
Hughes (2), (4)								71	83	95					249	
Mayne								96	101	107					304	
Montague								53	50	61					164	
Don Callejon								0	0	0					0	
Santa Clara											139	137	130	109	515	
Wilcox											126	111	101	105	443	
	24	72	72	72	72	72	72	72	220	234	263	265	248	231	214	2,131

Changes in Neighboring Schools:

Hughes	-7	-24	-24	-24	-24	-24	-24	-24								-151
Mayne	0	-24	-24	-24	-24	-24	-24	-24								-144
Montague	-17	-24	-24	-24	-24	-24	-24	-24								-161
Don Callejon									-78	-83	-95					-256
Cabrillo									-1	-8	-19					-28
Buchser									-103	-106	-107					-316
Peterson									-38	-37	-42					-117
Wilcox												-126	-111	-101	-105	-443
Santa Clara												-139	-137	-130	-109	-515
	-24	-72	-72	-72	-72	-72	-72	-72	-220	-234	-263	-265	-248	-231	-214	-2,131

Assumptions

- (1) TK-5 attendance comes equally from existing schools
- (2) MS enrollment includes students currently attending Don Callejon who don't reside in Rivermark attendance area
- (3) Alternative H.S. students continue at New Valley
- (4) Enrollment as of October, 2015

Schools Options:

	Two	Three	EIR
K-5		456	
6-8		717	
K-8	1,173		1,000
(3) 9-12	958	958	1,800
	2,131	2,131	2,800

Scenario 2 Don Callejon changes to K-5 school

Agnews Enrollment:

Attendance Areas	Grades														Totals
	TK	K	1	2	3	4	5	6	7	8	9	10	11	12	
Agnews (1)	24	72	72	72	72	72	72								456
Hughes (2), (4)								71	83	95					249
Mayne								96	101	107					304
Montague								53	50	61					164
Don Callejon								69	56	44					169
Santa Clara											139	137	130	109	515
Wilcox											126	111	101	105	443
	24	72	72	72	72	72	72	289	290	307	265	248	231	214	2,300

Changes in Neighboring Schools:

Hughes	-7	-24	-24	-24	-24	-24	-24									-151
Mayne	0	-24	-24	-24	-24	-24	-24									-144
Montague	-17	-24	-24	-24	-24	-24	-24									-161
Don Callejon								-136	-127	-125						-388
Cabrillo								-1	-14	-30						-45
Buchser								-105	-107	-107						-319
Peterson								-47	-42	-45						-134
Wilcox											-126	-111	-101	-105		-443
Santa Clara											-139	-137	-130	-109		-515
	-24	-72	-72	-72	-72	-72	-72	-289	-290	-307	-265	-248	-231	-214		-2,300

Assumptions

- (1) TK-5 attendance comes equally from existing schools
- (2) MS enrollment includes students currently attending Don Callejon who don't reside in Rivermark attendance area
- (3) Alternative H.S. students continue at New Valley
- (4) Enrollment as of October, 2015

Schools Options:

	Two	Three	EIR
K-5		456	
6-8		886	
K-8	1,342		1,000
(3) 9-12	958	958	1,800
	2,300	2,300	2,800



Scenario 3 All Elementary Schools convert to K-8

Agnews Enrollment:

Attendance Areas	Grades												Totals		
	TK	K	1	2	3	4	5	6	7	8	9	10		11	12
Agnews (1)	24	72	72	72	72	72	72	72	72	72					672
Hughes (2), (4)															-
Mayne															-
Montague															-
Don Callejon															-
Santa Clara											139	137	130	109	515
Wilcox											126	111	101	105	443
	24	72	72	72	72	72	72	72	72	72	265	248	231	214	1,630

Changes in Neighboring Schools:

Hughes	-7	-24	-24	-24	-24	-24	-24	47	59	71					26
Mayne	0	-24	-24	-24	-24	-24	-24	72	77	83					88
Montague	-17	-24	-24	-24	-24	-24	-24	29	26	37					-69
Don Callejon								-67	-71	-81					-219 (5)
Cabrillo								-1	-14	-30					-45
Buchser								-105	-107	-107					-319
Peterson								-47	-42	-45					-134
Wilcox											-126	-111	-101	-105	-443
Santa Clara											-139	-137	-130	-109	-515
	-24	-72	-72	-72	-72	-72	-72	-72	-72	-72	-265	-248	-231	-214	-1,630

Assumptions

- (1) TK-5 attendance comes equally from existing schools
- (2) Middle School students come from Hughes, Mayne and Montague attendance areas
- (3) Alternative H.S. students continue at New Valley
- (4) Enrollment as of October, 2015
- (5) Assumes all MS students in Rivermark attendance area return to Don Callejon School

Schools Options:

	Two	Three	EIR
K-5		456	
6-8		216	
K-8	672		1,000
(3) 9-12	958	958	1,800
	1,630	1,630	2,800

Hughes Elementary

Site Area 9.09 acres

Building Area

Permanent 45,556 sf

Portables 16,800

(18 cr, 37%)

Enrollment K-5, Oct 2015

K-3 307

4 94

5 63

Total 464

6-8 est. 190

Total 650

Needs:

Multipurpose

Administration

Science

Art / Music

PE

Library

19

\$20– 25M



Montague Elementary

Site Area 10.6 acres gross
 9.2 acres net

Building Area

Permanent 47,863 sf
Portables 7,680

Enrollment K-5, Oct 2015

K-3	272
4	53
5	<u>49</u>
Total	374
6-8 est.	<u>150</u>
Total	524

Needs:

Multipurpose
Administration
Science
Art / Music
PE
Library \$20– 25M



George Mayne Elementary

Site Area 7.44

Building Area

Permanent	37,485 sf
Gym	3,840
Portables	7,680

Enrollment K-5, Oct 2015

K-3	348
4	93
5	<u>91</u>
Total	532
6-8 est.	<u>270</u>
Total	802

Needs:

- Multipurpose
- Administration
- Science
- Art / Music
- Library \$30 – 35M



Projected Enrollments from 2014 to 2014

Source: Enrollment Projection Report by
 Enrollment Projection Consultants
 Page 6

Table B North of Highway 101 in Santa Clara and Sunnyvale

			TK-5	6-8	9-12	TK-12
Actual, as of October	2014		1,562	528	675	2,765
Projected	2 years	2016	1,578	573	683	2,834
	5 years	2018	1,624	583	740	2,947
	6 years	2019	1,613	591	782	2,986
	10 years	2024	1,657	608	758	3,023
Change	2 years	2016	16	45	8	69
	5 years	2019	51	63	107	221
	10 years	2024	95	80	83	258

Table C North of Highway 101 in San Jose

			TK-5	6-8	9-12	TK-12
Actual, as of October	2014		678	331	378	1,387
Projected	2 years	2016	723	312	448	1,483
	5 years	2018	840	319	499	1,658
	6 years	2019	945	335	505	1,785
	10 years	2024	1,449	500	591	2,540
Change	2 years	2016	45	-19	70	96
	5 years	2019	267	4	127	398
	10 years	2024	771	169	213	1,153

Tables 2B and 2C North of 101 in Santa Clara, Sunnyvale and San Jose

			TK-5	6-8	9-12	TK-12
Actual, as of October	2014		2,240	859	1,053	4,152
Actual, as of October	2015		1,952	886	1,002	3,840
Projected	2 years	2016	2,301	885	1,131	4,317
	5 years	2018	2,464	902	1,239	4,605
	6 years	2019	2,558	926	1,287	4,771
	10 years	2024	3,106	1,108	1,349	5,563
Change	2 years	2016	61	26	78	165
	5 years	2019	318	67	234	619
	10 years	2024	866	249	296	1,411

