



SANTA MONICA-MALIBU UNIFIED SCHOOL DISTRICT

SMIMUSD School Facilities:

What we've done,

What we're doing,

What needs remain

Board of Education

July 19, 2018

Carey Upton, Chief Operations Officer



Measure BB and Measure ES

Measure BB was passed by voters in 2006 authorizing \$276 Million in bond sales.

Measure ES was passed by voters in 2012 authorizing \$375 Million in bond sales.

THE FUNDS FROM BOTH MEASURES HAVE
IMPROVED SCHOOL FACILITIES AND
LEARNING IN THE DISTRICT.

Middle and High Schools

John Adams Middle School

New Construction (9 classrooms, Entrance and Attendance Office), Modernization (Art Room and Admin Offices), Parking Lot and Green Fringe



DONE AND DOING

Middle and High Schools

John Adams Middle School



DONE AND DOING

Middle and High Schools

Lincoln Middle School

New Construction (Library and # of Classrooms) and
Modernization (# science labs and classrooms)



DONE AND DOING

Middle and High Schools

Lincoln Middle School



Middle and High Schools

Santa Monica High School

New Innovation Building (classrooms, science labs, house office, auto shop)



DONE AND DOING

Middle and High Schools

Santa Monica High School



DONE AND DOING

Middle and High Schools

Malibu High School

New Construction: Library, three Science Labs, Entrance, and Admin building and Middle School Building



DONE AND DOING

Middle and High Schools

Malibu High School

DONE AND DOING



Middle and High Schools

Olympic High School

Modernization (Library, Labs, Classrooms and Admin)

DONE AND DOING



Middle and High Schools

Olympic High School



Middle and High Schools

Lincoln Middle School

New field and track, with LED lighting and restrooms



DONE AND DOING

Middle and High Schools

John Adams Middle School

Adams MS: Gym Floor Replacement, Synthetic Turf Replacement, Improved Accessibility



DONE AND DOING

Middle and High Schools

Santa Monica High School

Samohi: Adding Softball to Sealy Field, LED lighting



DONE AND DOING

Middle and High Schools

John Adams Middle School Auditorium Replacement
in collaboration with Santa Monica College

DONE AND DOING



HGA Architects

TERRACE

Middle and High Schools

John Adams Middle School Auditorium Replacement
in collaboration with Santa Monica College

DONE AND DOING



HGA Architects

MAIN HALL CONCERT

Middle and High Schools

Santa Monica High School: Discovery Building



DONE AND DOING

Middle and High Schools

Santa Monica High School: Discovery Building

DONE AND DOING



Middle and High Schools

Santa Monica High School: Discovery Building

DONE AND DOING



Middle and High Schools

NEEDED

John Adams & Lincoln Middle Schools

Window, Paint & Modernization & HVAC

The majority of classrooms at Lincoln and Adams have not been updated in decades and need safety, security and accessibility upgrades as well as repairs and modernization of classrooms.



Lincoln



JAMS



Middle and High Schools

Samohi Campus Plan
Phases 3 & 3A

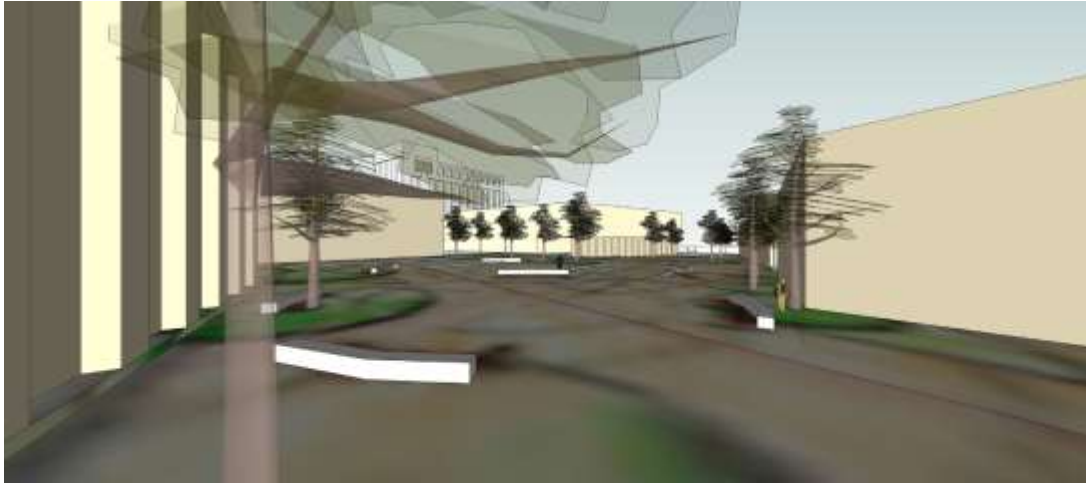
NEEDED



Middle and High Schools

Samohi Campus Plan
Phases 3 & 4

NEEDED



Middle and High Schools

Remaking Malibu High School and creating a separate Middle School



NEEDED

Preschool and Elementary

Edison Elementary

New School Construction (including land acquisition)

DONE AND DOING



Preschool and Elementary

Edison Elementary



DONE AND DOING





Preschool and Elementary

WINDOW PAINT & FLOOR MODERNIZATION

Elementary School - Window, Paint & Floor
Modernization Projects, includes Doors, some Ceilings,
Fire Alarm, Accessibility, and some HVAC

Completed: Grant, Rogers, Cabrillo, Roosevelt,
Webster, Olympic

In Construction: Point Dume, McKinley, Franklin

In Design: Washington West, Muir/SMASH

DONE AND DOING



Webster, WPF&D Project



Preschool and Elementary

DONE AND DOING



ROGERS LIBRARY
BEFORE

AFTER



Preschool and Elementary



ROGERS BEFORE

ROGERS AFTER



Preschool and Elementary

NEEDED

Complete Window, Paint & Floors (Fire Alarm & Accessibility):

Lincoln Child Development Center, John Muir Elementary/Santa Monica Alternative School House (SMASH), and Washington West Preschool





Preschool and Elementary

NEEDED

Complete Heating, Ventilation and Air Conditioning System and Electrical upgrades:

Grant Elementary, Lincoln Child Development Center, John Muir Elementary/Santa Monica Alternative School House (SMASH), Roosevelt Elementary, and Will Rogers Elementary

Preschool and Elementary

NEEDED

Replace old portable classrooms that have far surpassed their useful life with permanent classrooms that meet today's safety and learning standards and are energy efficient

Remove 55 portables at elementary schools

Webster ES: remove 3 portables

Cabrillo ES: remove 4 portables

Franklin ES: remove 13 portables

McKinley ES: remove 9 portables

Roosevelt ES: remove 10 portables

Grant ES: remove 6 portables

Muir ES / SMASH: remove 4 portables

Will Rogers ES: remove 6 portables

Preschool and Elementary

NEEDED

Roosevelt Portables



Franklin Portables



Grant Portables



Preschool and Elementary

Preschool Addition:

Franklin Elementary, McKinley Elementary, John Muir Elementary, Point Dume Marine Science School, Will Rogers Elementary, Roosevelt Elementary, and Webster Elementary

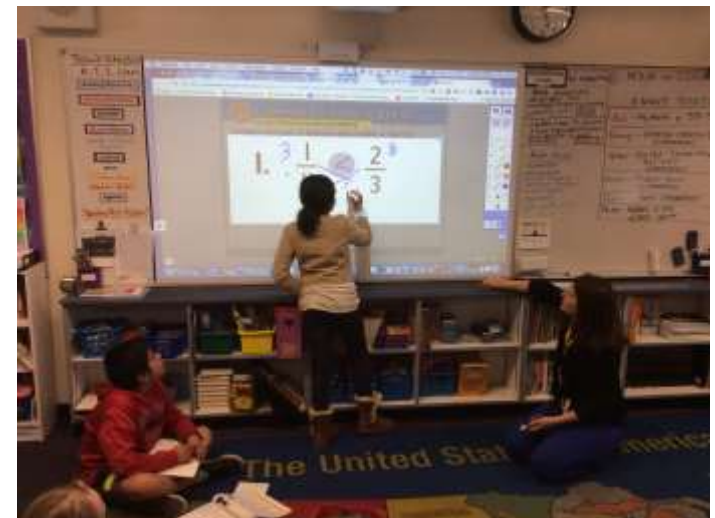
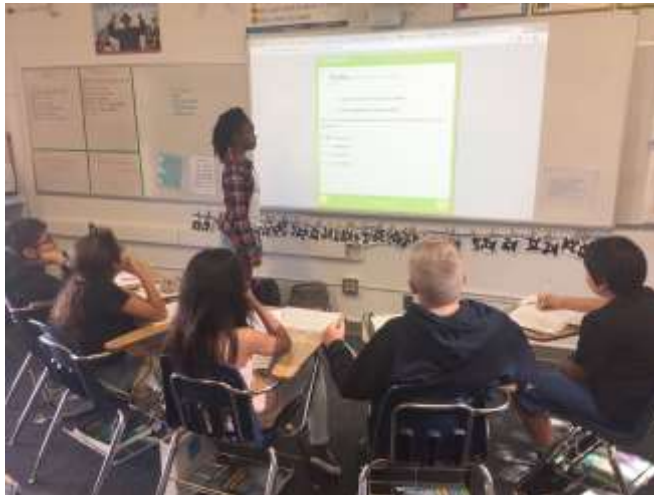
NEEDED



Districtwide

Districtwide 21st Century Classroom Technology

DONE AND DOING



Districtwide

Districtwide Safety and Security

cameras, electronic locks, gate and perimeter-control systems, emergency communications

Franklin



Grant



Samohi



McKinley



NEEDED

Districtwide

Repair, add and Upgrade Restrooms

Samohi



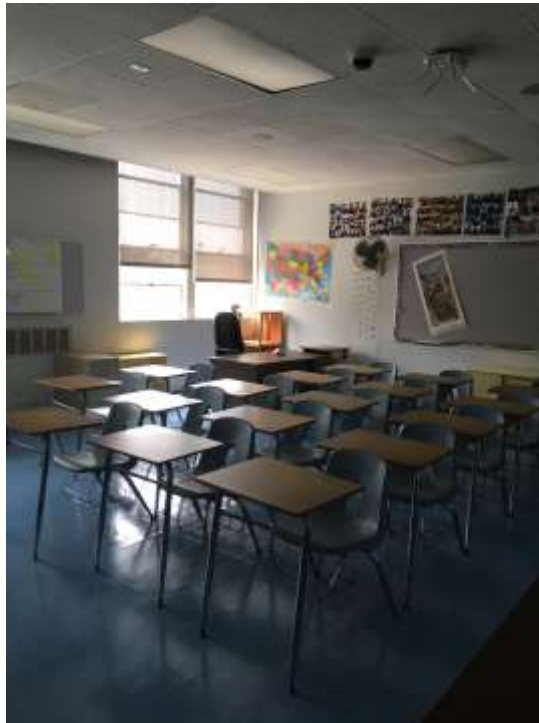
NEEDED

Districtwide

Construct more science, technology, engineering, arts and math labs and upgrade classrooms and outdoor learning areas to support 21st-century, collaborative and project-based teaching and learning

NEEDED

Samohi



Districtwide

Exchange thirty- to forty-year-old furniture with more movable and flexible furniture to support varied modes of learning

NEEDED



Districtwide

Sustainability, Solar and Renewables:

Juan Cabrillo Elementary, Franklin Elementary, Grant Elementary, McKinley Elementary, John Muir Elementary, Point Dume Marine Science School, Will Rogers Elementary, Roosevelt Elementary, Santa Monica Alternative School House (SMASH), and Webster Elementary



NEEDED



DISTRICT WIDE NEEDS

- Improve security and safety on each campus, including systems that deter active shooters
- Repair leaky roofs, deteriorating electrical and plumbing infrastructure and add air conditioning where still needed
- Repair, add and upgrade restrooms
- Replace old portable classrooms that have far surpassed their anticipated life with permanent classrooms that meet today's safety and learning standards and are energy efficient
- Construct more science, technology, engineering, arts and math labs and upgrade classrooms and outdoor learning areas to support 21st-century, collaborative and project-based teaching and learning
- Exchange thirty- to forty-year-old furniture with more movable and flexible furniture to support varied modes of learning
- Improve playgrounds to increase safety and access



PREK and ELEMENTARY NEEDS

- Safety and security improvement (cameras, electronic locks, gate and perimeter-control systems, emergency communications)
- *Window, Paint & Floors (Fire Alarm & Accessibility):* John Muir Elementary/Santa Monica Alternative School House (SMASH)
- *Heating, Ventilation and Air Conditioning System and Electrical upgrades:* Grant Elementary, Lincoln Child Development Center, John Muir Elementary/Santa Monica Alternative School House (SMASH), Roosevelt Elementary, Webster Elementary and Will Rogers Elementary
- *Portable Replacement and Multi-Purpose Room Construction:* Juan Cabrillo Elementary, Franklin Elementary, Grant Elementary, McKinley Elementary, John Muir Elementary/Santa Monica Alternative School House (SMASH), Point Dume Marine Science School, Will Rogers Elementary, Roosevelt Elementary, and Webster Elementary
- *Preschool Addition:* Franklin Elementary, McKinley Elementary, John Muir Elementary, Point Dume Marine Science School, Will Rogers Elementary, Roosevelt Elementary, and Webster Elementary
- *Sustainability, Solar and Renewables:* Franklin Elementary, Grant Elementary, McKinley Elementary, John Muir Elementary/ Santa Monica Alternative School House (SMASH), Point Dume Marine Science School, Will Rogers Elementary, Roosevelt Elementary, , and Webster Elementary



MIDDLE & HIGH SCHOOL NEEDS

- Safety and security improvement (cameras, electronic locks, gate and perimeter- control systems, emergency communications)
- *Window, Paint & Floors (Fire Alarm & Accessibility):* John Adams Middle School and Lincoln Middle School
- *HVAC and Electrical upgrades:* John Adams Middle School, Lincoln Middle, and sections of Santa Monica High School and Malibu High School not planned for immediate replacement
- *Sustainability, Solar and Renewables:* John Adams Middle School, Olympic High School, Santa Monica High School, Lincoln Middle School & Malibu High School
- *New Construction:*
 - *Samohi* – Phase 3 Classroom/Library Building, 3A South Gym Replacement, Phase 4 Classroom/Visual Art Labs to language, science, technology, engineering, arts, math instruction and career skills and physical education programs
 - *Malibu High School* – Phase 1 and possibly Phase 2 of the developing Campus Plan to remake Malibu Middle and High School



NEEDS

WE WILL NOT BE ABLE TO DO EVERYTHING
WE JUST DISCUSSED

THERE ARE MORE FACILITY NEEDS THAN
THERE WILL AVAILABLE FUNDS FROM
PROPOSED 2018 BONDS



Educational Specifications

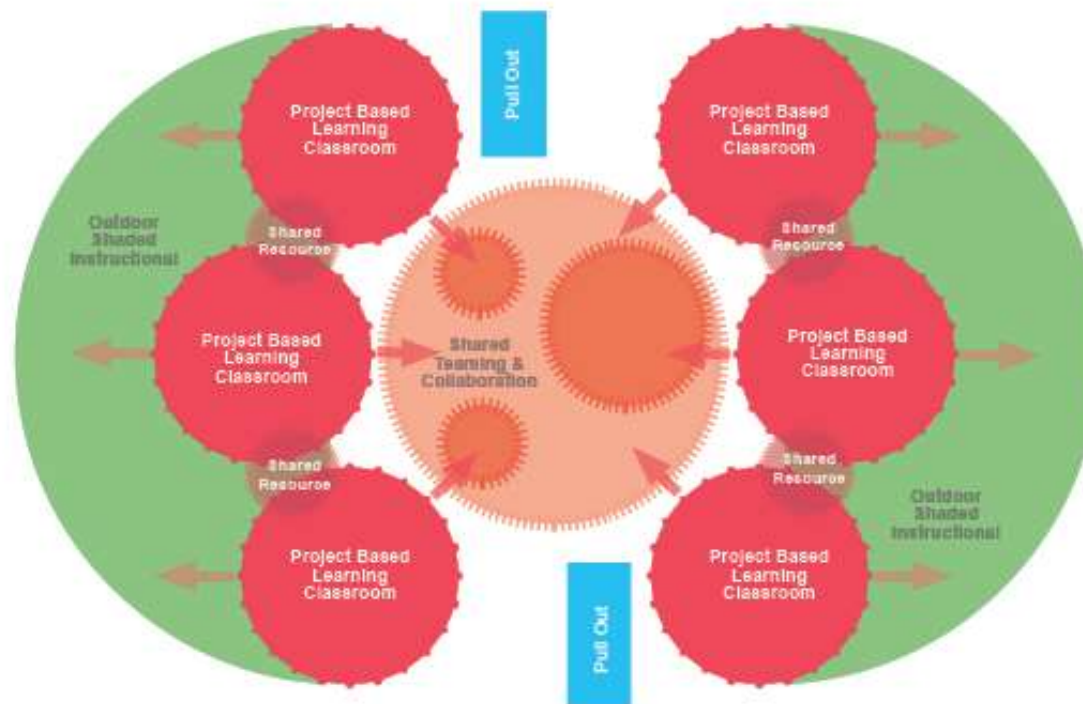
Purpose & Outcomes of the SMMUSD Educational Specifications

- Establish Future Instructional Delivery that Aligns to Goals of SMMUSD LCAP and Excellence through Equity Initiative
- Provide 21st Century Learning Environments that Encourage Individual, Small Group and All Class Instruction that Embraces the Unique Programs at SMMUSD
- Design Spaces for Students to Function at the Highest Level
- Enlist Results Driven Approach to Student Success
- Enhance Student and Family Access to Resources to Increase Student Success

Educational Specifications

Completed and Approved by November 2018

Same Grade Adjacency Diagram





Questions ???

Thank You!