

# LCHS 7-12 New Elective Course Offerings 2016-2017

Governing Board Information Presentation

March 1, 2016

# LCAP Priority – Student Engagement

## Superintendent's Goal

- *Review the LCHS 7/8 and 9-12 Electives, improving offerings as permitted by the master schedule and staffing considerations.*
- *Engage in action research related to best practices and models for STEM and STEAM pathways; assess college and career outcome or advantages related to specific pathways; review permanent status FTE issues and impediments; assess student interest; generate short and long-term plans for change.*

# A New Language in Education For A New Century

## A Glossary of Terms

- 21st Century Learning - knowledge, skills, work habits, and character traits
- New Standards - In Math, English Language Arts, and Science
- CTE - Career and Technical Education
- Pathways - Academic and Occupational Knowledge Integrated in Multiyear Sequence of Courses
- STEM - Science, Technology, Engineering, and Math
- STEAM - Adds Applied or Industrial Arts to STEM

# CTE and the New Standards

- Increase College and Career Readiness
- Students Engage with Increased Complexity and Expectations as they Move Through the CTE Pathway
- Preparing Student for jobs that don't yet exist using technologies that haven't been invented in order to solve problems we don't even know are problems yet
- 12 Standards for Career Ready Practice
  - Apply Technology to Enhance Productivity
  - Critical Thinking and Perseverance in Problem Solving

# Our Goal with CTE Course Innovation

Schools Play a Vital Role -

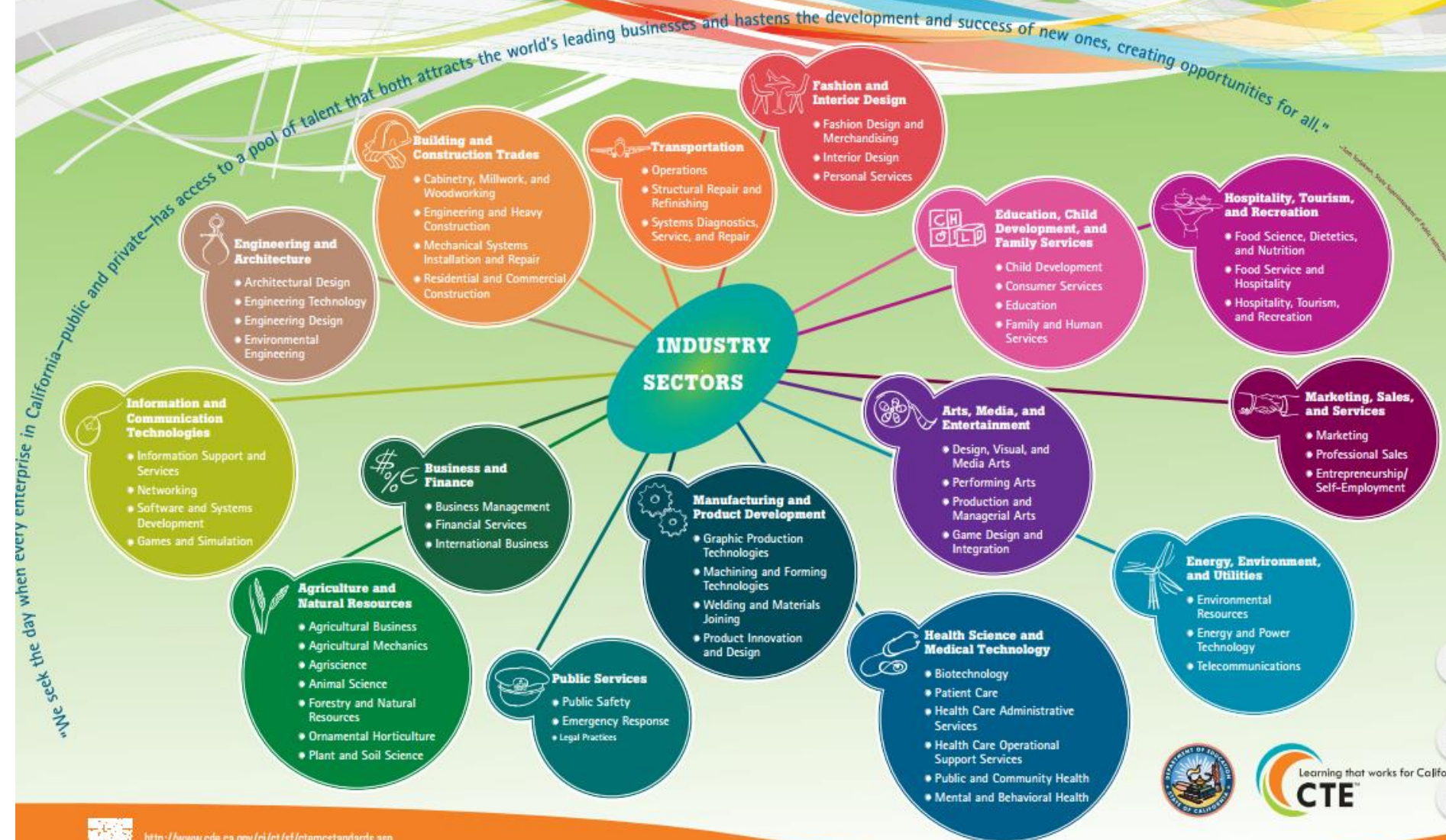
“We seek the day where every enterprise in California - public or private - has access to a pool of talent that both attract the world’s leading businesses and hastens the development of new ones, creating opportunities for us all.”

- Tom Torlakson

State Superintendent, Public Instruction

# California's Career Technical Education:

## Preparing Students for the 21st Century and Beyond



<http://www.cde.ca.gov/ct/st/ctemcstandards.asp>



5:18 AM  
2/19/2016

# Under Consideration 2017 – 2018 and Beyond

- Pathway Possibilities- Engineering, Architecture and Design (Project Lead the Way)
- Pathway Possibilities - Hospitality, Tourism and Recreation
- Pathway Possibilities - Arts, Media and Entertainment
- Pathway Possibilities - Health Sciences
- Pathway Possibilities - Transportation, Automotive Technology and Design

# LCCHS 7/8 – Interests and Priorities

- Developing Science, Technology, Engineering, Applied Arts, and Mathematics elective opportunities for students
- Promoting the visual and performing arts in 7/8
- Providing middle school students with 21<sup>st</sup> century learning opportunities
- Building Career Technical Education (CTE) awareness in 7/8 students
- Growing the declining numbers in the 7/8 Band Program

“The top ten in-demand jobs in 2010 . . . did not exist in 2004.”



# Opening Options for 7/8 Elective Exploration

- Increasing numbers of 7/8 students have opted to enroll in a World Language as their elective, largely due to the elementary Spanish program
- This limits or eliminates their opportunities to explore STEAM, CTE, the arts or other elective offerings
- Innovation: Offer 2 zero period PE courses to open a period in approximately 90 – 110 students' instructional day

# New LCHS 7/8 Elective Offerings – 2016-17

- Expand 7/8 Band – Beginning and Advanced (priority enrollment in zero period PE)
- Create a 7/8 LCTV
- Create a 7/8 Coding class
- Imbed the 7/8 STEAM class into the regular day
- All of the current offerings will be offered for 16-17

# Current Offerings That Will Continue In 16-17

- Art/Ceramics
- Speech and Debate
- World Language
- Communications/Newspaper
- Drama
- Yearbook
- Orchestra
- Band
- Choir (Vocal, Women's)

# LCCHS 9-12 – Interests and Priorities

- Begin to Build Career Technical Education Pathways
  - Project Lead the Way
  - LCTV
- Introduce a 9<sup>th</sup> Grade Elective which focuses on *Healthy Living*
- Emphasize the visual, performing, and applied arts elective opportunities for students
- Support students with World Language enrichment as we explore on-line learning opportunities

# Project Lead the Way – Engineering Pathway

- Courses that Emphasize
  - Open-Ended Problem Solving
  - Application of Engineering Principles and Design Process
  - Use of Modern Technologies
- 3 Class Pathway
  - Introduction to Engineering Design - VPA Elective 2016-17
  - Principles of Engineering - 2017-18
  - Engineering Design and Development - 2018-19

# LCTV

- **LCTV 1 - Introduction to Video Production - 2016-17 VPA Elective**
- **LCTV 2 - Intermediate Video Production - 2017-18**
- **LCTV 3 - Advanced Video Production - 2018-19**



# 9<sup>th</sup> Grade Modern Issues/Teen Living “Pilot”

- 9th Grade Elective for 2016-17
  - Life Management Skills in the Following Domains
    - Personal and Family Living
    - Wellness, Nutrition, Food and Health
    - Thriving Behaviors and Developmental Assets
    - Digital Citizenship and Social Media Responsibility
    - Appropriate Child Development Practices
- Pilot course - 2016-17

• To assess course efficacy for potential larger course offering in 2017-18

# Jazz Band





# Support for Student Success

- Challenge Success
- On-Line Learning Enrichment Support Options
- Service Nation
- Modern Issues/Teen Living
- Maintain low counselor/student ratios

# Considerations and Challenges

- Zero period start for 7/8
- Student Interest
- Current elective offerings
- Current Staffing
- Declining Enrollment
- Scheduling and Facilities Limitations
- Funding

# QUESTIONS AND DISCUSSION