



**Channel Partner
Industrial Solutions**

Jason Vincent
City Electric Supply (subsidiary of CED)
360 TESCONI CIR
SANTA ROSA, CA 95401
jvincent@cityelectric.com
May 16, 2018
Quote No.: UL8-00001336 Rev. 0.1
Quote Name: Venetia Valley MSB

Yuriy Vorobyev
Mike Brown Electric
561 Mercantile Dr. #A
Cotati, CA 94931

Dear Yuriy,

Thank you for your inquiry for **Venetia Valley MSB**. We are pleased to respond with our proposal based on the requirements of your inquiry. Please contact us with any questions. We look forward to working with you on this opportunity.

Best Regards,

Jason Vincent
City Electric Supply (subsidiary of CED)

Notes

Project Level

PROPRIETARY AND CONFIDENTIAL INFORMATION

This document contains confidential and proprietary information. Upon receipt of this document, the receiver agrees to not to reveal its content, except to those people inside of their own organization to who concerned to do the evaluation of this proposal. No copies of this document should be made without permission. This document shall be returned upon its written request.



Channel Partner
Industrial Solutions

Summarized Bill of Material(s)

Quantity	Description	Item(s)	Mark(s)
2	Switchboard	1	MSB
		2	DBIH

Total Net Price

The total net price for the item(s) defined in this quotation is:

\$52,520.23 USD



Channel Partner
Industrial Solutions

Bill of Material(s)

Item No.	Quantity	Description
1	1	Switchboard, Spectra Bolt-On AV5 Marks: MSB
		5 Section(s) Service Entrance
		Estimated Shipping Weight: 4875 lbs
1		Service Entrance Labeling 3P4W/208/120V/60Hz 2500A 65 kAIC Fully Rated Incoming Feed: Bottom Incoming Right Feeding Left Type 3R (non-walk-in) Enclosure Front/Rear Lineup Front Only Access
1		Spectra Switchboard Lineup Estimated total factory connected wiring points for the lineup 90
1		Group Mounted Feeder Section 40W 40D 90H (Est.) lbs 978
1		Group Mounted Feeder Section 45W 40D 90H (Est.) lbs 1099
1		Individually Mounted Feeder Section 35W 40D 90H (Est.) lbs 779
1		Utility/Main Section 40W 40D 90H (Est.) lbs 1252
1		Utility Termination Compartment Section 50W 40D 90H (Est.) lbs 766
5		Bus Bracing 65000 AIC
5		Fully Rated Aluminum Bus 750 A/Sq. in.
5		Ground: Equipment U/L With Lugs
5		Seismic Rating
		Utility
1		2500A Utility Compartment - PACIFIC GAS & ELECTRIC
2		2 Meter Socket(s) 4W
		Main Breaker
1		2500A 3 Pole SS (2500A Frame) Indiv. Mtd. Main Manually Operated MAIN Programmer(ETU) LSI
1		RELT
1		EPM2200 (PL2200C1S)
1		Current Transformer (3)
		Feeders
1		1200A 3 Pole SKLC12 (1200A Frame) Indiv. Mtd.
1		Manually Operated Programmer(MET) LSI
1		RELT



Channel Partner
Industrial Solutions

Item No.	Quantity	Description
	1	EUSERC PADLOCK PROVISIONS
	18	Mechanical (1 Hole) AL Load Lugs
	3	100A 3 Pole TEY (100A Frame)
	3	Manually Operated
	3	PADLOCK PROVISION
	3	Mechanical AL Load Lugs
	1	800A 3 Pole SKHA8 SPACE
	1	Manually Operated
	1	Mounting Hardware
	1	800A 3 Pole SKHA8 (800A Frame)
	1	Manually Operated
	1	EUSERC PADLOCK PROVISION
	3	Mechanical AL Load Lugs
	1	600A 3 Pole SGHA6 (600A Frame)
	1	Manually Operated
	1	EUSERC PADLOCK PROVISION
	2	Mechanical AL Load Lugs
	2	400A 3 Pole SGDA4 (400A Frame)
	2	Manually Operated
	2	EUSERC PADLOCK PROVISION
	4	Mechanical AL Load Lugs
	4	225A 3 Pole SFHA (250A Frame)
	4	Manually Operated
	4	EUSERC PADLOCK PROVISION
	4	Mechanical AL Load Lugs
	3	200A 3 Pole SFHA (250A Frame)
	3	Manually Operated
	3	EUSERC PADLOCK PROVISION
	3	Mechanical AL Load Lugs
	2	175A 3 Pole SFHA (250A Frame)
	2	Manually Operated
	2	EUSERC PADLOCK PROVISION
	2	Mechanical AL Load Lugs
		Monitoring/Control Devices
	1	RELT Power Supply 8 max
	1	Power Supply Plate
		Others
	19	Engraved Nameplates
	19	Screw-On Nameplates
		Others
	1	Lifting Brackets



Item No.	Quantity	Description
	2	Spectra Bolt-On (C/B feeders only) 28X
	2	3P SKHA8 Single BR Module
	1	6P SGHA6/SGDA4 Double BR Module
	4	6P SFHA Double BR Module
	1	3P SFHA Single BR Module
	2	6P TEY Double BR Module
	1	3P SGDA4 Single BR Module
	9	Neutral Lugs
	9	Neutral Lugs
	3	Neutral Lugs
	6	Neutral Lugs
	1	Bonding Jumper
	36	Equipment Ground Lugs
	1	Ground Lug
		Miscellaneous Add Ons:
	12	LUG - Mechanical (1 Hole) AL 250-600 MCM
	1	SEE DRAWING NOTES
2	1	Switchboard, Spectra Bolt-On AV2
		Marks: DBIH
		3 Section(s)
		Estimated Shipping Weight:1972 lbs
		3P4W/208/120V/60Hz
		1200A 30 kAIC Fully Rated
		Incoming Feed: Top
		Incoming Left Feeding Right
		Type 3R (non-walk-in) Enclosure
		Front/Rear Lineup
		Front Only Access
	1	Spectra Switchboard Lineup
		Estimated total factory connected wiring points for the lineup 24
	1	Bussed Pull Section 30W 25D 90H (Est.) lbs 496
	1	Main Section 30W 25D 90H (Est.) lbs 675
	1	Group Mounted Feeder Section 35W 25D 90H (Est.) lbs 801
	3	Bus Bracing 65000 AIC
	3	Fully Rated Copper Bus 1000 A/Sq. in.
	3	Ground: Equipment U/L With Lugs
	3	Seismic Rating
		Main Breaker
	1	1200A 3 Pole SKHC12 (1200A Frame) Indiv. Mtd. Main



Channel Partner
Industrial Solutions

Item No.	Quantity	Description
		Manually Operated MAIN Programmer(MET) LSI
1		RELT
20		Mechanical (1 Hole) AL Line Lugs
		Feeders
2		400A 3 Pole SGDA4 (400A Frame)
2		Manually Operated
4		Mechanical AL Load Lugs
1		300A 3 Pole SGDA4 (400A Frame)
1		Manually Operated
2		Mechanical AL Load Lugs
1		200A 3 Pole SFHA (250A Frame)
1		Manually Operated
1		Mechanical AL Load Lugs
		Monitoring/Control Devices
1		Power Supply Plate
		Others
5		Engraved Nameplates
5		Screw-On Nameplates
		Others
1		Lifting Brackets
1		Spectra Bolt-On (C/B feeders only) 28X
3		3P SGDA4 Single BR Module
1		3P SFHA Single BR Module
6		Neutral Lugs
1		Neutral Lugs
1		Lug Section - Connectors
12		Equipment Ground Lugs
1		Ground Lug

GEAR SUBMITTALS

Project:

Venetia Valley Interim Housing
San Rafael, CA

Date: 05/16/2018

Electrical Contractor:
Mike Brown Electric

Submittals provided by:
City Electric Supply
Santa Rosa, CA



Channel Partner
Industrial Solutions

Equipment Submittal

Customer: Mike Brown Electric
Project: Venetia Valley MSB
Quote No.: UL8-00001336 Rev. 0.1
PO No.: 0
Date Issued: May 16, 2018
Prepared by: Jason Vincent, City Electric Supply (subsidiary of CED)

Notice

These drawings represent our best interpretation and compliance with the intent of your requirement. Drawings marked "approved" or "approved as noted" authorize the manufacturer to proceed with manufacturing. Product revisions not in the contract or items specified but not noted on the returned drawings which may require modification to be made after drawing approval and during or after completion of manufacturing may result in a price change and/or shipment delay.

Dimensions and weights shown are approximate until all design parameters are approved. It is recommended to not install conduit equipment pads, etc. until after the approval process is complete and any changes to the drawings submitted are accurately updated and issued accordingly.

This document contains confidential and proprietary information. Upon receipt of this document, the receiver agrees to not to reveal its content, except to those people inside of their own organization to who concerned to do the evaluation of this proposal. No copies of this document should be made without permission. This document shall be returned upon its written request.



Channel Partner
Industrial Solutions

Notes

Project Level - Notes

Main switchboard to be produced in 7 weeks plus transit.

Distribution panel DBIH to be produced in 5 weeks plus transit.



Channel Partner
Industrial Solutions

Table of Contents

Introduction.....	1
Cover Page.....	1
Quote Notes	2
Bill of Material(s) - All Items	4
Switchboard.....	8
Section Title Page	8
Product Notes.....	9
Bill of Material(s).....	10
Drawing(s).....	14



Channel Partner
Industrial Solutions

Bill of Material(s)

Item No.	Quantity	Description
1	1	Switchboard, Spectra Bolt-On AV5 Marks: MSB
		5 Section(s) Service Entrance Estimated Shipping Weight: 4875 lbs
1		Service Entrance Labeling 3P4W/208/120V/60Hz 2500A 65 kAIC Fully Rated Incoming Feed: Bottom Incoming Right Feeding Left Type 3R (non-walk-in) Enclosure Front/Rear Lineup Front Only Access
1		Spectra Switchboard Lineup Estimated total factory connected wiring points for the lineup 90
1		Group Mounted Feeder Section 40W 40D 90H (Est.) lbs 978
1		Group Mounted Feeder Section 45W 40D 90H (Est.) lbs 1099
1		Individually Mounted Feeder Section 35W 40D 90H (Est.) lbs 779
1		Utility/Main Section 40W 40D 90H (Est.) lbs 1252
1		Utility Termination Compartment Section 50W 40D 90H (Est.) lbs 766
5		Bus Bracing 65000 AIC
5		Fully Rated Aluminum Bus 750 A/Sq. in.
5		Ground: Equipment U/L With Lugs
5		Seismic Rating
		Utility
1		2500A Utility Compartment - PACIFIC GAS & ELECTRIC
2		2 Meter Socket(s) 4W
		Main Breaker
1		2500A 3 Pole SS (2500A Frame) Indiv. Mtd. Main Manually Operated MAIN Programmer(ETU) LSI
1		RELT
1		EPM2200 (PL2200C1S)
1		Current Transformer (3)
		Feeders
1		1200A 3 Pole SKLC12 (1200A Frame) Indiv. Mtd.
1		Manually Operated Programmer(MET) LSI
1		RELT



Channel Partner
Industrial Solutions

Item No.	Quantity	Description
	1	EUSERC PADLOCK PROVISIONS
	18	Mechanical (1 Hole) AL Load Lugs
	3	100A 3 Pole TEY (100A Frame)
	3	Manually Operated
	3	PADLOCK PROVISION
	3	Mechanical AL Load Lugs
	1	800A 3 Pole SKHA8 SPACE
	1	Manually Operated
	1	Mounting Hardware
	1	800A 3 Pole SKHA8 (800A Frame)
	1	Manually Operated
	1	EUSERC PADLOCK PROVISION
	3	Mechanical AL Load Lugs
	1	600A 3 Pole SGHA6 (600A Frame)
	1	Manually Operated
	1	EUSERC PADLOCK PROVISION
	2	Mechanical AL Load Lugs
	2	400A 3 Pole SGDA4 (400A Frame)
	2	Manually Operated
	2	EUSERC PADLOCK PROVISION
	4	Mechanical AL Load Lugs
	4	225A 3 Pole SFHA (250A Frame)
	4	Manually Operated
	4	EUSERC PADLOCK PROVISION
	4	Mechanical AL Load Lugs
	3	200A 3 Pole SFHA (250A Frame)
	3	Manually Operated
	3	EUSERC PADLOCK PROVISION
	3	Mechanical AL Load Lugs
	2	175A 3 Pole SFHA (250A Frame)
	2	Manually Operated
	2	EUSERC PADLOCK PROVISION
	2	Mechanical AL Load Lugs
		Monitoring/Control Devices
	1	RELT Power Supply 8 max
	1	Power Supply Plate
		Others
	19	Engraved Nameplates
	19	Screw-On Nameplates
		Others
	1	Lifting Brackets



Item No.	Quantity	Description
	2	Spectra Bolt-On (C/B feeders only) 28X
	2	3P SKHA8 Single BR Module
	1	6P SGHA6/SGDA4 Double BR Module
	4	6P SFHA Double BR Module
	1	3P SFHA Single BR Module
	2	6P TEY Double BR Module
	1	3P SGDA4 Single BR Module
	9	Neutral Lugs
	9	Neutral Lugs
	3	Neutral Lugs
	6	Neutral Lugs
	1	Bonding Jumper
	36	Equipment Ground Lugs
	1	Ground Lug
		Miscellaneous Add Ons:
	12	LUG - Mechanical (1 Hole) AL 250-600 MCM
	1	SEE DRAWING NOTES
2	1	Switchboard, Spectra Bolt-On AV2
		Marks: DBIH
		3 Section(s)
		Estimated Shipping Weight:1972 lbs
		3P4W/208/120V/60Hz
		1200A 30 kAIC Fully Rated
		Incoming Feed: Top
		Incoming Left Feeding Right
		Type 3R (non-walk-in) Enclosure
		Front/Rear Lineup
		Front Only Access
	1	Spectra Switchboard Lineup
		Estimated total factory connected wiring points for the lineup 24
	1	Bussed Pull Section 30W 25D 90H (Est.) lbs 496
	1	Main Section 30W 25D 90H (Est.) lbs 675
	1	Group Mounted Feeder Section 35W 25D 90H (Est.) lbs 801
	3	Bus Bracing 65000 AIC
	3	Fully Rated Copper Bus 1000 A/Sq. in.
	3	Ground: Equipment U/L With Lugs
	3	Seismic Rating
		Main Breaker
	1	1200A 3 Pole SKHC12 (1200A Frame) Indiv. Mtd. Main



Channel Partner
Industrial Solutions

Item No.	Quantity	Description
		Manually Operated MAIN Programmer(MET) LSI
1		RELT
20		Mechanical (1 Hole) AL Line Lugs
		Feeders
2		400A 3 Pole SGDA4 (400A Frame)
2		Manually Operated
4		Mechanical AL Load Lugs
1		300A 3 Pole SGDA4 (400A Frame)
1		Manually Operated
2		Mechanical AL Load Lugs
1		200A 3 Pole SFHA (250A Frame)
1		Manually Operated
1		Mechanical AL Load Lugs
		Monitoring/Control Devices
1		Power Supply Plate
		Others
5		Engraved Nameplates
5		Screw-On Nameplates
		Others
1		Lifting Brackets
1		Spectra Bolt-On (C/B feeders only) 28X
3		3P SGDA4 Single BR Module
1		3P SFHA Single BR Module
6		Neutral Lugs
1		Neutral Lugs
1		Lug Section - Connectors
12		Equipment Ground Lugs
1		Ground Lug



Channel Partner
Industrial Solutions

Switchboard Submittal Section

Item No.	Product Description	Mark(s)	Quantity
1	Switchboard, Spectra Bolt-On AV5	MSB	1
2	Switchboard, Spectra Bolt-On AV2	DBIH	1

ACCESS TO: Front Only	PHASE: 3P4W	PACIFIC GAS & ELECTRIC
CLASS: 5	AMPERE: 2500A	CODE: PG PT COMPT
LABEL: U/L SE	BUS MTL: Al 750A/in ²	UTILITY PER EUSERC PG. 322, 330
VOLTAGE: 208/120V	PLATE: Tin Plate	METER PER EUSERC PG. 333, 326
STYLE: Bolt-On	RATING: Fully Rated	UGPS PER PG 345
BUS BRACING (RMS SYM):	65000A	LUG LANDING PER 347
DEV.MIN.INT.RATING (RMS SYM):	65000A	

Switchboard / Device Information

Circuit No.	Device	Amps	Poles	Nameplates	Lugs/Cable Size	Notes
Main	SS	2500	3			11,13,14,15
1	SKLC12	1200	3		(6) - 500 MCM CU - Mech. (1 Hole) AL	12,13,14,15
2	SFHA	175	3		(1) - #8 - 350 MCM CU - Mech. AL	14
3	SFHA	225	3		(1) - #8 - 350 MCM CU - Mech. AL	14
4	SFHA	225	3		(1) - #8 - 350 MCM CU - Mech. AL	14
5	SKHA8	800	3		(3) - 3/0 - 500 MCM CU - Mech. AL	14
6	SGHA6	600	3		(2) - 300 - 500 MCM CU - Mech. AL	14
7	SGDA4	400	3		(2) - 2/0 - 250 MCM CU - Mech. AL	14
8	SFHA	200	3		(1) - #8 - 350 MCM CU - Mech. AL	14
9	SFHA	200	3		(1) - #8 - 350 MCM CU - Mech. AL	14
10	TEY	100	3		(1) - #4 - 1/0 AWG CU - Mech. AL	14
11	TEY	100	3		(1) - #4 - 1/0 AWG CU - Mech. AL	14
12	TEY	100	3		(1) - #4 - 1/0 AWG CU - Mech. AL	14
13	SFHA	225	3		(1) - #8 - 350 MCM CU - Mech. AL	14
14	SFHA	225	3		(1) - #8 - 350 MCM CU - Mech. AL	14
15	SKHA8	800	3	(SPACE WITH MTG. HARDWARE)	(3) - 3/0 - 500 MCM CU - Mech. AL	16
16	SGDA4	400	3		(2) - 2/0 - 250 MCM CU - Mech. AL	14
17	SFHA	200	3		(1) - #8 - 350 MCM CU - Mech. AL	14
18	SFHA	175	3		(1) - #8 - 350 MCM CU - Mech. AL	14

NOTES:

- Switchboard furnished with a rainproof TYPE 3R (non-walk-in) enclosure.
NOTE: See plan view for details. Need additional 2 inch space clearance on top and 1.5 inch clearance on the rear of the swbd.
- Equipment ground bus furnished with lugs.
- Switchboard qualified for Seismic Ratings per publication DET-463 and OSP-0044-10.
- Switchboard furnished with Nameplates.
- All Nameplates to be fastened with screws.
- Switchboard furnished with fully rated panel.
- EUSERC utility section(s) furnished with handles and sealing provisions per EUSERC specifications.
- INSTALLATION NOTE: Caution: If switchboard is installed on a housekeeping slab greater than 2-1/2" the meter may be over the 6'3" maximum allowable meter height. Consult Utility if you need more information.
- Shipping splits as indicated, ship sections separated and joined as indicated.
- Pacific Gas and Electric limits the cable distance between the transformer secondary spades and the SWBD connection point to 50 feet max.
For greater distances change incoming to GE Spectra Busway.
- Device furnished with ETU (LSI) programmer.
- Device furnished with MET (LSI) programmer.
- Device is furnished with RELT (Reduced Energy Let Through).
- Device furnished with padlocking provisions.
- Device requires RELT or ZSI feature if Authority having jurisdiction has adopted NEC 2014 code requirements.
- Lugs not furnished with SPACE AND BUS.
- Estimated total factory connected wiring points for the lineup 90.
- EPM2200 (Modbus RS485 + Pulse) Meter installed in Switchboard
- Estimated shipping weight for the lineup is 4875 lbs.
- Miscellaneous Add-Ons:
12 LUG - Mechanical (1 Hole) AL 250-600 MCM
1 SEE DRAWING NOTES
- Due to the presence of Miscellaneous Add-Ons, please review drawings with the factory to ensure accuracy.

PROJECT NAME : Venetia Valley MSB	DWG TITLE: Device Information	CREATED BY: Vincent, Jason	PRODUCT NAME: Spectra Series™ Switchboard	DRAWING NO:
CUSTOMER: CITY ELECTRIC SUPPLY, SANTA ROSA		CHECKED BY:	APPROVED BY:	ITEM NO:
		DATE: 4/24/2018 7:28:31 PM	REVISION NO.: 3	MARKS: MSB
				QUOTE NO: UL8-00001336
				SHEET: 1 of 4

ACCESS TO: Front Only	PHASE: 3P4W	PACIFIC GAS & ELECTRIC
CLASS: 5	AMPERE: 2500A	CODE: PG PT COMPT
LABEL: U/L SE	BUS MTL: Al 750A/in ²	UTILITY PER EUSERC PG. 322, 330
VOLTAGE: 208/120V	PLATE: Tin Plate	METER PER EUSERC PG. 333, 326
STYLE: Bolt-On	RATING: Fully Rated	UGPS PER PG 345
BUS BRACING (RMS SYM):	65000A	LUG LANDING PER 347
DEV.MIN.INT.RATING (RMS SYM):	65000A	

Switchboard / Device Information

20. Drawing Notes:

INCOMING EUSERC UGPS TO HAVE PROVISION FOR 8 LUGS PER PHASE AND NEUTRAL
INCOMING UGPS LUGS STRAPS TO BE 3000A TO GET 8 LUGS PER PHASE AND NEUTRAL
1200A FEEDER TO HAVE (9) 500MCM LUGS PER PHASE AND NEUTRAL

21. As a result of Drawing Notes, this product may require modification to reflect correct footprint, price, cycle or UL certification.

PROJECT NAME : Venetia Valley MSB	DWG TITLE: Device Information	CREATED BY: Vincent, Jason	PRODUCT NAME:	DRAWING NO:
CUSTOMER: CITY ELECTRIC SUPPLY, SANTA ROSA		CHECKED BY:	<i>Spectra Series</i> ™	ITEM NO: 1
		APPROVED BY:	<i>Switchboard</i>	MARKS: MSB
		DATE: 4/24/2018 7:28:31 PM		QUOTE NO: UL8-00001336
		REVISION NO.: 3		SHEET: 2 of 4



ACCESS TO: Front Only	PHASE: 3P4W
CLASS: 2	AMPERE: 1200A
LABEL: U/L	BUS MTL: Cu 1000A/in ²
VOLTAGE: 208/120V	PLATE: Silver Plate
STYLE: Bolt-On	RATING: Fully Rated
BUS BRACING (RMS SYM):	65000A
DEV.MIN.INT.RATING (RMS SYM):	30000A

Switchboard / Device Information

Circuit No.	Device	Amps	Poles	Nameplates	Lugs/Cable Size	Notes
Main	SKHC12	1200	3			9,10,11
1	SGDA4	300	3		(2) - 2/0 - 250 MCM CU - Mech. AL	
2	SGDA4	400	3		(2) - 2/0 - 250 MCM CU - Mech. AL	
3	SGDA4	400	3		(2) - 2/0 - 250 MCM CU - Mech. AL	
4	SFHA	200	3		(1) - #8 - 350 MCM CU - Mech. AL	

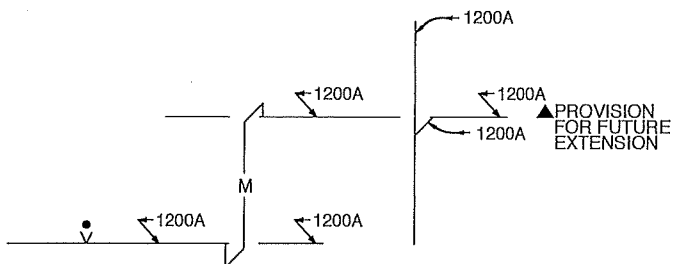
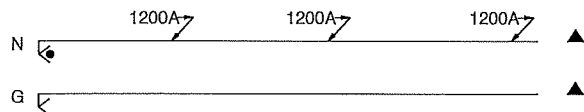
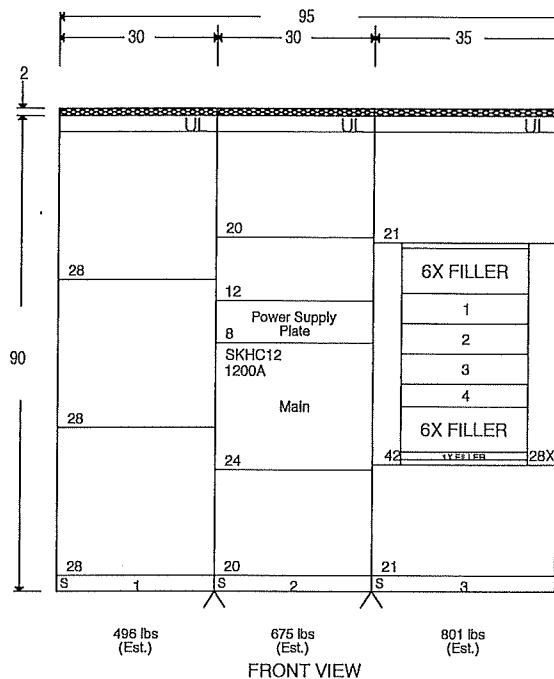
NOTES:

- Switchboard furnished with a rainproof TYPE 3R (non-walk-in) enclosure.
NOTE: See plan view for details. Need additional 2 inch space clearance on top and 1.5 inch clearance on the rear of the swbd.
- Equipment ground bus furnished with lugs.
- Copper ground bus furnished.
- Switchboard qualified for Seismic Ratings per publication DET-463 and OSP-0044-10.
- Switchboard furnished with Nameplates.
- All Nameplates to be fastened with screws.
- Shipping splits between each section, ship each section separately.
- Switchboard furnished with fully rated panel.
- Device furnished with MET (LSI) programmer.
- Device is furnished with RELT (Reduced Energy Let Through).
- Device requires RELT or ZSI feature if Authority having jurisdiction has adopted NEC 2014 code requirements.
- Estimated total factory connected wiring points for the lineup 24.
- Estimated shipping weight for the lineup is 1972 lbs.

PROJECT NAME : Venetia Valley MSB	DWG TITLE: Device Information	CREATED BY: Vincent, Jason	PRODUCT NAME: <i>Spectra Series</i> <i>Switchboard</i>	DRAWING NO:
CUSTOMER: CITY ELECTRIC SUPPLY, SANTA ROSA		CHECKED BY:		ITEM NO: 2
		APPROVED BY:		MARKS: DBIH
		DATE: 4/24/2018 7:28:31 PM		QUOTE NO: UL8-00001336
		REVISION NO.: 2		SHEET: 1 of 3



ACCESS TO: Front Only	PHASE: 3P4W
CLASS: 2	AMPERE: 1200A
LABEL: U/L	BUS MTL: Cu 1000A/in ²
VOLTAGE: 208/120V	PLATE: Silver Plate
STYLE: Bolt-On	RATING: Fully Rated
BUS BRACING (RMS SYM):	65000A
DEV. MIN. INT. RATING (RMS SYM):	30000A



● (5) 500 MCM CU
MECHANICAL (1 HOLE) AL
PER PHASE & NEUTRAL

BUSSING DIAGRAM

PROJECT NAME :
Venetia Valley MSB

CUSTOMER:
CITY ELECTRIC
SUPPLY, SANTA ROSA

DWG TITLE:
Front View/
Bussing

CREATED BY: Vincent, Jason
CHECKED BY:
APPROVED BY:
DATE: 4/24/2018 7:28:31 PM
REVISION NO.: 2

PRODUCT NAME:
Spectra Series™
Switchboard



DRAWING NO:
ITEM NO: 2
MARKS: DBIH
QUOTE NO: UL8-00001336
SHEET: 2 of 3

2.5

3.12

CONDUIT SPACE
(TYPICAL ALL SECTIONS)

.625 DIA
(TYP)

Diagram of the Bottom Conduit Area. The area is 95 units wide and 25 units high. It is divided into three sections: a 30-unit wide section on the left, a 30-unit wide section in the middle, and a 35-unit wide section on the right. The right section contains a rectangular area labeled "Conduit Area 19D x 29W" with a width of 31 units and a height of 31 units. The distance from the right edge of the middle section to the left edge of the conduit area is 3 units, and the distance from the right edge of the conduit area to the right edge of the right section is 3 units. A 5-unit wide section is shown at the bottom left.

PROJECT NAME : Venetia Valley MSB
CUSTOMER: CITY ELECTRIC SUPPLY, SANTA ROSA

CREATED BY:	Vincent, Jason
CHECKED BY:	
APPROVED BY:	
DATE:	4/24/2018 7:28:31 PM
REVISION NO.:	2

PRODUCT NAME:
Spectra Series™
Switchboard



DRAWING NO:	
ITEM NO:	2
MARKS:	DBIH
QUOTE NO:	UL8-00001336
SHEET:	3 of 3