

2016 Creative Connections Arts Academy Charter Renewal Proposal

April 19, 2016

Brian Emerson, Vice Principal

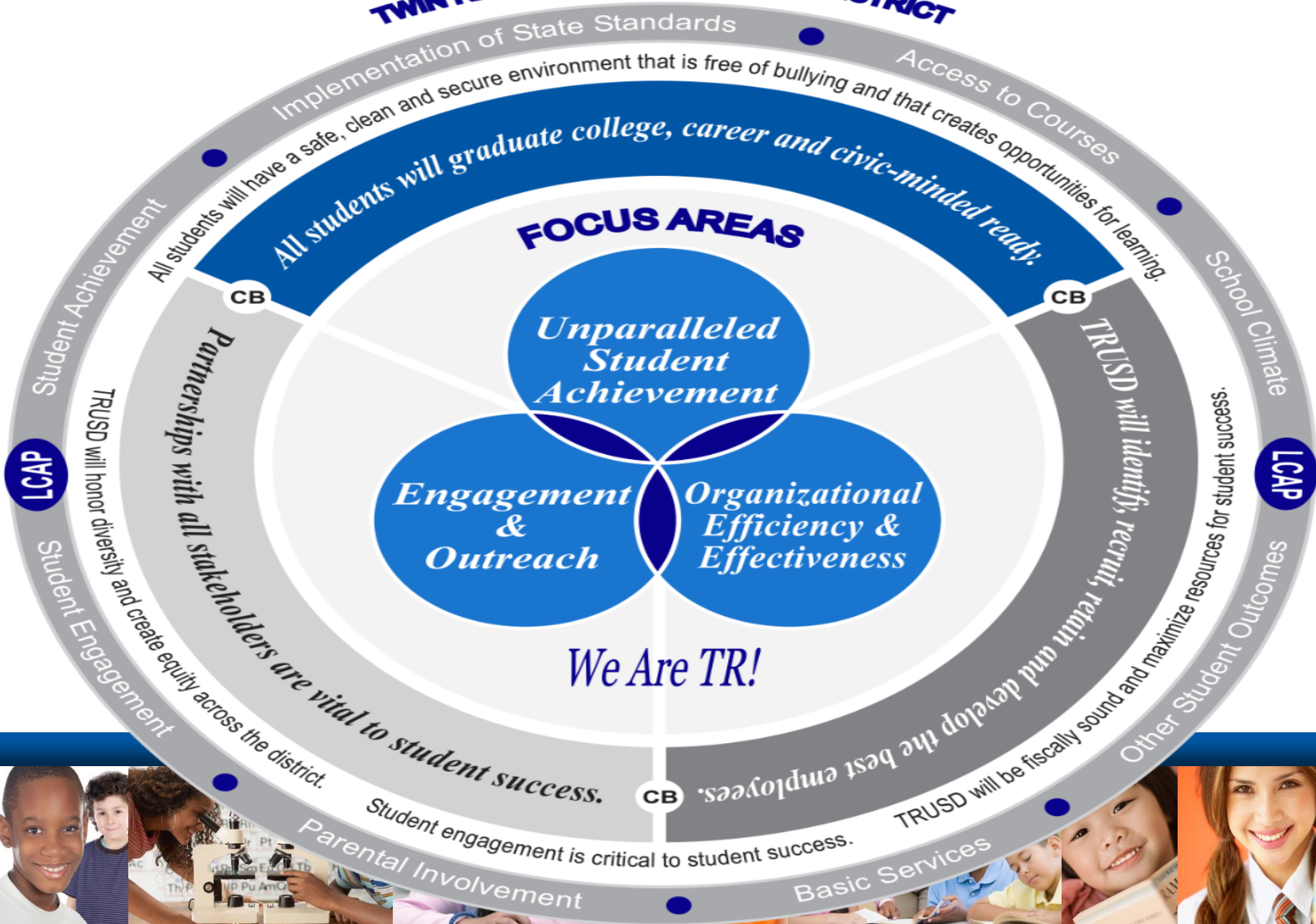
Tina Hughes-Corben, teacher

Geoff Neill and Kris Ward, Parents and SSC members

Twin Rivers Unified School District: *Inspiring each student to extraordinary achievement every day!*



TWIN RIVERS UNIFIED SCHOOL DISTRICT



Twin Rivers Unified School District

We Are TR!

- Safe Learning Environment
- Healthy Families
- Effective Services

SBAC: Summative Assessments

Benchmark assessments

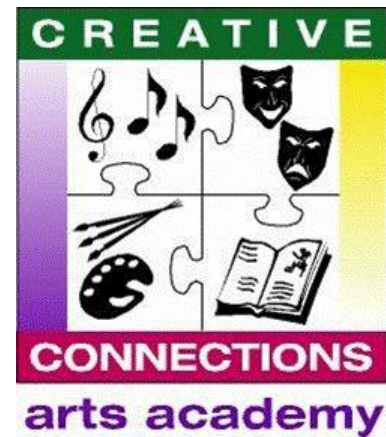
On-going formative assessments in PLCs

Unit development

Creating Conditions for Success



Mission and Vision



Vision Statement:

Creative Connections Arts Academy is a safe environment where we support life-long learning in a creative arts-based community.

Mission statement:

Through a commitment to nurture the whole child, we offer high quality arts integration; we achieve growth and confidence in academic knowledge, leadership, and social action.

Twin Rivers Unified School District: *Inspiring each student to extraordinary achievement every day!*



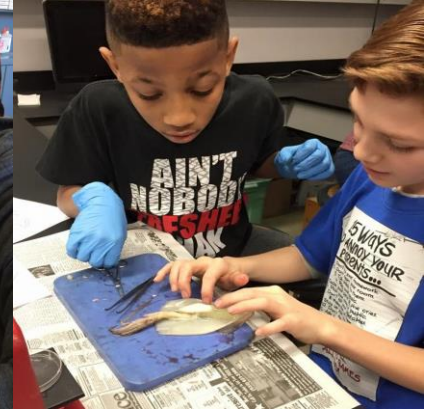
History of CCAA Charter School

- The demand for the arts
- Feb 14, 2005 original petition approved
- opened Aug 2005, Arutas campus
- K-7 program with 5 classes



Twin Rivers Unified School District: *Inspiring each student to extraordinary achievement every day!*





In 2009, CCAA expanded

- Grades 7-8 moved to new campus

August 2010 with grades 7-10

Currently

- K-6 Arutas campus (338)
- 7-12 Walerga campus (267)
- Awarded 6 year WASC accreditation

Twin Rivers Unified School District: *Inspiring each student to extraordinary achievement every day!*



Educational Program

Key components

- The Arts
- Educating the “whole child”
- Family Engagement
- Character Development
- Flexible Scheduling
- Community Service



Twin Rivers Unified School District: *Inspiring each student to extraordinary achievement every day!*



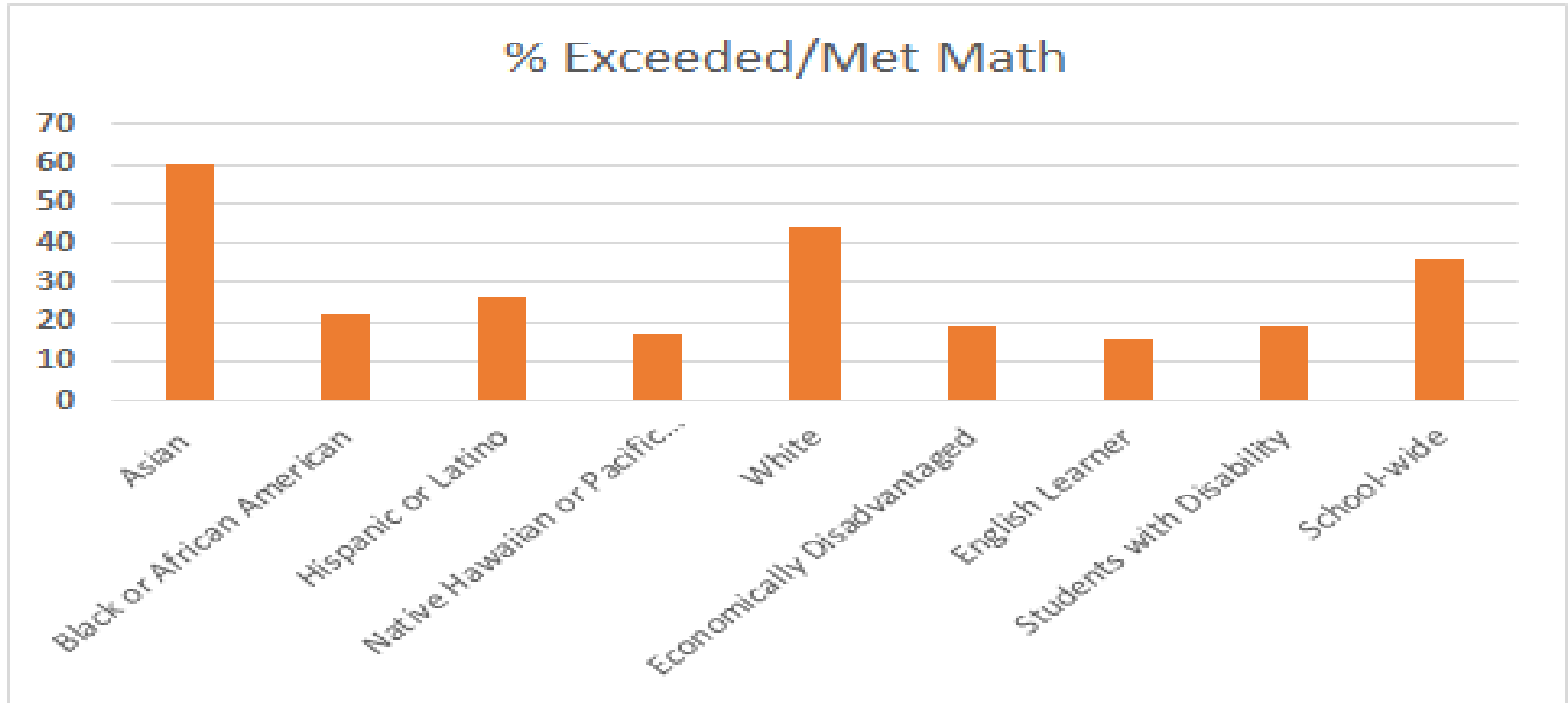
Measurable Student Outcomes

- SBAC Spring 2015 Grades 3-6
 - % Met and Exceeds
 - ELA-43%
 - Math-42%
- SBAC Spring 2015 Grades 7-8
 - % Met and Exceeds
 - ELA-62%
 - Math-43%
- SBAC Spring 2015 Grade 11
 - % Met and Exceeds
 - ELA-69%
 - Math-31%
- CST Science Scores
 - % Met and Exceeds
 - Gr. 5-55%
 - Gr. 8-90%
 - Gr. 10- 52%

Twin Rivers Unified School District: *Inspiring each student to extraordinary achievement every day!*



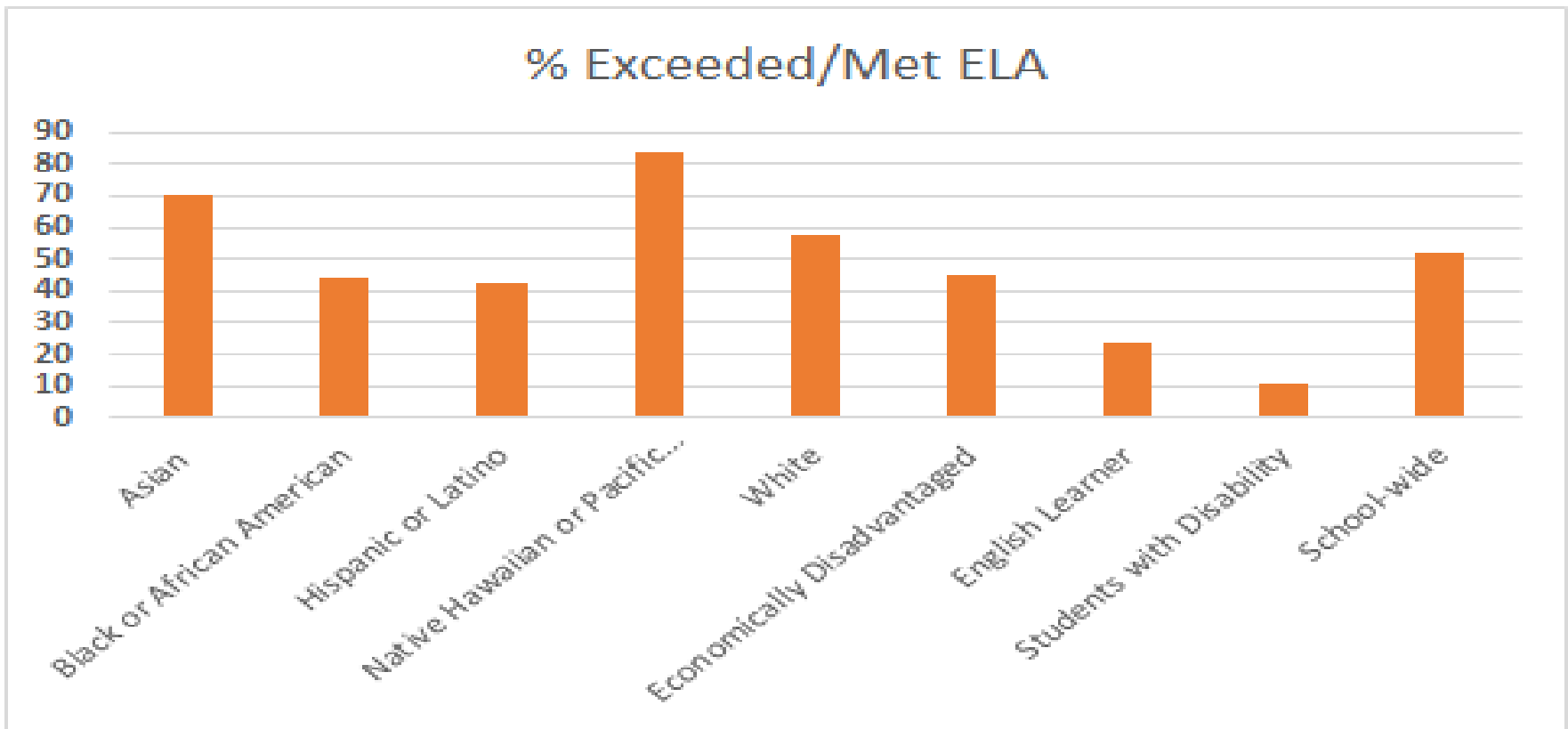
Measureable Student Outcomes



Twin Rivers Unified School District: *Inspiring each student to extraordinary achievement every day!*



Measureable Student Outcomes



Twin Rivers Unified School District: *Inspiring each student to extraordinary achievement every day!*



Measurable Student Outcomes

- Drop out percentage = 0%
- Graduation rate = 100%
- CAHSEE ELA Passing rate as of last year = 100%, overall proficiency rates = 80%.
- CAHSEE MATH Passing rate as of last year = 95%, overall proficiency rates = 70%.
- API Growth Scores were 854 in 2011; 837 in 2012; and 858 in 2013.

Twin Rivers Unified School District: *Inspiring each student to extraordinary achievement every day!*





College Acceptances



Twin Rivers Unified School District: *Inspiring each student to extraordinary achievement every day!*





Strategies and Approaches



- Arts Integration and Performances
- Staff Development
- Project Based Learning
- Exploratory and Electives
- Tribes and Restorative Practices
- Community Service
- Parental Involvement
- Field Study Days
- Artists in Residence, After School Arts Programs

Twin Rivers Unified School District: *Inspiring each student to extraordinary achievement every day!*



Recommendation

We ask that the TRUSD School Board approve
the Creative Connections Arts Academy
Renewal Charter Petition
2016 - June 2021



Twin Rivers Unified School District: *Inspiring each student to extraordinary achievement every day!*



Questions?



Twin Rivers Unified School District: *Inspiring each student to extraordinary achievement every day!*

