



SANTA MONICA-MALIBU UNIFIED SCHOOL DISTRICT

# Bond Program Update

## February 2019

2/7/19

Board of Education Meeting



# Bond Program Update

- Recently Completed Projects
- Ongoing Projects
- Ed Specs, ADA Transition Plan, Sustainability Plan
- Program-wide Facility Assessments
- Malibu Campus Plan
- Samohi Campus Plan
- WPFDD Future Projects
- HVAC Future Projects
- Security Systems and Furniture Upgrades and Replacement

# Completed Projects



## JAMS Field Replacement (ES)

Architect: NAC

Contractor: FieldTurf USA

Contract Amount: \$2,062,441

Change Orders: -\$10,002 | -0.48%

Completed on time.

Closeout underway.



## JAMS Gym Floor Replacement (ES)

Architect: NAC

Contractor: Nazerian

Contract Amount: \$997,123

Change Orders: +\$3,910 | 0.4%

Completed on time.

Closeout underway.

# Completed Projects



## Webster Parking Improvements (BB)

Architect: HMC

Contractor: Waisman Construction

Contract Amount: \$3,207,665

Change Orders: +\$269,017 | 8.4%

Construction delayed by late start.

95% complete. In use, punchlist.



## Point Dume WPF/D/HVAC (ES)

Architect: dsk Architects

Contractor: The Nazerian Group

Contract Amount: \$3,333,123

Change Orders: +\$207,891 | 6.2%

95% Complete, start up pending

Edison transformer replacement.



# Ongoing Projects



## Franklin (ES)

Architect: dsk Architects

Contractor: The Nazerian Group

Contract Amount: \$5,294,123

Change Orders: +\$73,318 | 1.4%

Construction 65% complete.

Material issues, resolution pending.



## McKinley (ES)

Architect: Rachlin Partners

Contractor: USS Cal Builders

Contract Amount: \$6,488,000

Change Orders: +\$239,983 | 3.7%

Construction delayed, 36% complete.

Contractor performance issues.

# Ongoing Projects

## Solar and Prop 39 Lighting Replacements

### Solar Projects (ES)

Design/Build Contractor: PCI, Inc.

### Samohi PV and Battery Storage

Innovation Building Rooftop

139 kW, 240 kWh storage

Contract Amount: \$656,349

Schedule: June-August 2019

### Edison Solar Shade Structures

West of field, two sides of parking lot.

206 kW, no storage

Contract Amount: \$706,709

Schedule: Spring Break and Summer

When complete, Edison will be largest PV array in District.



### Prop 39 Lighting Replacement

Contractor: Baker Electric

Contract Amount: \$2,908,316

Scheduled completion: May 2019

28% energy reduction anticipated, totaling 1.7 million kWh/year, or \$200-300k/year cost savings.

# Ongoing Projects

## Malibu Middle & High School Campus Improvements (BB)



Architect: HMC  
Contractor: McCarthy  
Contract Amount: \$54,241,698  
Change Orders: +\$336,177 | 0.7%  
Construction is going well, but is several months behind schedule due to MDF delays, PCBs, Fires, Floods.





# Ongoing Projects



Olympic Spur (Samohi) (ES)  
Architect: Chan-Young  
Contractor: Ampco Contracting  
Contract Amount: \$1,997,000  
Change Orders: +\$21,600 | 1.1%  
50% complete, delayed until March.  
No impact to Discovery schedule.



Samohi HVAC (ES)  
Architect: Chan-Young  
Contractor: ACCO  
Contract Amount: various ~\$350,000  
Change Orders: +~\$60,000 | ~20%  
Unforeseen conditions, inoperable  
Fire Alarm equipment.



# Ongoing Projects



## Maple Street Demo (ES)

Architect: Struerre

Contractor: Chalmers Construction

Contract Amount: \$480,000

Changes: Landscape and Paving.

12% complete, on schedule.

Abatement underway.



## Lincoln Track/Field Replacement (ES)

Architect: DLR

Contractor: Angeles Constructors

Contract Amount: \$4,092,000

Change Orders: -\$43,298 | -1.1%

Completed 6 months late.

Ongoing drainage issues.

# Ongoing Projects

## Discovery Building New Construction (ES)



- Open Concept
- M and O Houses
- 38 Classrooms
- Common Areas
- Kitchen and Dining
- Parking for 184 Cars
- Multipurpose Rooms
- Rooftop Classroom
- Olympic Sized Pool

Architect: HED/MRY  
Contractor: McCarthy  
Contract Amount: Pending.  
Preliminary services awarded 2/7/19.  
Shoring to start this Spring,  
construction to start this Summer.





# District-wide Processes (ES)

## DISTRICTWIDE PLAN FOR SUSTAINABILITY

*SANTA MONICA – MALIBU UNIFIED SCHOOL DISTRICT | JANUARY 2019*



CLIMATE



EDUCATION + ENGAGEMENT



ENERGY EFFICIENCY + RENEWABLE



WATER



SOLID WASTE



TRANSPORTATION



FOOD, NUTRITION + WELLNESS



GREEN BUILDING + OPERATIONS





# District-wide Processes (ES)

## Sustainability Plan



# District-wide Processes (ES)

## ADA Transition Plan

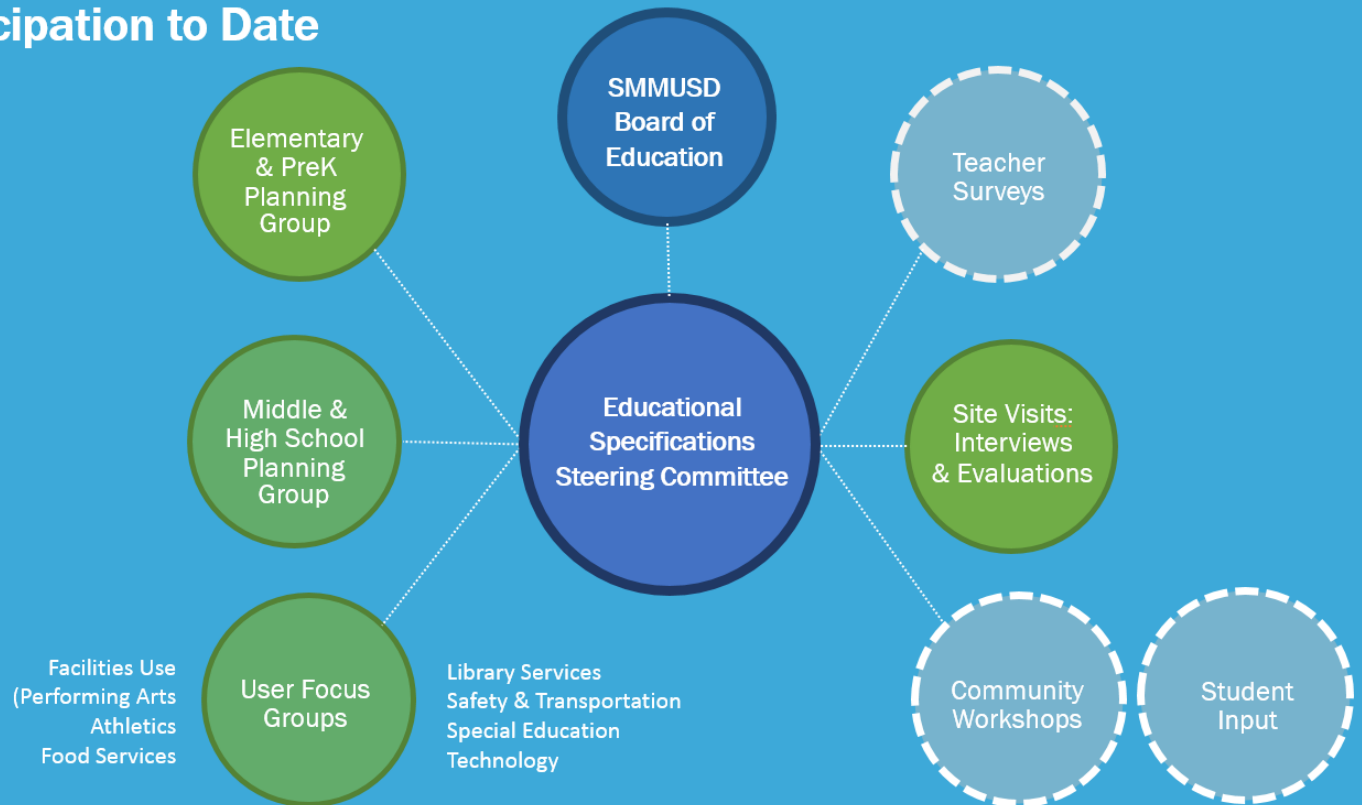


# District-wide Processes (ES)

## Educational Specifications

Santa Monica – Malibu Unified School District

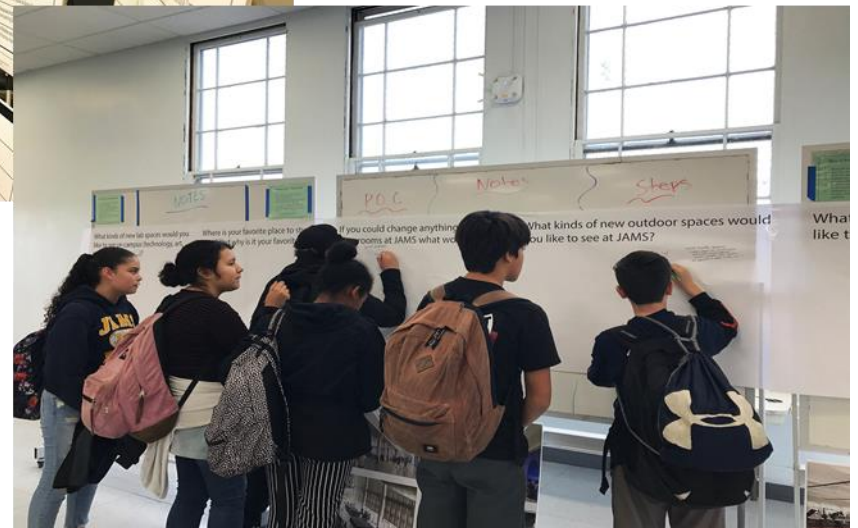
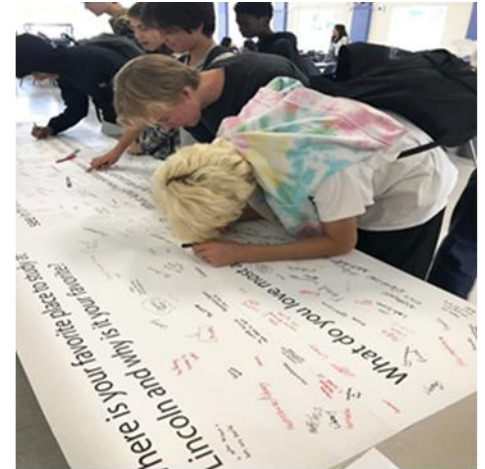
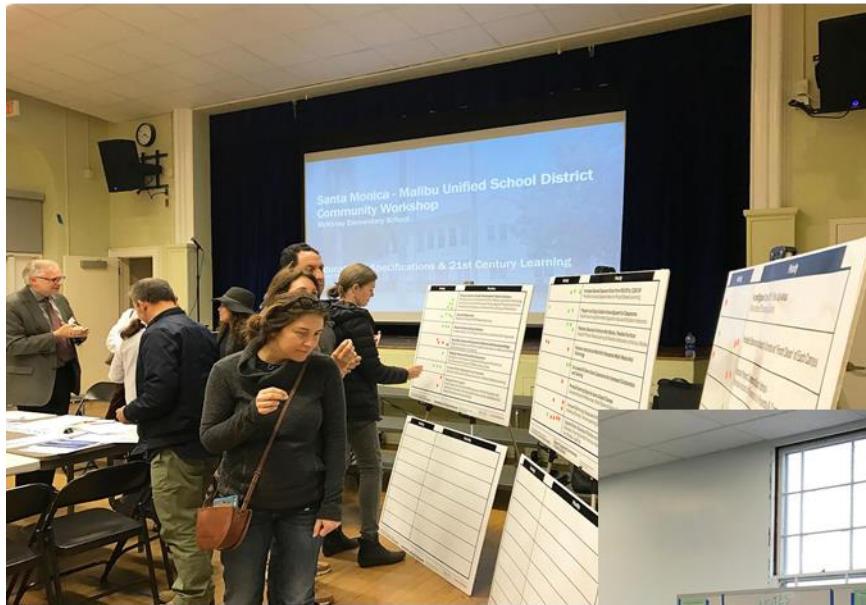
### Participation to Date





# District-wide Processes (ES)

## Educational Specifications

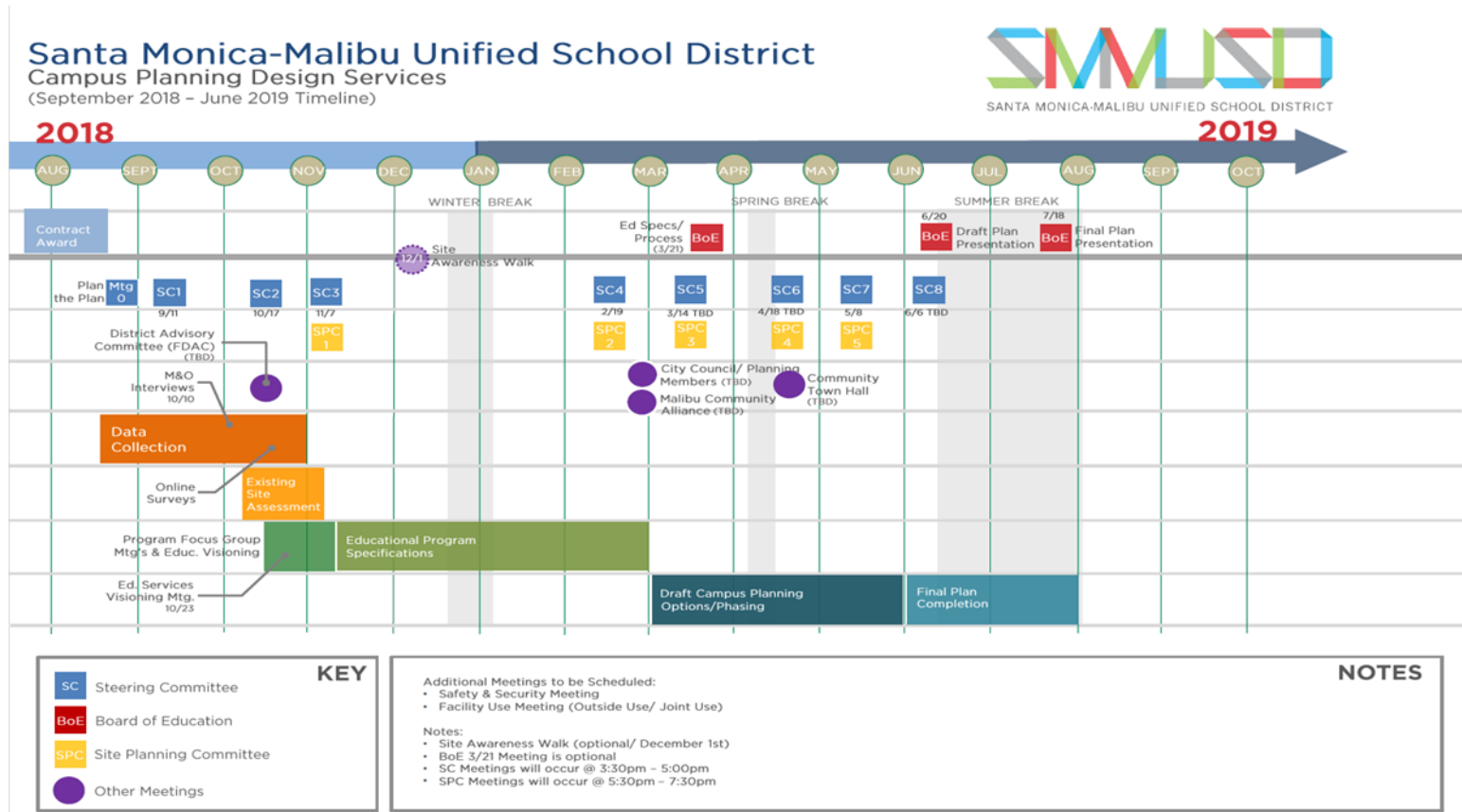


# Program-wide Facility Assessments (M & SMS)



# Malibu Campus Plan (M)

LPA has been hired as the Campus Plan Architect.  
Steering Committee meetings are underway.  
Process has been paused due to fires and recovery.  
Aggressive schedule.





# Samohi Campus Plan (ES/SMS)

- Final EIR on Agenda Tonight.
- Approval of Discovery Building (Phase 1&2) Contractor Tonight.
- Re-evaluation at each phase regarding changes in population/educational needs.
- FIP conducts regular meetings with Samohi Facilities Site Committee regarding Discovery Building and the Samohi Campus Plan, as well as ongoing minor projects.
- Procurement of Phase 3 architect will begin this Spring.

Phase	Anticipated Demolition Date	Anticipated Building Occupancy Date
1 & 2	Summer 2018	Winter 2022
3	Summer 2023	Spring 2024
4	Summer 2024	Spring 2027
5	Summer 2027	Spring 2031
6	Summer 2031	Spring 2035
7	Summer 2039	Summer 2043
8	Fall 2043	Fall 2045
9	Fall 2045	Fall 2047





# Upcoming Projects (M & SMS)

## ■ Elementary Schools

- Webster HVAC
- Rogers HVAC
- Grant HVAC
- Roosevelt HVAC
- Muir/Smash HVAC
- Muir/Smash WPF



# Upcoming Projects (SMS)

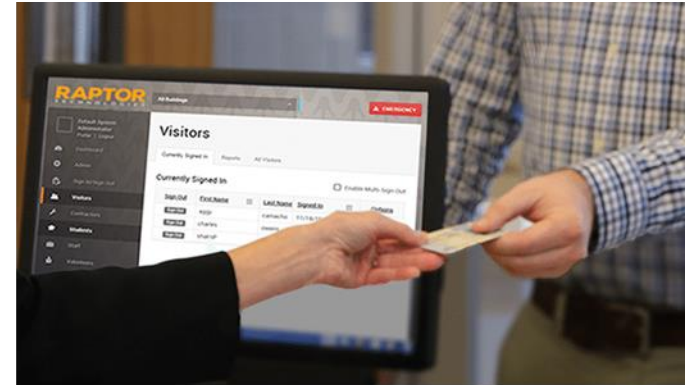
## ■ Middle Schools

- JAMS WPFD
- Remaining JAMS HVAC
- Lincoln WPFD
- Lincoln HVAC
- Lincoln Theater Improvements
- Malibu Middle School is addressed in Malibu Campus Plan



# Security & Furniture (M & SMS)

ID Checks and  
Cameras (2/21/19)



Electronic Locks and  
Fences (3/7/19)

21<sup>st</sup> Century  
Furniture





# Bond Program Update

## Questions?