

Traffic Study

Traffic Infusion on Residential Environment (TIRE) Index Methodology

The TIRE index is a tool that measures the residents' perception of the effect of increased Average Daily Traffic (ADT) on residential streets. TIRE index values range from 0.0 to 5.0 depending on daily traffic volume. An index of 0.0 represents the least infusion of traffic and 5.0 the greatest, and, thereby the poorest residential environment. A TIRE index of 3.0 represents the threshold at which the character of a residential street changes. Residential streets with a TIRE index above this mid-range point of 3.0 typically exhibit higher traffic volumes. According to this methodology, an impact occurs on the residential street when the difference in index between no project and project conditions is 0.10 or more.

Table 11 – TIRE Index Summary

Street Segment	Alternative 0 (Existing Condition)		Volume Needed to Cause +0.1 Increase in TIRE Index	Alternative 3			Alternative 6		
	ADT	TIRE Index		Change from Existing	Total ADT	Significant Impact	Change from Existing	Total ADT	Significant Impact
Rincon Ave between Dot Ave and Winchester Blvd	1,242	3.1	290	56	1,298	No 3.1	902	2,144	Yes 3.3
Cherry Ln between California St and Winchester Blvd	964	3.0	220	676	1,640	Yes 3.2	168	1,132	No 3.1
California St between Cherry Ln and Budd Ave	943	3.0	220	450	1,393	Yes 3.1	112	1,055	No 3.0

Notes: ADT = Average Daily Traffic; **Bold** = Significant Impact.

Alternative 6- Onsite Improvement

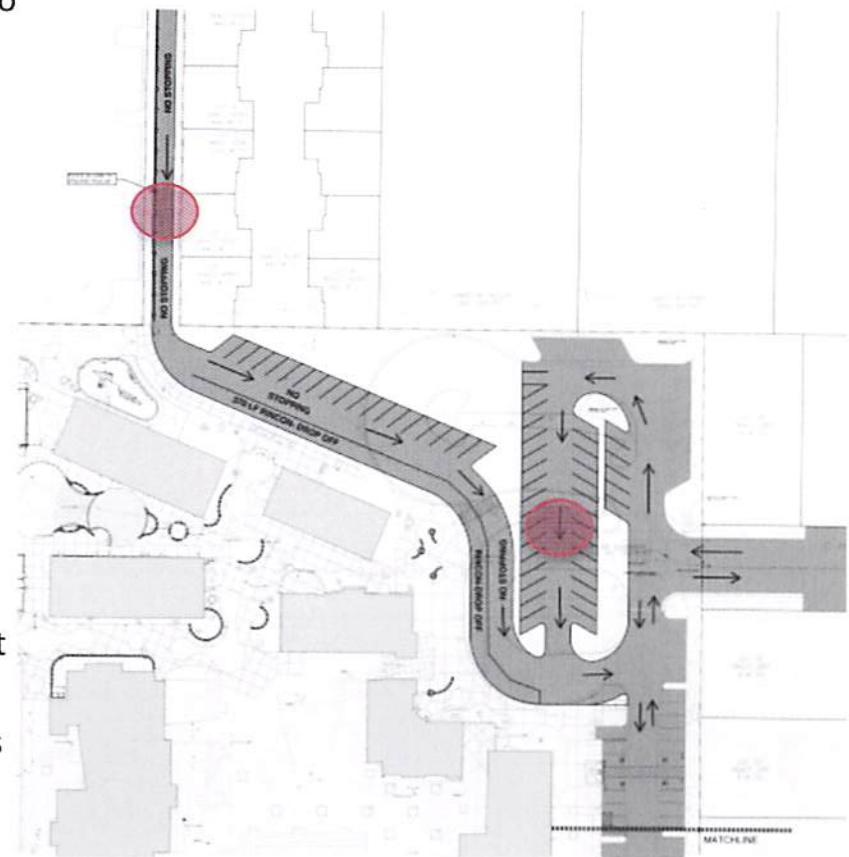
Rincon Ave Entrance Drop-Off, Cherry Lane Entrance Parking lot/Exit

Pros:

- Visitor parking and Drop off parking stalls increase from 31 to **70** stalls.
- Staff Parking increases from 44 to **66** stalls
- Parent Drop off lane length increases from existing 260 LF to **370** LF
- Drop off lane student visibility is improved over existing condition.
- On-site car storage increases from existing 238 LF to **332** LF

Cons:

- All curb side Drop off traffic would need to enter from the Rincon Entrance.
- With no drop-off lane for those entering from Cherry its possible some families may allow their student to exit the vehicle within the parking stall areas which creates a student safety concern.
- A potential for non school related traffic to utilize the site as a short cut exists.
- If a gate is installed at the Rincon entrance, access to nearly half of the layout would be restricted during times when the gate is closed. Internal circulation options are very limited. This may be a future issue if the gate is broken or mistakenly locked at any point in the future.



Estimated Cost : \$1.45 MIL

48,600 SF @ \$30/SF