



**SANTA ROSA
CITY SCHOOLS**

Santa Rosa City Schools 2018-2019 E-Rate Update

MARCH 27, 2019

E-Rate Funding Overview

E-Rate is a federal program that provides funding to Districts in the following Areas:

- ▶ Category 1:
 - ▶ Services that enable Broadband connectivity to the school (ex. Internet Service, Fiber Connections for Wide-Area-Network (WAN))
- ▶ Category 2:
 - ▶ Services that enable Broadband connectivity within the school (ex. Wireless Access, Network Equipment, Network Cabling)
- ▶ Discounts are based on the free/reduced lunch percentage

E-Rate Funding Process

- ▶ Requests for Proposals (RFPs) are posted
- ▶ Bids are received & reviewed
- ▶ Vendor is selected
- ▶ Application is submitted
- ▶ Schools wait for approval

Current Internet and Wireless Usage

- ▶ Devices
 - ▶ 11,000+ Devices served everyday on the Wireless Network
 - ▶ 12,000+ Student Devices that could concurrently use the Wireless Network
 - ▶ 2,000+ Devices on the Wired Network
- ▶ WAN
 - ▶ Top HS WAN connections utilization 85% of 1Gbps at peak hours
 - ▶ Top MS WAN connections utilization 70 % of 1Gbps at peak hours
 - ▶ Top ES WAN connections utilization 90 % of .5Gbps at peak hours
- ▶ Internet
 - ▶ SCOE Internet connection 10Gbps – 35% at peak hours
 - ▶ SonicNet Internet connections 5Gbps – limited to 20% due to WAN connection to EAHS

SRCS E-Rate Historical Data

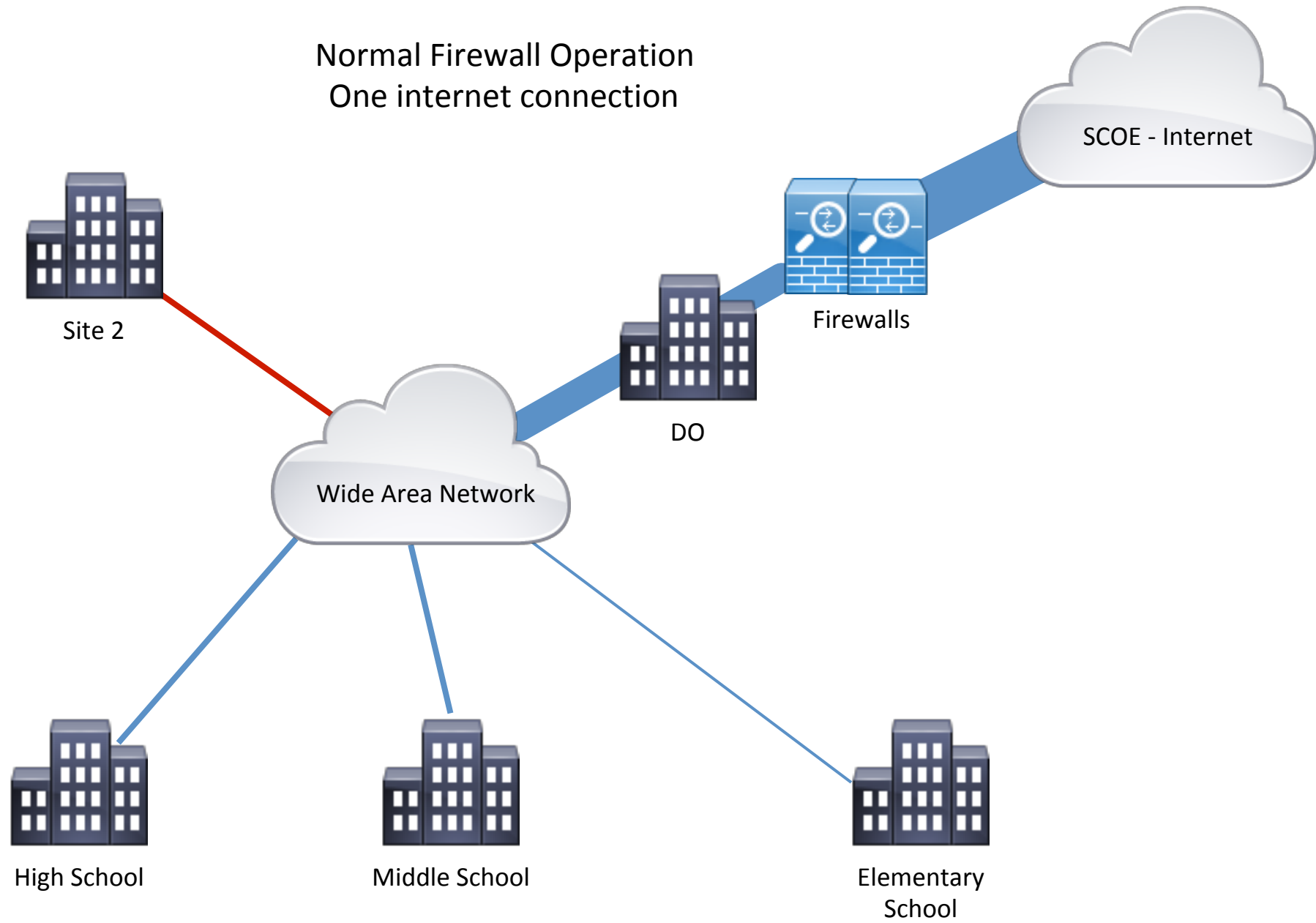
Year	Total committed amount:	Discount Percentage
1998	\$317,532.31	58%
1999	\$156,184.43	56%
2000	\$147,528.60	53%
2001	\$165,001.95	52%
2002	\$134,840.35	52%
2003	\$289,157.12	85%
2004	\$293,423.19	71%
2005	\$236,827.27	67%
2006	\$243,621.55	70%
2007	\$289,276.86	66%

Year	Total committed amount:	Discount Percentage
2008	\$385,874.69	57%
2009	\$352,870.24	58%
2010	\$386,569.33	63%
2011	\$412,757.63	63%
2012	\$412,350.88	64%
2013	\$386,236.31	62%
2014	\$525,239.03	65%
2015	\$527,106.81	65%
2016	\$518,974.20	40%
2017	\$323,219.00	60%
2018	\$430,958.78	80%

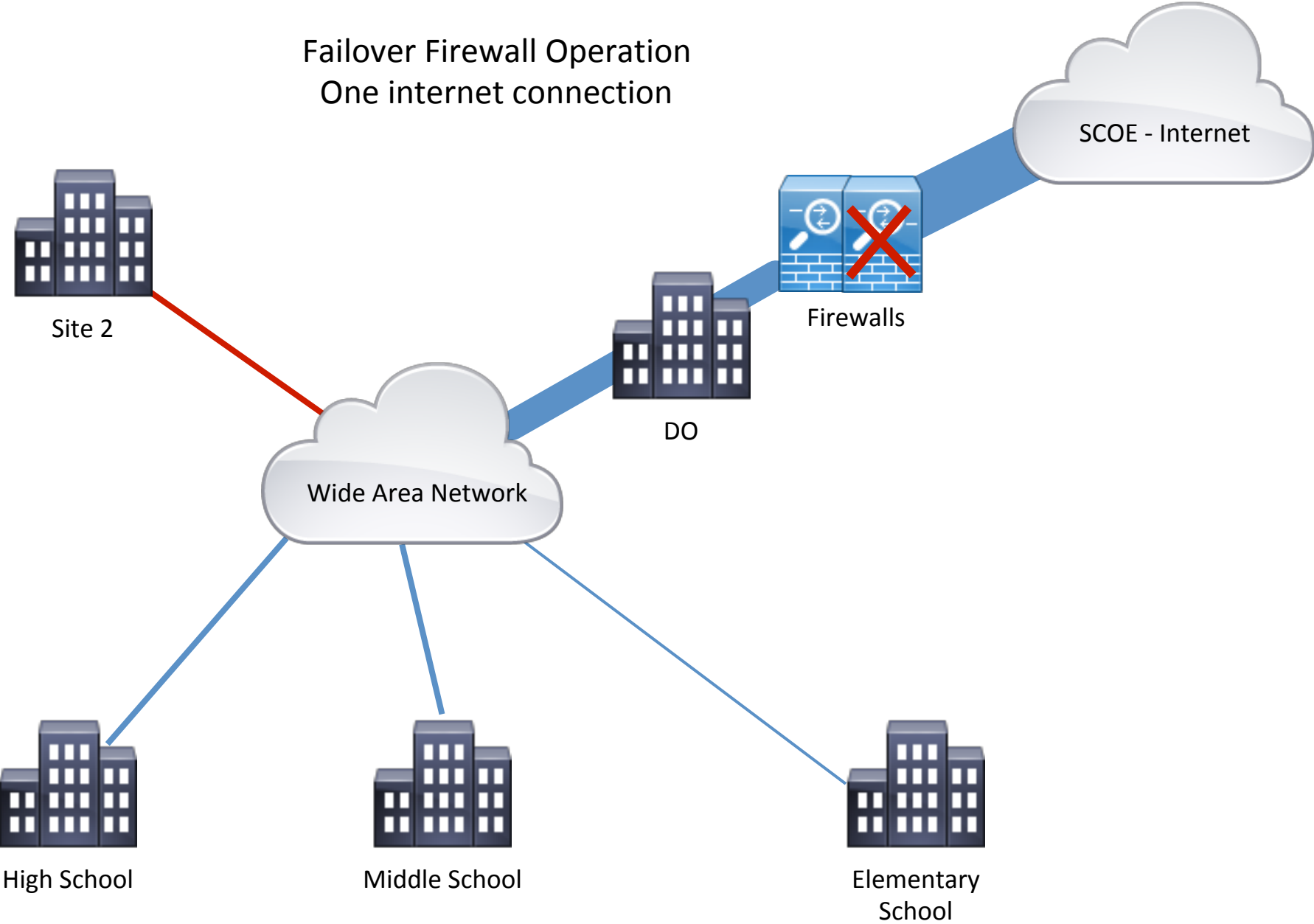
E-Rate Projects - Funding years 2018-19

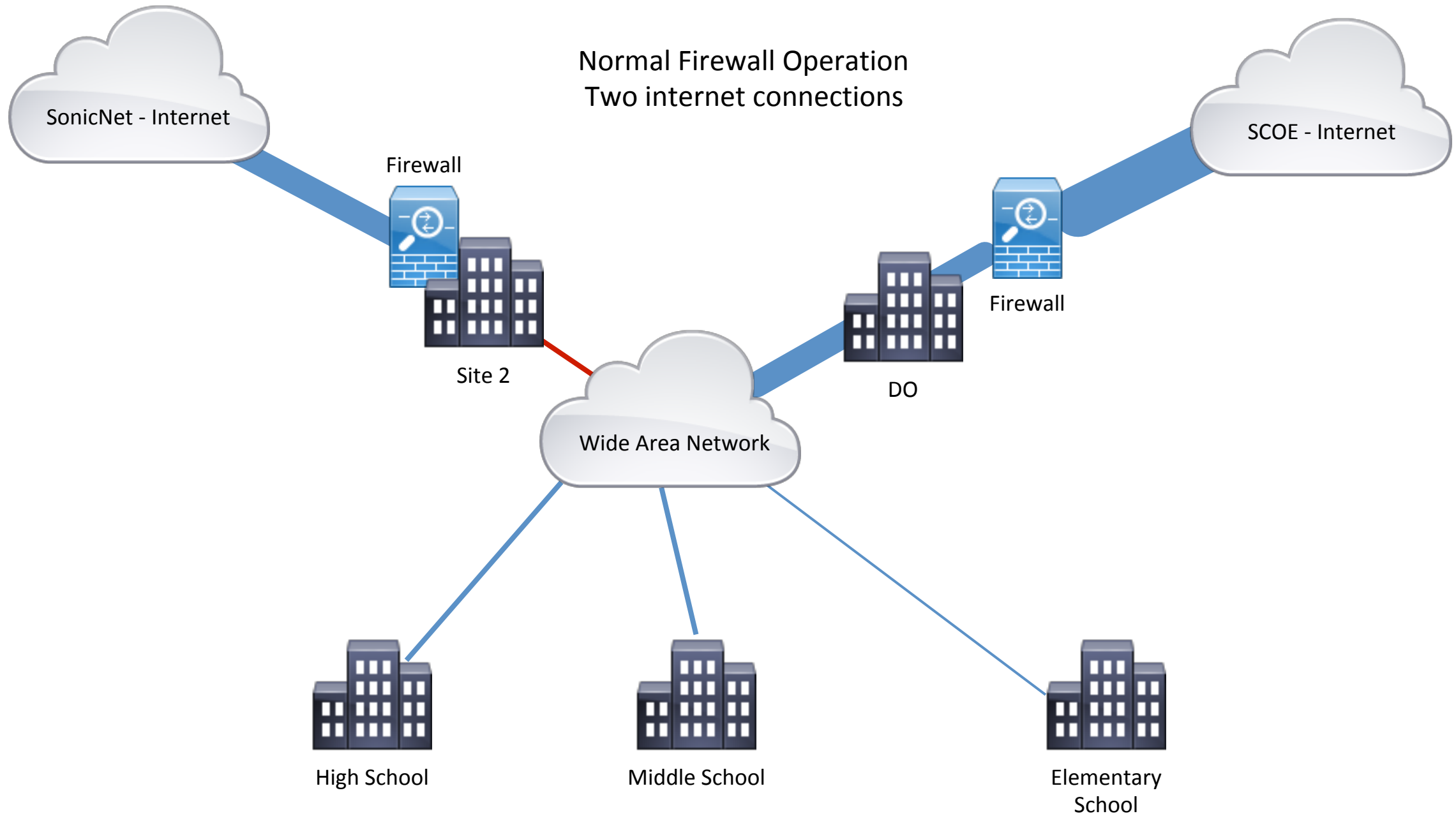
- ▶ Category 1 Projects:
 - ▶ Two firewalls installation (RFP)
 - ▶ WAN circuit upgrade from 1Gbps to 5Gbps (expansion of existing AT&T E-Rate contract)
- ▶ Category 2 Projects:
 - ▶ One hour up-time Uninterruptible Power Supply solution for the Data Center (RFP)

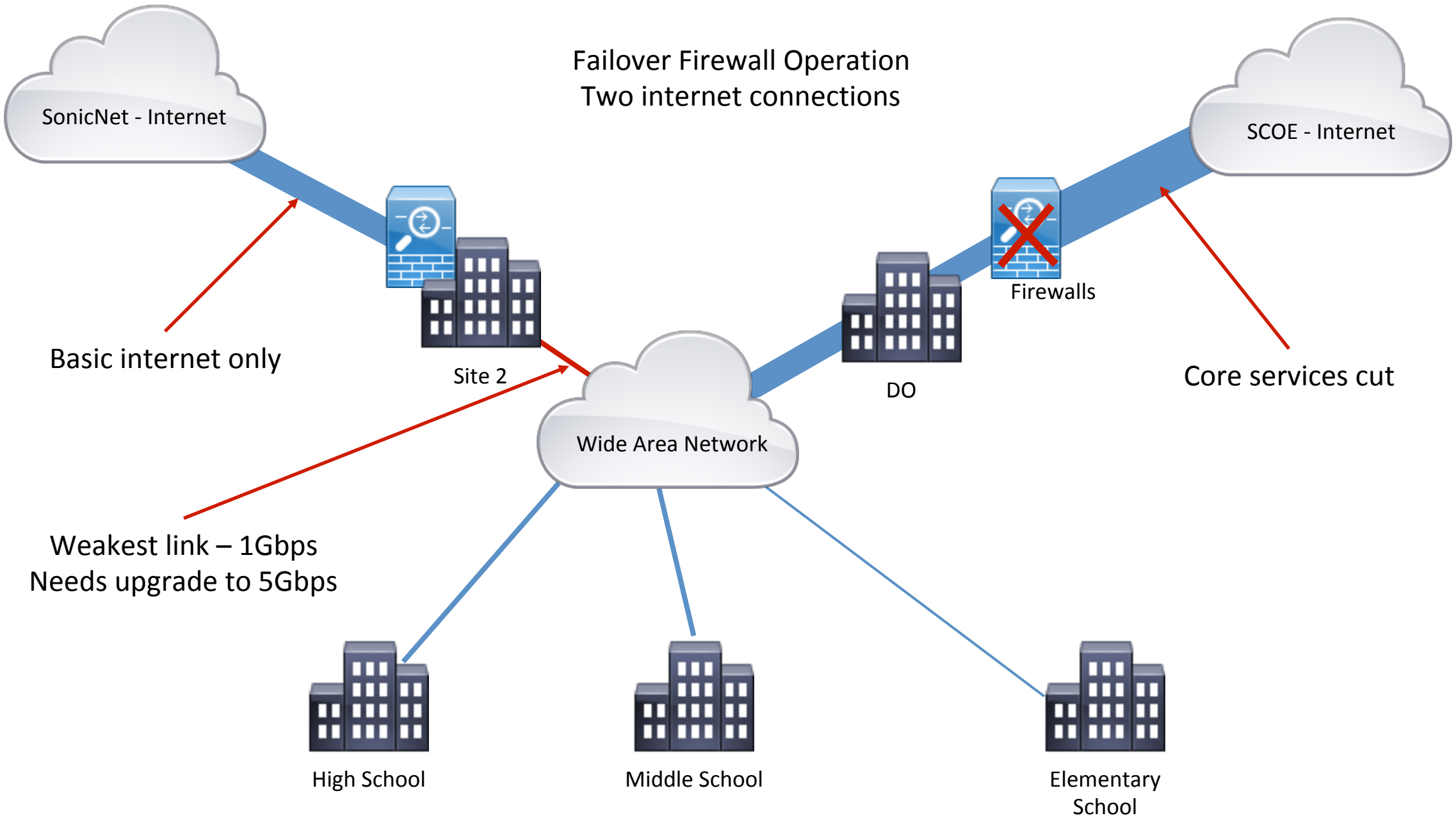
Normal Firewall Operation
One internet connection

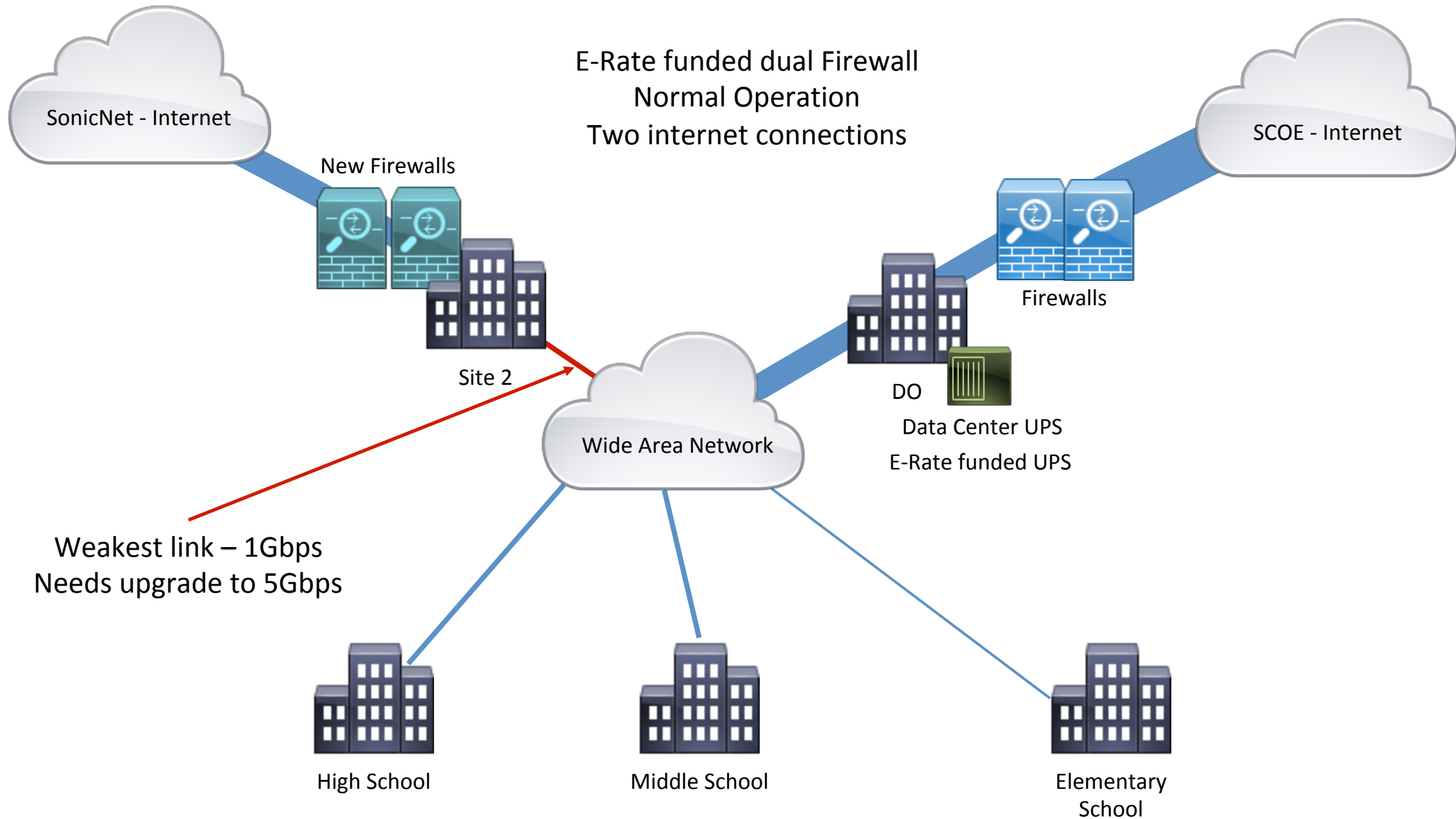


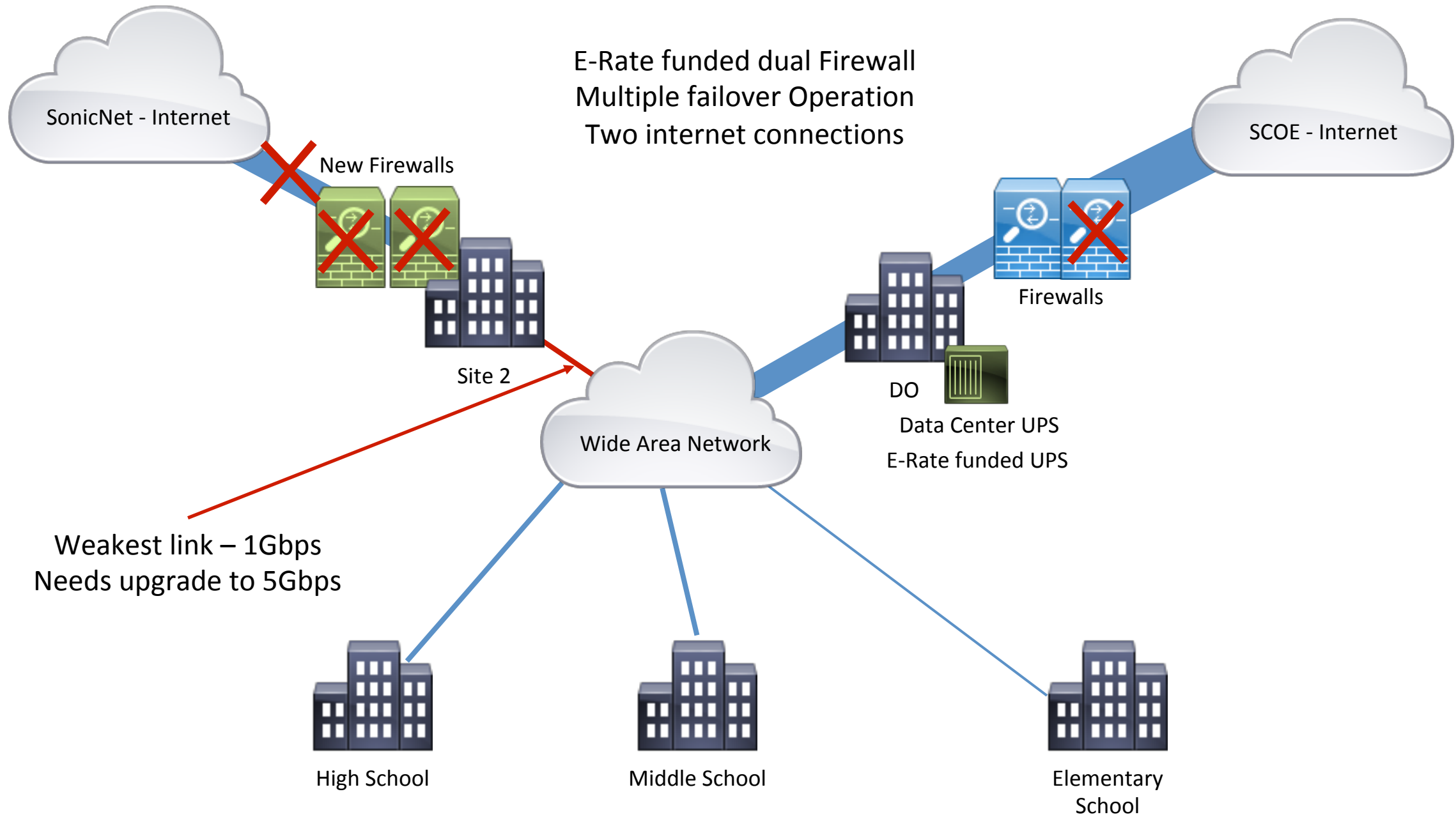
Failover Firewall Operation
One internet connection











E-Rate Projects - Equipment

Costs before E-Rate discounts applied:

Firewalls : \$696,145.38
UPS : \$65,150.03
Total : \$761,295.41

E-rate discounts:

E-Rate discount for Firewalls : \$302,657.75
E-Rate discount for UPS : \$39,090.02
Total E-Rate discount : \$341,747.77

Totals:

Total Before E-Rate Discount : \$761,295.41
Total E-Rate Discount : \$341,747.77
Total after E-Rate discount : \$419,547.64

Costs distribution: \$419,547.64

- ▶ Measure I : \$293,683.35 (70%)
- ▶ Measure L : \$125,864.29 (30%)

E-Rate Projects – WAN Circuit

Monthly fee before E-Rate discounts applied : \$2693.76

E-rate discounts : \$1616.26

Monthly fee before E-Rate discounts applied : \$1077.50

Questions