



SANTA MONICA-MALIBU UNIFIED SCHOOL DISTRICT

Bond Program Update

August 2019

8/1/19

Board of Education Meeting



Bond Program Update

- Ongoing Projects
- Upcoming Projects
- Program-wide Facility Assessments
- Malibu Campus Plan
- Samohi Campus Plan

Ongoing Projects



Malibu Elementary Alignment Project

Architect: dsk Architects

Contractor: Waisman Construction

Contract Amount: \$2,425,000

Change Orders: +\$95,162 | 3.9%

Portable Lease: \$1,168,760

Construction delayed by slow approvals and several field issues.

Approximately 85% complete.

On target to open August 2019.



Webster Elementary K Yard

Architect: dsk Architects

Contractors: FieldTurf, USA Shade, Ecobuild

Contracts: \$507,327

Change Orders: Expected \$45,000

B Playground 100% complete,

H Playground 95% complete.

Minor work remaining, on target to open August 2019.

Ongoing Projects

Samohi Discovery Building (ES)

- Contract Awarded June 2019
- Shoring and Excavation Complete
- $\frac{3}{4}$ of Footings Complete (1,800 c.y. of concrete)
- Walls and Columns Underway
- Water Line Construction Underway (Science Quad and Centennial Quad)
- Concrete Structure Scheduled for November 2019 Completion, Followed by Structural Steel

Building Details:

- Open Concept
- M and O Houses
- 38 Classrooms
- Common Areas
- Kitchen and Dining
- Parking for 184 Cars
- Multipurpose Rooms
- Rooftop Classroom
- Olympic Sized Pool



Ongoing Projects



Discovery Building (ES)

Architect: HED and MRY

Contractor: McCarthy

Lease-Leaseback Delivery Method

Contract Amount: \$133,783,751

Change Orders: 1 Pending, +\$400k

Scheduled to Open January 2022.

Under Construction, On Schedule.



Ongoing Projects



Olympic Spur (Samohi) (ES)

Architect: Chan-Young Architects

Contractor: Ampco Contracting

Contract Amount: \$1,997,000

Change Orders: +\$239,994 | 12%
90% complete, delayed until August.

Building siding and roofing
underway. Gates underway. No
impact to Discovery schedule.



Samohi HVAC (ES)

Barnum, Music, Admin, North Gym

Architect: Chan-Young Architects

Contractor: Pardess Air

Contract Amount: \$1,372,000

Change Orders: +\$224,126 | 16.3%

Unforeseen Conditions. Tight
schedule, but anticipated to be
complete before the start of school.

Ongoing Projects

Miscellaneous Samohi Projects (ES)

Electronic Access Controls – Barnum and Music Building (\$197,368.92)

- Pilot project awarded and underway, intrusive work to be done this summer.
- Door hardware installation to be completed during Fall semester.

Perimeter Security Cameras

- Procurement underway.

Michigan Gate and Fence (\$299,110.50 – added to Nazerian Contract)

- Extending decorative fencing from Michigan to English Building.
- Will add motorized rolling gate at Michigan vehicular entrance.
- Posts and grading to be completed in summer, panels during Fall semester.

Track Replacement (\$345,335 – 0 change orders)

- Completed ahead of schedule, open for use July 10, 2019.
- The track is now blue, and has been generally well received.



Ongoing Projects



JAMS Performing Arts Center (ES)

Architect: HGA

Contractor: Bernards

Lease-Leaseback Delivery Method

Contract Amount: \$34,039,250

1 Corrective Amendment Pending.

Scheduled to Open January 2021.

Under Construction, Delayed Start.



Ongoing Projects



JAMS HVAC Phase 1 (ES)

Architect: NAC

Contractor: Novus

Contract Amount: \$3,990,000

Change Orders: +\$163,197 | 4.1%

Construction 80% complete.

HVAC expected to be operational for 19/20 school year.



JAMS HVAC Phase 2 (SMS)

Architect: NAC

Contractor: Pardess Air

Contract Amount: \$3,126,000

Change Orders: N/A

Construction 0% complete.

Preconstruction meeting held today.

Ongoing Projects



Washington/PDLC WPFD & HVAC (ES)

Architect: dsk Architects

Contractor: The Nazerian Group

Contract Amount: \$2,494,123

Change Orders: 2% pending.

Construction 60% complete.

Preschool will open for 19/20 year.

PDLC on schedule to reopen in Fall.



Michelle and Barack Obama Center for Inquiry and Exploration

Architect: dsk Architects

Contractor: The Nazerian Group

Contract Amount: \$3,474,123

Change Orders: 3.5% pending.

Construction 90% complete.

PPBL will be in renovated
classrooms for 19/20 year.

Michelle and Barack Obama Center for Inquiry and Exploration

Before



After



Ongoing Projects



Franklin (ES)

Architect: dsk Architects

Contractor: The Nazerian Group

Contract Amount: \$5,294,123

Change Orders: +\$472,652 | 8.9%

Construction 65% complete.

Low level PCBs in concrete abated and encapsulated. Material issues (glass), resolution pending.



McKinley (ES)

Architect: Rachlin Partners

Contractor: USS Cal Builders

Contract Amount: \$6,488,000

Change Orders: +\$361,725 | 5.6%

Construction delayed, 55% complete.

School anticipated to be ready for school opening.

Ongoing Projects



MMHS Campus Improvements (BB)

Architect: HMC

Contractor: McCarthy

Contract Amount: \$54,241,698

Change Orders: +\$3,305,907 | 6.1%

Construction is going well, but still several months delayed due to MDF delays, PCBs, Fires, Floods.

The Santa Monica-Malibu Unified School District
Board of Education and Superintendent
invite you to the *Ribbon Cutting* ceremony of the new
Malibu Middle School Classroom Building

Tuesday,
August 13, 2019
12:30 pm



30215 Morning View Drive
Malibu

Parking is available in the upper lot off Morning View Drive accessed through the southern entrance of the Malibu High School campus.*



Join us to celebrate the opening of the new Malibu Middle School state-of-the art, sustainable, classroom building that will be enjoyed by students, teachers and staff for years to come!

- ♦ Tour a new classroom!
- ♦ Light refreshments will be served.
- ♦ Parking is available in the upper lot off Morning View Drive. A significant stairway down to the event location is required. Please include in your RSVP if accessible parking is needed and we will make arrangements.
- ♦ Please watch street parking signs for any parking restrictions.
- ♦ Malibu Middle School is on the Malibu High School campus.

Please RSVP: Gail Pinsker, SMMUSD, gpinsker@smmUSD.org.



The Malibu Middle School project was funded through Measure ES and is managed by the SMMUSD Facility Improvement Projects department.



Ongoing Projects



Ongoing Projects

MMHS Campus Improvements (BB)

- Building E
 - Dedication ceremony scheduled for August 13, 2019.
 - Fire-water connection delay with LA County Water Works.
 - Elevator construction is delayed, still underway.
 - Finishes and furniture delivery underway.
 - Selective overtime and Saturday work approved to reduce delay impacts.
- Building A
 - Structural steel installation underway, vertical concrete walls are in place.
 - Slab on grade has been poured, second floor decking to be placed in August.
 - Morning View Drive widening: ongoing design approvals underway.
 - Coastal Commission approval received for roofing changes (solar).
 - Some issues recently with lack of labor available for the project.
 - Selective overtime and Saturday work approved to reduce delay impacts.



Ongoing Projects

Solar and Prop 39 Lighting Replacements

Solar Projects (ES)

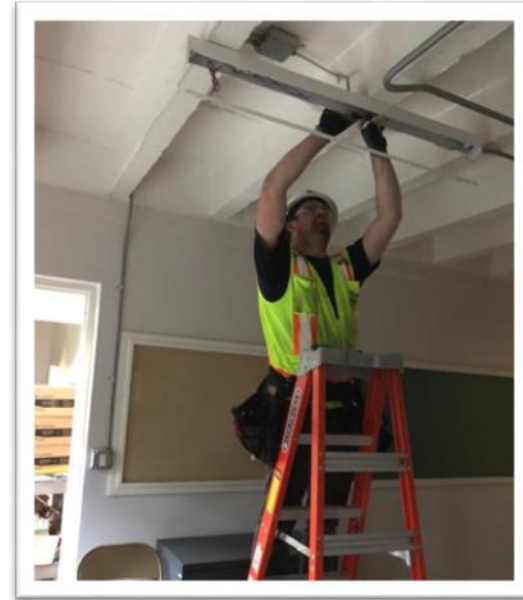
Design/Build Contractor: PCI, Inc.

Samohi PV and Battery Storage

Innovation Building Rooftop
Redesign Underway.

Edison Solar Shade Structures

Redesign Underway.



Prop 39 Lighting Replacement

Contractor: Baker Electric

Contract Amount: \$2,908,316

Completed: Summer 2019

28% energy reduction anticipated,
totaling 1.7 million kWh/year, or
\$200-300k/year cost savings.



Upcoming Projects (M & SMS)

■ Elementary Schools

- Webster HVAC (Summer 2020)
- Grant HVAC (Summer 2020)
- Muir/Smash HVAC (Summer 2020)
- Muir/Smash WPFD (Summer 2020)
- Roosevelt HVAC (Summer 2021)
- Rogers HVAC (Summer 2021)



Upcoming Projects (SMS)

■ Middle Schools

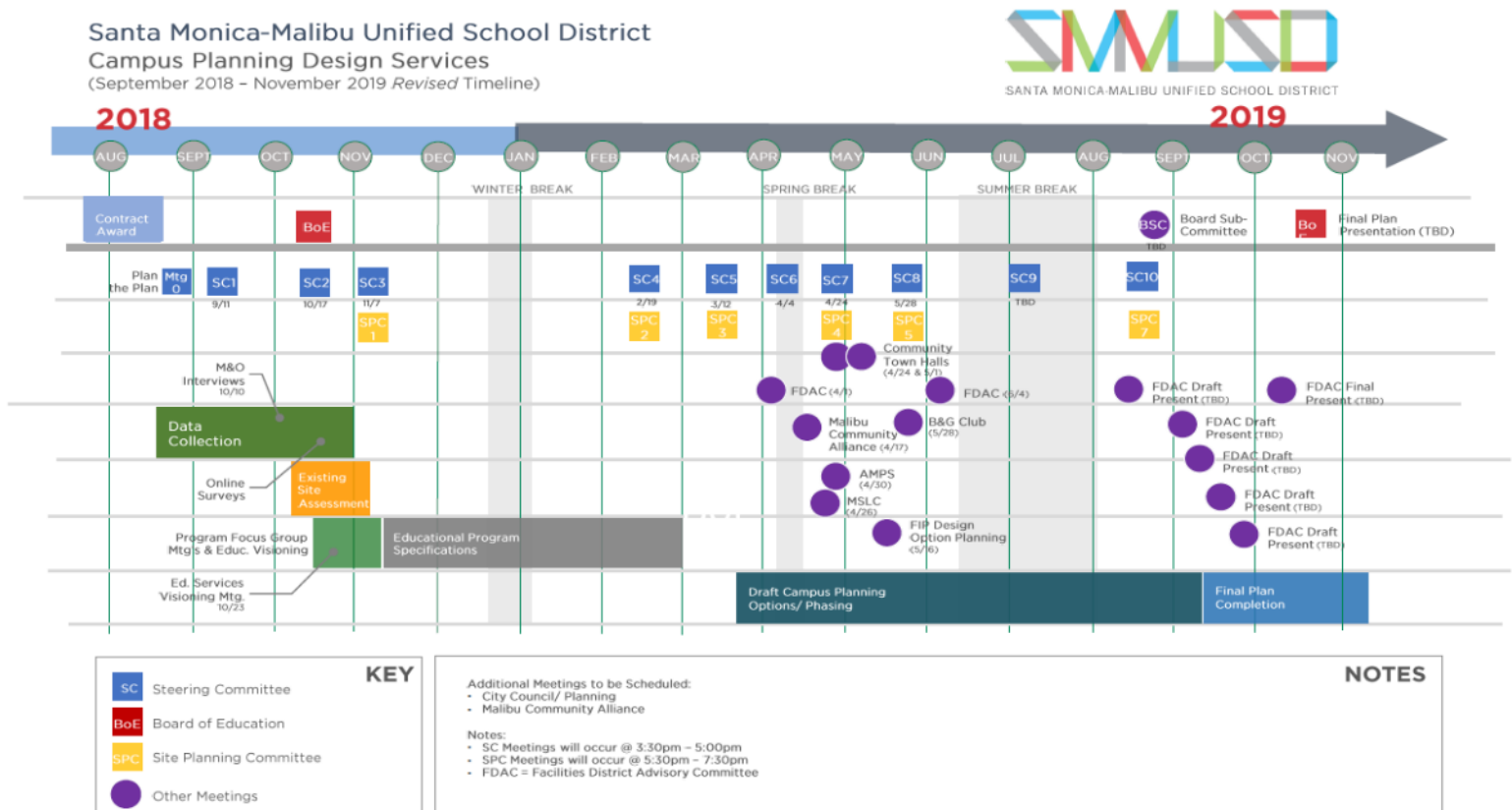
- JAMS WPFD (RFP Issued)
- Lincoln WPFD (RFP Issued)
- Lincoln HVAC (Summer 2020)
- Malibu Middle School is addressed in Malibu Campus Plan

Program-wide Facility Assessments (SMS)



Malibu Campus Plan (M)

LPA has been conducting Steering and Planning Committee meetings. FIP staff has met with MSLC, MCA, AMPS, B&G Club, and the FDAC. Two well-attended community input meetings provided guidance. Aggressive schedule, on track for November Board presentation.



Malibu Campus Plan

Sneak Preview

Master Plan
445 parking stalls



Samohi Campus Plan (ES/SMS)

- Re-evaluation at each phase regarding changes in population/ educational needs. (Ph 3A evaluation is now necessary – planned Board retreat study session.)
- FIP conducts regular meetings with Samohi Facilities Site Committee regarding Discovery Building and the Samohi Campus Plan, as well as ongoing minor projects.
- Procurement of Phase 3 architect will begin this Fall.

Phase	Anticipated Demolition Date	Anticipated Building Occupancy Date
1 & 2	Summer 2018	Winter 2022
3	Summer 2023	Spring 2024
4	Summer 2024	Spring 2027
5	Summer 2027	Spring 2031
6	Summer 2031	Spring 2035
7	Summer 2039	Summer 2043
8	Fall 2043	Fall 2045
9	Fall 2045	Fall 2047





What's Next?

- FIP will present a proposed Measure SMS budget on August 28, 2019 at the Board Retreat.
- Discussion will involve the Capstone Program, Phase 3 of Samohi Campus Plan, Michelle and Barack Obama Center for Inquiry and Exploration, and anticipated Elementary and Middle School Projects.
- Measure M discussion will take place in November 2019.



Bond Program Update

Questions?