

Bond Project Office Update

Board of Trustees Meeting,
August 8, 2019

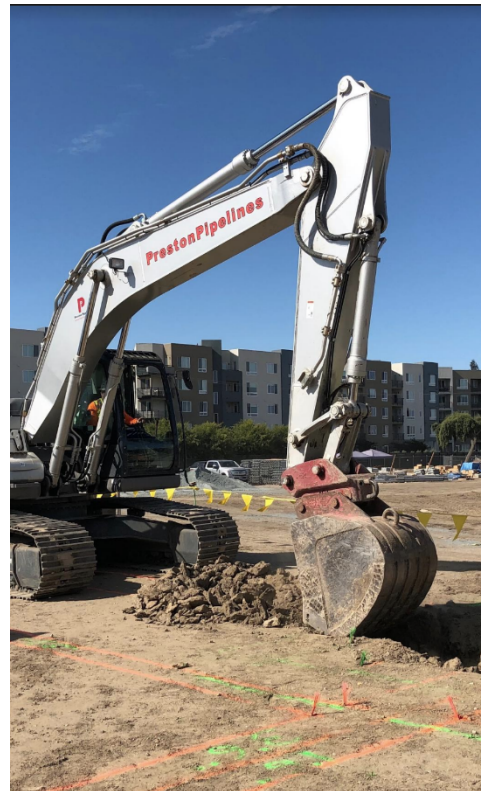
Measure BB

- **Agnews Elementary and Middle Schools**

DSA issued approval to commence footing excavation on the elementary school Office and Kindergarten buildings at 6:00PM on Monday, July 22, 2019. Excavating commenced the following morning. The final approval process for the Cement Deep Soil Mixing ground improvement portion of the project – after sampling by the contractor and testing by the independent testing laboratory, acceptance by the Geotechnical Engineer and approval by the California Geologic Survey (CGS) – was not what was expected. The approval process was a seven-day-a-week process by all parties. All elementary school buildings have been approved. Approval of the middle school buildings is continuing.



A portion of the 16 mile underground conduit system.



Elementary school footing excavation begins!

- **Zanker Road**

Final drawings were submitted to the City of San Jose Public Works Department on July 16. Resolutions have been drafted for the right-of-way easement adjustment. Staff is preparing for traffic mitigation fee discussions.

- **New Elementary School Play Structures** Work nearing completion on play structures and fencing improvements at the following sites:

Braly Elementary	George Mayne Elementary
Don Callejon K-8	Pomeroy Elementary
Haman Elementary	Scott Lane Elementary
Laurelwood Elementary	



(Haman Kindergarten)

Work will continue for a few weeks into the school year for fencing and on the upper grade structures at Braly and Pomeroy

- Planning is underway for **Shade Structures, Play Structures** and **Fencing and Gates** for next summer. The new shade structure at Central Park, just completed, is an indication of what's to come.



- **New Standing-seam Metal Roofs** DSA has issued plan check comments for Wilson Education Options Campus. Planning is under way for the other sites in the Roof Replacement program.

Measure H-2014

- Agnews Campus
 - Footing excavation has begun on the elementary school.
 - Cement deep soil mixing (CDSM) is progressing on the high school.
 - Bidding and contract award is progressing.
- Central Park Elementary School Administration Building and Two-story Classroom Building
 - The project is substantially complete. Final cleaning and move-in are underway.
 - Final landscaping is underway.
 - The before and after school day care complex is nearing completion
- Buchser Middle School Tennis Courts.
 - Asbestos abatement of the courts base is underway.
 - New paving of the PE basketball courts is complete.
 - Tennis court construction will begin after asbestos abatement clearance and will be complete before the end of the year.
- Cabrillo Middle School Locker and Classroom Building
 - The project is substantially complete. Final cleaning and move-in are underway.
- Peterson Middle School
 - The project was submitted to DSA for permit approval on January 22. Plan check comments are expected soon.
 - Pool demolition is complete.
 - Temporary fencing is underway for the start of school.
- George Mayne
 - Play structure replacements and paving are near complete.
- Patrick Henry Campus Master Plan
 - Project planning is underway.
 - The topographic survey is complete.

Measure H-2010

- Central Park Two-Story Classroom Building
 - Remaining funds from the Measure H-2010 Bond are being used to augment completion of the Central Park classroom building. The project qualifies under two categories of projects in the Measure H-2010 Bond Project List: "2.) Renovate and reopen closed school sites." And "3. Expand overcrowded schools by

renovating and repairing outdated classrooms and adding classrooms as needed.”

Measure J-2004

- Pedestrian Bridge over Calabazas Creek at Wilcox High School.
 - Staff is working to resolve the impasse on the agreement with the Santa Clara Valley Water District.
- Storm water drainage improvements and signage systems at Wilson Ed. Options.
 - Bidding documents are being prepared.

PHOTOGRAPHS

Cabrillo Middle School
PE/Science Classroom Building



Central Park Two-Story Classroom Building

