

Steele Lane Elementary School Principal Report

2019-2020

By Diane Johnson



SRCS LCAP Goals

Goal 1: Provide a coherent, rigorous and relevant teaching and learning program to graduate college and career ready students.

Goal 2: Increase student and family wellness and engagement through the full service community school model.

SRCS Theory of Action



If we improve the quality of practice through the continuous development of Leadership capacity to:

- A. Assure warm, safe, dry schools and facilities
- C. Confront and address issues of equity and access
- E. Engage in problem-solving through an inquiry cycle for growth**
- F. Facilitate the development of a sense of purpose
- L. Lead and guide focused professional learning
- P. Provide and strengthen social and emotional supports
- R. Recognize and implement quality instruction**
- T. Target and align resources**
- U. Utilize data to inform the inquiry cycle for growth**

Then, we have much work to do as a district. No longer will student outcomes be predicted based on race, gender, differently abled, socioeconomic status, and/or the language spoken at home.

Santa Rosa City Schools Strategic Plan

2019-2024

Vision: SRCS will send students into the world who are empowered to **work together**, find purpose, **think critically**, **embrace diversity**, adapt to our changing planet, and live healthy and fulfilling lives.

Mission: SRCS ensures equitable access to a transformative educational experience grounded in the assets of our students, staff, and community. We nurture the whole student in an **engaging, challenging, and safe environment**. We recognize and value each student's individuality and our community's cultural wealth.

Santa Rosa City Schools Strategic Plan Priorities 2019-2024



Priority 1- Life Ready Learners

Priority 2- Balanced Education

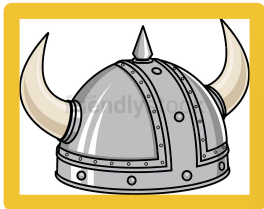
Priority 3- High Quality Staff

Priority 4- Teaching and Learning Environment and Resources

Priority 5- Equity and Excellence

Priority 6- Family Engagement and Community Partnerships

Priority 7- Sustainable Funding



Steele Lane's SPSA Goals and Focus Areas

Goal 1: Increase student achievement in LITERACY, WRITING, and MATH assessed by multiple measures.

- **Strategy 3 - Provide instruction for intervention and enrichment in reading, math and science.**
- **Strategy 8 - Provide professional development.**
- **Strategy 9 - Provide release time for teacher collaboration.**

Goal 2: Increase student attendance and engagement.

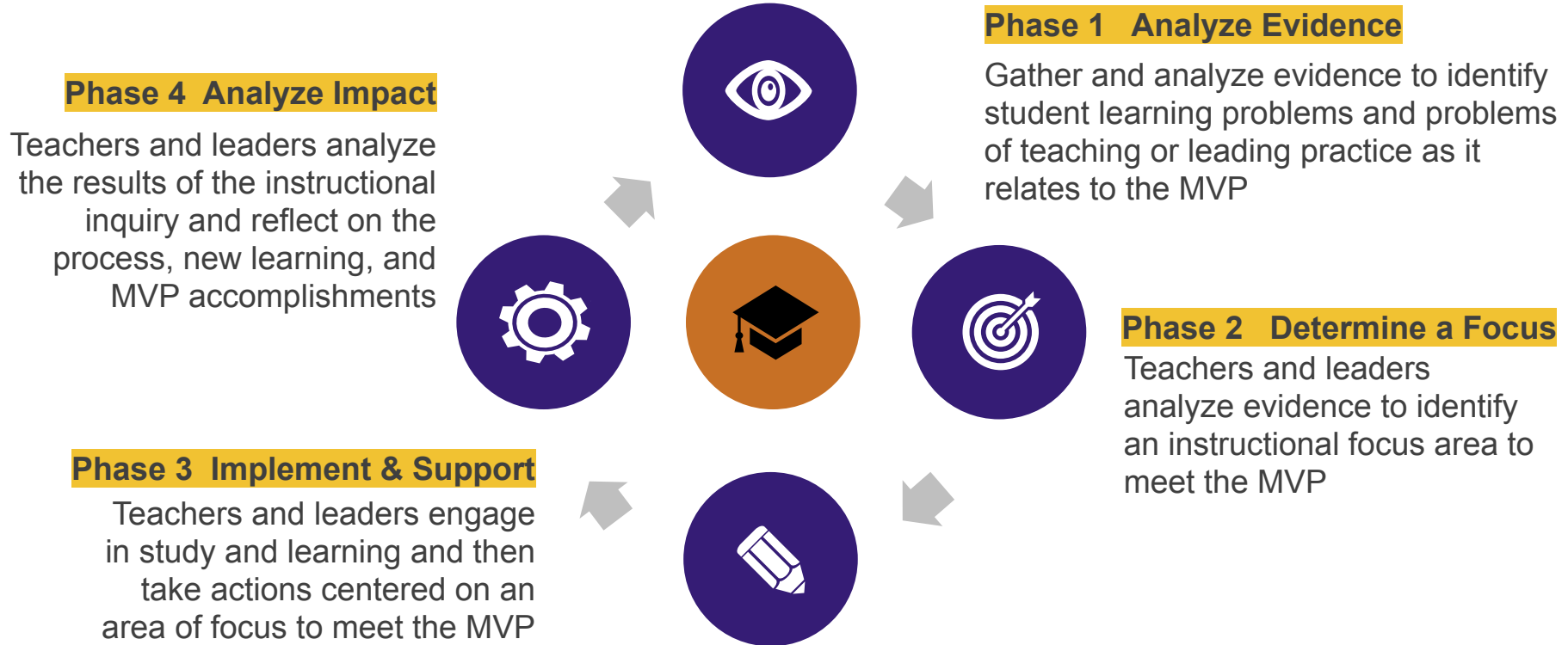
- **Strategy 15 - Implement School-wide BEST Practices and a Multi-Tiered System of Supports (MTSS)**

2019-20 Instructional Focus

Develop a plan to increase or improve evidence-based services for students to accelerate increases in academic achievement including how the effectiveness of services will be measured.

Inquiry Cycle

Instructional Leadership and the MVP



Phase 1 - Analyze Evidence

In October, a day of collaboration was created for grade level teams to meet and analyze data....

- **4th - 6th grade** level teams looked at the data from the Smarter Balanced Assessments (SBAC) from 2019 in both ELA and math.
- **K-3rd grade** level teams spent time analyzing Let's Go Learn data in both ELA and math.

Analyze Evidence SBAC - ELA

2017

Overall Performance: 49 students

Met
Achievement
Standard

18%

9 Students

4

10.2%
5 Students

3

8.2%
4 Students

2019

Overall Performance: 153 students

Met
Achievement
Standard

19%

29 Students

4

4.6%
7 Students

3

14.4%
22 Students

Claim Performance: Percent of Students at Each Level

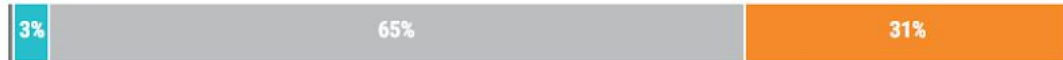
Reading



Writing



Listening



Research/Inquiry



ADDITIONAL FILTERS APPLIED: Student Group: All Students

Analyze Evidence - SBAC - Math

2017

Overall Performance: 49 students

Met
Achievement
Standard

16%

8 Students

4

6.1%
3 Students

3

10.2%
5 Students

2019

Overall Performance: 153 students

Met
Achievement
Standard

16%

25 Students

4

5.2%
8 Students

3

11.1%
17 Students

Claim Performance: Percent of Students at Each Level

Concepts & Procedures



Problem Solving & Modeling/Data



Communicating Reasoning



ADDITIONAL FILTERS APPLIED: Student Group: All Students Add Student Group: All Students

Analyze Evidence - Let's Go Learn 2019 ELA

Performance 3-Band Report for DORA K-12

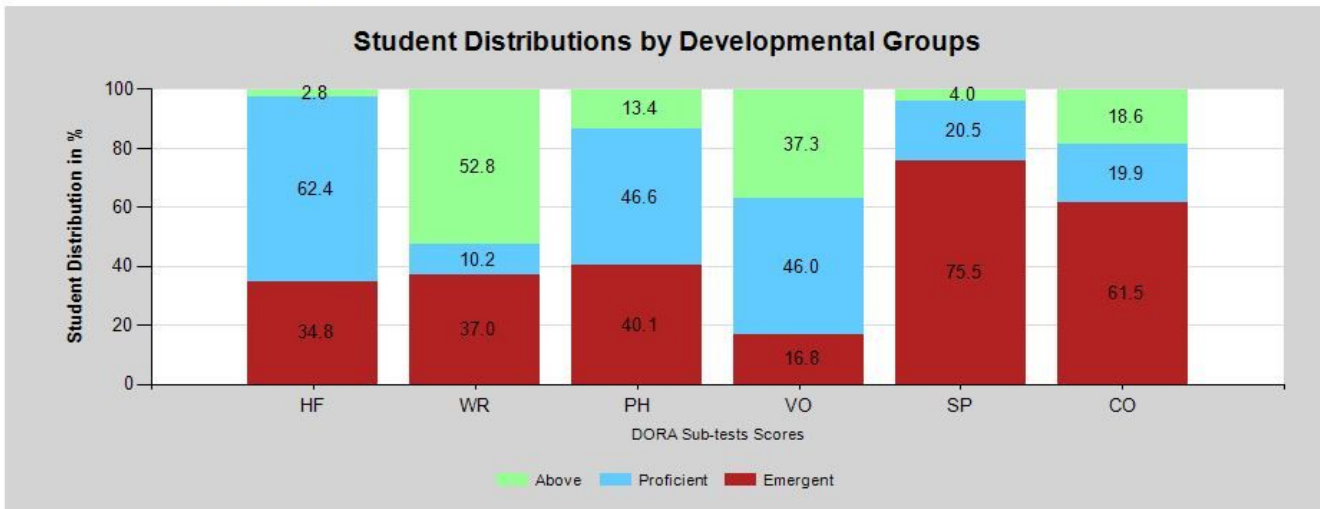
P1) Pre-Test: 8/1/2019 To 12/4/2019

P1 Count: 322

Grade Range: 1 to 6.99

Mode: A

Sites: Steele Lane Elementary School



Status	High-Freq. Words	Word Rec.	Phonics	Spelling	Vocabulary	Comprehension
Above	2.8%	52.8%	13.4%	4.0%	37.3%	18.6%
Proficient	62.4%	10.2%	46.6%	20.5%	46.0%	19.9%
Emergent	34.8%	37.0%	40.1%	75.5%	16.8%	61.5%

Analyze Evidence - Let's Go Learn 2019 Math

Performance 4-Band Report - ADAM

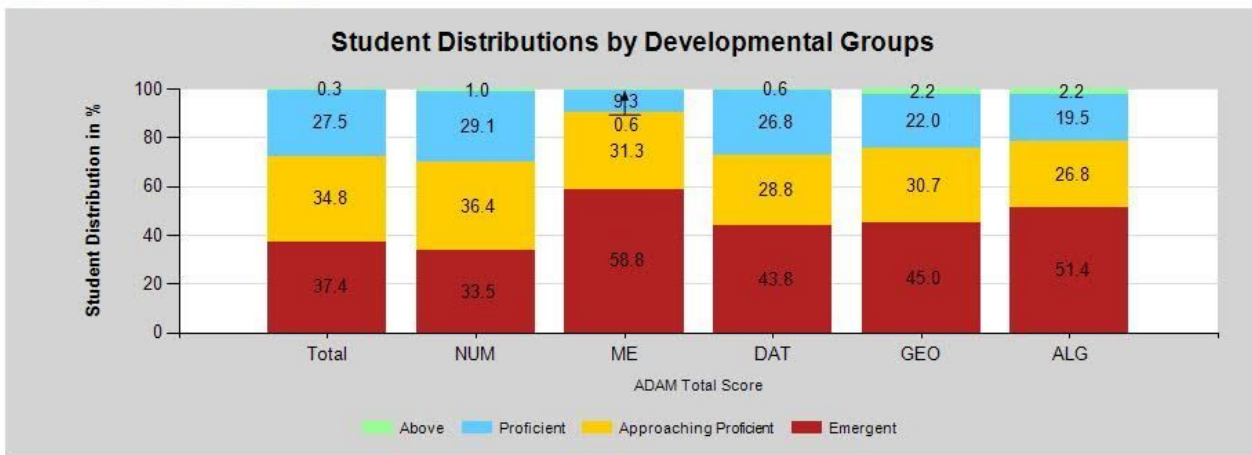
P1) Pre-Test: 8/1/2019 To 12/4/2019

P1 Count: 313

Grade Range: 1 to: 6.99

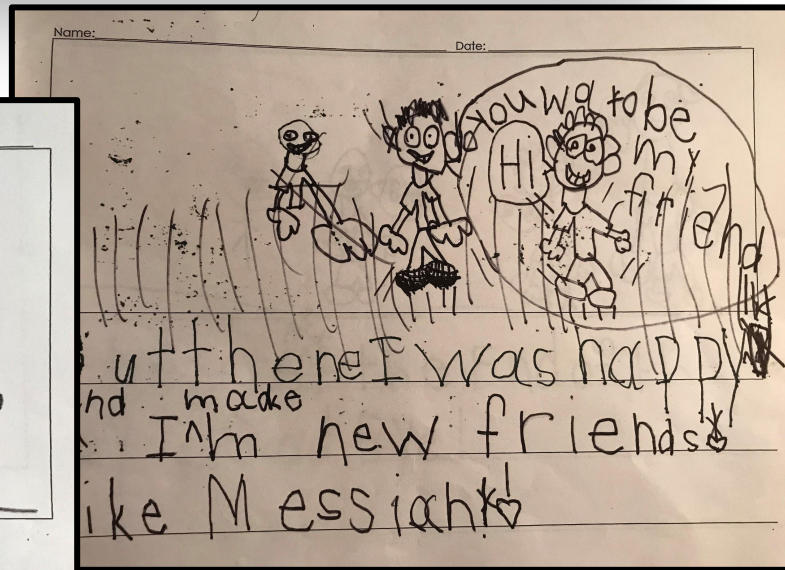
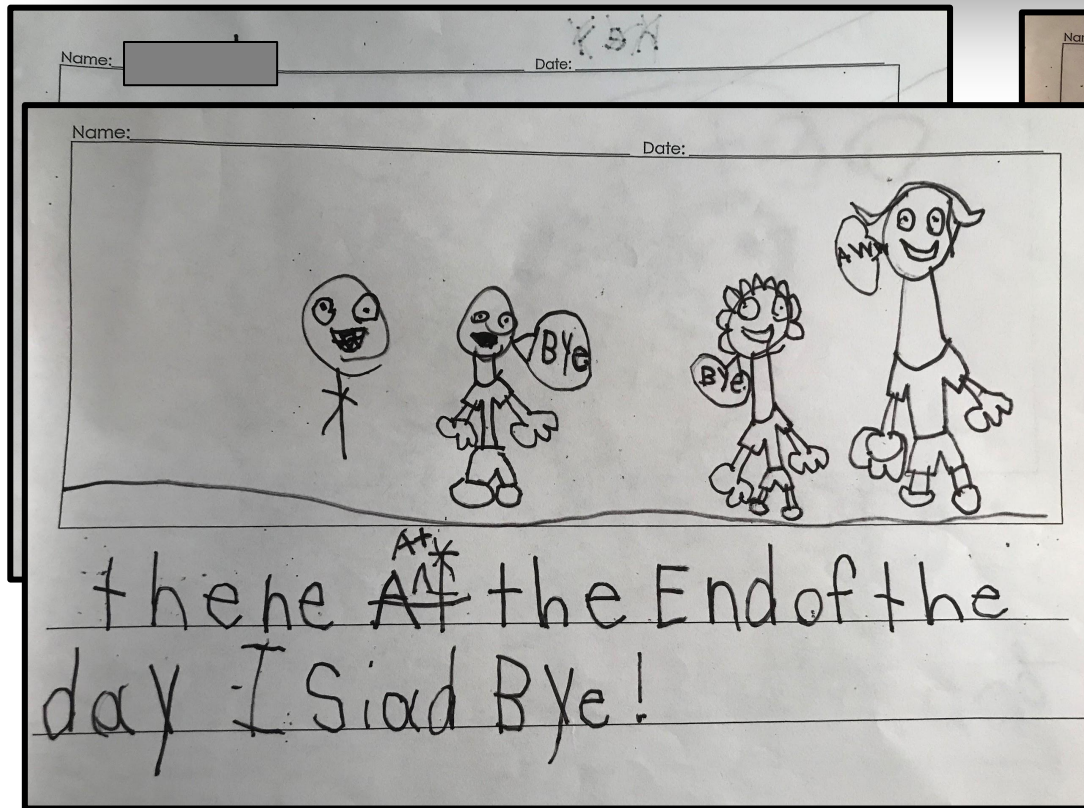
Mode: A

Sites: Steele Lane Elementary School



Status	Total Score	Num & Op.	Measurement	Data/Prob.	Geometry	Algebra
Above	0.3%	1.0%	0.6%	0.6%	2.2%	2.2%
Proficient	27.5%	29.1%	9.3%	26.8%	22.0%	19.5%
Approaching Proficient	34.8%	36.4%	31.3%	28.8%	30.7%	26.8%
Emergent	37.4%	33.5%	58.8%	43.8%	45.0%	51.4%

Phase 1 - Analyze Evidence in ELA 2019



**First Grade Team Collaboration
+/- Activity**

Phase 2 - Determine a Focus

In November, two days of collaboration were created for grade level teams to meet and determine a focus. Each team created:

A Strategic Focus:	In ELA or Math
Claim:	From the CA Common Core Standards
Theory of Action:	Example - 1st Grade “If we pull small groups & work on stretching sounds to get more of the words on the page, then we will see an increase in clarity & details in the writing samples overall through the year across genres of writing. We will look at a pre-post to measure the growth between the genres.
Evidence to Gather:	Example - 9 x samples (3-H; 3-M; 3-L) case study

Phase 3 - Implementation and Support

- **Classrooms** - Targeted instructional time to implement chosen theory of action strategies and to gather evidence of learning.
- **Intervention Supports** - Intervention teachers and TOSA provide differentiated instruction in these claims.
- **Educational Specialists** - Are included in the work to support our challenged learners.
- **Teacher Implementation Support** - TOSA available to support all grade-level teams with resources and coaching to implement.

Phase 4 - Analyze Impact

Monthly Site
Collaborations



Weekly
Grade-level
Collaborations

Instructional Focus Meetings

Reflection and Learning

- **Our Focus on SRCS Strategic Plan (MVP):**
Vision - **Working Together - Think Critically - Embracing Diversity**
Mission - **Engaging - Challenging - Safe Environment**
- **Collective learning (staff and principal):** Together we are building a process to carry ourselves and students forward.
- **Learning as a Leader:** Continue to build a collaborative community where we continuously work together to support positive student outcomes because....

.....we are

strong  as steele