

BOUNDARY ANALYSIS FOR 2017-18 ELEMENTARY SCHOOL OPENINGS

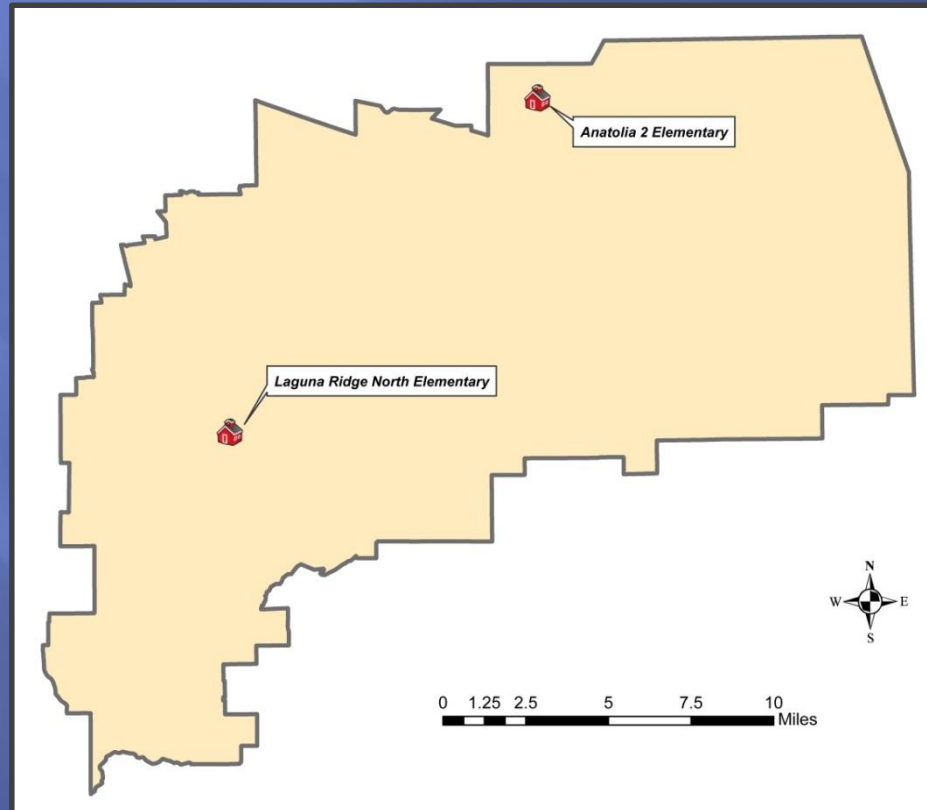
Robert Pierce

Business Services and Facilities

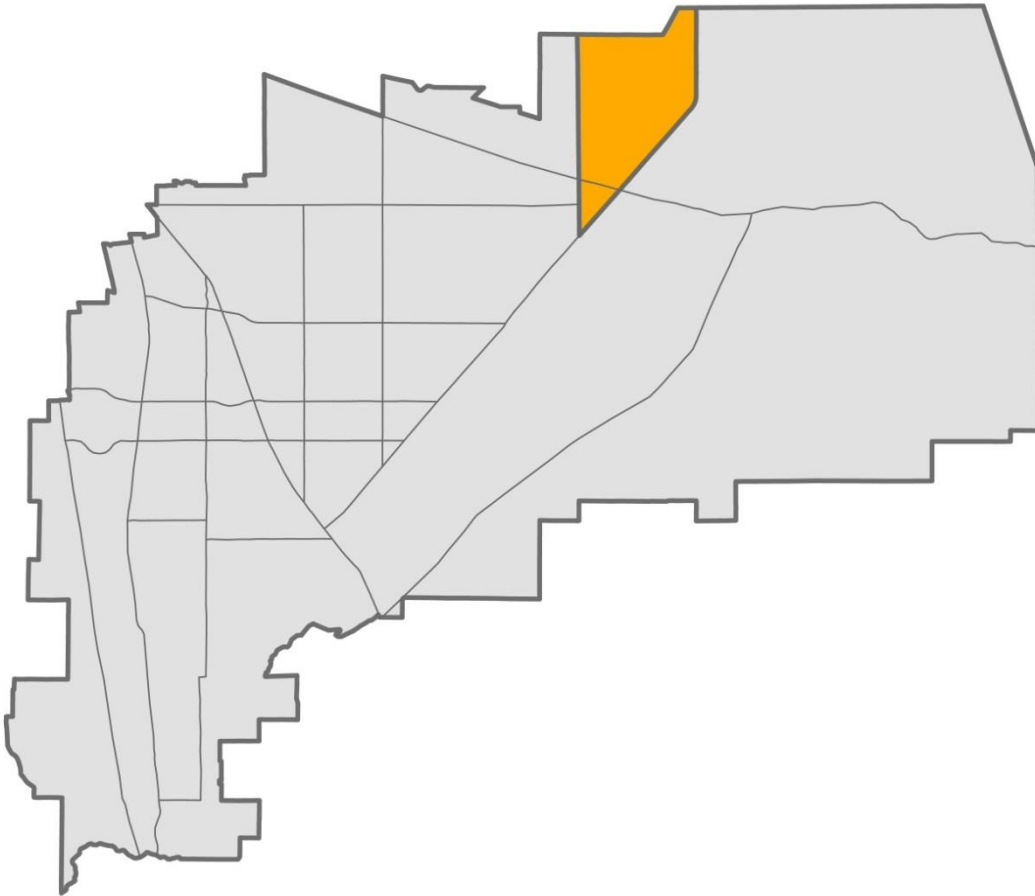
September 6, 2016

New Schools Planned to Open August 2017

- ▣ “Anatolia 2” Elementary School
- ▣ “Laguna Ridge North” Elementary School



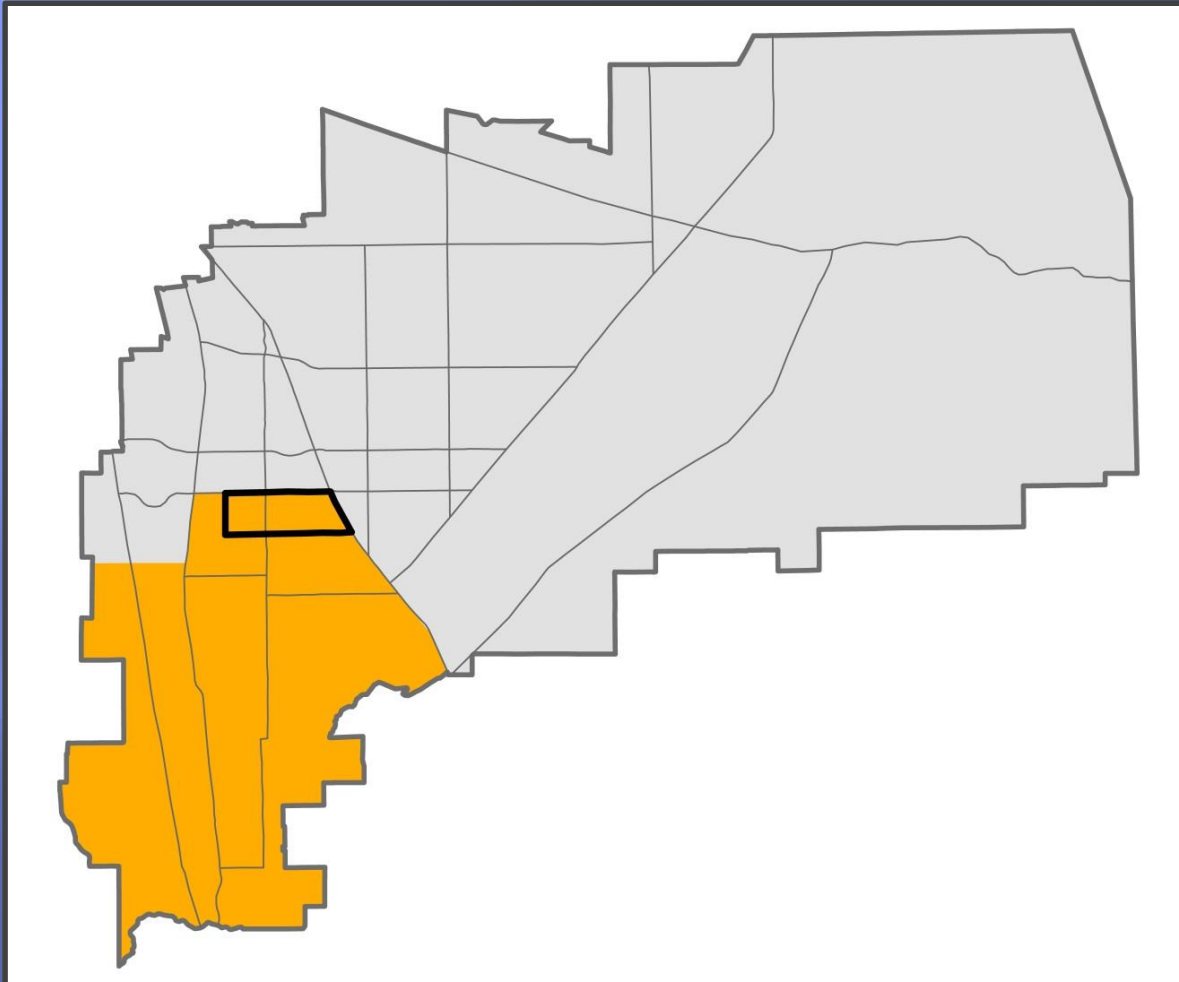
Sunrise Region



Year	Estimated Residing PreK - 6 Students
2015-16	1,269
2016-17	1,366
2017-18	1,428
2018-19	1,510
2019-20	1,570
Buildout*	7,600

*Based upon currently approved or proposed landuse plans

Southwest Region



Year	Estimated Residing PreK - 6 Students
2015-16	4,591
2016-17	4,764
2017-18	4,982
2018-19	5,054
2019-20	5,053
Buildout*	8,500

*Based upon currently approved or proposed landuse plans

Community and Staff Input

- ▣ Meetings held with staff at all affected schools:
 - Sunrise Elementary – May 17, 2016
 - Franklin Elementary – May 23, 2016
 - Arlene Hein Elementary – June 8, 2016
- ▣ Community meetings held:
 - Sunrise Elementary – May 23, 2016
 - Franklin Elementary – May 24, 2016
 - Arlene Hein Elementary – June 15, 2016

Boundary Criteria

In deciding where to place school boundaries the Board of Education seeks:

- ❑ To establish student enrollments appropriate to each school's capacity, program, and calendar.
- ❑ To strive for a balanced enrollment within our schools over time.
- ❑ To allow for future boundary changes as student housing needs change, considering growth within an attendance area and the disruption which may result from the changes.
- ❑ To consider the rate of development activity and student population shifts occurring within existing and proposed attendance area boundaries.
- ❑ To consider walking distances, safety issues, and school or public transportation routes for new and existing schools.

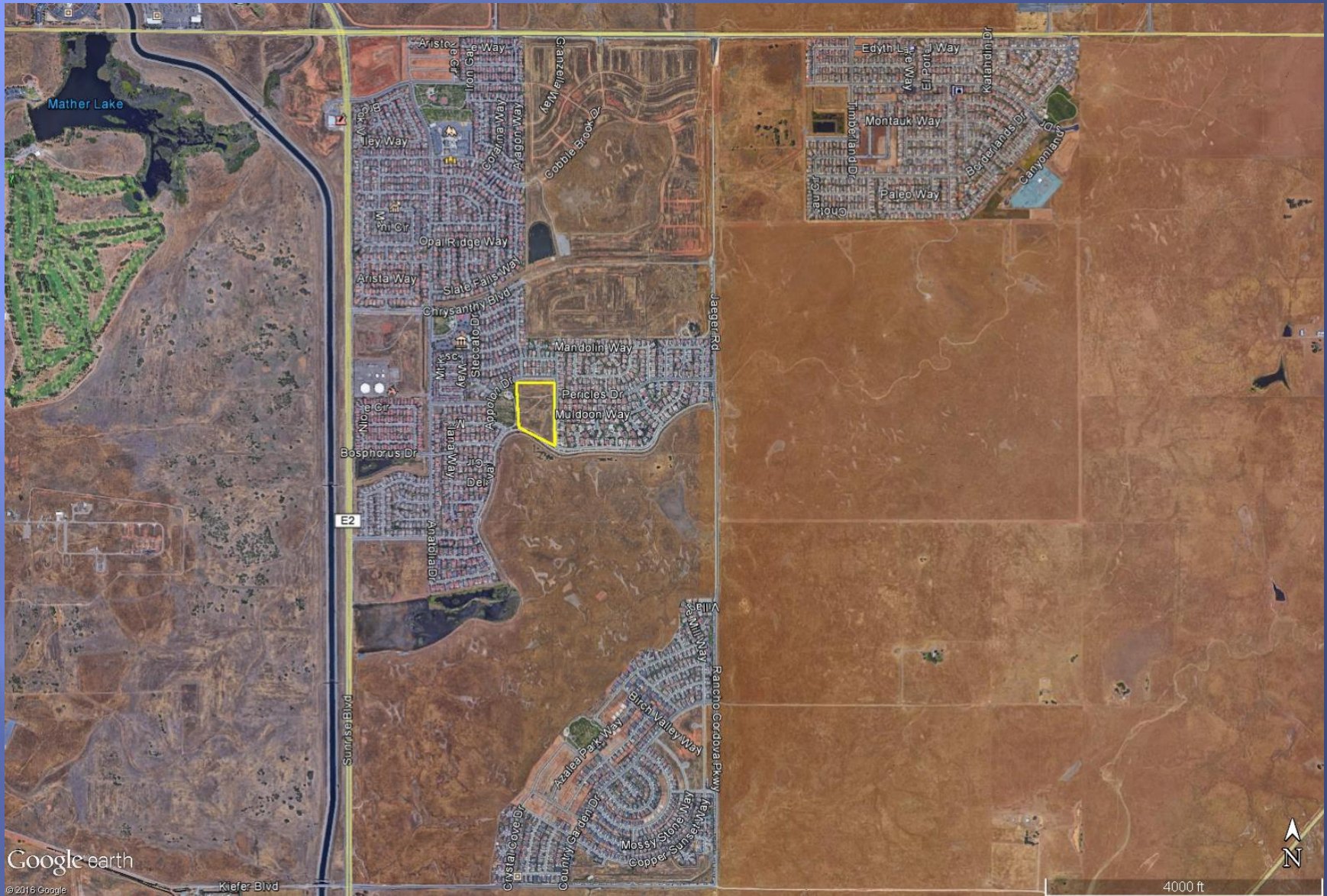
“Anatolia 2” Elementary School

- ▣ Construction began in May 2016 and planned to be completed for the 2017-18 school year.
- ▣ Located at the corner of Appolon Drive and Sophistry Drive, adjacent to Sandpiper Park.
- ▣ 10 acre school site.
- ▣ New school will have 3 PreK/Kindergarten classrooms and 27 standard classrooms.
- ▣ Capacity on Traditional school calendar = 828 and on a MTYRE calendar = 1,088.

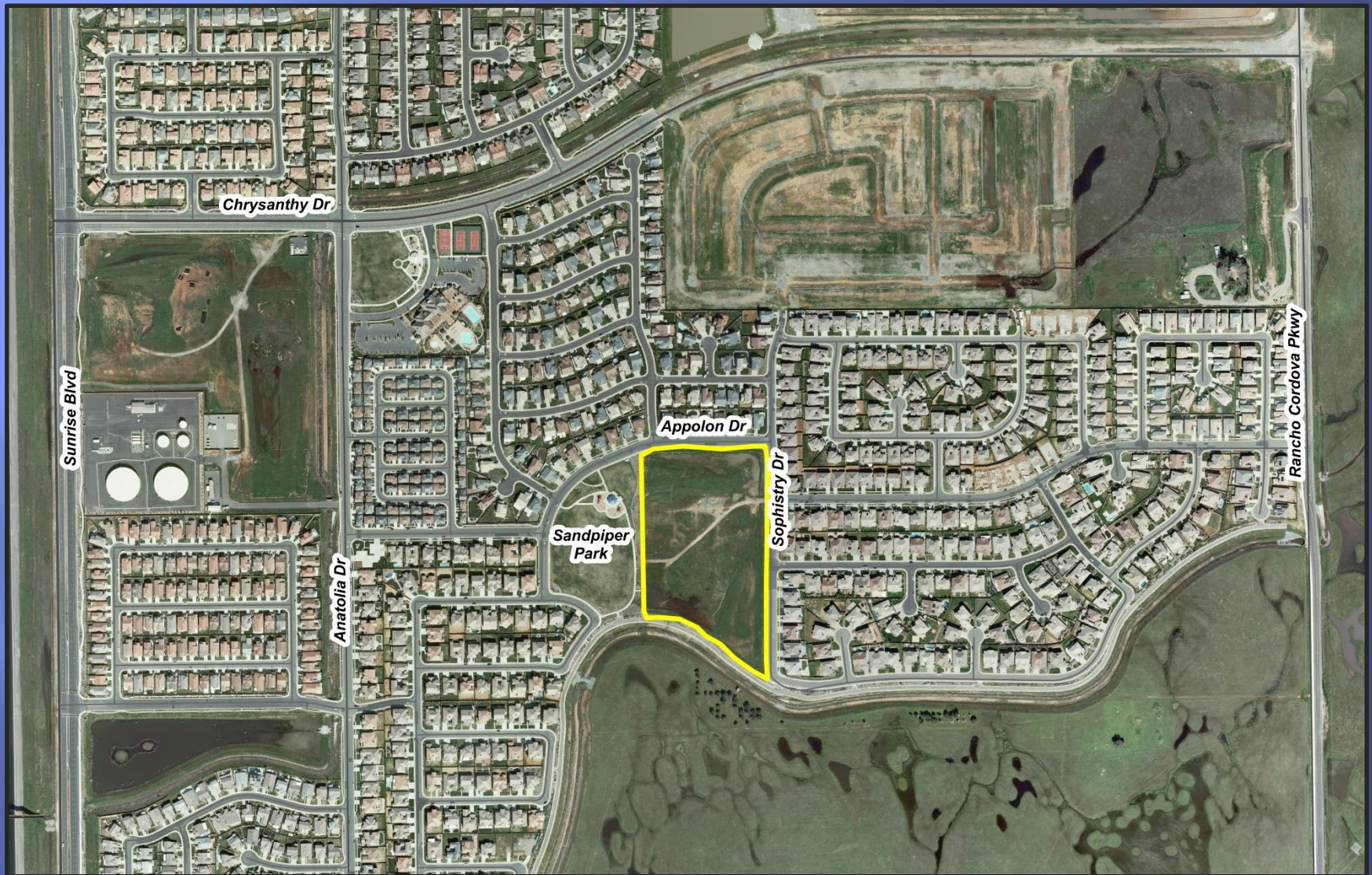
“Anatolia 2” Elementary School

- ▣ Located within the current boundary of Sunrise Elementary School.
- ▣ It is projected that approximately 1,428 PreK-6 students will be residing within the Sunrise Elementary attendance area during the 2017-18 school year.
- ▣ Extensive continued residential development expected in the region.

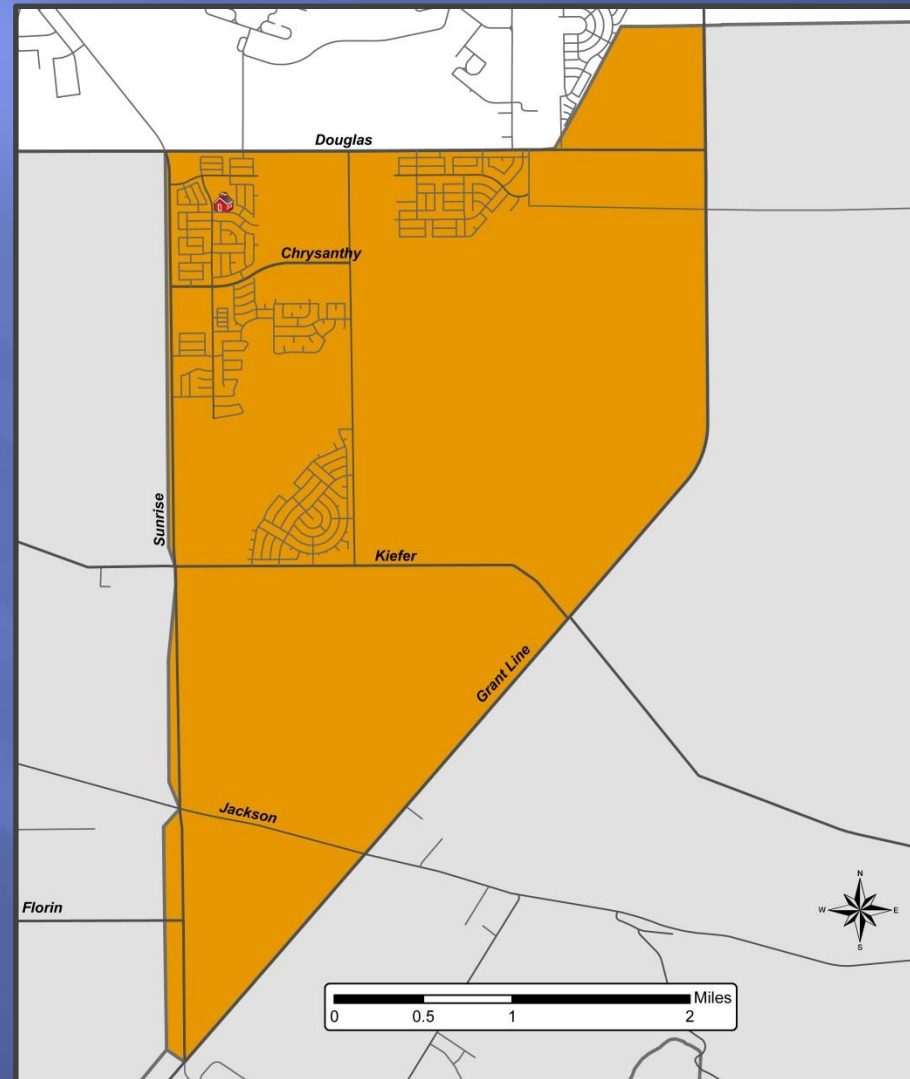
“Anatolia 2” Elementary School



“Anatolia 2” Elementary School



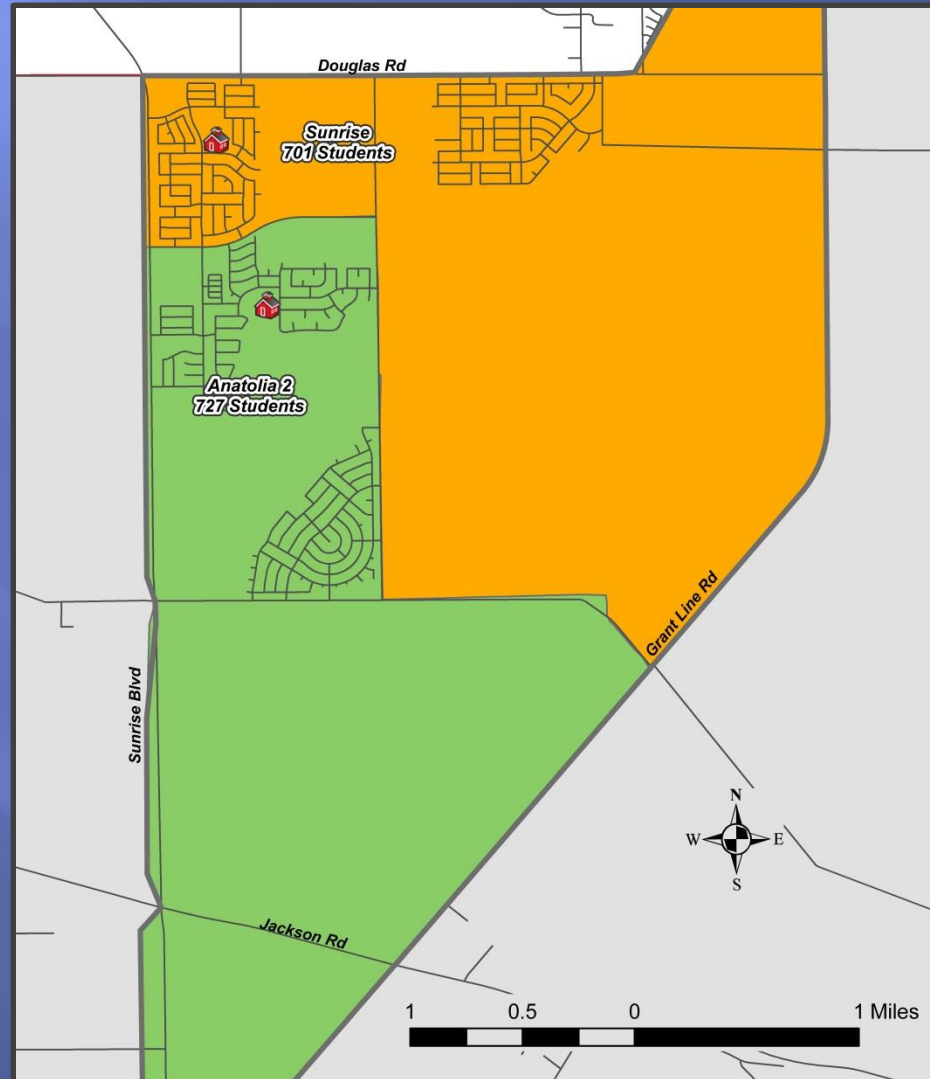
Sunrise Elementary School Current Attendance Area



“Anatolia 2” Elementary School

- ▣ Two alternative boundary plans were presented to the Sunrise Elementary School staff and community.
- ▣ “Alternative A” was overwhelming preferred and is the recommended boundary.

“Anatolia 2” Elementary School Recommended 2017-18 Boundary

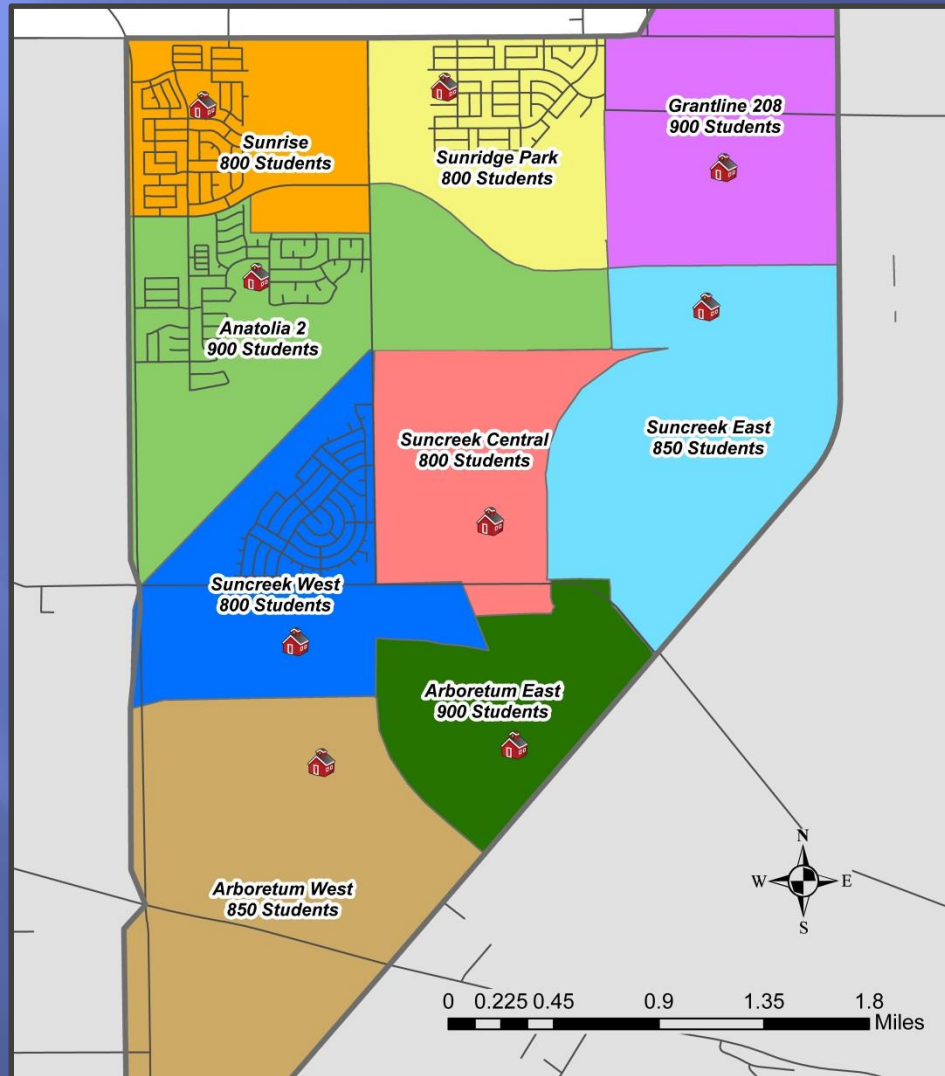


“Anatolia 2” Elementary School Projected Residing Students (Recommended Boundary)

School Name	Capacity		2017-18 Projected Residing	2018-19 Projected Residing	2019-20 Projected Residing
	Traditional	YRE			
Anatolia 2	828	1,088	727	746	752
Sunrise	1,088	1,426	701	763	818
TOTAL	1,916	2,514	1,428	1,510	1,570

(Includes TK-6 General Education, PreK and SCC)

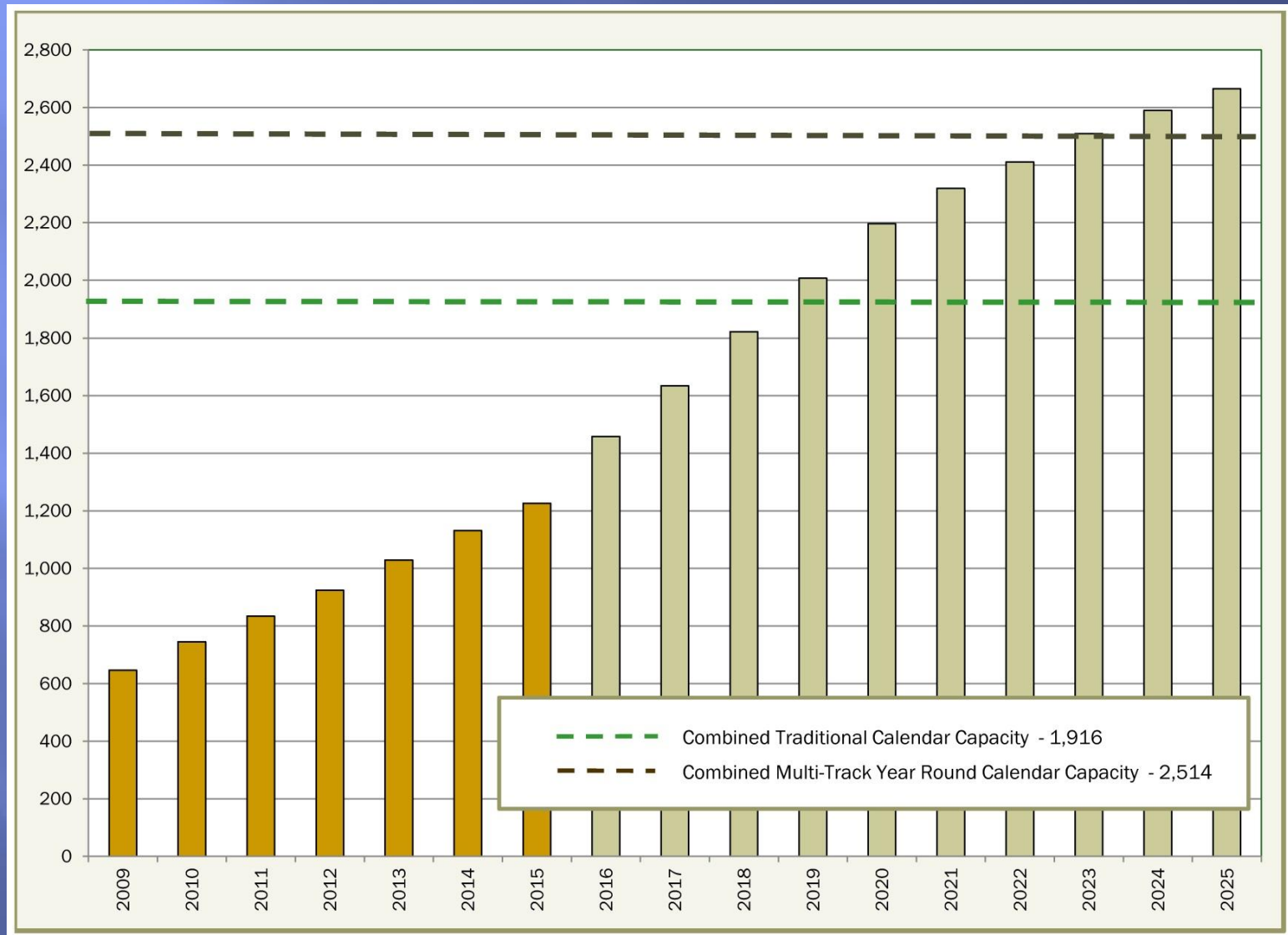
Sunrise Region At Build-Out



Sunrise Region Projected Residing Students at Build-Out

School	Estimated PreK-6 Residing Students
Anatolia 2	900
Arboretum East	900
Arboretum West	850
Grantline 208	900
Suncreek Central	800
Suncreek East	850
Suncreek West	800
Sunridge Park	800
Sunrise	800
Total Sunrise Region	7,600

Sunrise Region Projected TK-6 Residing Students



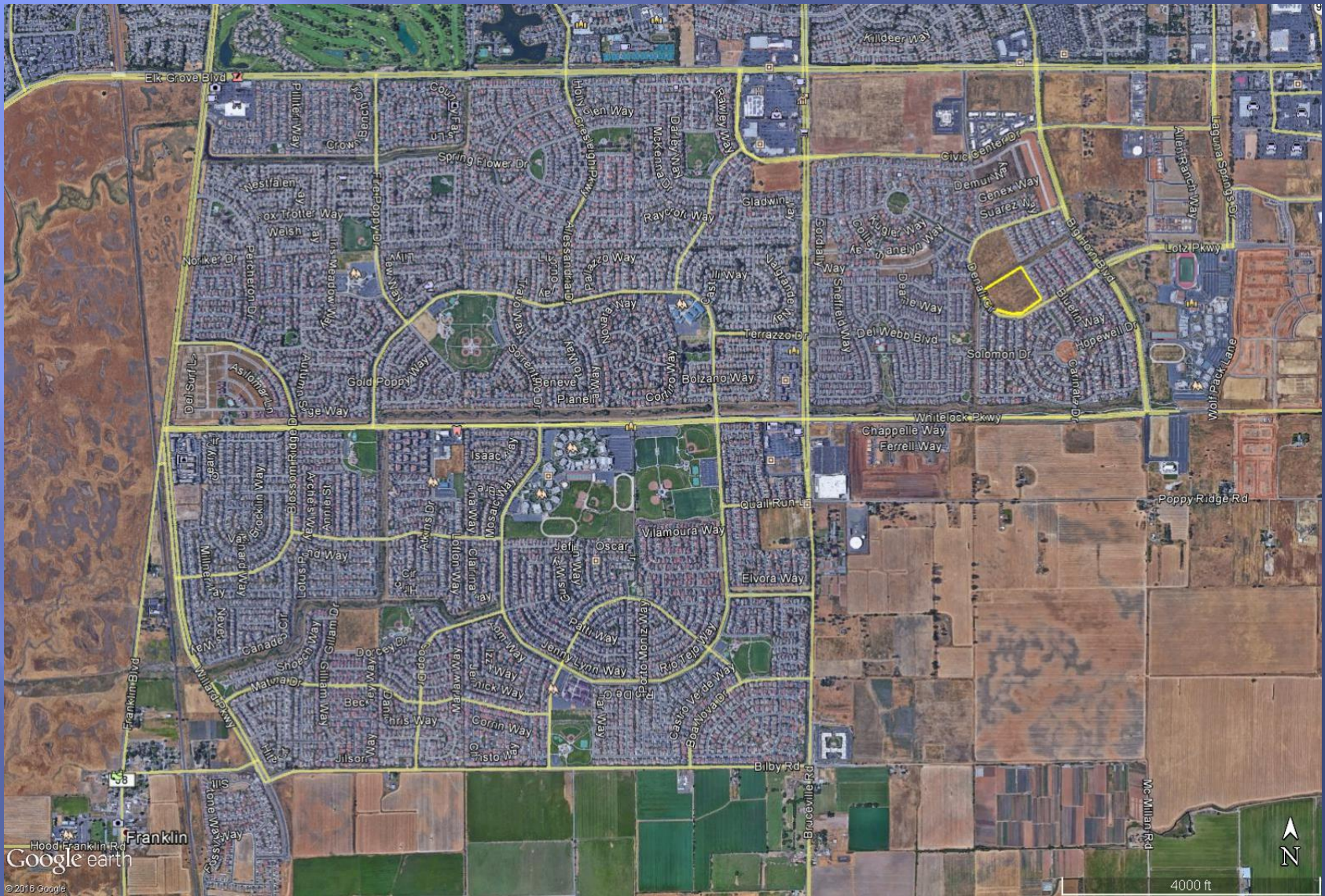
“Laguna Ridge North” Elementary School

- ▣ Construction began in June 2016 and planned to be complete for the 2017-18 school year.
- ▣ Located at the corner of Denali Circle and Elston, adjacent to Horseshoe Park.
- ▣ 10 acre school site.
- ▣ Phase one includes 3 PreK/Kindergarten classrooms, 30 standard classrooms and 2 special education classrooms.
- ▣ Capacity on Traditional school calendar = 926 and on a MTYRE calendar = 1,206.

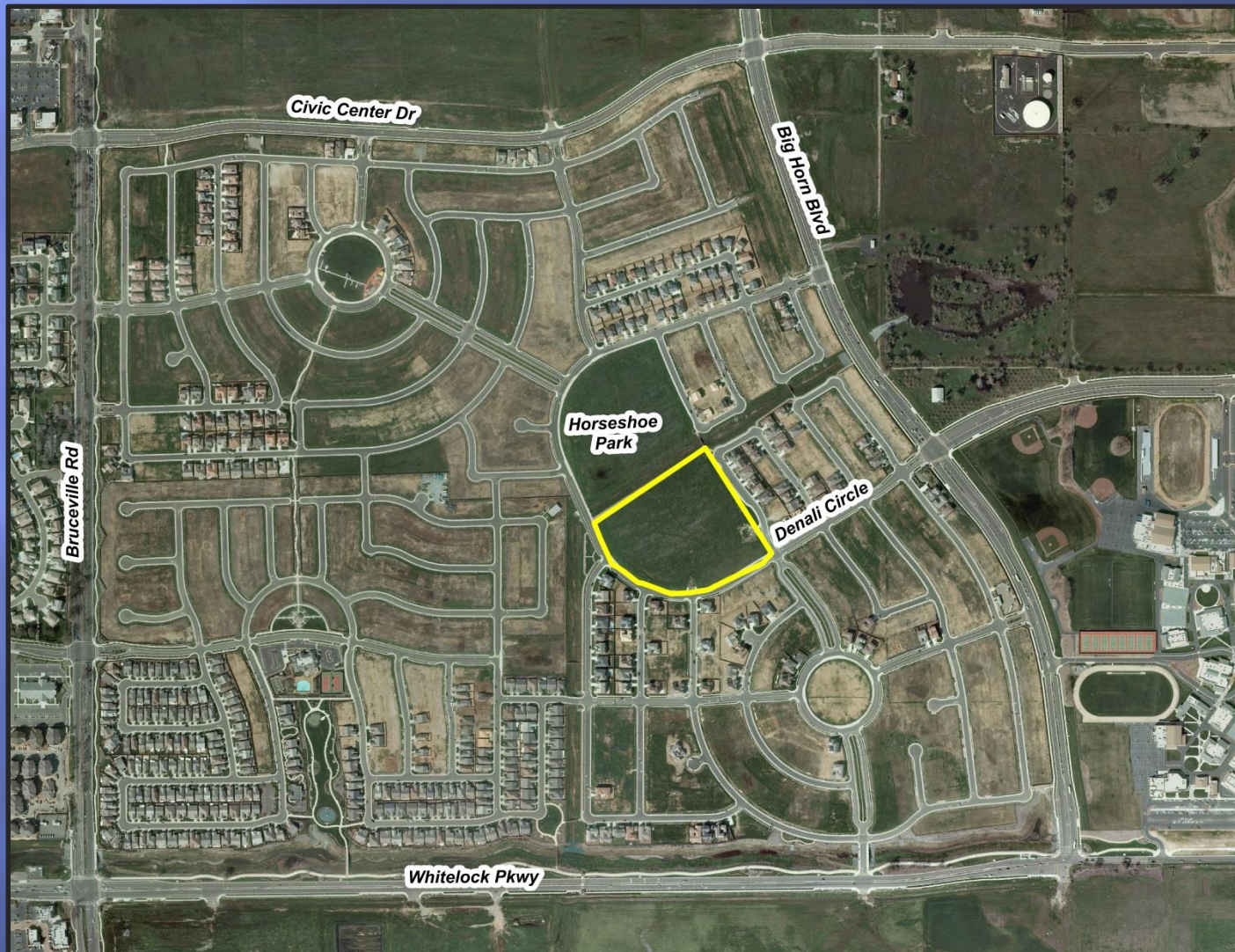
“Laguna Ridge North” Elementary School

- ▣ Located within the current boundary of Arlene Hein Elementary School.
- ▣ It is projected that approximately 1,758 PreK-6 students will be residing within the Arlene Hein Elementary School attendance area during the 2017-18 school year.
- ▣ Extensive continued residential development expected in the region.

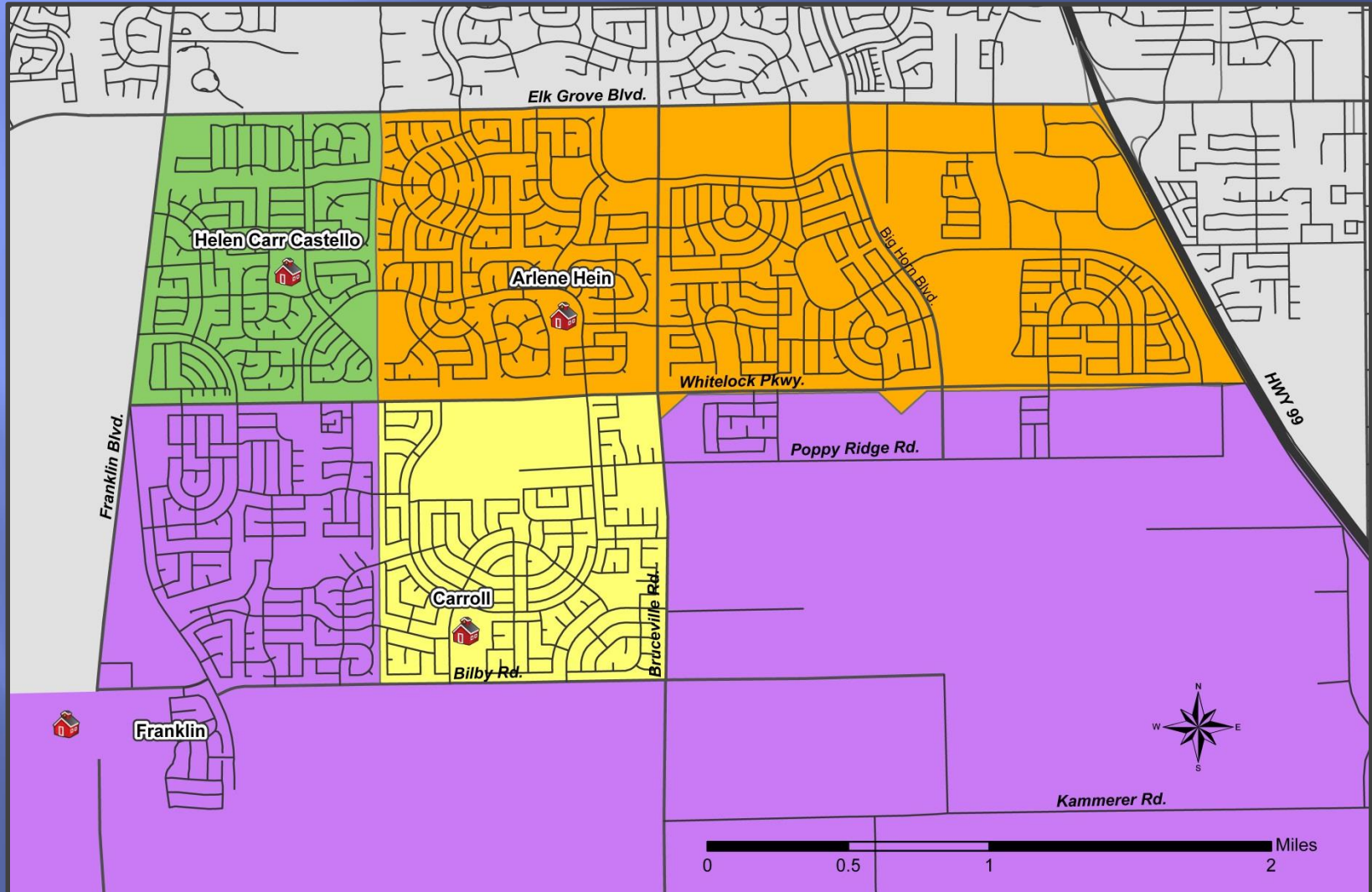
“Laguna Ridge North” Elementary School



“Laguna Ridge North” Elementary School



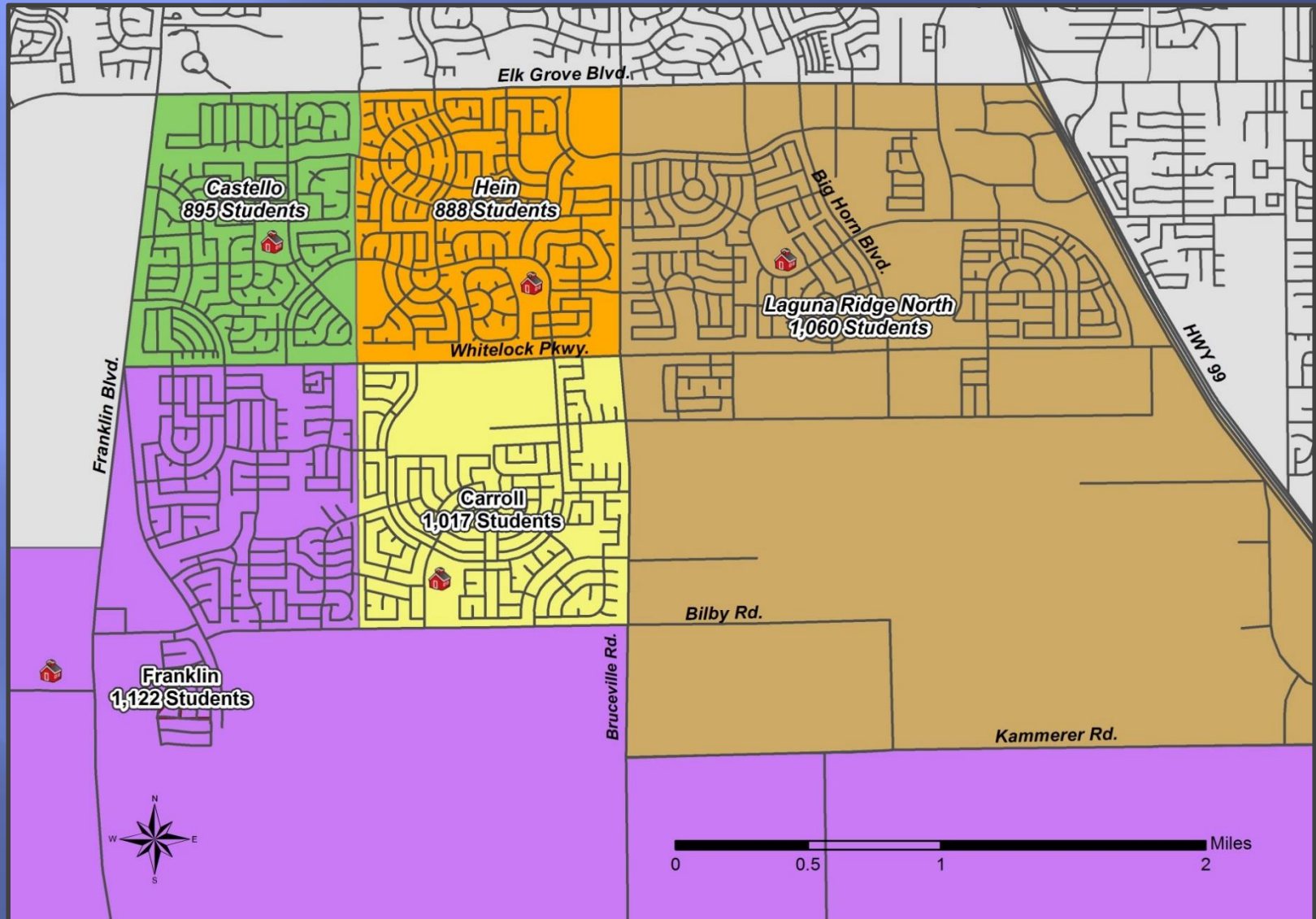
Southwest Region Current Boundaries



“Laguna Ridge North” Elementary School

- ▣ Two alternative boundary plans were presented to the Franklin Elementary School and Arlene Hein Elementary School staff members and communities.
- ▣ After considering the input received from staff and the community, “Alternative B,” with a modification requested by rural Franklin Elementary School families, is the recommended boundary.
- ▣ “Alternative B” would require that “Laguna Ridge North” Elementary School open on a MTYRE calendar.

“Laguna Ridge North” Elementary School 2017-18 Recommended Boundary



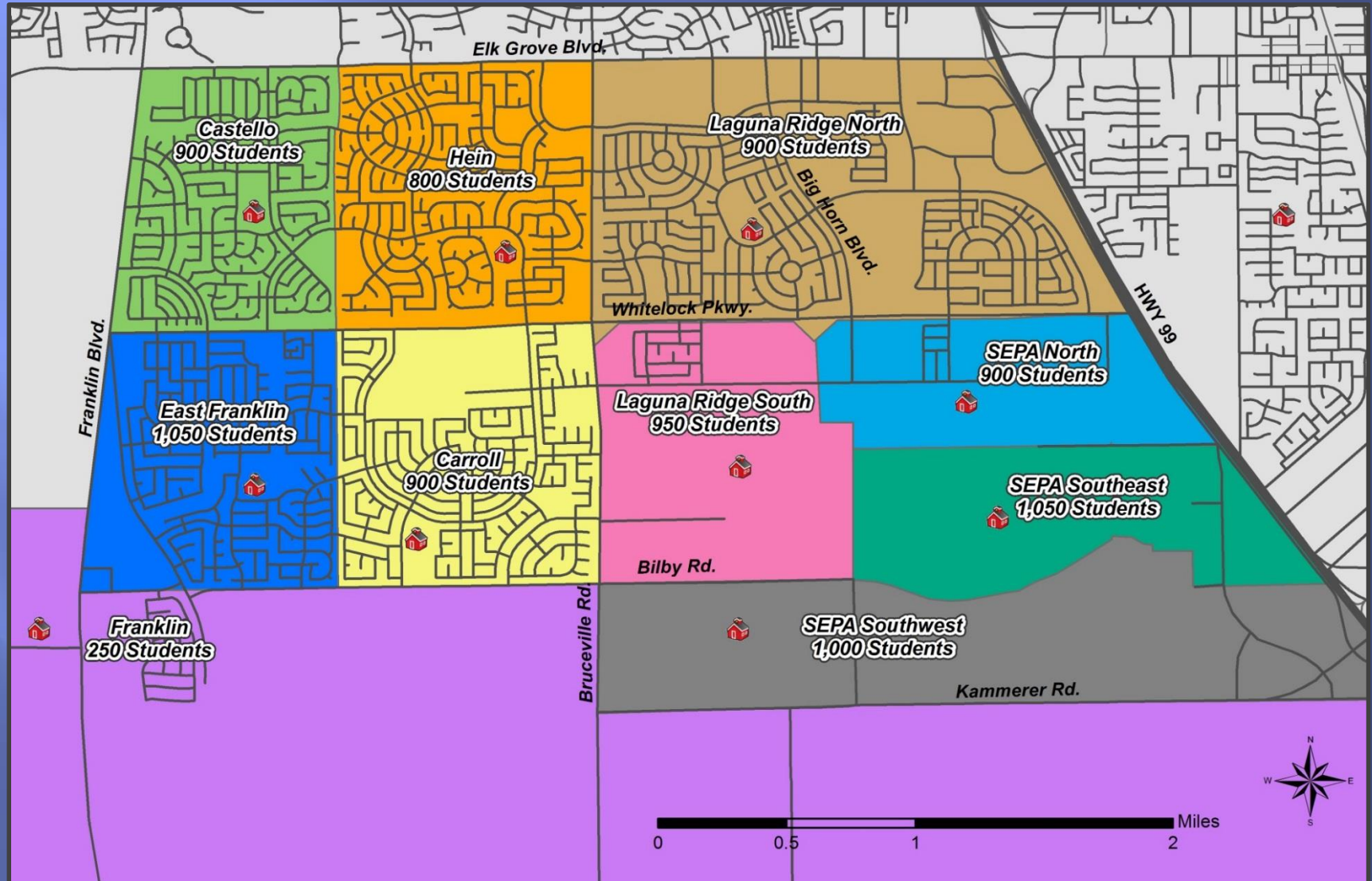
Southwest Region Projected Residing Students Recommended Boundary

School Name	Capacity		Projected Residing Students*		
	Traditional	YRE	2017-18	2018-19	2019-20
Carroll	1,114	1,478	1,017	978	914
Castello	984	1,296	895	902	902
Franklin	802	1,062	1,122	252 (1,123)	256 (1,078)
East Franklin	926	1,206	0	871 (0)	822 (0)
Hein	984	1,296	888	833	804
Laguna Ridge North	926	1,206	1,060	1,218	1,355
TOTAL	5,736	7,544	4,982	5,054	5,023

**Includes TK-6 General Education, PreK and SCC*

Southwest Region

Recommended Boundary – At Build-Out



Southwest Region

Estimated Residing Students at Build-Out

School	Projected PreK-6 Residing Students
Carroll*	900
Castello*	900
Franklin*	250
East Franklin*	850
Hein*	800
Laguna Ridge North^	900
Laguna Ridge South^	950
SEPA North^	900
SEPA Southeast^	1,050
SEPA Southwest^	1,000
Total Southwest Region	8,500

*2019-20 Projected PreK-6 student, including SCC

^Projected PreK-6 students, including SCC at
BUILDOUT of all current land use plans

Timeline

- ▣ Presented information to Board – May 3, 2016
- ▣ Community meetings held:
 - Sunrise Elementary – May 23, 2016
 - Franklin Elementary – May 24, 2016
 - Arlene Hein Elementary – June 15, 2016
- ▣ Meetings held with staff at all affected schools:
 - Sunrise Elementary – May 17, 2016
 - Franklin Elementary – May 23, 2016
 - Arlene Hein Elementary – June 8, 2016
- ▣ Draft plan to Board – August 16, 2016
- ▣ Board approval – September 6, 2016
- ▣ Communication to affected families
- ▣ New boundaries effective for the 2017-18 school year

QUESTIONS?

FEEDBACK?