

Milpitas High School

Board of Education – Programming for Gym and
Performing Arts Center

April 28, 2020

meet your team



Travis Kirk

Bond and Facilities
Director



Walter Estay

AIA, LEED AP BD+C
EDU Managing
Director



Maria Madrigal

AIA
Project Architect



Helen Pierce

AIA, LEED AP
Design Director



agenda

process overview

schedule

meetings & stakeholder involvement

programming

goals

gym and fitness center program

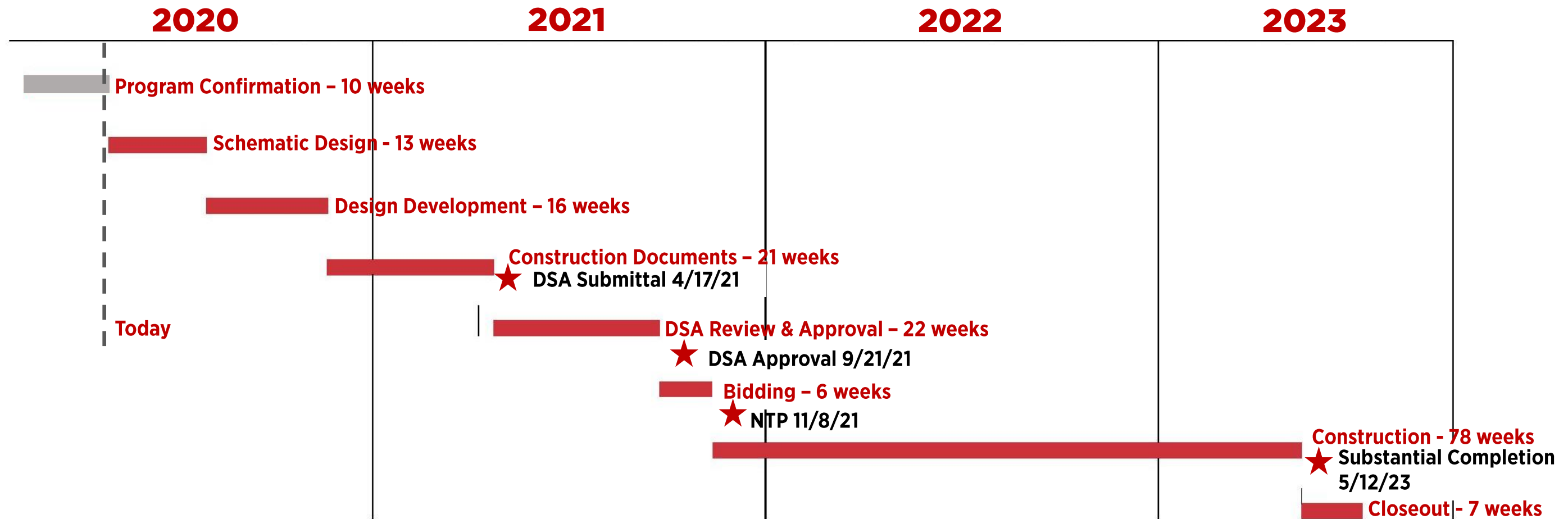
performing arts center program

questions & closing

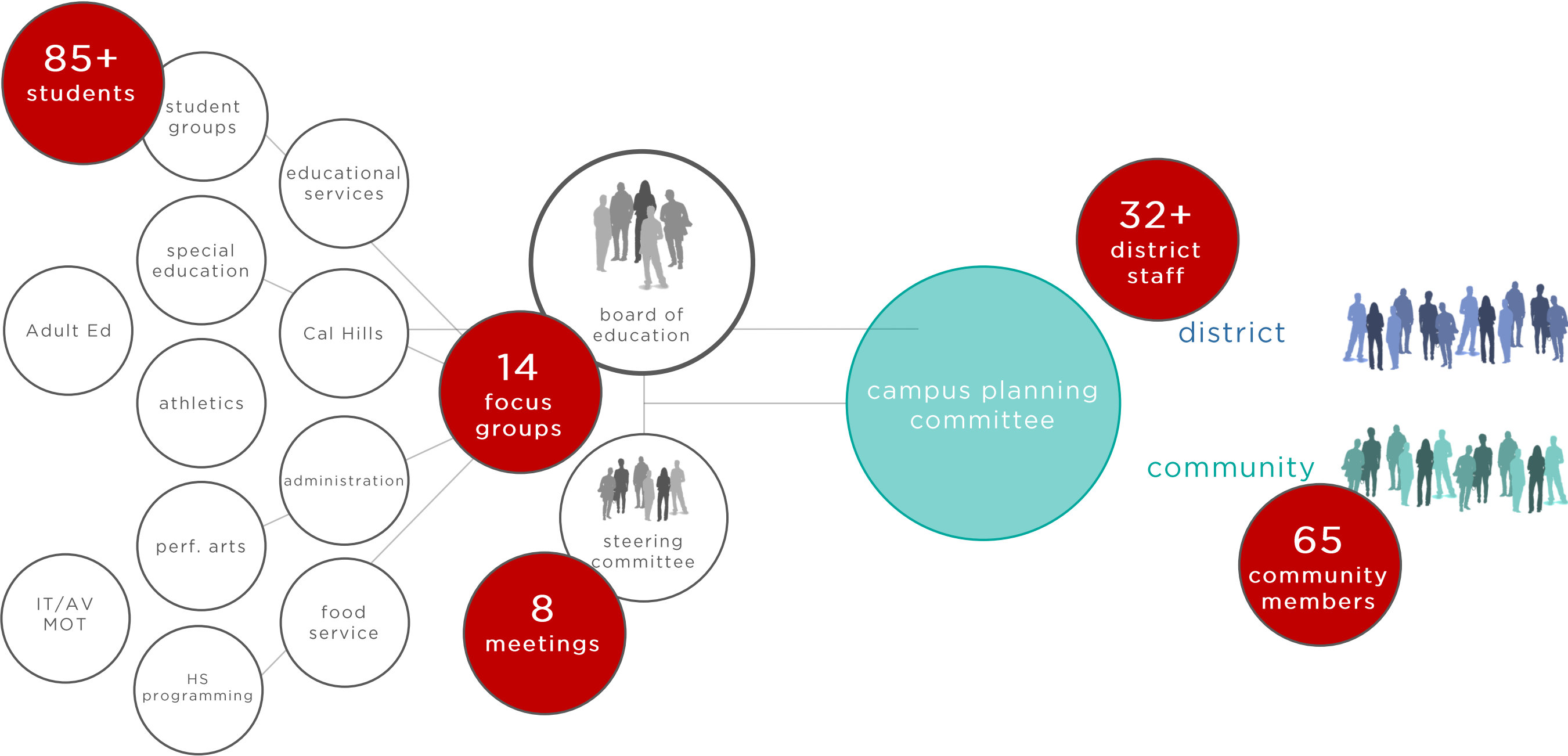
The background of the slide is a photograph of rolling green hills under a clear blue sky. Several tall, thin communication towers are visible on the peaks of the hills. In the foreground, there are some palm trees and other greenery. The title 'Process Overview' is centered over the middle of the image in a large, white, sans-serif font.

Process Overview

project schedule



stakeholder involvement – master plan



stakeholder involvement

- kick off meeting
- programming meeting #1
- programming meeting #2
- programming meeting #3
- programming meeting #4

Virtual online meetings have had almost 100% attendance rate

lpa

district

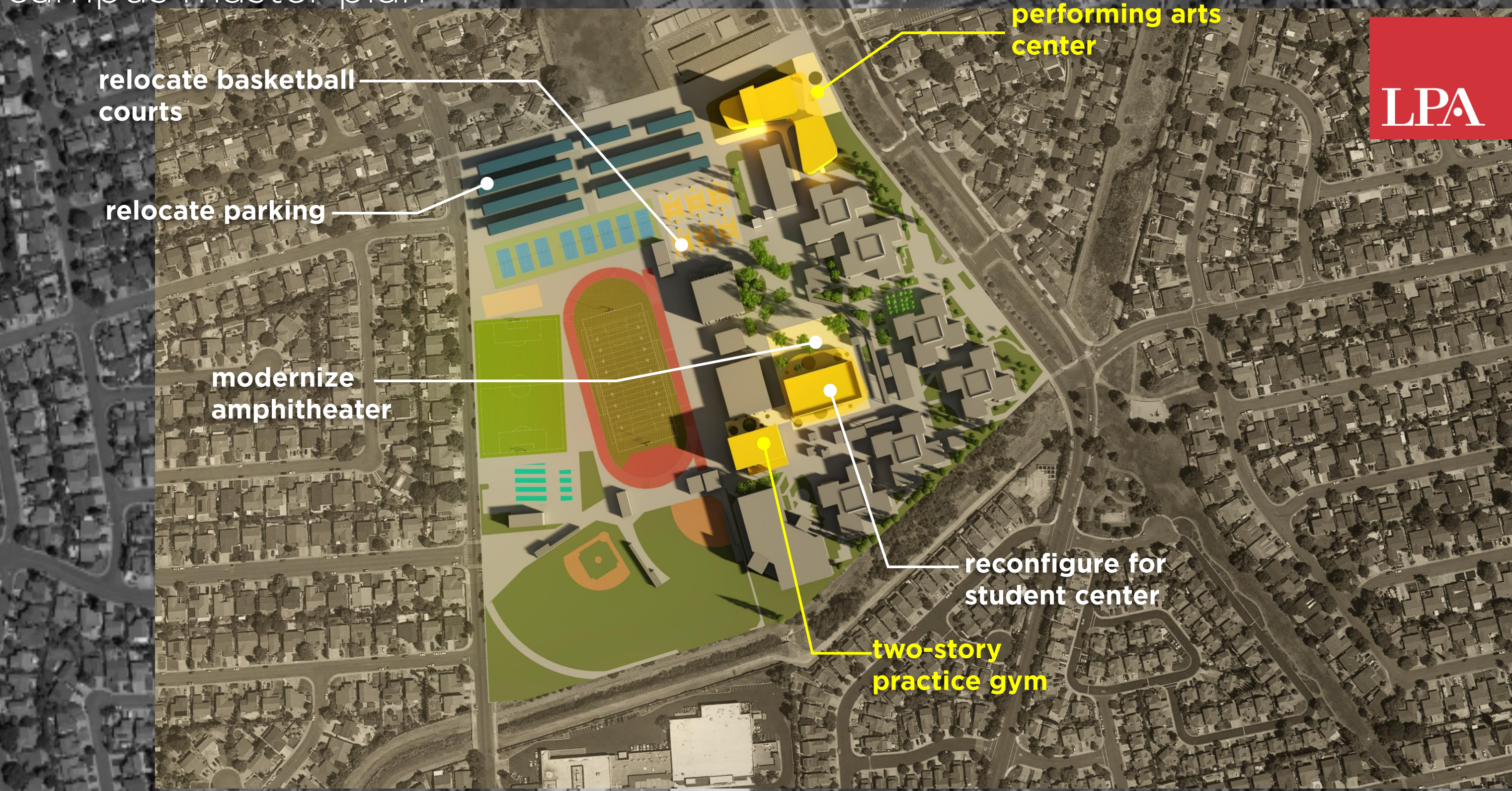


Programming

Milpitas High School - Project Goals

- relieve congestion
- provide a public face to performing arts building
- be a community resource
- safe / secure and student centric spaces
- support current and future physical education and athletic needs
- celebrate a diverse community

campus master plan



relocate basketball courts

relocate parking

modernize amphitheater

performing arts center

reconfigure for student center

two-story practice gym



scope of work

LPA

performing arts center

- no changes

fitness center

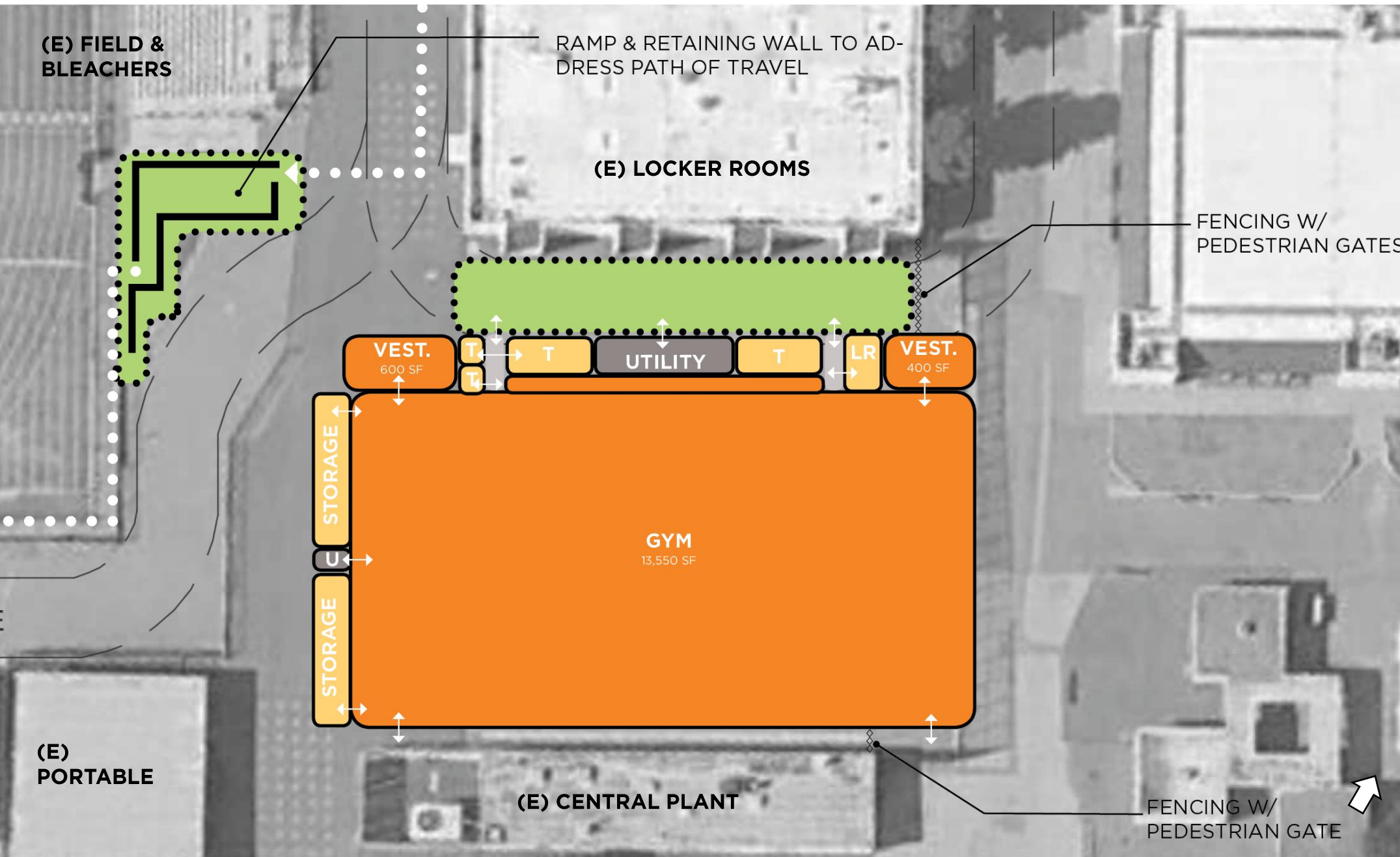
- weight room & exercise room moved to fitness center
- trainer's room added to fitness center

one story practice gym

- gym revised to 1-story building with more courts

gym & fitness center

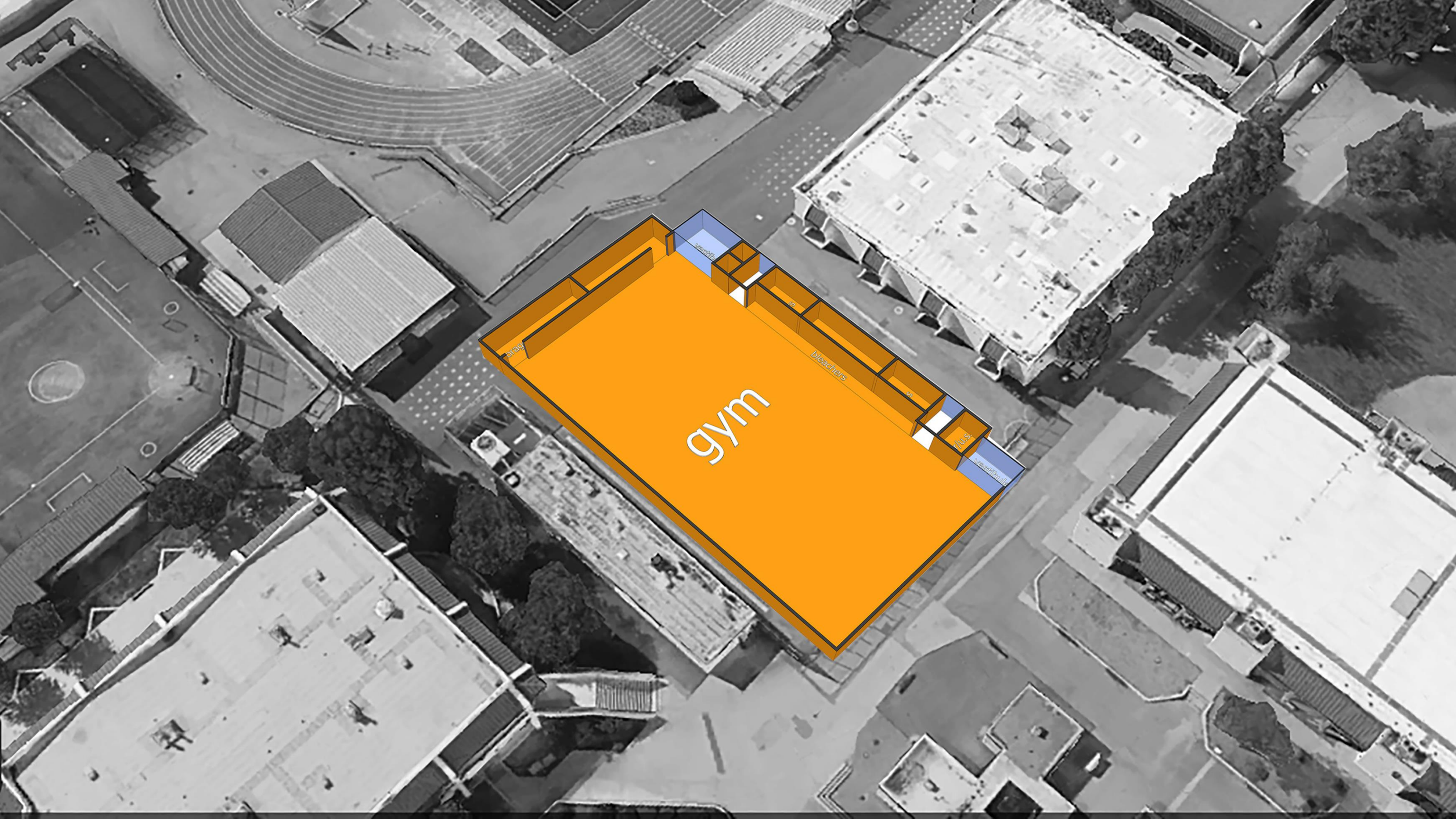
program – second gym



- GYM
athletics & PE
- VESTIBULES
- GYM SUPPORT
athletics & PE storage, toilets, laundry room
- UTILITY
custodial, electrical, data, fire riser

TOTAL AREA: 17,900 SF

 Outdoor improvement



gym





bleachers

restroom

water fountain

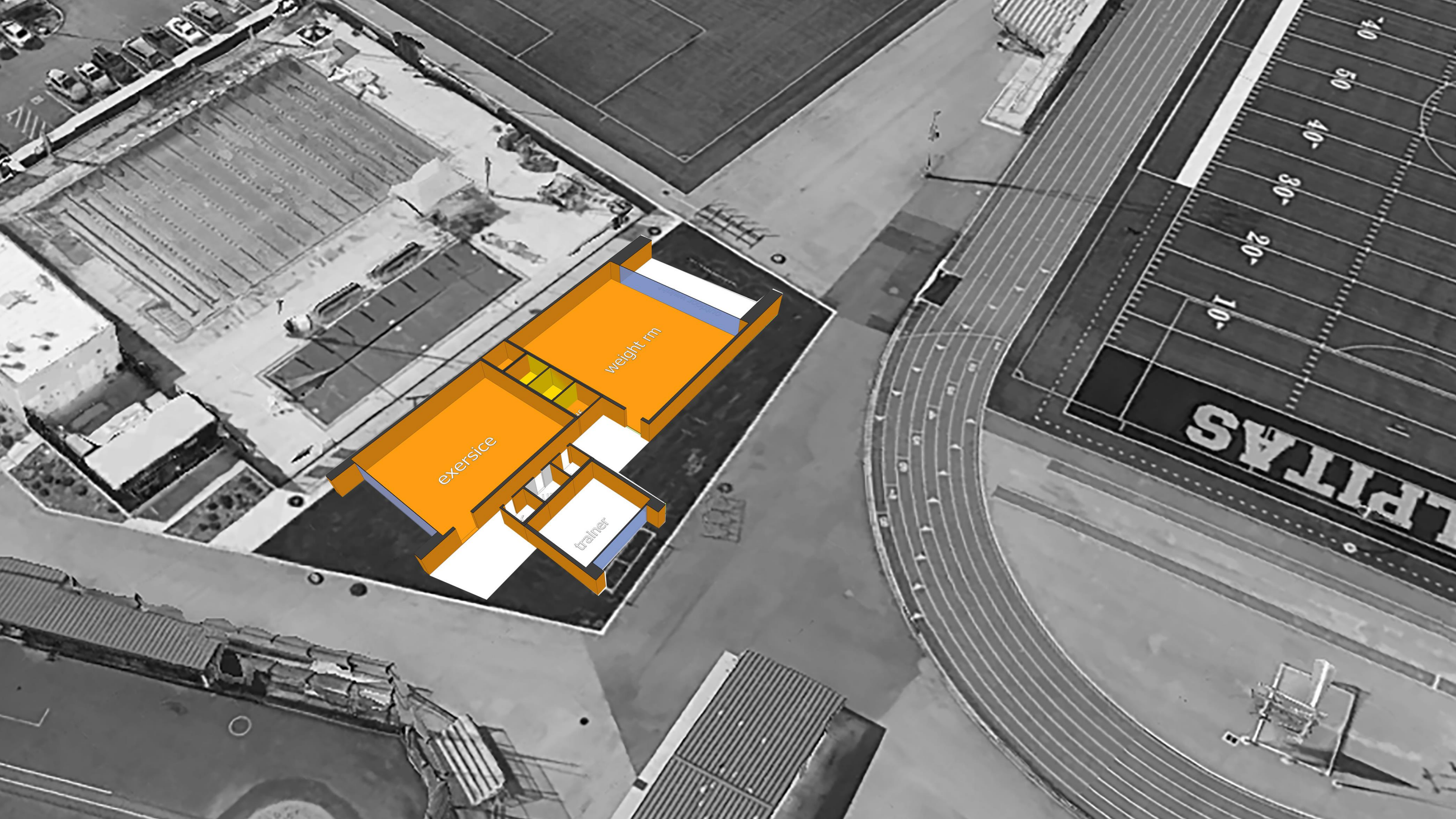
program – fitness center



-  WEIGHT ROOM
athletics & PE teaching
-  EXERCISE ROOM
athletics & PE teaching
-  FITNESS CENTER SUPPORT
storage & toilets
-  TRAINER'S ROOM
athletics and physical training
-  UTILITY
custodial, electrical, data, fire riser

TOTAL AREA: 6,800 SF

 Outdoor improvement



exersice

weight rm

trainer

performing arts center



(E) PARKING

(E) BLDG
K

(E) PORTABLES



program – performing arts center



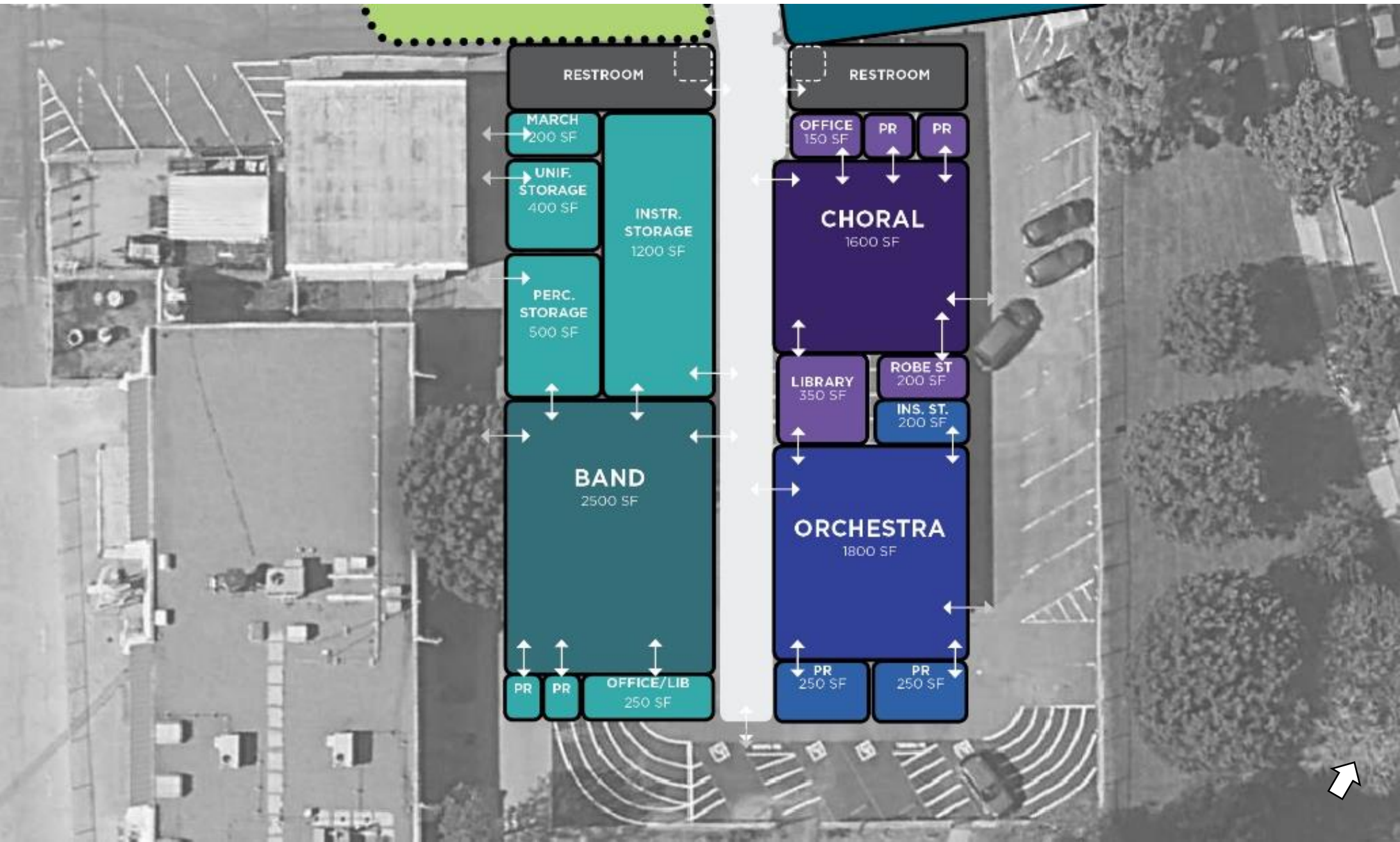
- MAIN THEATER
seating, orchestra pit, control room
- LOBBY
waiting area, concessions, tickets
- STAGE
- BLACK BOX
teaching (drama) & smaller performance
- PERFORMER SUPPORT
design tech classroom, dressing rooms
- UTILITY
custodial, electrical, data, fire riser, restrooms

TOTAL AREA (THEATER):

19,500 SF

 Outdoor improvement

program – performing arts center

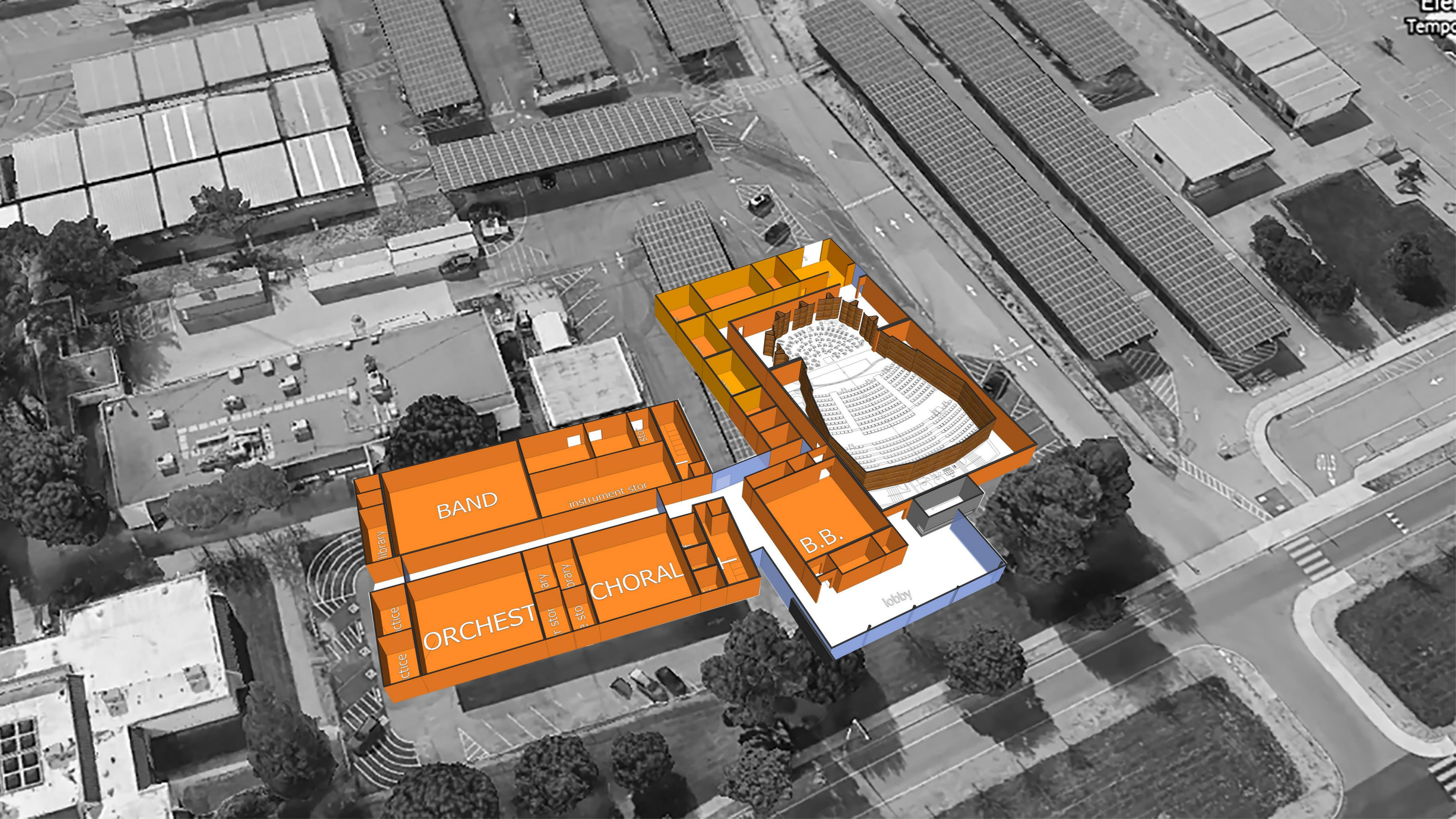


- BAND CLASSROOM
- BAND SUPPORT
practice rooms, office/library, instrument storage, marching band & uniform storage
- CHORAL CLASSROOM
- CHORAL SUPPORT
office, practice rooms, robe storage, library
- ORCHESTRA CLASSROOM
- ORCHESTRA SUPPORT
practice rooms, library, instrument storage
- UTILITY
custodial, electrical, data, fire riser

TOTAL AREA (PERFORMING ARTS CLASSROOMS):

16,200 SF

Outdoor improvement



BAND

instrument stor

library

ctice

ctice

ORCHEST

ary

rary

1 stor

2 sto

CHORAL

B.B.

lobby



Changing Lives by Design™