

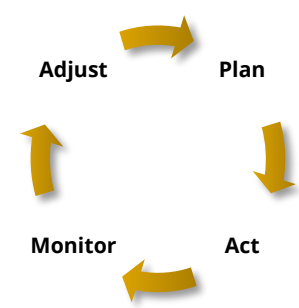
Transportation During Covid-19 Guidelines

June 17, 2020

Objectives

1. Share Sacramento County Office of Education (SCOE) and Sacramento County Public Health (SCPH) guidelines for school transportation under Covid-19
2. Share the impacts of these guidelines and our reduced capacity for transportation

Planning



1. 2020-2021 Fleet and Driver Capacity

2. Implementation of SCOE and SCPH guidelines

3. Adjusted capacity

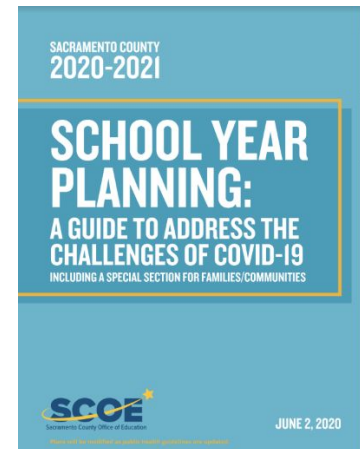
4. NUSD Mandated Needs for 2020-2021 and additional Programmatic Needs

Context

- NUSD provides mandated transportation for Special Education
- NUSD also provides Transportation service for some students at Natomas Middle, Career Technical Education, LGA and NP3 charters
- NUSD has had a shortage of bus drivers for the past few years due to a statewide shortage of drivers.
- 3 vacant bus driver positions (that have been unfilled for over a year) were recently reduced in the budget after consolidation of some Special Education routes.

Context

- A Typical large Bus holds up to 78 students on Average under normal circumstances
- SCOE and SCPH guidelines impact this by a factor as much as 1/6 of normal capacity
 - A bus that would normally hold 78 students can now hold 13 at maximum under the guidelines



Guidance

Transportation:

- What safety measures will need to be in place for bus drivers and students?

SCPH: To achieve social distancing, students should be seated one student per every other row. It is preferable for drivers to wear masks but there needs to be consideration for visibility and ease of

Reopening and Course Offerings

- What courses can be offered in person once schools reopen? What are the guidelines and recommendations for the following courses?

SCPH:

- Music – No wind/horn, strings/percussion/piano unless adequate physical distancing is possible. Same with Orchestra and band
- Physical Education – YES, with social distancing

Swimming
(one person per lane)
Water polo
Diving
Wrestling
Volleyball
Basketball
Golf - Varsity
Tennis
• Football
• Soccer
• Cross Country
probable
• Track and Field
probable
• Baseball
• Cheerleading

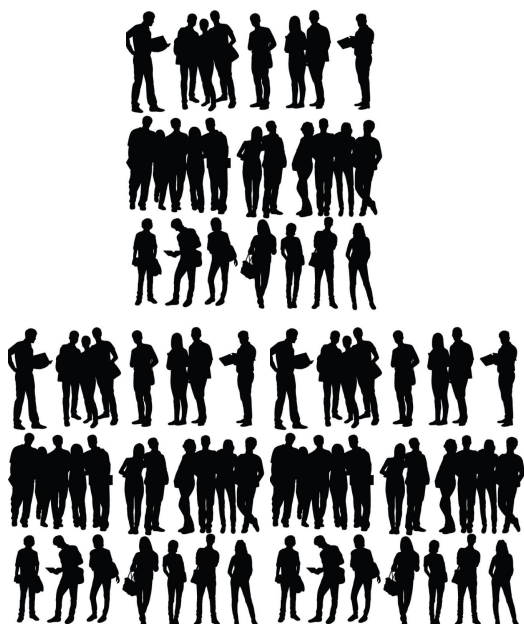
Transportation:

- What safety measures will need to be in place for bus drivers and students?

SCPH: To achieve social distancing, students should be seated one student per every other row. It is preferable for drivers to wear masks but there needs to be consideration for visibility and ease of breathing.

Comparison

Student Group

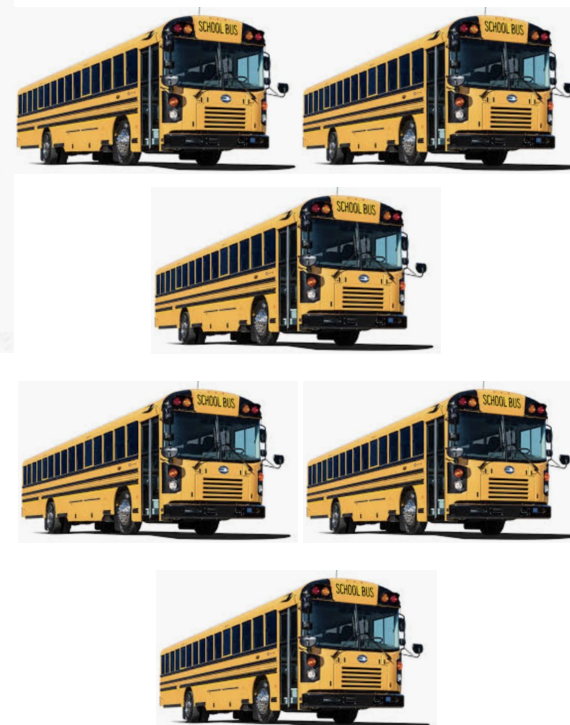


Transportation Needed for the same cohort of students

Pre Social Distancing



With Social Distancing

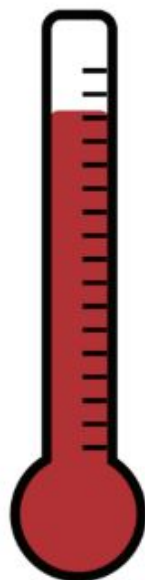


WHEN SCHOOLS RESUME IN THE FALL, THEY WILL LOOK DIFFERENT.

HERE IS WHAT YOU CAN EXPECT:

Schools will reopen with a continuum of options that include on-campus and remote learning.

The following health and safety guidance has been recommended by the Sacramento County Public Health for the reopening of schools based on current information and will be updated as the situation changes.



Screening at Home

- Families are recommended to take temperatures daily before going to school. Anyone with a fever of 100.4 F or higher should not go to a school site.
- Students and adults should also screen themselves for respiratory symptoms such as cough and shortness of breath prior to coming to school each day. Students and adults experiencing those symptoms should not attend school.



Arriving at School

- Staff may be wearing face coverings.
- Students will arrive on buses with fewer students.
- Parents and visitors may have limited access to the school campus.
- It is likely that arrival and dismissal times may vary depending on grade level.

June 2, 2020 - Plans will be modified as public health guidelines are updated.

Transition to K-8

As NUSD has transitioned to K-8 sites, the vast majority of students now have access to 6th-8th grade in their neighborhood or nearby, reducing the need for transportation to Natomas Middle School that previously existed.

Capacity

- Given the social distancing guidelines, it will take all available busses and drivers to transport our special education students for home to school transportation.
- Natomas Middle School and Charter transportation will not be available within these guidelines.
- Career Technical Education transportation will still be available as the times needed are not during peak home to school transportation.
- Field trips are not recommended and would require as many as six times the number of busses to transport students making them virtually impossible to schedule during the school day.

Scenario: Capacity Modified

- If Social Distancing guidelines are followed for Medically Fragile Special Education students and modified to one student per seat for the remainder of our special education students, we may be able to provide transportation to about $\frac{1}{3}$ of the number of students transported last year at Natomas Middle, LGA and NP3 at one student per seat.

Next Steps

- Finalize the special Education routes for mandated transportation
- Determine which busses will be available after all mandated transportation is routed
- Work with our leaders to create a process for sign ups to ride at 1 student per seat
- Continue our cleaning protocol of using our disinfecting machines midday and in the evening on all busses

Questions