

Los Altos School District

Demographic Trends and

Forecasts

Shelley Lapkoff, Ph.D.

Jeanne Gobalet, Ph.D.

Lapkoff & Gobalet Demographic Research, Inc.

www.Demographers.com

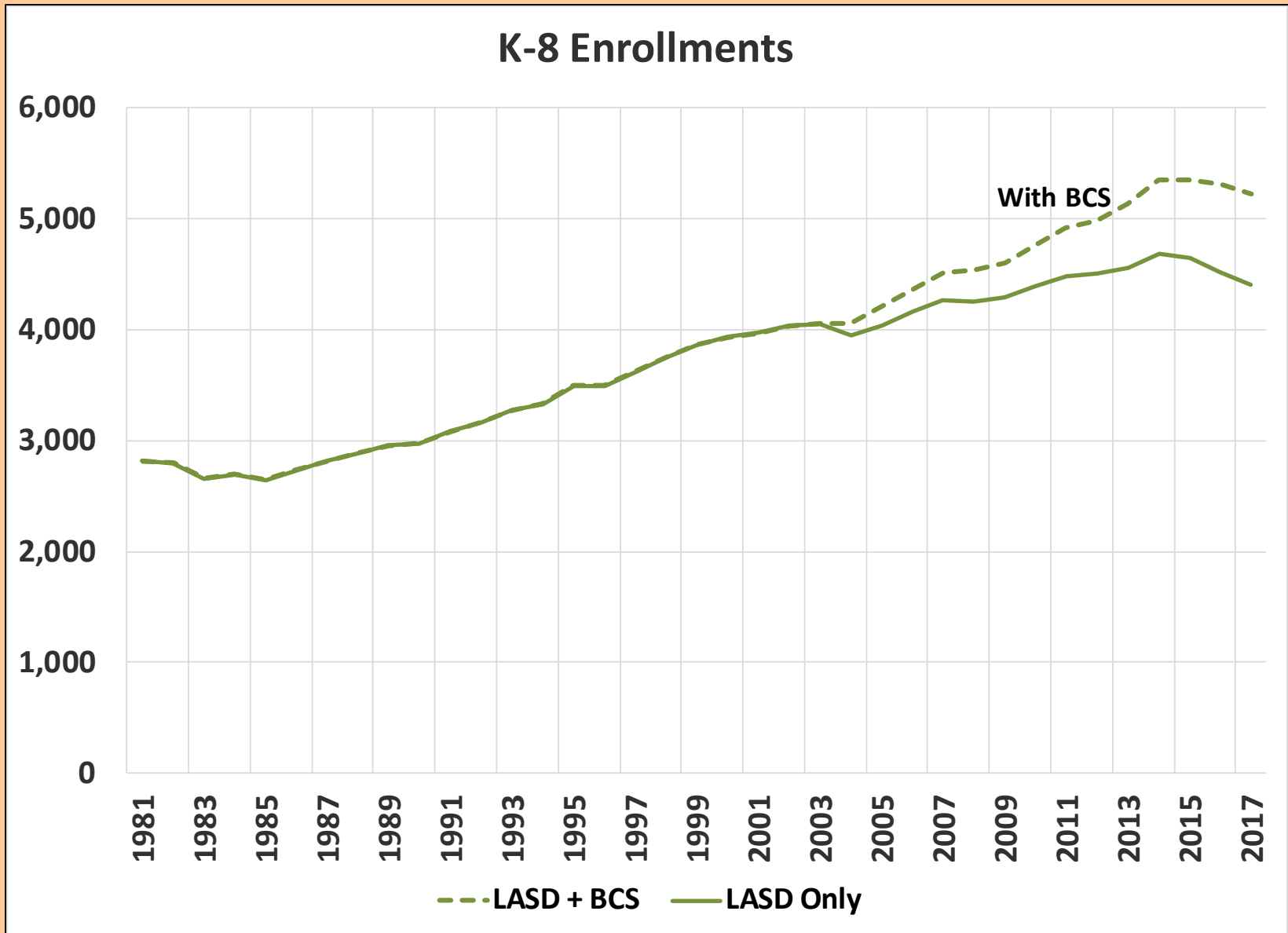
May 14, 2018



Highlights

- **After decades of growth, LASD-only enrollments have declined for three consecutive years.**
- **The new Medium forecast shows stable enrollment (for both LASD-only and LASD+BCS).**
- **The geographic distribution of students has been shifting northward. This is expected to continue: all proposed housing growth is on both sides of and north of El Camino Real.**
- **When San Antonio Center East is redeveloped, the project could add up to 800 additional students.**
- **Kindergarten enrollments have generally declined since 2010. However, the Fall 2017 cohort was large. Registrations for Fall 2018 kindergarten suggest a very small class.**
- **Migration / grade progressions have been low for two consecutive years (fewer students added between school years).**
- **BCS is approaching its 900-student limit; they told us they intend to grow by 300 students starting in Fall 2019.**

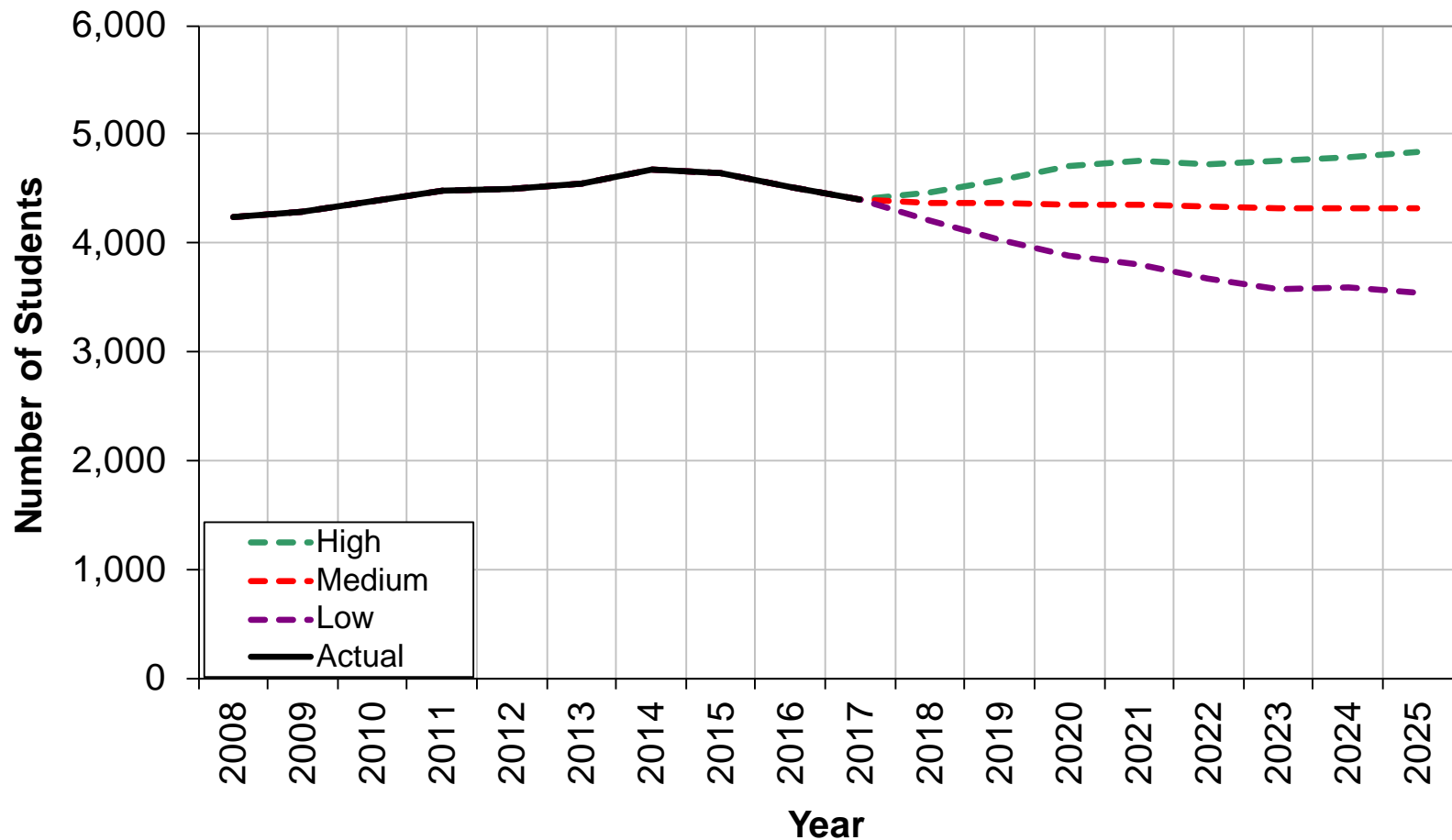
After decades of continuous growth, K-8 enrollments have declined recently



LASD-only Forecasts:

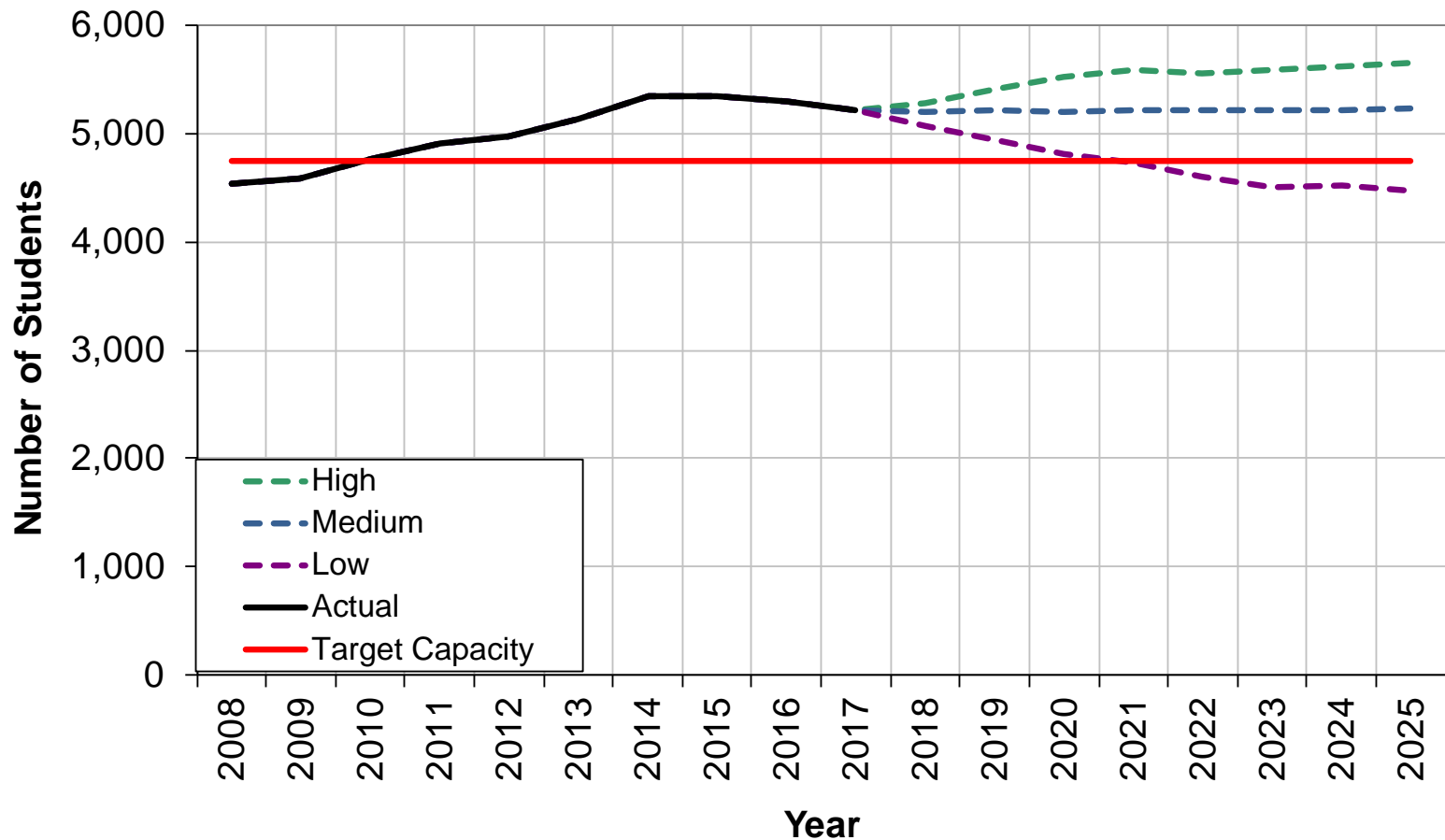
Medium forecast shows stable enrollments

LASD K to 8 Forecast Scenarios
Includes IDTs, Excludes BCS



LASD+BCS Forecasts: The Medium and High forecasts exceed Target Capacity

LASD+BCS K to 8 Forecast Scenarios
Excludes enrollment impact from San Antonio Center redevelopment
and future housing that has not yet been proposed



New and Future Housing in Los Altos School District

Legend

- Elementary Attendance Area
- Freeway/Highway
- Major Road
- Street
- Elementary School

Building Status

- Approved
- Completed
- Proposed

Total Number of Units

- 2,500
- 1,270
- 20

Map Labels:

- Classics at Monroe Place (Palo Alto Bowl)
- 400 San Antonio Rd/ Prometheus
- 2700 El Camino Apts
- Domus
- Carmel The Vlg/ SA Ctr (Sears)
- 2580 & 2590 California St
- 394 Ortega Ave Apts
- East of San Antonio Ctr
- 4880 El Camino Real MFUs
- 4846-4856 El Camino Real MFUs
- Colonnade/ LA Garden Supply
- Colonnade/ Sherwood Gateway
- Santa Rita
- Almond
- Covington
- Springer
- Gardner Bullis
- 100 First St Condos
- Villas on 3rd St

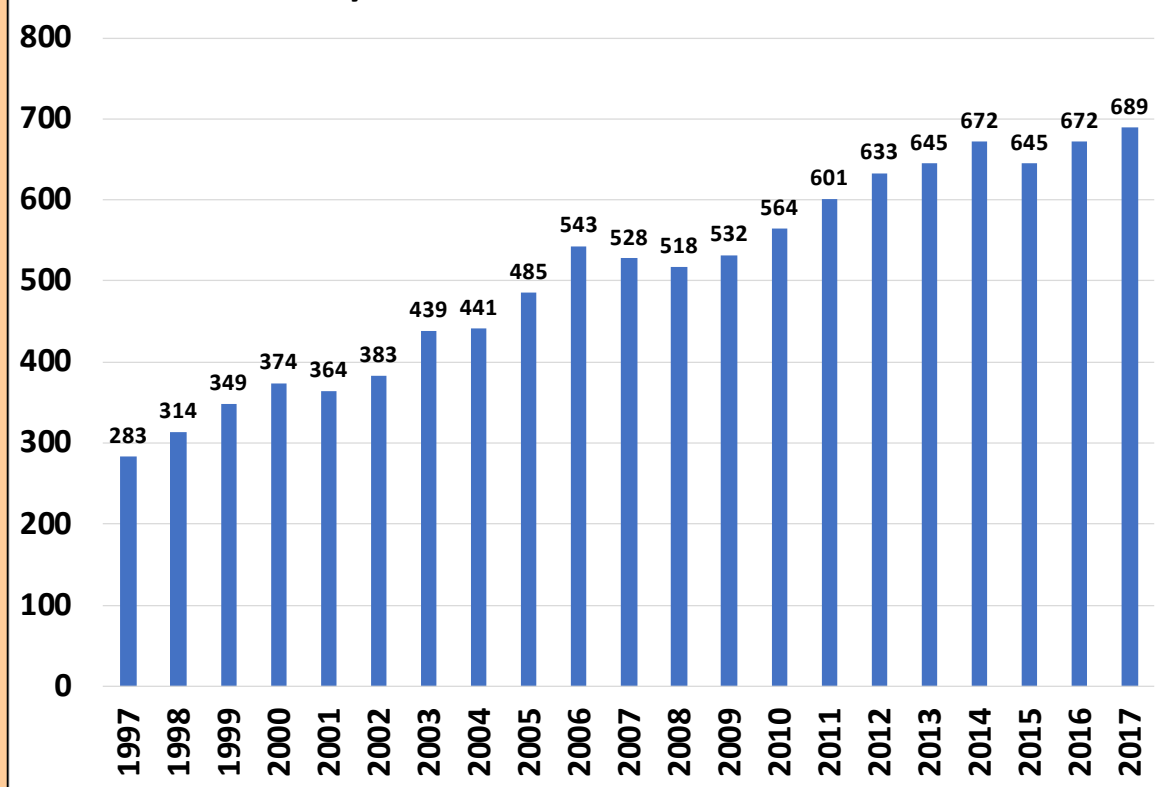
Map Features:

- El Camino Real
- Foothill Expy
- Central Expy
- N San Antonio Rd
- N El Monte Ave
- S El Monte Ave
- El Monte Ave
- N Springer Rd
- S Springer Rd
- Miramar Ave

Source: Lapkoff & Gobalet Demographic Research, Inc. 5/9/18
www.Demographers.com

The geographic distribution of enrollments has changed and will continue to change (from new housing north of El Camino Real)

LASD-Only Enrollments North of El Camino Real



- **All new housing developments we are tracking are on or north of El Camino Real – we expect between 80 and 342 additional students.**
- **When San Antonio Center is redeveloped, up to 800 additional students could live there.**

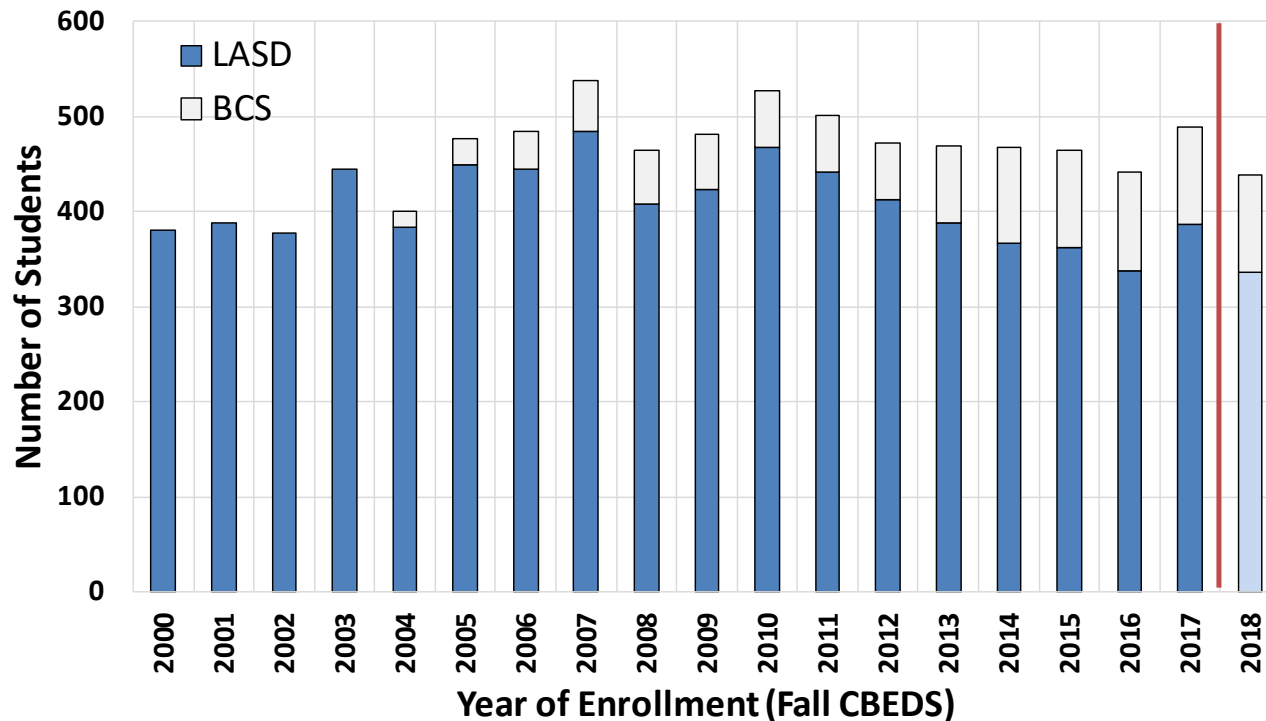
Future Housing

- **Between 80 and 342 students are expected from *identified* future projects**
- **In addition, San Antonio Center East could add 300 to 800 new students**
- **Other new housing is likely to be built in the future (but we don't have useful information yet)**

Forecast of Students in Proposed Developments							
Name/Address	City	# Units	Type	# BMR	Expected Enrollment		
					Low	Medium	High
400 San Antonio Rd	M.V.	583	apts	50	29	78	130
394 Ortega	M.V.	144	apts	10	7	18	30
2645 & 2655 Fayette Drive	M.V.	24	condos	0	5	6	7
4880 El Camino	Los Altos	24	MFU	3	1	4	6
4846-56 El Camino	Los Altos	35	Condos	11	5	12	18
2580-90 California	M.V.	641	apts	64	32	90	151
Total		1,451		138	80	208	342
San Antonio Center	M.V.	2,650	?	265	299	538	802

LASD-only kindergarten enrollment has mostly declined since 2010

Kindergarten Enrollment
Residents Only

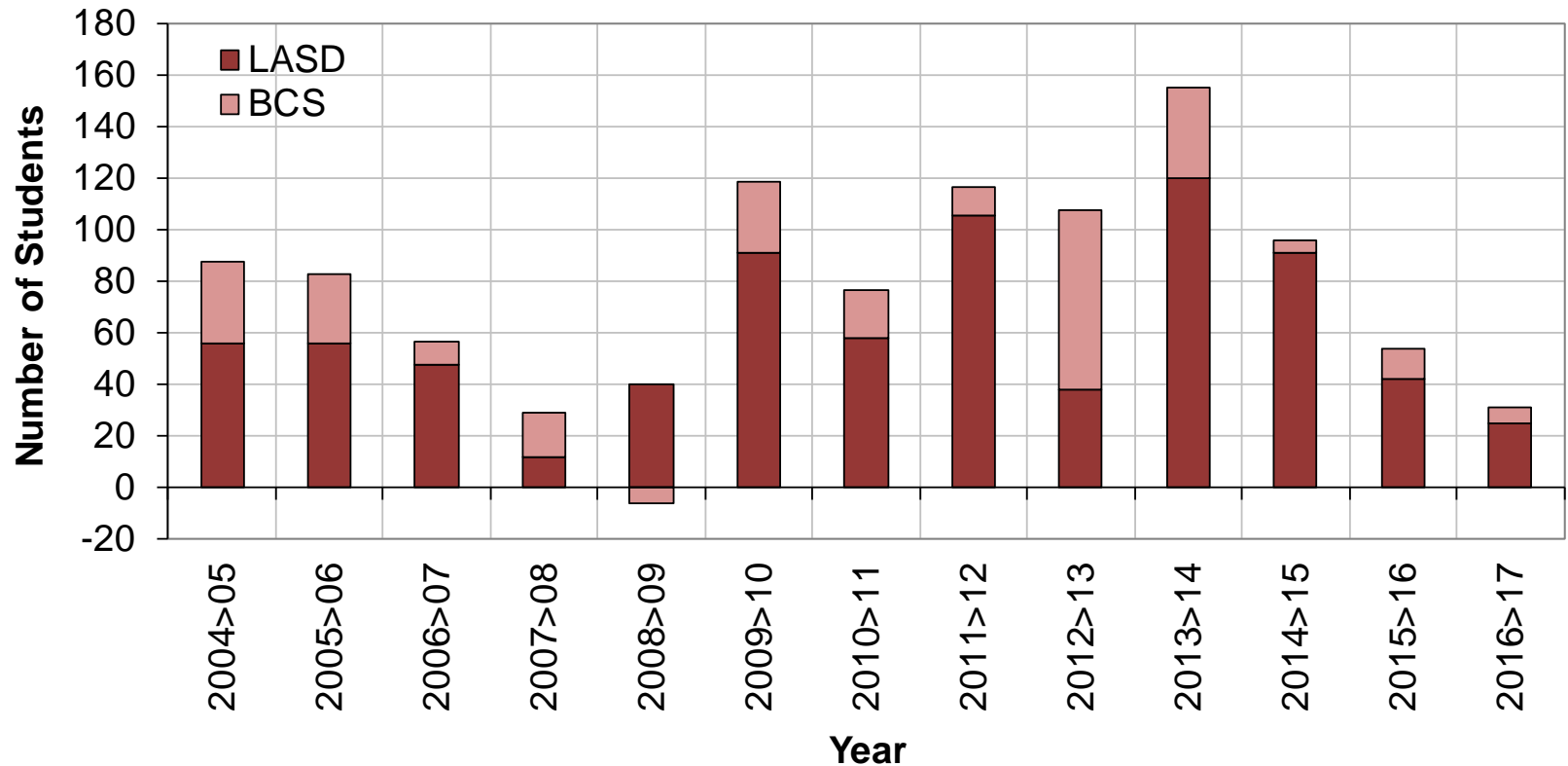


- **An exception to the decline: Fall 2017 had a large kindergarten classes**
- **We expect LASD to have one of the smallest kindergarten classes in Fall 2018**

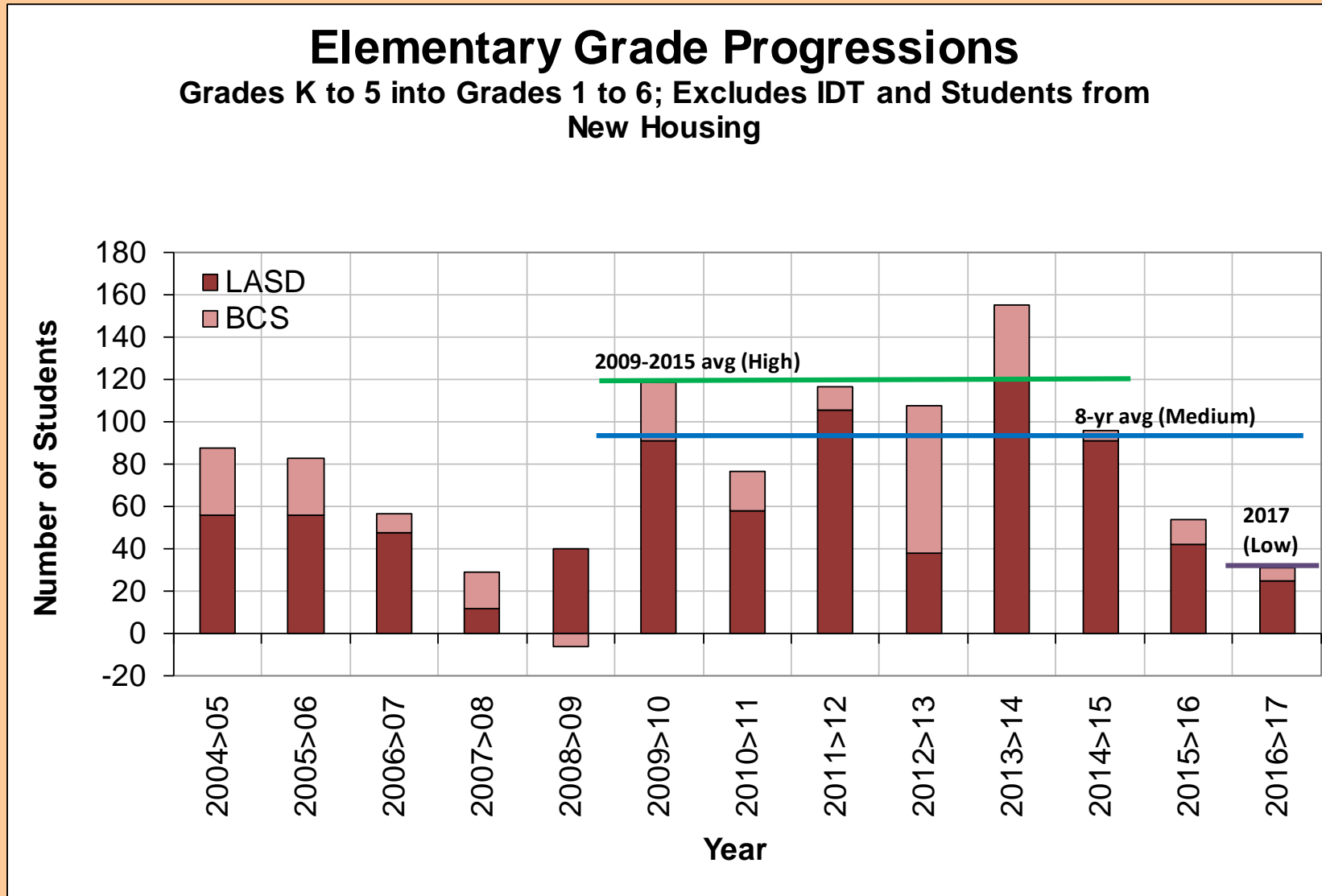
Elementary grade progressions were low in the last two pairs of years

Elementary Grade Progressions

Grades K to 5 into Grades 1 to 6; Excludes IDT and Students from New Housing

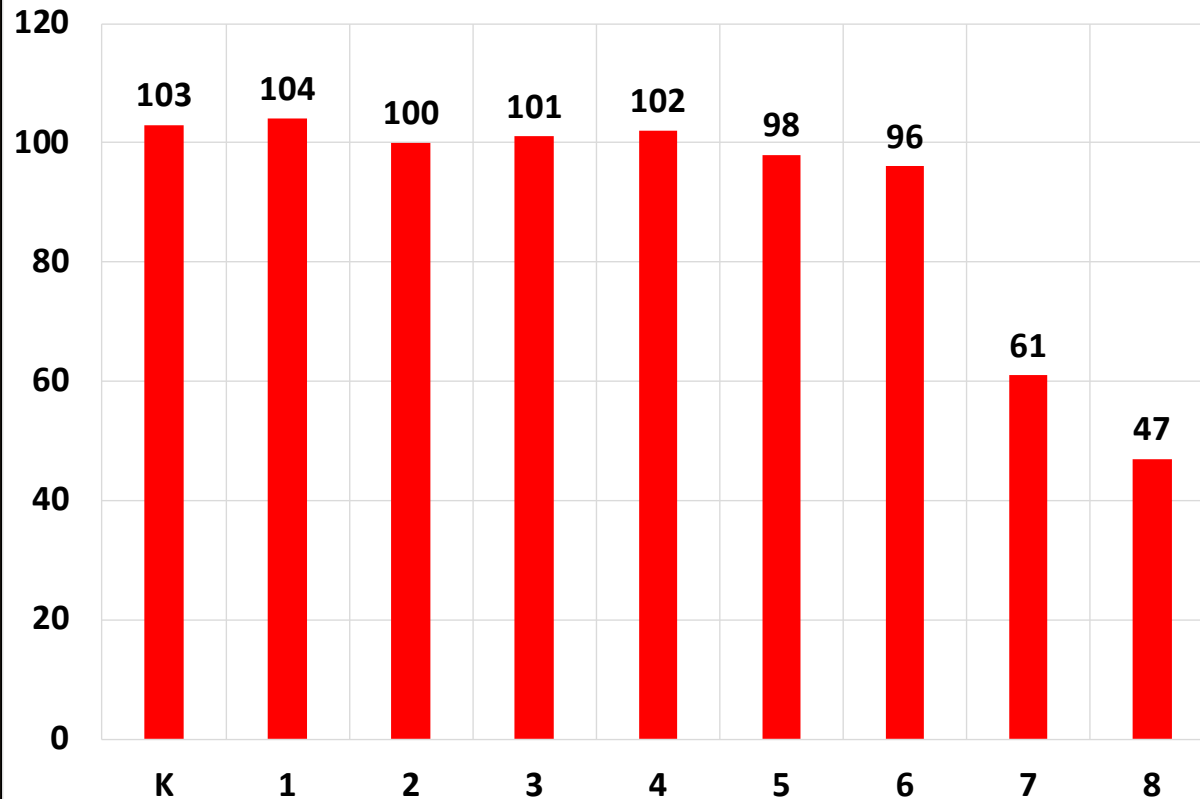


Elementary grade progression assumptions used in forecasts (High, Medium, Low)



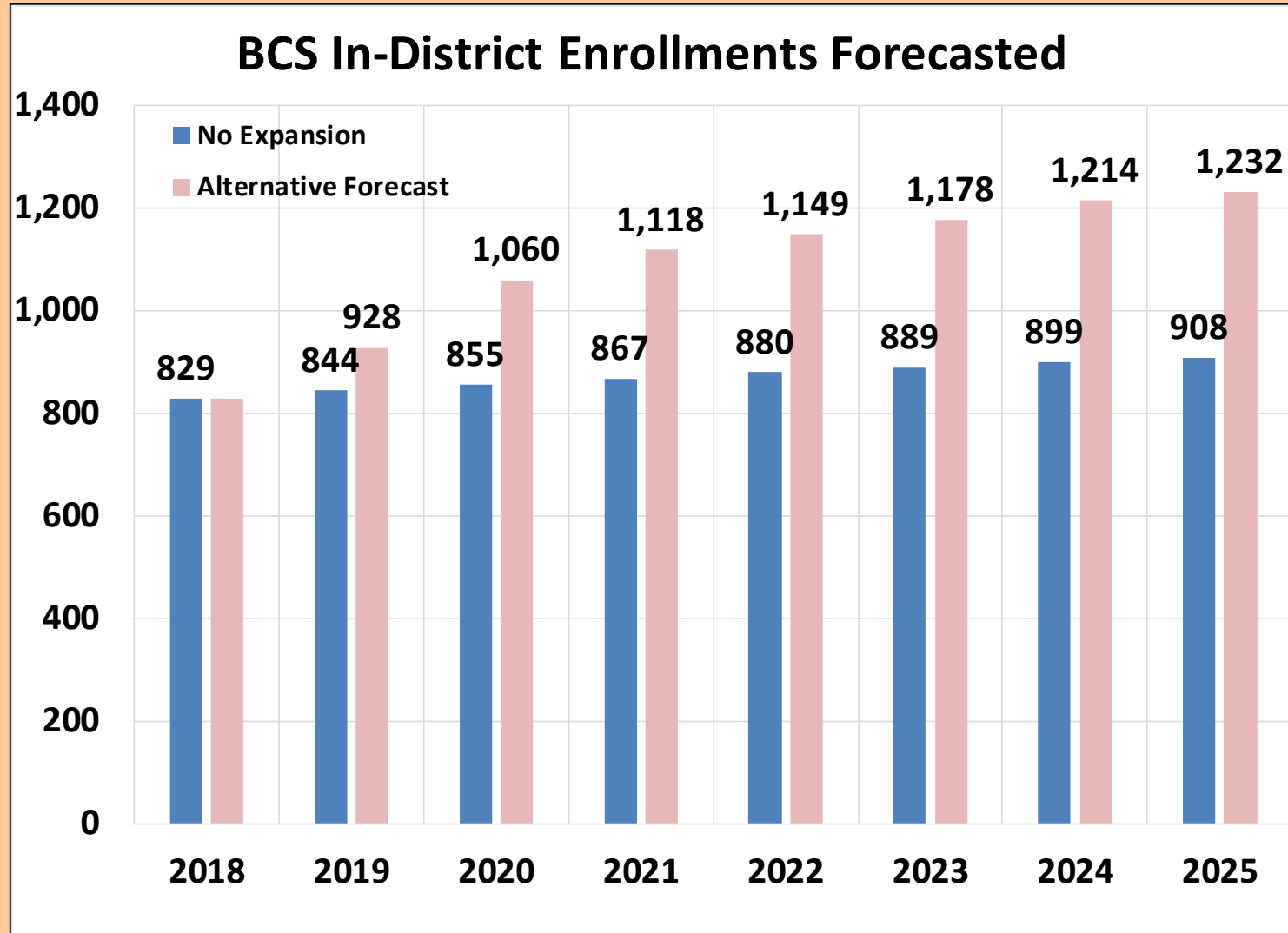
BCS In-district enrollments

Fall 2017 BCS In-District Enrollment



- **Except for the 7th and 8th grades, BCS enrollments appear to have stabilized at around 100 students per grade.**
- **We received a letter from BCS saying that they are planning to increase enrollments by 300 (next slide).**

BCS Forecasts with and without enrollment growth



LASD-Only Enrollment Forecast

LASD Enrollment Forecasts (Excludes BCS)

	2017	2018	2019	2020	2021	2022	2023	2024	2025	Enrollment Change 2017 to 2018	Enrollment Change 2017 to 2025
K to 6											
High forecast	3,277	3,332	3,482	3,537	3,566	3,598	3,644	3,606	3,605	55	328
Medium forecast	3,274	3,243	3,300	3,255	3,249	3,303	3,319	3,277	3,302	-31	28
Low forecast	3,274	3,145	3,092	2,964	2,879	2,817	2,770	2,702	2,702	-129	-572
7 ot 8											
High forecast	1,129	1,132	1,103	1,169	1,194	1,132	1,117	1,187	1,228	3	99
Medium forecast	1,129	1,123	1,066	1,095	1,102	1,034	1,002	1,043	1,023	-6	-106
Low forecast	1,129	1,056	945	926	925	857	813	886	838	-73	-291
K to 8											
High forecast	4,406	4,464	4,585	4,706	4,760	4,730	4,761	4,794	4,833	58	427
Medium forecast	4,403	4,366	4,365	4,350	4,351	4,337	4,322	4,320	4,325	-37	-78
Low forecast	4,403	4,201	4,037	3,890	3,804	3,674	3,583	3,587	3,540	-202	-863

If BCS grows by 300 students, then LASD-only enrollments are likely to decline by an equal or somewhat lesser number of students