

# Education Services Update

October 2, 2018



# Accountability Updates - NEW CA School Dashboard



# Accountability Updates - NEW CA School Dashboard



# Accountability Updates - NEW CA School Dashboard



# Accountability Updates - NEW CA School Dashboard

## *Student Group Details*

All Student Groups by Performance Level

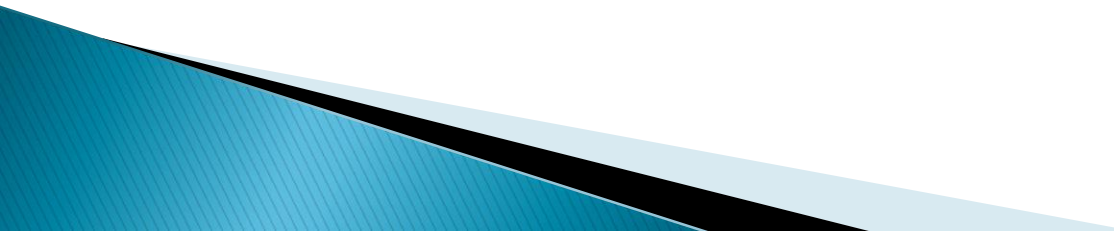
Total Number of Student Groups = 11



## Accountability Updates - Differentiated Assistance

- All LEAs are eligible based on **student group performance in each LCFF state priority area**
- Both state and **local indicator** results reported in the 2018 Dashboard will be used to identify districts and **COEs** for technical assistance

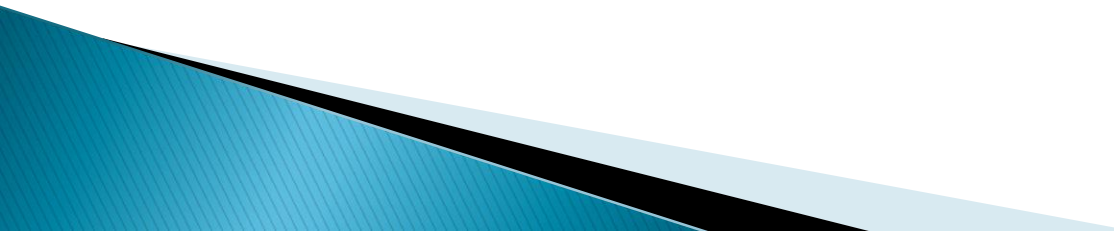
# Local Indicator – Priority 1

- ▶ Basic Services
  - ▶ Number of misassignment of teachers of English learners, total teacher misassignments and vacant teaching positions – 0
  - ▶ Number of students without access to their own copies of standards aligned instructional materials for use at school and at home – 0
  - ▶ Number of identified instances where facilities do not meet the “good repair” standard – 0
- 

# Local Indicator – Priority 2

- ▶ Implementation of State Standards

*1. Providing professional learning for teaching adopted curriculum or frameworks*

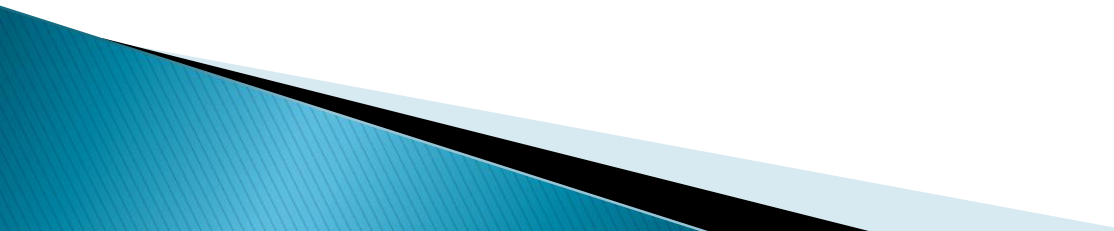
- ▶ ELA/ELD – Full Implementation
  - ▶ Mathematics – Full Implementation
  - ▶ NGSS – Beginning Development
  - ▶ History/Social Studies – Beginning Development
- 



# Local Indicator – Priority 2

- ▶ Implementation of State Standards

*2. Providing instructional materials for teaching adopted curriculum or frameworks*

- ▶ ELA/ELD – Full Implementation
  - ▶ Mathematics – Full Implementation
  - ▶ NGSS – Beginning Development
  - ▶ History/Social Studies – Beginning Development
- 

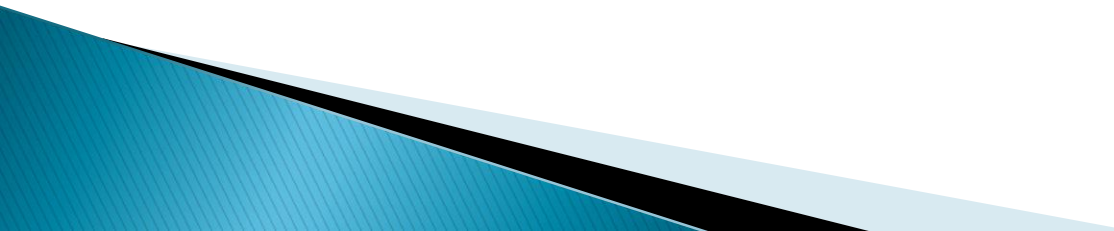
# Local Indicator – Priority 2

*3. Implementing policies to support staff in identifying areas to improve in delivering instruction*

- ▶ ELA/ELD – Initial Implementation
  - ▶ Mathematics – Initial Implementation
  - ▶ NGSS – Beginning Development
  - ▶ History/Social Studies – Beginning Development
- 

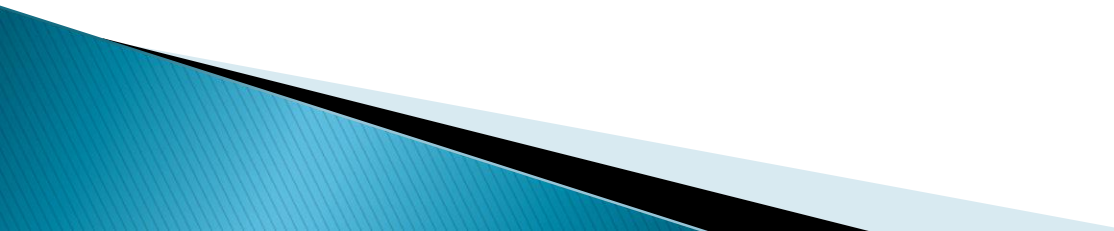
# Local Indicator – Priority 2

## *4. Progress implementing academic standards*

- ▶ Career Technical – Initial Implementation
  - ▶ Health Education – Initial Implementation
  - ▶ Physical Education – Beginning Development
  - ▶ Visual & Performing Arts – Beginning Development
  - ▶ World Language – Beginning Development
- 

# Local Indicator – Priority 2

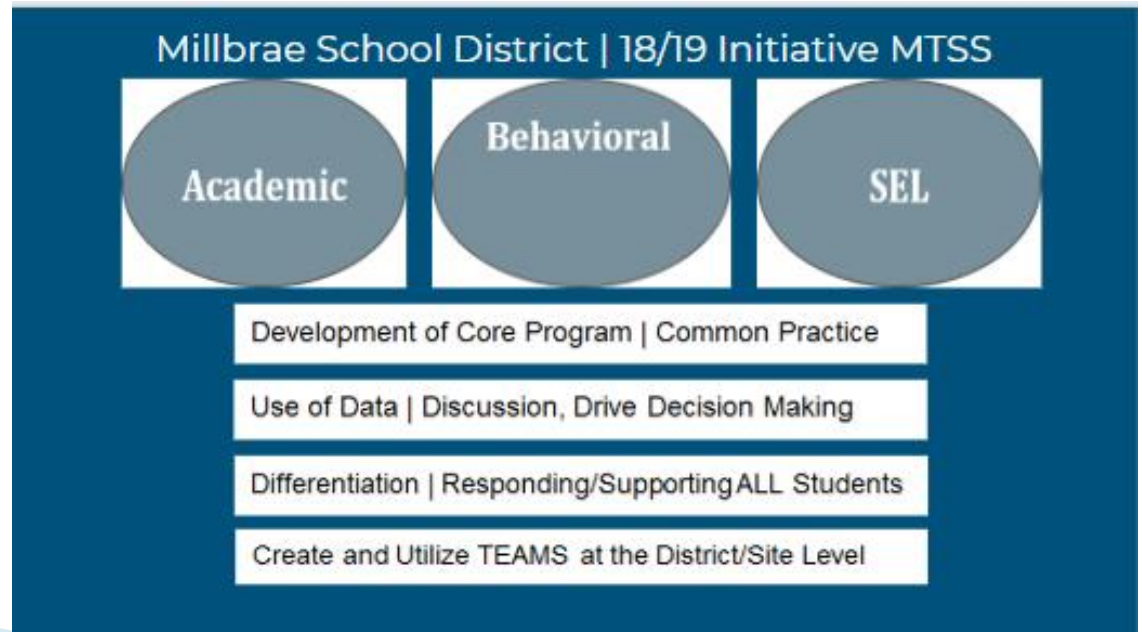
## *5. Engaging teachers and school administration*

- ▶ Identifying the professional learning needs of teachers and staff– Initial Implementation
  - ▶ Identifying the professional learning needs of individual teachers– Initial Implementation
  - ▶ Providing support for teachers on the standards they have not yet mastered– Initial Implementation
- 

# CA School Dashboard – Fall 2018



Alignment with our District Initiative



- ▶ Questions?
- ▶ Thank you!

