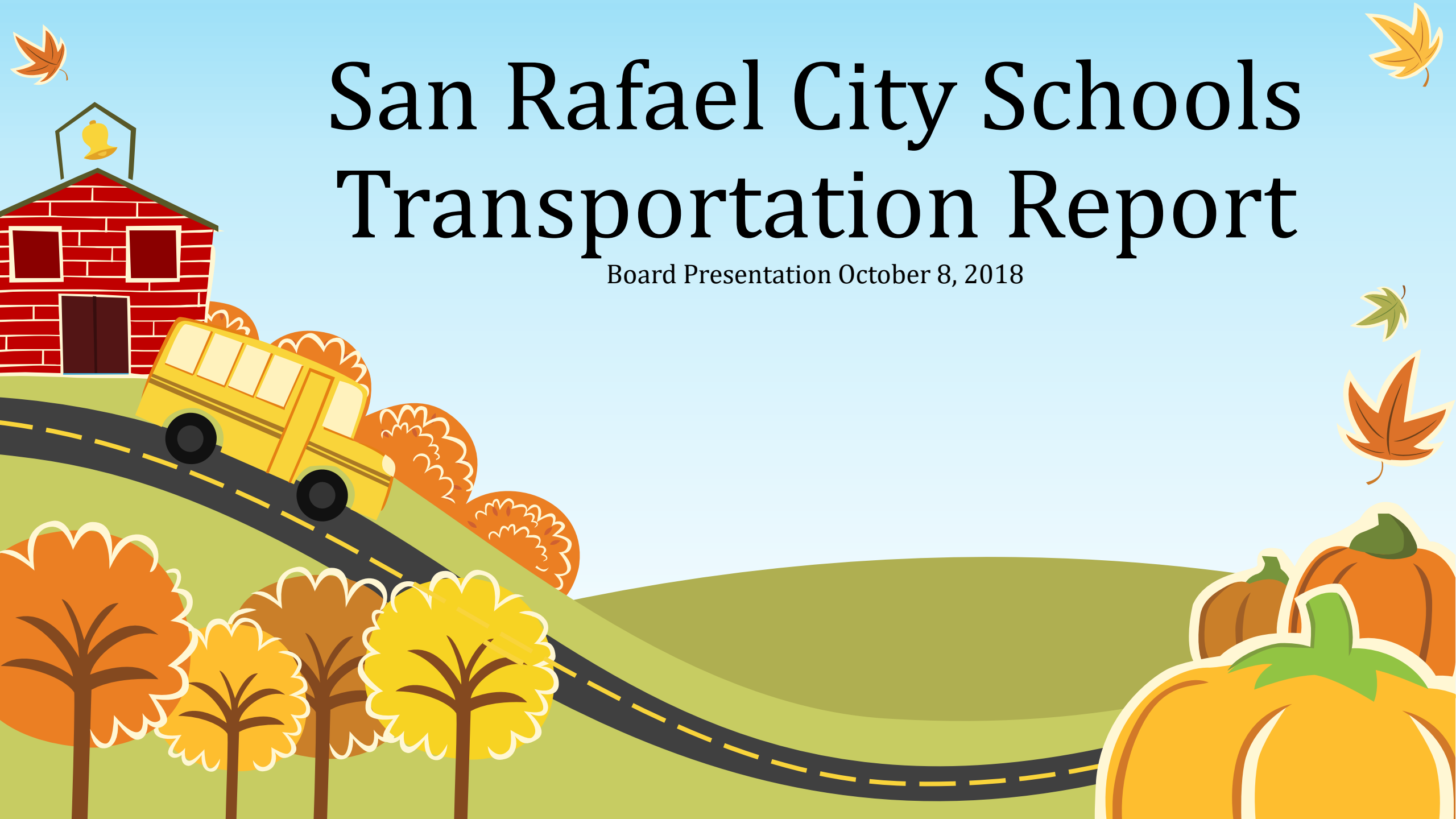


San Rafael City Schools Transportation Report

Board Presentation October 8, 2018



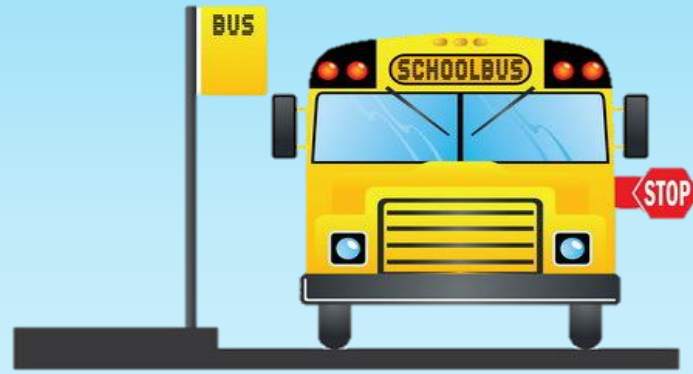
Student Participation 2018-2019

School Site	Riders	% of Riders to Enrollment	
• San Pedro	497	95%	
• Short	72	42%	
• DMS	453	38%	
• Laurel Dell	45	24%	
• Sun Valley	113	22%	63 PM Parkside riders
• Venetia Valley	154	23%	K-8 School
• Coleman	41	11%	
• Glenwood	36	9%	
• Bahia Vista	-0-	Exclusively Walking/Parent Transporting	



Marin Transit Youth Pass Student Participation 2018-2019

School Site	Riders
• DMS	177
• Venetia Valley	30
• SRHS	676
• TLHS	173
Total Riders	1,056



Transportation services are contracted with First Student, Richmond Station

- 12 buses, with additional 3 buses on Wednesdays & Minimum Days
- 12 buses perform 30 AM routes, and 25 PM routes
- District also provides 7 routes for the LEAP program at these sites San Pedro, DMS, Venetia Valley, Coleman, Laurel Dell, & Short (Bahia Vista is also an LEAP site, but does not require transportation services)
- 1 route for the ELM program
- Marin Pupil Transportation Agency provides special education transportation through First Student for 63 ESD and 52 HSD Students.

Routing Efficiency

12 Bus Configuration schedule is based upon:

- Staggered bell schedules at sites
- Shortened routes maximize route frequency
- Allows 3 to 4 layers of route frequency

Areas of Concern:

- Multiple route layers can be impacted by buses falling behind schedule, potentially affecting subsequent routes.
- For several years, adequate back up has been an issue, mainly due to an aging fleet & shortage of staff.
- Recruitment and retention of qualified staff is also a concern, as school bus drivers tend to migrate to transit agencies, private carriers, and companies that provide transportation services in a positive economy.

AM

6:55-7:10	DMS #1	DMS #2	DMS #3	DMS #4	DMS #5			DMS #8		DMS #10	DMS #11	DMS #12
7:05-7:40						V V #6	V V #7		V V #9			
7:15-7:45	SP #1	SP #2	SP #3	SP #4	SP #5			SP #8		SP #10	SP #11	
7:55-8:25						SV # 6	SV #7					SV #12
8:00-8:28	CO #1	SH/LD #2	SH/LD #3	CO #4	GL #5			SH/LD #8	SH/LD #9			

PM

2:20-3:15	DMS #1	DMS #2	DMS #3	V V #4	DMS #5	DMS #6	V V #7	V V #8	DMS #9	DMS #10	DMS #11	DMS #12
2:55-3:55	GL #1	SP #2	SP #3	SH #4	SV #5	SP #6	CO #7	LD #8	SP #9	SP #10	SP #11	SP #12
3:20-4:12		SV #2										

LEAP After School Program

4:50-5:30	CO #1	SH #2	DMS #3	V V #4		LD #6			SP #9		SP #11	
-----------	-------	-------	--------	--------	--	-------	--	--	-------	--	--------	--


ELM

6:05-6:30							ELM #7					
-----------	--	--	--	--	--	--	--------	--	--	--	--	--



Transportation Costs



- 2017-18 cost for ESD Home to School (HTS) Transportation = \$1,027,255
 - 2018-18 Est. cost for ESD Home to School Transportation = \$ 1,072,578
 - District bus pass sales total: 2017-18 = \$255,647 and 2018-19 = \$230,000
 - A full price bus pass is \$415, with an annual fee of \$60, for a total of \$475. The District offers reduced pricing on a sliding scale based on Free/Reduced lunch qualifications standards. San Pedro families no longer required to pay the \$60 processing fee.
- 

2017-18 SRCS Transportation Cost

HTS ESD (net of bus pass sales)	\$ 771,608
Special Education ESD	\$ 704,787
Special Education HSD	\$ 657,133

Total Transportation Expenses: \$2,133,528

2018-19 Estimated SRCS Transportation Cost



HTS ESD (net of bus pass sales w/o SP fees)	\$842,578
Est. Special Education ESD	\$781,638
Est. Special Education HSD	\$730,428

Est. Total Transportation Expenses: \$ 2,354,644



