

# Devil's Gate Reservoir Restoration Project



Presented by: Veronica Mardis and Brittany Barker





# Flood Risk along the Arroyo Seco

- Following the Station Fire, 1.3 MCY of sediment entered Devil's Gate Reservoir.
- Reservoir does not have adequate capacity for a major storm event.
- Until sediment is removed, there is significantly increased flood risk to communities along the Arroyo Seco.







## A Sustainable Devil's Gate

- Permanent Maintenance Area would use less than 20 percent of reservoir
  - 49 of 258 total acres
- 70 acres of native habitat creation and restoration
- Additional seven acres of habitat planting along side slopes
- Configuration enables native habit to co-exist with O&M in a sustainable way
- Establishes a seasonal reservoir pool

### Legend

- Permanent Maintenance Area (49 Acres)
- Annual Maintenance Area (42 Acres)
- Planting on Side Slopes (7 Acres)
- Restoration Areas (70+ Acres)
- LACFCD Easement Boundary (258 Acres)







# Construction




### Establish a permanent maintenance area for annual sediment removal

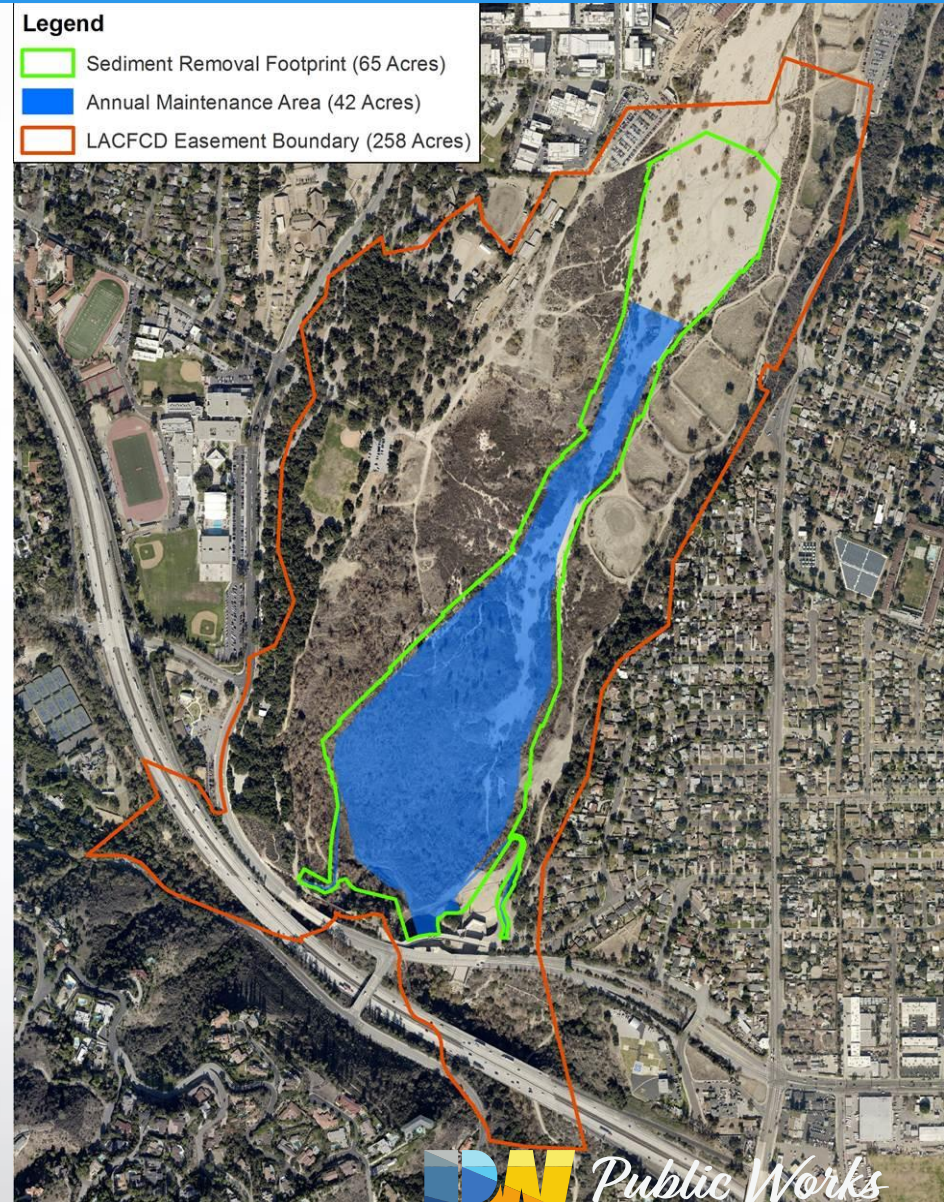
- Reduces need for major sediment removal project in the future

### Restores flood protection capacity and reduces flood risk

- 1.7 MCY sediment removal (plus additional inflow during project)
- 800,000 CY annual maximum
- Reservoir will have 3 MCY of capacity for flood protection

#### Legend

-  Sediment Removal Footprint (65 Acres)
-  Annual Maintenance Area (42 Acres)
-  LACFCD Easement Boundary (258 Acres)







# Construction

### Measures to reduce impacts:

- New access points: No sediment hauling on residential streets
- Hauling:
  - ✓ April thru October (November if weather allows)
  - ✓ Monday-Friday, from 7 a.m. to 3:30 p.m.
  - ✓ Low-emission trucks
  - ✓ No weekends, holidays or major Rose Bowl events
  - ✓ No staging on city streets
  - ✓ Covered beds and enforcement of BMPs
  - ✓ Construction inspectors on site
  - ✓ Trucks balanced between cities of Pasadena and La Cañada Flintridge





## Taking a Community-First Approach



**Varying haul routes and timing to avoid traffic impacts, and balance truck traffic between the communities.**











## Taking a Community-First Approach



**Varying haul routes and timing to avoid traffic impacts, and balance truck traffic between the communities.**



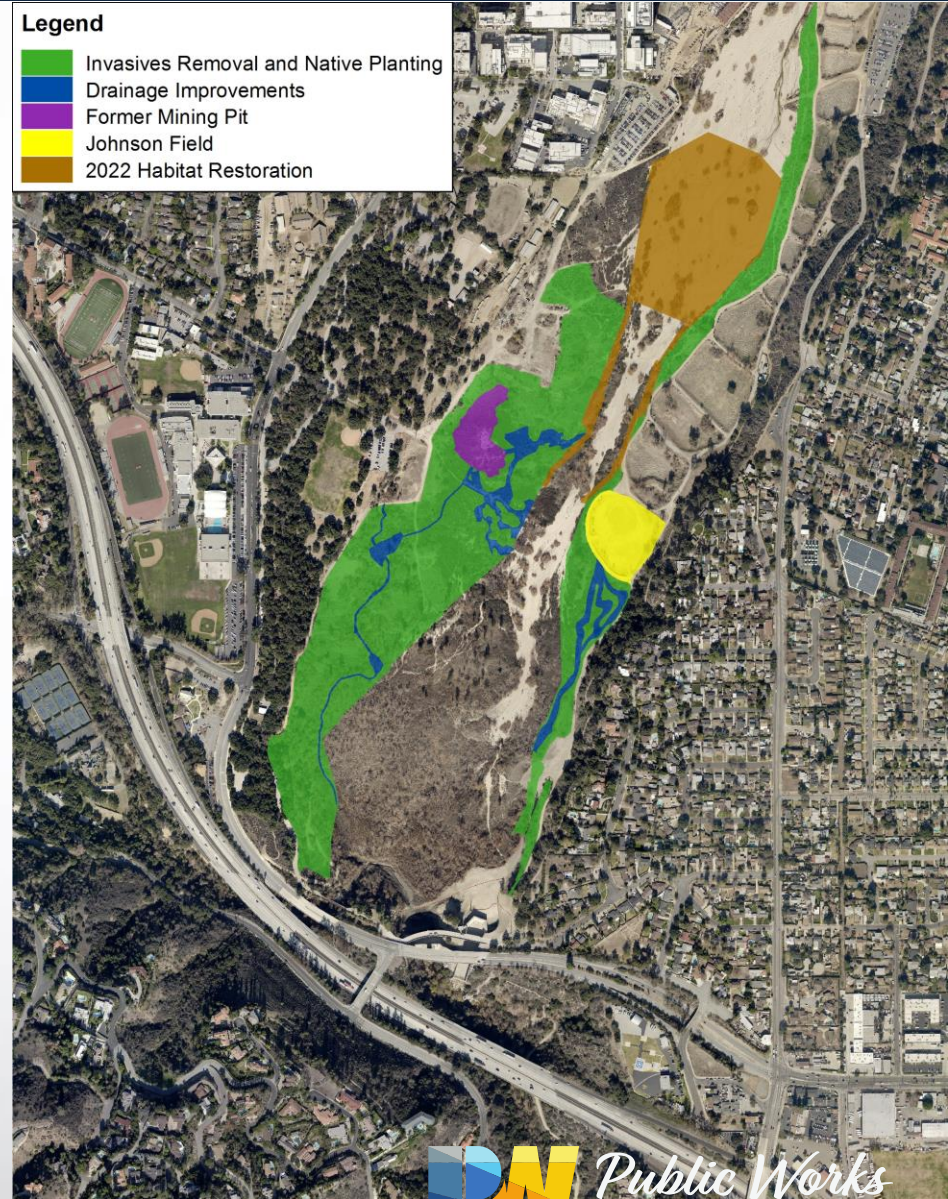


## Phase 1: Restoration

- October 2018 - March 2029
- Restoration of 70 acres of non-native and invasive vegetation with drought-tolerant, native habitat
- Replanting activities will be done with hand tools
- Minor grading and recontouring
- Irrigation system installation
- Installation of container plants and pole cuttings and seeding
- Ongoing weed removal and irrigation

### Legend

- Invasives Removal and Native Planting
- Drainage Improvements
- Former Mining Pit
- Johnson Field
- 2022 Habitat Restoration







# Phase 2: Access Road Construction & Vegetation Removal

- November 2018 - March 2019
- Removal of 51 acres of vegetation
- Workspace clearly defined with fencing and/or staking
- Biologists conduct pre-construction surveys, monitor project activities, report noncompliance issues and recommend measures to avoid impacts to wildlife

### Legend

-  2018 Vegetation Removal (51 Acres)
-  Access Roads





# Phase 2: Access Road Construction & Vegetation Removal

- Temporary trail closures during work week. Open weekends.
- Signs posted 30 days prior to closure
- No project-related road work in Pasadena from Dec. 17 - Jan. 7
  - Includes slip lane for east access road and turn lane in center median for both access roads





### Phase 3: Sediment Removal

- April - December (2019–2022)
- Monday - Friday, 7 am to 5 pm with hauling ending at 3:30 pm
- No work on weekends, holidays, or during major Rose Bowl events
- Trails temporarily closed weekdays 7 am - 5 pm. Open weekends
- Prior to final year of project, remaining 14 acres of vegetation removed at north end of reservoir

#### Legend

- 2019 - 2021 Sediment Removal (51 Acres)
- 2022 Sediment Removal (14 Acres)
- Access Roads
- Sediment Removal Trail Closures







Talk to Us

# Questions?

## For More Information:

Subscribe to our e-mail list to receive updates on the project.



[www.DevilsGateProject.com](http://www.DevilsGateProject.com)



[devilsgateproject@dpw.lacounty.gov](mailto:devilsgateproject@dpw.lacounty.gov)



Hotline: (626) 458-2507

