



# Los Gatos Union School District

## **Student Population Forecast** By Residence

### **School Year 2018/2019 Report** Forecast 2019/20 – 2028/29

Prepared by:



December 7, 2018

## TABLE OF CONTENTS

### Introduction

### Executive Summary

<b>Section One:</b>	<b>Methodology</b>	
	Sources of Data	1
	Ten Year Forecast Methodology	3
	Applying Variables to Generate Forecasts	10
<b>Section Two:</b>	<b>Student Population Forecast</b>	
	Ten Year Forecast Summary	11
	ES Attendance Area Forecasts by Residence	14
	MS Attendance Area Forecast by Residence	15
<b>Section Three:</b>	<b>Attendance Matrix</b>	
	Attendance Matrix	16
	<i>K-8 Attendance Matrix</i>	17
<b>Section Four:</b>	<b>Student Capture Analysis</b>	
	Student Capture Analysis	18
<b>Section Five:</b>	<b>Staffing Forecasts by School</b>	
	Staffing Forecasts by School	19
<b>Appendix A:</b>	<b>Student Population Forecast – No Development</b>	
	Ten Year Forecast Summary – No Development	22
<b>Appendix B:</b>	<b>Study Area Forecast</b>	
	Study Area Map	23
	Study Area Forecast by Residence	24
<b>Appendix C:</b>	<b>Third-Party Demographic Information*</b>	
	Third Party Demographic Information*	83

\*The Third Party Demographic Information was collected using ESRI's Business Analyst Online and is meant to be used for informational purposes only. This data was not used to calculate the student population forecast in the following pages. Davis Demographics is not responsible for the accuracy of this data.

## ***INTRODUCTION***

The Los Gatos Union School District has contracted with Davis Demographics & Planning, Inc. (Davis Demographics) to update and analyze demographic data relevant to the District's facility planning efforts. The scope of contracted work includes: mapping the District, address matching the current student file, developing and researching pertinent demographic data, identifying future residential development plans and developing a Ten year student population Forecast. Davis Demographics will then assist the District in developing solutions for housing future student population. Additionally, this study was prepared to assist the District's efforts in evaluating future site requirements and attendance area changes.

The purpose of this report is to identify and inform the District of the trends occurring in the community; how these trends may affect future student population; and to assist in illustrating facility adjustments that may be necessary to accommodate the potential student population shifts. The District can then use this information to better plan for the need, location and timing of facility or boundary adjustments.

The **Sources of Data** section details where the two sources of data, geographic and non-geographic, are collected and how each data item is used in the Ten-year student population Forecast model.

The **Ten Year Forecast Methodology** section discusses in detail how the factors used in the study were calculated and why they were used. These factors include: the calculation of incoming kindergarten classes, additional students from new housing (referred to as student yield), the effects of student mobility, and a detailed review of planned residential development within the District.

The **District Student Resident Forecast Summary** sections review the Fall 2018/19 student resident Forecast results. Included in these sections are a district wide student population Forecast summary and a projected resident student population summary for each existing attendance area and study area.

While reading this report, it is important to remember that this is a snapshot of current and potential student population based upon data gathered in Fall 2018/19. Population demographics change, development plans change, funding opportunities can change, District priorities can change, and therefore, new Forecasts and adjustments to the overall Master Plan will continue to be necessary in the future.

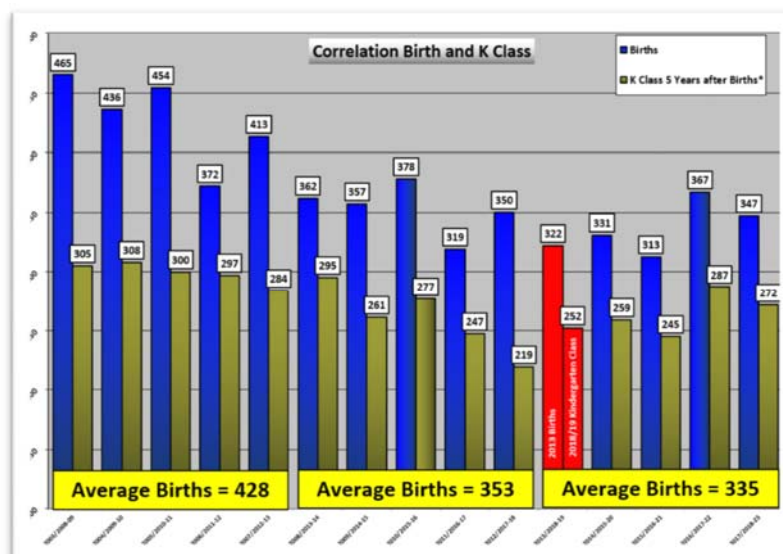
## EXECUTIVE SUMMARY

Davis Demographics & Planning, Inc. (Davis Demographics) is assisting the Los Gatos Union School District (District) to plan for future student population changes. By factoring current and historical student data with demographic data and planned residential development, Davis Demographics calculated a Ten-year student population Forecast. This Forecast is based upon residence of the students and is designed to alert the District as to when and where student population shifts will occur. Forecast factors, trends and development data is based upon the best information at the time of the analysis. This information can change quickly, and Davis Demographics advises an annual review of Forecasts.

The District has grown annually from 2,587 students in the 2006/07 school year to a peak of 3,382 students in the 2015/16 school year. However, there has been an annual decline in enrollment for the 2016/17 – 2018/19 school years; with enrollment currently at 3,022 students in fall of 2018/19. The bubble of students from growth a decade ago is graduating out of the district's schools and the district can expect a small period of decline followed by stable enrollment.

During the growth period there was only a minimal amount of new housing units built within the District boundaries, suggesting growth was caused by other factors rather than new development. The most likely causes were from a positive net migration of families with school age children moving into the District along with relatively high area births.

The in-migration trends continue to be positive in the District as a whole, however, births in the area have declined significantly. Birth data for the zip codes 95030, 95032 and 95033, collected from the California Department of Health, has declined from 2002 to 2017. When looking at the data in five year increments, the assumed time a child will go from birth to kindergarten, the average annual births are down by almost 100 children (see Page 4 for a larger version of the chart below). However, births in 2014, 2016 and 2017 are larger than the births in 2013 (2018/19's Kindergarten Class), this suggest the possibility of a slight increase in future kindergarten students compared to 2018/19's K class.





With a decline in area births, a decline in kindergarten class size followed. As higher upper grade classes graduate out, they are being replaced by relatively smaller kindergarten classes. For example, in 2017/18 there were 433 8<sup>th</sup> grade student residing within the district. As they move to 9<sup>th</sup> grade this year they are replaced by 249 kindergarten students. A net loss of 184 students. While some of the difference will be made up through in-migration, the gap is too large to completely close. As shown in the chart below (a larger version is on page 13) in 2015/16 grades 4 to 8 were all over 390 students. By 2018/19 only grades 6 to 8 are over 390 and no classes will be over 390 by the 2021/22 school year.

Student Residing within the District Only									
				Base File	Projected Resident Students				
	2015/16	2016/17	2017/18	2018/19	2019/20	2020/21	2021/22	2022/23	2023/24
K	306	235	213	249	263	249	300	267	270
1	273	292	252	225	255	270	255	306	273
2	329	282	302	263	234	265	280	265	319
3	374	335	306	305	274	245	276	292	276
4	391	379	354	326	319	287	257	290	306
5	396	390	386	355	328	322	290	258	292
6	435	417	404	411	374	347	340	306	273
7	417	437	421	405	414	377	350	342	308
8	409	429	433	437	413	422	385	357	349
K-5	2,069	1,913	1,813	1,723	1,672.6	1,636.6	1,658.1	1,678.6	1,737.4
6-8	1,261	1,283	1,258	1,253	1,200.8	1,145.8	1,075.4	1,004.5	929.9
K-8	3,330	3,196	3,071	2,976	2,873.4	2,782.4	2,733.5	2,683.1	2,667.3

The combination of lower births/kindergarten classes, natural matriculation of students through the system and lack of new residential housing units is predicted to result in a decline in K-5 enrollment until 2021/22 then a rebound to enrollment near current levels. Unfortunately, grades 6<sup>th</sup>-8<sup>th</sup> is forecast to decline until about the 2026/27 school year.

## ***SOURCES OF DATA***

### **Geographic Map Data**

Ten geographic data layers were updated for use in the Ten-year student population Forecasts:

1. Street Centerline Database
2. Study Areas
3. Schools
4. Students – Historical and Current
5. Future Residential Development

#### **1) Street Centerline Data**

Davis Demographics has licensed a digital street centerline map of the School District from Santa Clara County. The street database has associated attributes that contain, but are not limited to, the following fields: full street name, address range and street classification

The main function of the streets is in the geo-coding process of the student data. Each student is address matched to the streets by their given address. The geo-coding process places a point on the map for every student in the exact location of student residence. This enables Davis Demographics to analyze the student data in a geographic manner.

Another vital utilization of the digital street database is in the construction of study areas. Freeways, major streets and neighborhood streets are used as boundaries for the study areas.

#### **2) Study Areas**

Study areas are small geographic areas and the building blocks of a school district; they are similar to neighborhoods. Study areas are geographically defined following logical boundaries of the neighborhood, such as freeways, streets, railroad tracks, rivers, etc. Each study area is then coded with the elementary, junior high and high school that the area is assigned to attend. By gathering information at the study area level, a school district can closely monitor growth and demographic trends in particular regions and spot potential need for boundary changes or new facilities.

#### **3) Schools**

The District provided school facility location information to Davis Demographics for the purpose of mapping the District facilities.

#### **4) Student Data**

**a. Historical Student Data** - Historical enrollment is used to compare past student population growth and trends as well as the effects of mobility (move-in, move-out from existing housing) throughout the District. Davis Demographics utilized the 3 previous years' (2015/16, 2016/17 and 2017/18) address matched students as historical data.

**b. Current Student Data** - A student data file geocoded approximately October 3rd, 2018 summarized by grade level and by study area is used as a base for enrollment Forecasts. Existing students were categorized by study area through the address matching process that locates each student within a particular area based upon their given address. The Forecasts run each of the next Ten years from fall 2018/19 through fall 2028/29.

The Student Accounting Summary (Table 1) indicates the total student enrollment as of October 3rd, 2018 and the number of students used in the Ten year student population Forecasts. The Forecast model is based upon student residence and excludes students residing outside of the District's boundaries, students unable to be address matched and Independent Study students.

<b>Student Accounting Summary</b>	
<b>Fall 2018/19 Actual Enrollment (10/03/2018)</b>	
<b>Total Students Enrolled in District</b>	<b>3,022</b>
<b>Students Residing Outside of District/Unmatched</b>	<b>46</b>
<b>Students Used in Forecast</b>	<b>2,976</b>

*Table 1 – Student Accounting Summary*

### **5) Future Residential Development**

Planned residential development data is collected to determine the number of new residential units that will be built over the Ten-year timeframe of the student population Forecasts. The projected units within the next Ten years will have the appropriate Student Yield Factor, Table 6, applied to them to determine the number of new students planned residential development will yield.

### **Non-Geographic Data**

Two basic sets of non-geographic data were compiled and reviewed for use in the Ten-year student population Forecasts by residence:

1. Births by Zip Code
2. Mobility Factors

**1) Births by Zip Code Data** - Birth data by postal zip code was obtained from the California State Department of Health for the years 1998-2017 and roughly correlated to the Los Gatos Union School District. Past changes in historical birthrates are used to estimate incoming kindergarten student population from existing housing.

**2) Mobility Factors** - Mobility refers to the increase/decrease in the migration of students within the District boundaries (move-in/move-out of students from existing housing). Mobility, similar to a cohort, is applied as a percentage of increase/decrease among each grade for every year of the Forecasts

## ***TEN YEAR FORECAST METHODOLOGY***

The Forecast methodology used in this study combines historical student population figures, past and present demographic characteristics, and planned residential development to forecast future student population at the study area level. District-wide Forecasts are summarized from the individual study area Forecasts. **These Forecasts are based on where the students reside and their school of residence. Davis Demographics utilizes, the actual location of where the students reside, as opposed to their school of enrollment, in order to provide the most accurate estimate of where future school facilities should be located.** The best way to plan for future student population shifts is to know where the next group of students will reside. The following details the methodology used in preparing the student population Forecasts by residence.

### ***Ten-Year Forecasts***

Forecasts are calculated out Ten years from the date of Forecast for several reasons. The planning horizon for any type of facility is typically no less than Ten years, often longer. Ten years are sufficient to adequately plan for a student population shift and facility restructuring. It is a short to midterm solution for planning needs. Forecasts beyond Ten years are based on speculation due to the lack of reliable information on birthrates, new home construction, economic conditions etc.

### ***Why Forecasts are Calculated by Residence***

Typically, school district Forecasts are based on enrollment by school. However, this method is inadequate when used to locate future school facility requirements, because the location of the students is not taken into consideration. A school's enrollment can fluctuate due to variables in the curriculum, program changes, school administration and open enrollment policies. These variables can skew the apparent need for new or additional facilities in an area.

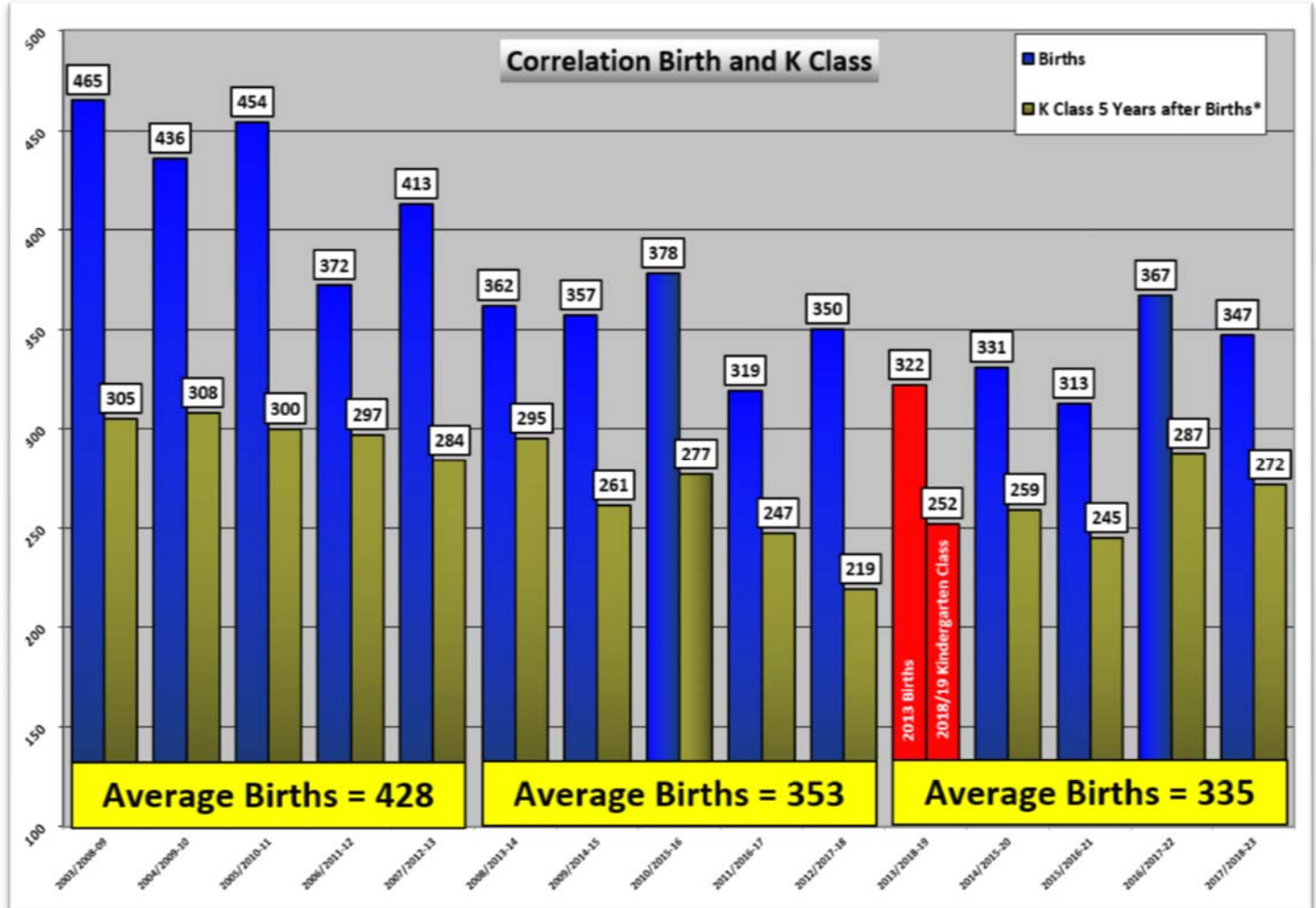
The method used by Davis Demographics is unique because it modifies a standard cohort Forecast with demographic factors and actual student location. **Davis Demographics bases its Forecasts on the belief that school facility planning is more accurate when facilities are located where the greatest number of students reside.**

The best way to plan for future schools is to know where the next group of students will be coming from. The following details the methodology used in preparing the student population Forecasts.

***1) Progression*** - Each year of the Forecasts, 8th grade students graduate, and continuing students' progress through to the next grade level and kindergarten students start school. This normal progression of students is modified by the following factors:

**2) Incoming Kindergarten** – Live birth data, reported to the California State Department of Health, by the resident postal zip code of the mother is used to project the base incoming kindergarten class. Additional kindergarten students may be added from future development. Davis Demographics uses birth data by zip code so, if need be a different birth factor can be applied to various areas of the District.

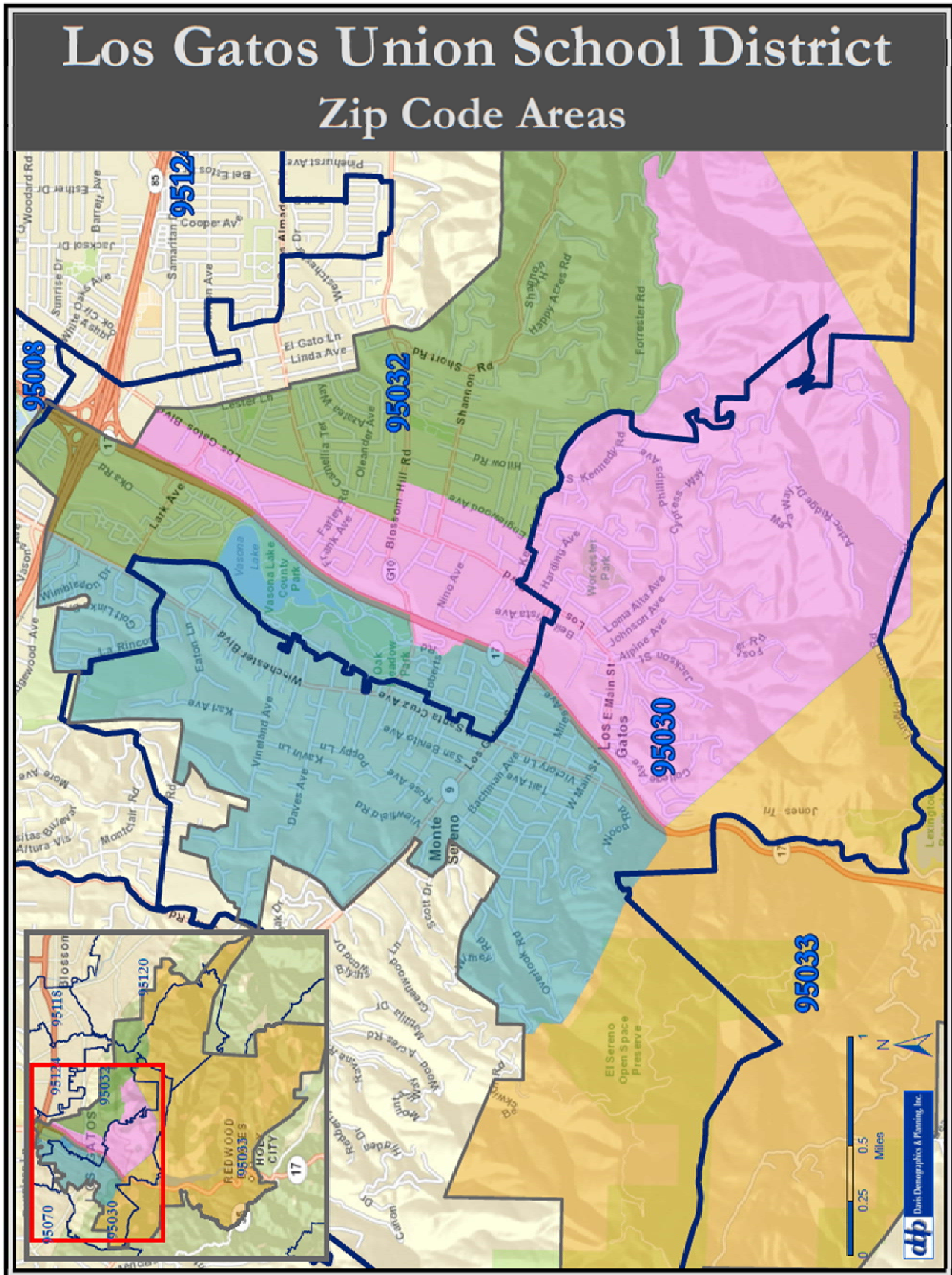
Incoming kindergarten classes, for existing homes, are estimated by comparing changes in past births and kindergarten class enrollment. Table 2 shows the total births for each zip code in the Los Gatos Union School District from 1998 to 2017. Future kindergarten classes (2019/20-2028/29) are estimated by multiplying the existing kindergarten class (2018/19) by the ratio of the projected year's births to the 2013 births. If the fall 2018/19 kindergarten class was born in 2013, Davis Demographics compared the total births in 2013 to the total births in 2014 to determine a factor for next year's kindergarten class (fall 2019/20). Similarly, 2013 was compared to 2015 (fall 2020/21 K class), 2013 to 2016 (fall 2021/22 K class) and 2013 to 2017 (Fall 2023/24 K class).



\*Kindergarten classes includes inter-district transfers

**Chart 1– Birth Data**





**3) Student Mobility Factors** - Student mobility factors further refine the Ten-year student population Forecasts. Mobility refers to the increase/decrease in the migration of students within the District boundary (move-in/move-out of students from existing housing). Mobility, similar to a cohort, is applied as a percentage to each grade for every year of the Forecasts.

A net increase or decrease of zero students over time is represented by a factor of 100%. A net student loss is represented by a factor less than 100% (1.00) and a net gain by a factor greater than 100% (1.00) (see example).

Example:

$$\begin{array}{rcl} & 100 & \text{K grade students in fall 2018/19} \\ \times & 1.07\% & \text{(1st Grade mobility Blossom Hill E.S.)} \\ \hline = & 107.0 & \text{1st Grade students in fall 2019/20} \end{array}$$

Having historical student data categorized by study area is extremely helpful in calculating accurate Student Mobility Factors. Davis Demographics was able to utilize the last four years' (fall 2015/16, 2016/17, 2017/18 and 2018/19) student data. The 2015/16 student data was compared to 2016/17, 2016/17 to 2017/18, and 2017/18 to this year's student data at the Study area level. Grades K-8 Mobility was calculated to correspond with elementary attendance areas.

Los Gatos SD Mobility Factors (Fall 2015/16-2018/19)								
Reported by Elementary School Attendance Area								
Elementary School	K to 1	1 to 2	2 to 3	3 to 4	4 to 5	5 to 6	6 to 7	7 to 8
Blossom Hill ES	107%	100%	103%	105%	102%	106%	100%	103%
Daves Avenue ES	98%	109%	104%	103%	98%	103%	99%	100%
Lexington ES	103%	98%	102%	106%	105%	104%	106%	93%
Van Meter ES	100%	105%	106%	105%	100%	107%	101%	105%

Attendance Area Blossom Hill ES					Projection Date 10/3/2018		
	ACTUAL		PROJECTED RESIDENT STUDENTS				
	2018	2019	2020	2021	2022	2023	2024
K	89	91.1	84.4	98.1	91.5	91.3	91.3
1	79	95.2	97.8	90.7	105.0	97.9	97.7
2	98	79.0	95.2	98.2	90.7	105.0	97.9
3	111	100.9	81.8	98.9	101.2	93.5	108.1
4	106	116.6	106.4	86.3	103.8	106.2	98.1
5	128	108.1	119.3	108.9	88.0	105.9	108.4
		107%	100%	103%	105%	102%	106%

Blossom Hill ES	K --> G1	G1 --> G2	G2 --> G3	G3 --> G4	G4 --> G5	G5 --> G6
	107%	100%	103%	105%	102%	106%

*Table 3- Mobility Factors*



**4) Planned Residential Development**—Planned residential development data is collected to determine the number of new residential units that will be built over the Ten-year time frame of the student population Forecasts. The projected units within the next Ten years will have the appropriate Student Yield Factor, Table 5, applied to them to determine the number of new students planned residential development will yield.

This data was obtained through discussions with the planning department of the City of Los Gatos and Santa Clara County. A database map of the planned residential development was created, including, when available, project name, location, housing type, total number of units and estimated move-in dates (phasing schedule). Projected phasing is based upon occupancy of the unit and is used to help time the arrival of students from these new developments.

In the student population Forecast by residence Davis Demographics includes all approved and tentative tract maps in addition to any planned or proposed development that possibly will occur within the Forecast timeframe. The planned residential development information and phasing estimates is a snapshot of the District at the time of this study. All of the Information may change and should be updated annually (see Table 4).

Residential Development in L.G.U.S.D.					
Study Area	Project	Developer	Type	Total Units	Status
70A	Bellaterra@North 40	Summerhill Homes	253	MFA	Active
70A	North Forty-Phase2/3*	North Forty	67	MFA	Planning
133	Surrey Farm Estates	Surrey Farm Estates LLC	10	SFD	Planning
56	Oka Rd/Lark Ave		0	SFD	Early Planning/Hold
56	Oka Rd/Lark Ave		0	MFA	Early Planning/Hold
56	Oka Rd/Lark Ave		0	SFD	Early Planning/Hold
90	Higgins		64	SFD	Early Planning/Hold
53	Elks Lodge		4	SFD	Early Planning/Hold

\* North Forty - Phase 2 and 3 is not included in forecast because the developer has yet to submit a final plan

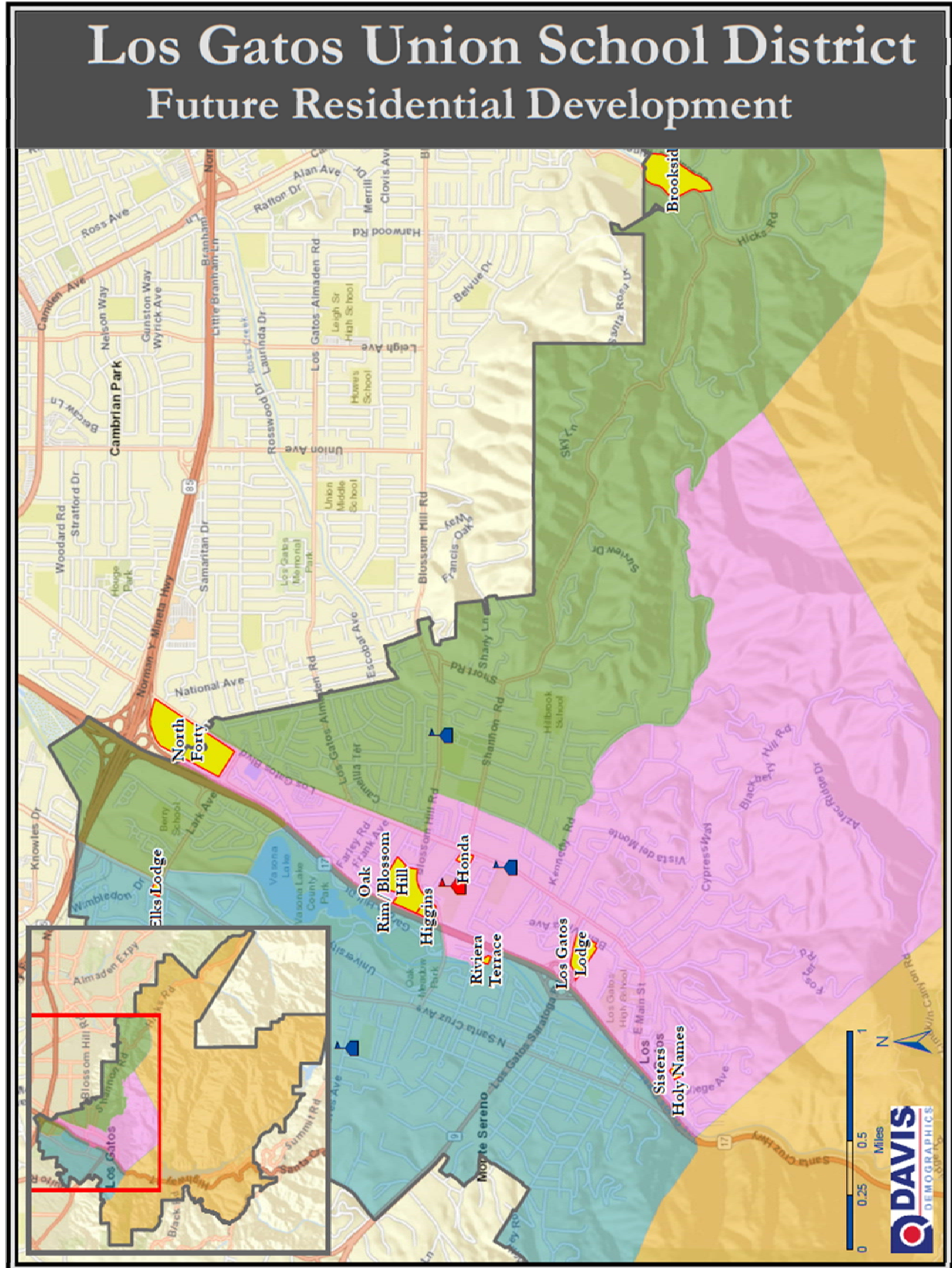
**Table 4– Planned Residential Development**

Note: The development list includes projects that occupancy will begin in the Ten year time period of the enrollment Forecasts. Some future projects may not be included if they do not fall in this time frame. Total Units reflect the number of approved units for the project not the remaining units to be built. Some projects, such as Oka Rd/Lark Ave, may not happen at all.

Residential unit's occupancy summary by Study Area

10 - Year Development Summary																				
Total SFD = 20    Total MFA = 253																				
Study Area	10/2018 - 10/2019		10/2019 - 10/2020		10/2020 - 10/2021		10/2021 - 10/2022		10/2022 - 10/2023		10/2023 - 10/2024		10/2024 - 10/2025		10/2025 - 10/2026		10/2026 - 10/2027		10/2027 - 10/2028	
	SFD	MFA	SFD	MFA	SFD	MFA	SFD	MFA	SFD	MFA	SFD	MFA	SFD	MFA	SFD	MFA	SFD	MFA	SFD	MFA
70A	0	10	0	25	0	25	0	25	0	25	0	25	0	25	0	50	0	43	0	0
133	0	0	5	0	5	0	0	0	0	0	0	0	0	0	0	0	0	0	0	0
Total	0	10	5	25	5	25	0	25	0	25	0	25	0	25	0	50	0	43	0	0
	Total 2019 / 20 = 10		Total 2020 / 21 = 30		Total 2021 / 22 = 30		Total 2022 / 23 = 25		Total 2023 / 24 = 25		Total 2024 / 25 = 25		Total 2025 / 26 = 25		Total 2026 / 27 = 50		Total 2027 / 28 = 43		Total 2028 / 29 = 0	

**Table 5– Residential Development Summary**



***5) Student Yield Factors – 10 Year Forecasts*** - Closely related to the planned residential development units are Student Yield Factors. The Student Yield Factors, when applied to planned residential development units, determine how many additional students will be generated from new construction within the District.

Davis Demographics calculated Student Yield Factors based upon recently completed development.

K-6 & 7-8 Student Yield Factors								
Project	Unit Type	# of Units	Students Grade K-6	Students Grade 7-8	Students Grade K-8	SYF Grades K-6	SYF Grades 7-8	SYF Grades K-8
Brookside	Single Family	94	51	19	70	0.543	0.202	0.745
Oak Rim/Blossom Hill	Multi Family	338	61	15	76	0.180	0.044	0.225

***Table 6 – Student Yield Factors***

### **APPLYING THE VARIABLES TO GENERATE THE FORECASTS**

The following paragraphs summarize how Davis Demographics uses the factors to determine the student population Forecasts. Remember that these Forecasts are based on residence.

The Los Gatos Union School District has been divided into 118 study areas and each study area is coded for the elementary, junior high and high school attendance area in which it falls. The residential Forecasts are calculated at the study area level. This means that Davis Demographics conducts 118 individual Forecasts that are based upon the number of students residing in each study area.

The first step in calculating these Forecasts involve listing the number of students that live in each study area by each individual grade (kindergarten through 8th grade). The current student base (Fall 2018/19) is then passed onto the next year's grade (2018/19's K become 2019/20's 1<sup>st</sup> graders, 2018/19's 1<sup>st</sup> graders become 2019/20's 2<sup>nd</sup> graders, and so on). After the natural progression of students through the grades is applied, then Birth Factors are multiplied by the current kindergarten class to generate a base for the following year's kindergarten class.

Next, a Mobility Factor is applied to all grades. Again, these factors take into account the natural in/out migration of students throughout the District.

The last essential layer applied to the Forecasts deals with additional students from planned residential development. This is a simple calculation, again conducted at the study area level, where the estimated number of new housing units for a particular year is multiplied by the appropriate Student Yield Factors. For example, if 100 single family detached (SFD) units are to be built in a specific study area each year, and then you would multiply this number (100) by the SFD K-6 student yield factor (.543) and the resulting number of students is 54.3 which is divided evenly among the seven grades.

To finish generating the Forecasts by residence, the same process is conducted for each of the 118 study areas. Once the Forecasts have been run at the study area level, then it is simple addition to determine Forecasts for each of the District's attendance areas or for a district-wide summary. For example, the student population Forecasts for Blossom Hill Elementary School are simply the summary of all the study areas that make up this specific attendance area.

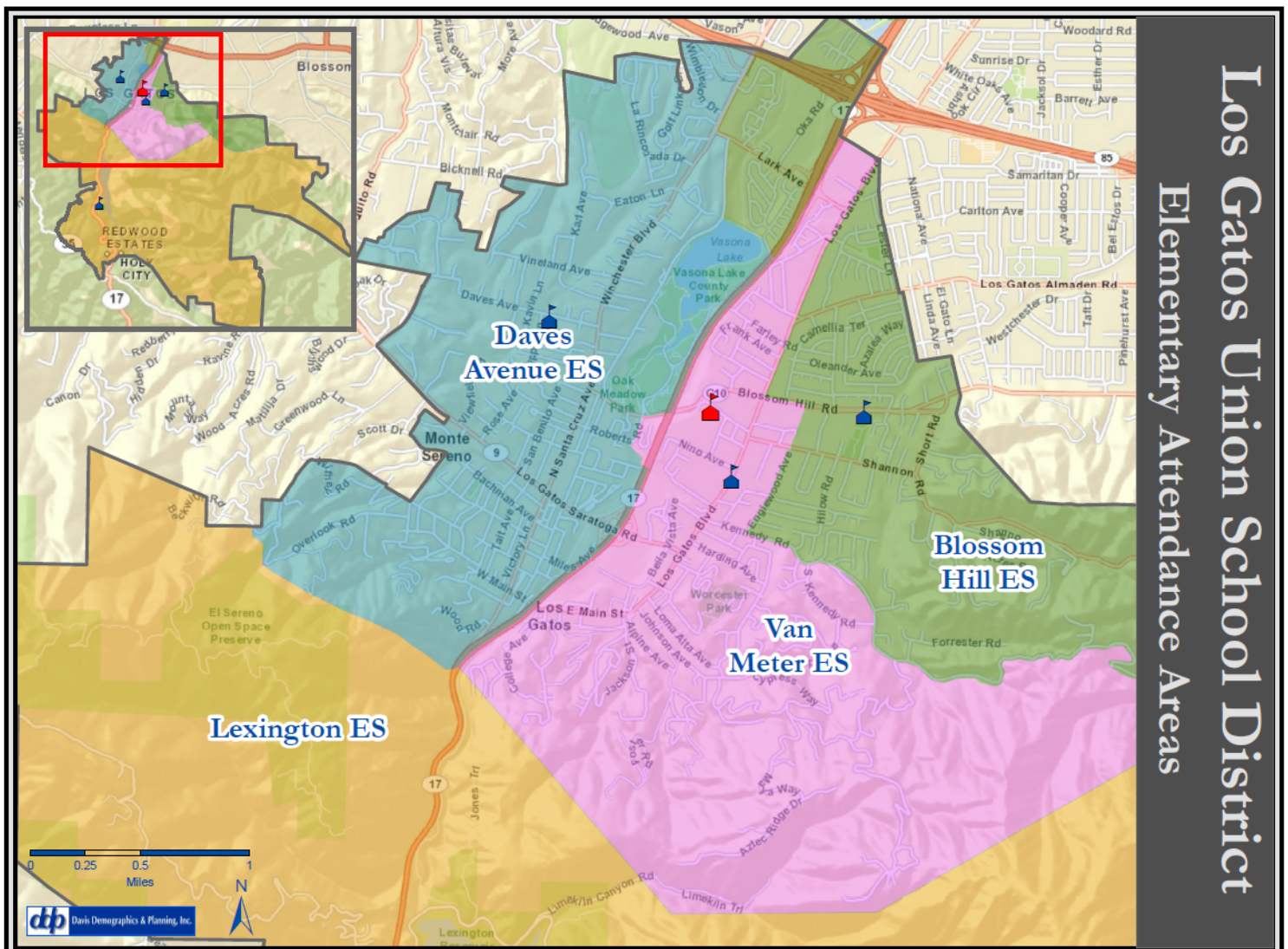
The District Summary for the Forecasts (Section 2) is a total summary of all 118 study areas, which excludes all the students that attend a District school but live completely outside of the District's boundaries, are unmatched due to incorrect address information and independent study students. These out-of-district, unmatched and independent study students are factored back into the Forecasts by simply adding the existing totals in at the bottom of the Forecasts (please see the Attendance Matrices in Section 3 for a breakdown of the out-of-district and unmatched students by school). Davis Demographics adds the current total out-of-district and unmatched students to each year of the Forecasts because there is no way to accurately forecast these students in the future.



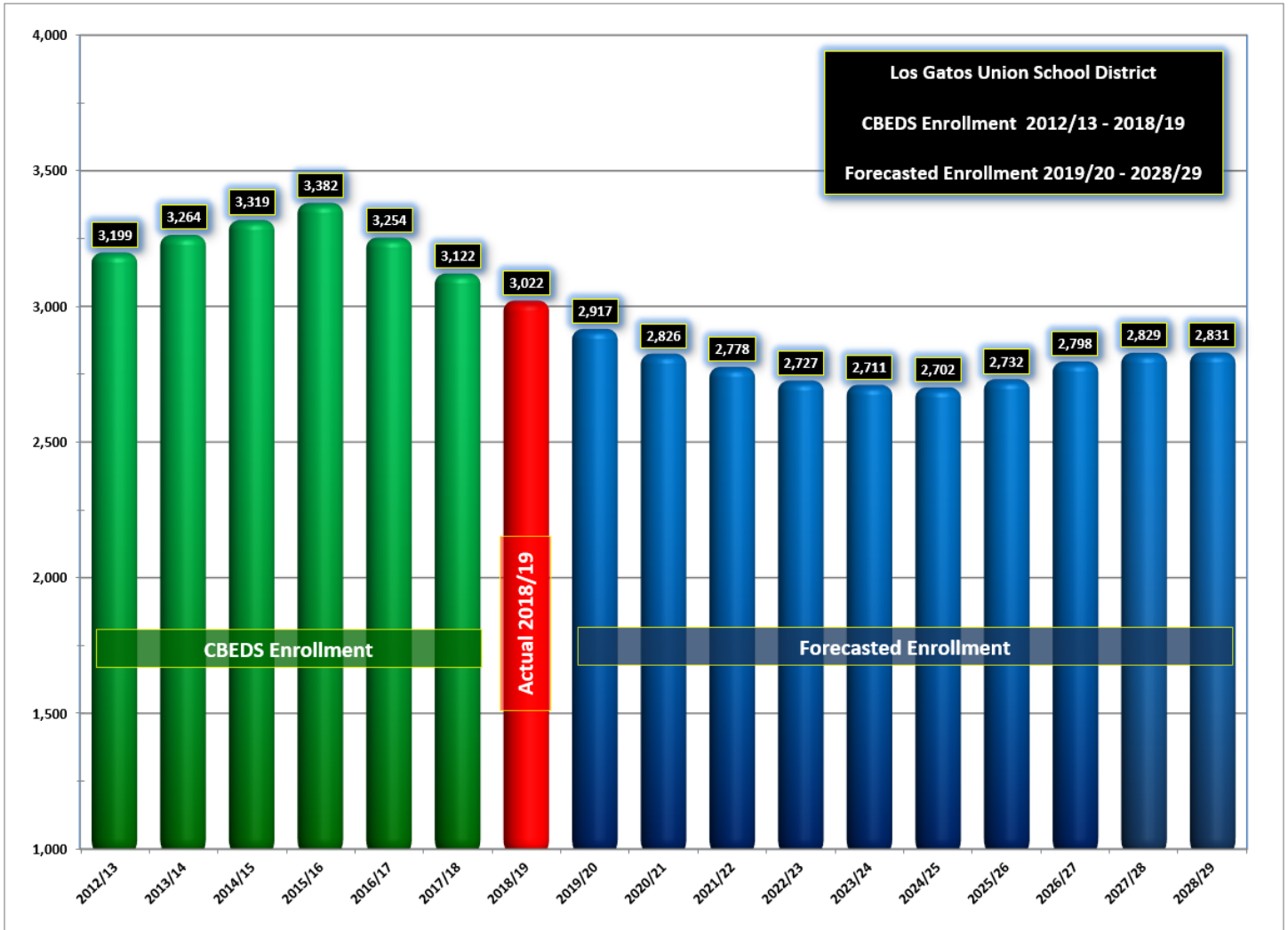
### **TEN YEAR FORECAST SUMMARIES**

Finally, the student population is projected out Ten years for each of the study areas and for the entire Los Gatos Union School District. The District Wide Forecast summaries enable the District to see a broad overview of future student population and what impact this population will have on existing facilities. The study area listings enable the District to monitor student population growth or decline in smaller geographic areas within the District.

At any point in time, study areas and their projected resident students can be shifted between schools to assist in balancing enrollment changes. Together, these Forecast summaries present the means to identify the timing of student arrivals and overall facility requirements, as well as location in order to accommodate the District's expected population shift.



District Wide Forecast																		
Projection Date 10/03/2018																		
Historic							Base File	Forecasted Students										
		2012/13	2013/14	2014/15	2015/16	2016/17	2017/18	2018/19	2019/20	2020/21	2021/22	2022/23	2023/24	2024/25	2025/26	2026/27	2027/28	2028/29
Resident Students by Grade	K	280	298	272	306	235	213	249	262.9	248.8	299.8	266.9	270.4	270.7	271.1	270.5	271.0	270.5
	1	321	300	301	273	292	252	225	254.9	269.5	255.0	306.2	273.4	276.6	277.0	278.0	277.2	276.6
	2	333	351	327	329	282	302	263	234.0	264.8	280.4	265.0	318.7	283.5	287.5	288.5	289.4	287.4
	3	346	343	362	374	335	306	305	273.5	244.6	276.4	292.4	276.4	332.5	295.5	300.5	301.4	301.1
	4	371	364	376	391	379	354	326	319.0	286.9	256.7	289.7	306.3	289.5	348.0	310.3	315.2	315.0
	5	376	377	401	396	390	386	355	328.3	322.0	289.8	258.4	292.2	308.6	291.8	350.8	313.5	316.9
	6	390	394	399	435	417	404	411	374.0	346.7	340.1	305.5	272.8	308.5	325.6	308.6	370.4	330.1
	7	360	409	406	417	437	421	405	413.8	377.2	350.1	342.4	307.8	274.6	310.9	328.5	311.3	372.2
	8	376	374	426	409	429	433	437	413.0	421.9	385.2	356.6	349.3	313.4	280.7	317.8	335.8	317.1
Subtotal Resident Students																		
Subtotal Resident Students	K-5	2,027	2,033	2,039	2,069	1,913	1,813	1,723	1,672.6	1,636.6	1,658.1	1,678.6	1,737.4	1,761.4	1,770.9	1,798.6	1,767.7	1,767.5
	6-8	1,126	1,177	1,231	1,261	1,283	1,258	1,253	1,200.8	1,145.8	1,075.4	1,004.5	929.9	896.5	917.2	954.9	1,017.5	1,019.4
	K-8	3,153	3,210	3,270	3,330	3,196	3,071	2,976	2,873.4	2,782.4	2,733.5	2,683.1	2,667.3	2,657.9	2,688.1	2,753.5	2,785.2	2,786.9
Unmatched Students																		
Unmatched Students	K-5	2	3	6	0	0	2	1	0.0	0.0	0.0	0.0	0.0	0.0	0.0	0.0	0.0	0.0
	6-8	1	1	0	1	0	0	1	0.0	0.0	0.0	0.0	0.0	0.0	0.0	0.0	0.0	0.0
	K-8	3	4	6	1	0	2	2	0.0	0.0	0.0	0.0	0.0	0.0	0.0	0.0	0.0	0.0
Inter-District Transfers Students																		
Inter-District Transfers Students	K-5	29	32	29	37	39	33	31	31.0	31.0	31.0	31.0	31.0	31.0	31.0	31.0	31.0	31.0
	6-8	14	18	14	14	19	16	13	13.0	13.0	13.0	13.0	13.0	13.0	13.0	13.0	13.0	13.0
	K-8	43	50	43	51	58	49	44	44.0	44.0	44.0	44.0	44.0	44.0	44.0	44.0	44.0	44.0
Total Enrollment																		
Total Enrollment	K-5	2,058	2,068	2,074	2,106	1,952	1,848	1,755	1,703.6	1,667.6	1,689.1	1,709.6	1,768.4	1,792.4	1,801.9	1,829.6	1,798.7	1,798.5
	6-8	1,141	1,196	1,245	1,276	1,302	1,274	1,267	1,213.8	1,158.8	1,088.4	1,017.5	942.9	909.5	930.2	967.9	1,030.5	1,032.4
	K-8	3,199	3,264	3,319	3,382	3,254	3,122	3,022	2,917.4	2,826.4	2,777.5	2,727.1	2,711.3	2,701.9	2,732.1	2,797.5	2,829.2	2,830.9
Change																		
Change %	K-8		65	55	63	-128	-132	-100	-104.6	-91.0	-48.9	-50.4	-15.8	-9.4	30.2	65.4	31.7	1.7
	%		2.0%	1.7%	1.9%	-3.8%	-4.1%	-3.2%	-3.5%	-3.1%	-1.7%	-1.8%	-0.6%	-0.3%	1.1%	2.4%	1.1%	0.1%



Student Residing within the District Only									
	Base File			Projected Resident Students					
	2015/16	2016/17	2017/18	2018/19	2019/20	2020/21	2021/22	2022/23	2023/24
K	306	235	213	249	263	249	300	267	270
1	273	292	252	225	255	270	255	306	273
2	329	282	302	263	234	265	280	265	319
3	374	335	306	305	274	245	276	292	276
4	391	379	354	326	319	287	257	290	306
5	396	390	386	355	328	322	290	258	292
6	435	417	404	411	374	347	340	306	273
7	417	437	421	405	414	377	350	342	308
8	409	429	433	437	413	422	385	357	349
K-5	2,069	1,913	1,813	1,723	1,672.6	1,636.6	1,658.1	1,678.6	1,737.4
6-8	1,261	1,283	1,258	1,253	1,200.8	1,145.8	1,075.4	1,004.5	929.9
K-8	3,330	3,196	3,071	2,976	2,873.4	2,782.4	2,733.5	2,683.1	2,667.3



***School Forecasts by Residence***

Attendance Area		Blossom Hill ES										Forecast Date 10/4/2018			
		Historic			Current	Forecasted Resident Students									
		2015/16	2016/17	2017/18	2018/19	2019/20	2020/21	2021/22	2022/23	2023/24	2024/25	2025/26	2026/27	2027/28	2028/29
K-5	K	104	87	74	89	91.1	84.4	98.1	91.5	91.3	91.3	91.3	91.2	91.2	91.2
	1	95	107	98	79	95.2	97.8	90.7	105.0	97.9	97.7	97.7	97.7	97.6	97.6
	2	116	95	108	98	79.0	95.6	98.2	90.7	105.0	97.9	97.7	97.7	97.7	97.6
	3	126	113	103	111	100.9	81.8	98.9	101.2	93.5	108.1	100.8	100.6	100.6	100.6
	4	144	127	127	106	116.6	106.4	86.3	103.8	106.2	98.1	113.6	105.9	105.7	105.7
	5	140	142	134	128	108.1	119.3	108.9	88.0	105.9	108.4	100.1	115.8	108.0	107.8
	K-5	725	671	644	611	590.9	585.3	581.1	580.2	599.8	601.5	601.2	608.9	600.8	600.5

Attendance Area		Daves Ave ES										Forecast Date 10/4/2018			
		Historic			Current	Forecasted Resident Students									
		2015/16	2016/17	2017/18	2018/19	2019/20	2020/21	2021/22	2022/23	2023/24	2024/25	2025/26	2026/27	2027/28	2028/29
K-5	K	86	66	65	67	75.1	71.7	91.9	72.6	77.8	77.8	77.8	76.6	76.6	76.6
	1	78	77	70	65	65.7	73.6	70.3	90.0	71.1	76.3	76.3	76.3	75.1	75.1
	2	87	83	85	78	70.8	71.6	80.2	76.6	98.1	77.5	83.1	83.1	83.1	81.8
	3	106	92	85	87	81.1	73.7	74.4	83.4	79.7	102.0	80.6	86.4	86.4	86.4
	4	120	106	95	90	89.6	83.6	75.9	76.7	85.9	82.0	105.1	83.0	89.0	89.0
	5	123	115	105	96	88.2	87.8	81.9	74.4	75.1	84.2	80.4	103.0	81.4	87.3
K-5		600	539	505	483	470.5	462.0	474.6	473.7	487.7	499.8	503.3	508.4	491.6	496.2

Attendance Area		Lexington ES										Forecast Date 10/4/2018			
		Historic			Current	Forecasted Resident Students									
		2015/16	2016/17	2017/18	2018/19	2019/20	2020/21	2021/22	2022/23	2023/24	2024/25	2025/26	2026/27	2027/28	2028/29
K		28	22	15	25	23.5	23.7	24.5	29.7	25.2	25.2	25.2	25.7	25.7	25.7
1		30	25	25	17	25.7	24.2	24.4	25.2	30.6	26.0	26.0	26.0	26.5	26.5
2		36	28	24	26	16.7	25.2	23.8	23.9	24.7	30.0	25.5	25.5	25.5	25.9
3		33	36	28	26	26.5	17.0	25.7	24.2	24.4	25.2	30.6	26.0	26.0	26.0
4		29	35	34	34	27.6	28.1	18.0	27.3	25.7	25.9	26.7	32.4	27.5	27.5
5		23	30	40	33	35.7	28.9	29.5	18.9	28.6	27.0	27.2	28.1	34.0	28.9
K-5		179	176	166	161	155.7	147.1	145.9	149.2	159.2	159.3	161.2	163.7	165.2	160.5

Attendance Area		Van Meter ES										Forecast Date 10/4/2018			
		Historic			Current	Forecasted Resident Students									
		2015/16	2016/17	2017/18	2018/19	2019/20	2020/21	2021/22	2022/23	2023/24	2024/25	2025/26	2026/27	2027/28	2028/29
K		88	60	59	68	73.2	69.0	85.3	73.2	76.1	76.4	76.7	77.0	77.5	77.0
1		70	83	59	64	68.3	73.8	69.6	85.9	73.8	76.7	77.0	78.0	78.1	77.5
2		89	76	85	61	67.5	72.3	78.2	73.8	90.9	78.2	81.2	82.2	83.1	82.0
3		109	93	90	81	64.9	72.2	77.4	83.6	78.9	97.0	83.5	87.4	88.3	88.1
4		97	111	98	96	85.3	68.9	76.5	81.9	88.4	83.5	102.6	89.1	93.0	92.8
5		110	102	107	98	96.3	86.0	69.5	77.1	82.6	89.1	84.1	103.8	90.2	93.0
K-5		563	525	498	468	455.5	442.2	456.5	475.5	490.7	500.9	505.1	517.5	510.2	510.4

Does not include students residing outside of the L.G.U.S.D. boundaries.

***School Forecasts by Residence***

Attendance Area		Fisher MS										Forecast Date 10/4/2018			
		Historic			Current	Forecasted Resident Students									
		2015/16	2016/17	2017/18	2018/19	2019/20	2020/21	2021/22	2022/23	2023/24	2024/25	2025/26	2026/27	2027/28	2028/29
K		306	235	213	249	262.9	248.8	299.8	266.9	270.4	270.7	271.1	270.5	271.0	270.5
1		273	292	252	225	254.9	269.5	255.0	306.2	273.4	276.6	277.0	278.0	277.2	276.6
2		329	282	302	263	234.0	264.8	280.4	265.0	318.7	283.5	287.5	288.5	289.4	287.4
3		374	335	306	305	273.5	244.6	276.4	292.4	276.4	332.5	295.5	300.5	301.4	301.1
4		391	379	354	326	319.0	286.9	256.7	289.7	306.3	289.5	348.0	310.3	315.2	315.0
5		396	390	386	355	328.3	322.0	289.8	258.4	292.2	308.6	291.8	350.8	313.5	316.9
6		435	417	404	411	374.0	346.7	340.1	305.5	272.8	308.5	325.6	308.6	370.4	330.1
7		417	437	421	405	413.8	377.2	350.1	342.4	307.8	274.6	310.9	328.5	311.3	372.2
8		409	429	433	437	413.0	421.9	385.2	356.6	349.3	313.4	280.7	317.8	335.8	317.1
K-5		2,069	1,913	1,813	1,723	1,672.6	1,636.6	1,658.1	1,678.6	1,737.4	1,761.4	1,770.9	1,798.6	1,767.7	1,767.5
6-8		1,261	1,283	1,258	1,253	1,200.8	1,145.8	1,075.4	1,004.5	929.9	896.5	917.2	954.9	1,017.5	1,019.4

Does not include students residing outside of the L.G.U.S.D. boundaries.

### **Attendance Matrix**

Three attendance matrices have been included to provide a better understanding of where students reside and where they attend school. **Remember, Davis Demographics Forecasts are based upon where the students reside, not where they attend school. Davis Demographics uses the actual location of where the students reside, as opposed to their school of enrollment, in order to provide the most accurate prediction of future facilities adjustments.** Therefore, since the Forecasts are based upon where the students reside, the figures used as a base for each school's resident Forecast may differ from the actual reported enrollment for each school.

These attendance matrices act as a check and balance for student accounting. They show where the students reside (in what School of Residence) based upon our address matching capabilities and what school they attend (School of Attendance) based upon data in the student file supplied by the District. The inclusion of these matrices is essential to showing how the students used in the Forecasts match up to the District's records of enrollment for each school. The best way to plan for future facilities changes is to know where the next group of students will be residing, not necessarily which school they are currently attending.

### **READING THE MATRIX**

Looking at the K-8 Attendance Matrix below, let's begin with Blossom Hill ES as an example. Following down the first column with the Blossom Hill ES heading, there are 523 students who attend Blossom Hill ES *and* reside in the Blossom Hill ES attendance area. Continuing downward, 22 students attend Blossom Hill ES that resides in the Daves Avenue ES attendance area. Next the matrix shows that 4 students attend Blossom Hill ES and reside in Lexington's attendance area, and so on.

The row Out of District/Unmatched refers to students who live completely outside of the Los Gatos Union School District or were unable to be geocoded but attend one of the District's schools. There are 6 Out of District students attending Blossom Hill ES. Total Enrollment shows the total number of students attending a school regardless of where they reside, and reflects the District's enrollment counts for each school. There is a total of 584 students attending Blossom Hill ES.

The next step is to read across the matrix, beginning with the Blossom Hill ES attendance area row. We understand that the 523 represents the total number of students that reside in the Blossom Hill ES attendance area and attend Blossom Hill ES. The next column, Daves Avenue ES, refers to the number of students that reside in the Blossom Hill ES attendance area, but attend Daves Avenue ES. There are currently 22 students that reside in the Blossom Hill ES attendance area and attend Daves Avenue ES.

The Total Residence column is the total number of students living in each particular attendance area. There are 611 K-5 students residing in the Blossom Hill ES attendance area. The Total Attendance row is the actual number of students used as the base or actual number for each attendance area in the Fall 2018/19 Forecasts .

K-8 Attendance Matrix								
School of Residence	School of Enrollment					Total Residence	Transfers Out	% Resident Enrollment
	School	Blossom Hill ES	Daves Ave ES	Lexington ES	Van Meter ES	Fisher MS		
	Blossom Hill ES	523	22	4	62		611	88 85.6%
	Daves Ave ES	22	420	8	33		483	63 87.0%
	Lexington ES	4	12	125	20		161	36 77.6%
	Van Meter ES	29	23	3	413		468	55 88.2%
	Fisher MS					1,253	1,253	
	Out of District/Unmatched	6	14	4	8	14	46	
	Total Enrollment	584	491	144	536	1,267	3,022	
	Transfers In	61	71	19	123	14	288	
	Transfer %	10.4%	14.5%	13.2%	22.9%	1.1%	9.5%	

*Table 6 – K-8 Attendance Matrix*

**Student Capture Rate Analysis**

Estimated student capture rates are used to give the district a rough estimate of the school age population of each attendance area compared to the number of L.G.U.S.D. students residing there. School age population is derived from overlaying L.G.U.S.D. attendance areas onto ESRI's estimated population by census block data.

L.G.U.S.D is capturing approximately 94% of the school age population residing within the district's boundaries.

<b>Student Capture Rate by Area K-8</b>				
<b>Area</b>	<b>ESRI 2018 Estimated Grade K-8 (Age 5-13) Population<sup>1</sup></b>	<b>2018/19 K-8 Students Enrolled in LGUSD<sup>2</sup></b>	<b>% Population</b>	<b>Potential Students</b>
<b>Blossom Hills ES</b>	1,095	1,061	<b>97%</b>	<b>34</b>
<b>Daves Ave ES</b>	966	832	<b>86%</b>	<b>134</b>
<b>Lexington ES</b>	288	264	<b>92%</b>	<b>24</b>
<b>Van Meter ES</b>	831	819	<b>99%</b>	<b>12</b>
<b>Area Totals</b>	<b>3,180</b>	<b>2,976</b>	<b>94%</b>	<b>204</b>

1. ESRI Estimate

2. Students residing in LGUSD and enrolled in a LGUSD school. Including Special Education Students

3. Does not include LGUSD students residing out of the district boundaries

<b>Student Capture Rate by Area K-8</b>			
<b>Area</b>	<b>2016/17 K-8 Students Capture Rate</b>	<b>2018/19 K-8 Students Capture Rate</b>	<b>Difference</b>
<b>Blossom Hills ES</b>	94%	97%	<b>3.0%</b>
<b>Daves Ave ES</b>	87%	86%	<b>-1.0%</b>
<b>Lexington ES</b>	93%	92%	<b>-1.0%</b>
<b>Van Meter ES</b>	96%	99%	<b>3.0%</b>
<b>Area Totals</b>	<b>92%</b>	<b>94%</b>	<b>2.0%</b>

### **Staffing Forecasts**

SchoolSite Staffing Forecasts is a way to ensure your district has the appropriate staff to fulfill future classroom requirements. SchoolSite Staffing Forecasts utilize current resident and enrollment information, as well as historic student mobility to calculate an estimated enrollment for each school. This method of strategic and planned staffing can help to evaluate the current state of facilities, as well as their future needs.

### **Two-Year Staffing Forecasts**

Mid-term to long-term facilities planning is always best when it is based upon the resident location of future student populations, rather than the enrollment at the individual schools. However, a two year projected enrollment can be used to assist with estimating staffing and budget requirements over the short term.

### **Methodology for Schools with Attendance Boundaries**

Calculating a staffing Forecast for schools with attendance boundaries is different from calculating it for a school without attendance boundaries. For school with attendance boundaries, the two year projected enrollment is calculated using a combination of future resident population and historic transfer patterns for each school.

Similar to the mobility factors in the residence Forecasts, a cohort is derived by averaging four years of past transfer patterns. The cohort is calculated for both transfers into and out of each school for each grade between 1 and 12 that the school serves. This cohort is then applied to the current transfer by grade of the base year students to come up with estimated in and estimated out transfers for the future years. To estimate the transfers in and transfers out for the lowest grade served at each school, an average is taken of the last four years of transfers. Finally, projected enrollment by grade for each school is calculated by taking the projected resident population and adding the estimated transfers in and transfers out.

### **Methodology for Schools without Attendance Boundaries**

To calculate a staffing Forecast for schools without attendance boundaries, a different method of calculation is used. Transfers in and transfers out for the lowest grade served at each school are estimated by taking an average of the last four years of transfers. Each subsequent grade is calculated using the non-weighted cohort survival method and applied to the current year's enrollment.

Please Note: Due to an anomaly in the data the 5<sup>th</sup> grade cohort was adjusted slightly. This adjustment may have changed the 5<sup>th</sup> grade forecast by less than 1%.

**Staffing Forecasts by School**

School	Blossom Hill ES			10/4/2018		
	Historic Enrollment			Current	Forecasted School Enrollment	
	2015/16	2016/17	2017/18	2018/19	2019/20	2020/21
K	90	89	81	90	90.1	83.4
1	80	94	96	86	96.0	98.6
2	105	83	88	94	84.2	100.8
3	118	105	100	92	99.7	80.6
4	142	121	116	102	95.9	85.7
5	133	142	114	114	101.7	112.9
K-5	668	634	595	578	567.8	562.2

School	Daves Ave ES			10/4/2018		
	Historic Enrollment			Current	Forecasted School Enrollment	
	2015/16	2016/17	2017/18	2018/19	2019/20	2020/21
K	91	68	63	63	75.4	72.0
1	86	80	65	64	58.1	66.0
2	89	87	93	69	69.0	69.8
3	95	91	85	93	66.6	59.2
4	113	101	94	92	99.0	93.0
5	114	107	113	96	94.0	93.6
K-5	588	534	513	477	462.1	453.6

School	Lexington ES			10/4/2018		
	Historic Enrollment			Current	Forecasted School Enrollment	
	2015/16	2016/17	2017/18	2018/19	2019/20	2020/21
K	28	18	14	24	22.0	22.2
1	25	27	20	15	25.9	24.4
2	30	25	25	21	14.8	23.3
3	29	30	23	27	20.5	11.0
4	22	28	26	28	25.9	26.4
5	21	22	29	25	28.0	21.2
K-5	155	150	137	140	137.1	128.5

School	Van Meter ES			10/4/2018		
	Historic Enrollment			Current	Forecasted School Enrollment	
	2015/16	2016/17	2017/18	2018/19	2019/20	2020/21
K	97	60	55	72	75.5	71.3
1	82	91	71	60	75.8	81.3
2	106	87	96	79	64.6	69.4
3	132	110	98	93	83.2	90.5
4	115	129	118	104	96.8	80.4
5	128	120	134	120	106.5	96.2
K-5	660	597	572	528	502.3	489.0



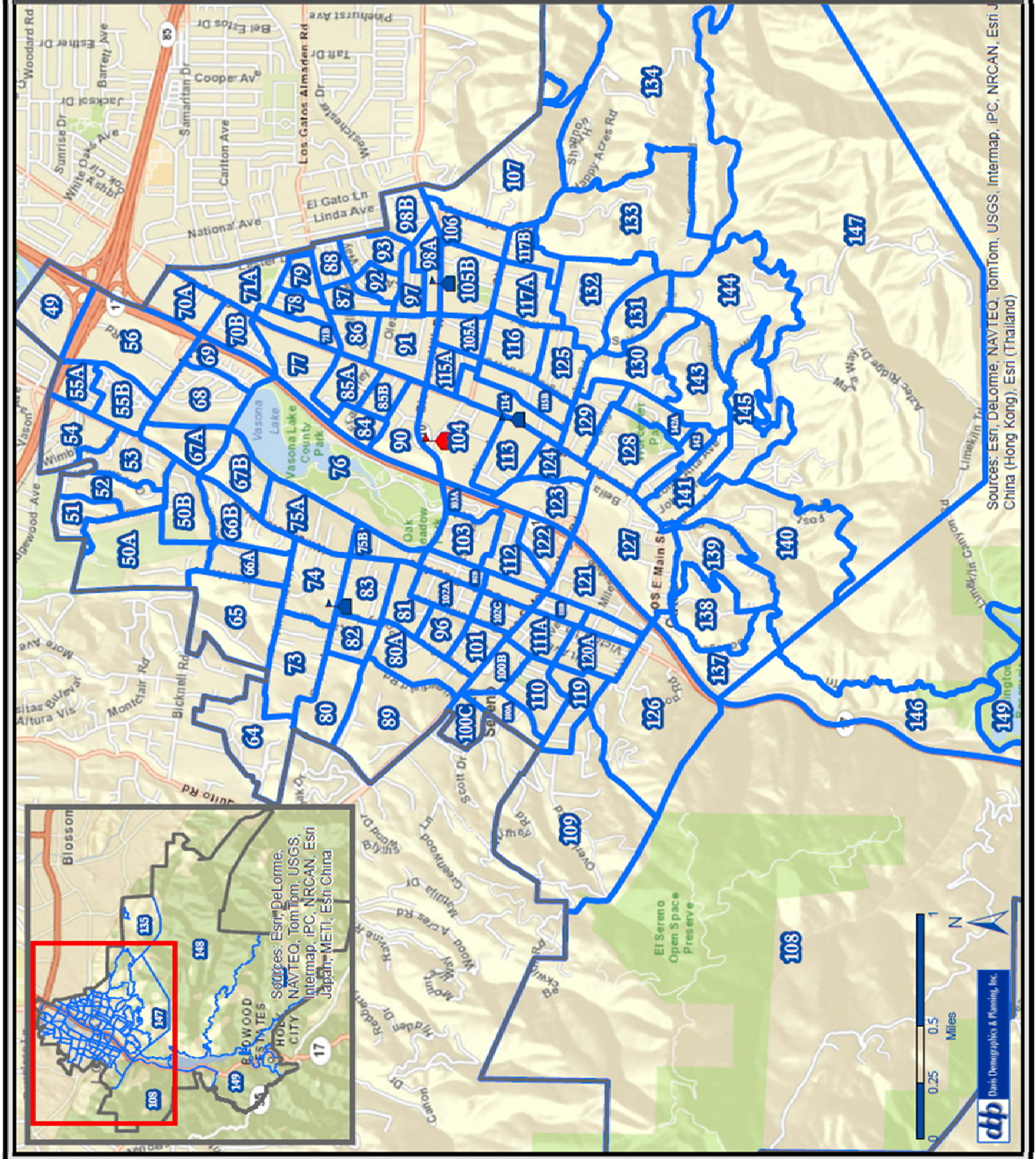
**Staffing Forecasts by School**

School	Fisher MS			10/4/2018		
	Historic Enrollment			Current	Forecasted School Enrollment	
	2015/16	2016/17	2017/18	2018/19	2019/20	2020/21
6	440	423	410	417	379.8	352.8
7	424	442	425	410	418.9	381.9
8	414	437	440	440	418.6	427.6
5-8	1,278	1,302	1,275	1,267	1,217.3	1,162.3

District Wide Forecast - No Residential Development																		
Projection Date 10/03/2018																		
		Historic						Base File	Forecasted Students									
		2012/13	2013/14	2014/15	2015/16	2016/17	2017/18	2018/19	2019/20	2020/21	2021/22	2022/23	2023/24	2024/25	2025/26	2026/27	2027/28	2028/29
Resident Students by Grade	K	280	298	272	306	235	213	249	262.6	247.6	298.0	265.0	268.2	268.2	268.2	266.6	266.6	266.6
	1	321	300	301	273	292	252	225	254.6	268.2	252.8	303.8	270.8	273.7	273.7	273.7	272.2	272.2
	2	333	351	327	329	282	302	263	233.7	263.4	278.0	262.0	315.6	280.2	283.8	283.8	283.8	282.1
	3	346	343	362	374	335	306	305	273.2	243.3	273.9	289.2	272.6	328.4	291.3	295.2	295.2	295.2
	4	371	364	376	391	379	354	326	318.8	285.5	254.1	286.4	302.2	284.8	343.1	304.6	308.5	308.5
	5	376	377	401	396	390	386	355	328.0	320.7	287.4	255.2	288.3	303.9	286.4	344.6	306.6	310.2
	6	390	394	399	435	417	404	411	373.7	345.3	337.6	302.3	268.7	303.6	319.9	301.5	362.6	322.7
	7	360	409	406	417	437	421	405	413.6	375.9	347.6	339.4	304.0	269.9	305.4	321.6	303.2	364.3
	8	376	374	426	409	429	433	437	412.7	420.6	382.7	353.5	345.5	308.8	275.3	310.9	327.6	308.5
Subtotal Resident Students	K-5	2,027	2,033	2,039	2,069	1,913	1,813	1,723	1,670.9	1,628.7	1,644.2	1,661.6	1,717.7	1,739.2	1,746.5	1,768.5	1,732.9	1,734.8
	6-8	1,126	1,177	1,231	1,261	1,283	1,258	1,253	1,200.0	1,141.8	1,067.9	995.2	918.2	882.3	900.6	934.0	993.4	995.5
	K-8	3,153	3,210	3,270	3,330	3,196	3,071	2,976	2,870.9	2,770.5	2,712.1	2,656.8	2,635.9	2,621.5	2,647.1	2,702.5	2,726.3	2,730.3
Unmatched Students	K-5	2	3	6	0	0	2	1	0.0	0.0	0.0	0.0	0.0	0.0	0.0	0.0	0.0	0.0
	6-8	1	1	0	1	0	0	1	0.0	0.0	0.0	0.0	0.0	0.0	0.0	0.0	0.0	0.0
	K-8	3	4	6	1	0	2	2	0.0	0.0	0.0	0.0	0.0	0.0	0.0	0.0	0.0	0.0
Inter-District Transfers Students	K-5	29	32	29	37	39	33	31	31.0	31.0	31.0	31.0	31.0	31.0	31.0	31.0	31.0	31.0
	6-8	14	18	14	14	19	16	13	13.0	13.0	13.0	13.0	13.0	13.0	13.0	13.0	13.0	13.0
	K-8	43	50	43	51	58	49	44	44.0	44.0	44.0	44.0	44.0	44.0	44.0	44.0	44.0	44.0
Total Enrollment	K-5	2,058	2,068	2,074	2,106	1,952	1,848	1,755	1,701.9	1,659.7	1,675.2	1,692.6	1,748.7	1,770.2	1,777.5	1,799.5	1,763.9	1,765.8
	6-8	1,141	1,196	1,245	1,276	1,302	1,274	1,267	1,213.0	1,154.8	1,080.9	1,008.2	931.2	895.3	913.6	947.0	1,006.4	1,008.5
	K-8	3,199	3,264	3,319	3,382	3,254	3,122	3,022	2,914.9	2,814.5	2,756.1	2,700.8	2,679.9	2,665.5	2,691.1	2,746.5	2,770.3	2,774.3
Change %	K-8		65	55	63	-128	-132	-100	-107.1	-100.4	-58.4	-55.3	-20.9	-14.4	25.6	55.4	23.8	4.0
	%		2.0%	1.7%	1.9%	-3.8%	-4.1%	-3.2%	-3.5%	-3.4%	-2.1%	-2.0%	-0.8%	-0.5%	1.0%	2.1%	0.9%	0.1%

# Los Gatos Union School District

## Study Areas



**Los Gatos USD****2018/19 Forecast Report**

Study Area 49 Projection Date 10/3/2018

	CURRENT	PROJECTED RESIDENT STUDENTS						
	2018	2019	2020	2021	2022	2023	2024	2025
K	2.0	2.1	1.9	2.2	2.1	2.0	2.0	2.0
1	1.0	2.1	2.2	2.0	2.4	2.2	2.2	2.2
2	3.0	1.0	2.1	2.2	2.0	2.4	2.2	2.2
3	4.0	3.1	1.0	2.2	2.3	2.1	2.4	2.3
4	5.0	4.2	3.2	1.1	2.3	2.4	2.2	2.6
5	3.0	5.1	4.3	3.3	1.1	2.4	2.4	2.2
6	4.0	3.2	5.4	4.5	3.5	1.2	2.5	2.6
7	6.0	4.0	3.2	5.4	4.5	3.5	1.2	2.5
8	6.0	6.2	4.1	3.3	5.6	4.7	3.6	1.2
K-5	18.0	17.6	14.7	13.0	12.2	13.5	13.4	13.5
6-8	16.0	13.4	12.7	13.2	13.6	9.4	7.3	6.3
K-8	34.0	31.0	27.4	26.2	25.8	22.9	20.7	19.8

Study Area 50A Projection Date 10/3/2018

	CURRENT	PROJECTED RESIDENT STUDENTS						
	2018	2019	2020	2021	2022	2023	2024	2025
K	0.0	0.0	0.0	0.0	0.0	0.0	0.0	0.0
1	0.0	0.0	0.0	0.0	0.0	0.0	0.0	0.0
2	1.0	0.0	0.0	0.0	0.0	0.0	0.0	0.0
3	0.0	1.0	0.0	0.0	0.0	0.0	0.0	0.0
4	0.0	0.0	1.1	0.0	0.0	0.0	0.0	0.0
5	2.0	0.0	0.0	1.0	0.0	0.0	0.0	0.0
6	0.0	2.1	0.0	0.0	1.1	0.0	0.0	0.0
7	1.0	0.0	2.0	0.0	0.0	1.1	0.0	0.0
8	0.0	1.0	0.0	2.0	0.0	0.0	1.1	0.0
K-5	3.0	1.0	1.1	1.0	0.0	0.0	0.0	0.0
6-8	1.0	3.1	2.0	2.0	1.1	1.1	1.1	0.0
K-8	4.0	4.1	3.1	3.0	1.1	1.1	1.1	0.0

**Los Gatos USD****2018/19 Forecast Report**

Study Area 50B Projection Date 10/3/2018

	CURRENT	PROJECTED RESIDENT STUDENTS						
	2018	2019	2020	2021	2022	2023	2024	2025
K	2.0	2.3	2.3	3.0	2.2	2.4	2.4	2.4
1	1.0	2.0	2.3	2.2	2.9	2.2	2.4	2.4
2	4.0	1.1	2.1	2.5	2.4	3.2	2.4	2.6
3	1.0	4.2	1.1	2.2	2.6	2.5	3.3	2.5
4	5.0	1.0	4.3	1.2	2.3	2.7	2.6	3.4
5	3.0	4.9	1.0	4.2	1.1	2.2	2.6	2.5
6	2.0	3.1	5.0	1.0	4.3	1.2	2.3	2.7
7	4.0	2.0	3.1	5.0	1.0	4.3	1.2	2.3
8	3.0	4.0	2.0	3.1	5.0	1.0	4.3	1.2
K-5	16.0	15.5	13.1	15.3	13.5	15.2	15.7	15.8
6-8	9.0	9.1	10.1	9.1	10.3	6.5	7.8	6.2
K-8	25.0	24.6	23.2	24.4	23.8	21.7	23.5	22.0

Study Area 51 Projection Date 10/3/2018

	CURRENT	PROJECTED RESIDENT STUDENTS						
	2018	2019	2020	2021	2022	2023	2024	2025
K	1.0	1.0	0.9	1.1	1.0	1.0	1.0	1.0
1	2.0	1.0	1.0	0.9	1.1	1.0	1.0	1.0
2	1.0	2.2	1.1	1.1	1.0	1.2	1.1	1.1
3	0.0	1.0	2.3	1.1	1.1	1.0	1.2	1.1
4	2.0	0.0	1.1	2.3	1.1	1.2	1.1	1.3
5	3.0	2.0	0.0	1.0	2.3	1.1	1.2	1.1
6	3.0	3.1	2.0	0.0	1.1	2.4	1.2	1.2
7	4.0	3.0	3.1	2.0	0.0	1.1	2.3	1.1
8	3.0	4.0	3.0	3.1	2.0	0.0	1.1	2.3
K-5	9.0	7.2	6.4	7.5	7.6	6.5	6.6	6.6
6-8	10.0	10.1	8.1	5.1	3.1	3.5	4.6	4.6
K-8	19.0	17.3	14.5	12.6	10.7	10.0	11.2	11.2



**Los Gatos USD****2018/19 Forecast Report**

Study Area 52 Projection Date 10/3/2018

	CURRENT	PROJECTED RESIDENT STUDENTS						
	2018	2019	2020	2021	2022	2023	2024	2025
K	1.0	1.0	0.9	1.1	1.0	1.0	1.0	1.0
1	0.0	1.0	1.0	0.9	1.1	1.0	1.0	1.0
2	1.0	0.0	1.1	1.1	1.0	1.2	1.1	1.1
3	2.0	1.0	0.0	1.1	1.1	1.0	1.2	1.1
4	3.0	2.1	1.1	0.0	1.1	1.2	1.1	1.3
5	2.0	2.9	2.0	1.0	0.0	1.1	1.2	1.1
6	1.0	2.1	3.0	2.1	1.1	0.0	1.2	1.2
7	1.0	1.0	2.0	3.0	2.1	1.1	0.0	1.1
8	3.0	1.0	1.0	2.0	3.0	2.1	1.1	0.0
K-5	9.0	8.0	6.1	5.2	5.3	6.5	6.6	6.6
6-8	5.0	4.1	6.0	7.1	6.2	3.2	2.3	2.3
K-8	14.0	12.1	12.1	12.3	11.5	9.7	8.9	8.9

Study Area 53 Projection Date 10/3/2018

	CURRENT	PROJECTED RESIDENT STUDENTS						
	2018	2019	2020	2021	2022	2023	2024	2025
K	0.0	0.0	0.0	0.0	0.0	0.0	0.0	0.0
1	2.0	0.0	0.0	0.0	0.0	0.0	0.0	0.0
2	1.0	2.2	0.0	0.0	0.0	0.0	0.0	0.0
3	1.0	1.0	2.3	0.0	0.0	0.0	0.0	0.0
4	2.0	1.0	1.1	2.3	0.0	0.0	0.0	0.0
5	1.0	2.0	1.0	1.0	2.3	0.0	0.0	0.0
6	5.0	1.0	2.0	1.0	1.1	2.4	0.0	0.0
7	7.0	4.9	1.0	2.0	1.0	1.1	2.3	0.0
8	4.0	7.0	4.9	1.0	2.0	1.0	1.1	2.3
K-5	7.0	6.2	4.4	3.3	2.3	0.0	0.0	0.0
6-8	16.0	12.9	7.9	4.0	4.1	4.5	3.4	2.3
K-8	23.0	19.1	12.3	7.3	6.4	4.5	3.4	2.3

**Los Gatos USD****2018/19 Forecast Report**

Study Area 54 Projection Date 10/3/2018

	CURRENT	PROJECTED RESIDENT STUDENTS						
	2018	2019	2020	2021	2022	2023	2024	2025
K	5.0	5.1	4.7	5.5	5.1	5.1	5.1	5.1
1	3.0	4.9	5.0	4.6	5.4	5.0	5.0	5.0
2	3.0	3.3	5.3	5.5	5.0	5.9	5.5	5.5
3	7.0	3.1	3.4	5.6	5.7	5.2	6.2	5.7
4	5.0	7.2	3.2	3.5	5.7	5.9	5.4	6.3
5	5.0	4.9	7.1	3.1	3.4	5.6	5.8	5.3
6	7.0	5.2	5.0	7.3	3.2	3.5	5.8	5.9
7	9.0	6.9	5.1	5.0	7.2	3.2	3.5	5.7
8	9.0	9.0	6.9	5.1	5.0	7.2	3.2	3.5
K-5	28.0	28.5	28.7	27.8	30.3	32.7	33.0	32.9
6-8	25.0	21.1	17.0	17.4	15.4	13.9	12.5	15.1
K-8	53.0	49.6	45.7	45.2	45.7	46.6	45.5	48.0

Study Area 55A Projection Date 10/3/2018

	CURRENT	PROJECTED RESIDENT STUDENTS						
	2018	2019	2020	2021	2022	2023	2024	2025
K	0.0	0.0	0.0	0.0	0.0	0.0	0.0	0.0
1	0.0	0.0	0.0	0.0	0.0	0.0	0.0	0.0
2	0.0	0.0	0.0	0.0	0.0	0.0	0.0	0.0
3	0.0	0.0	0.0	0.0	0.0	0.0	0.0	0.0
4	0.0	0.0	0.0	0.0	0.0	0.0	0.0	0.0
5	0.0	0.0	0.0	0.0	0.0	0.0	0.0	0.0
6	0.0	0.0	0.0	0.0	0.0	0.0	0.0	0.0
7	0.0	0.0	0.0	0.0	0.0	0.0	0.0	0.0
8	0.0	0.0	0.0	0.0	0.0	0.0	0.0	0.0
K-5	0.0	0.0	0.0	0.0	0.0	0.0	0.0	0.0
6-8	0.0	0.0	0.0	0.0	0.0	0.0	0.0	0.0
K-8	0.0	0.0	0.0	0.0	0.0	0.0	0.0	0.0



**Los Gatos USD****2018/19 Forecast Report**

Study Area 55B Projection Date 10/3/2018

	CURRENT	PROJECTED RESIDENT STUDENTS						
	2018	2019	2020	2021	2022	2023	2024	2025
K	4.0	4.1	3.7	4.4	4.1	4.1	4.1	4.1
1	3.0	4.3	4.4	4.0	4.7	4.4	4.4	4.4
2	2.0	3.0	4.3	4.4	4.0	4.7	4.4	4.4
3	3.0	2.1	3.1	4.4	4.5	4.1	4.9	4.5
4	2.0	3.2	2.2	3.2	4.6	4.7	4.3	5.1
5	3.0	2.0	3.2	2.2	3.3	4.7	4.8	4.4
6	4.0	3.2	2.2	3.4	2.3	3.5	5.0	5.1
7	8.0	4.0	3.2	2.2	3.4	2.3	3.5	5.0
8	2.0	8.2	4.1	3.3	2.2	3.5	2.4	3.6
K-5	17.0	18.7	20.9	22.6	25.2	26.7	26.9	26.9
6-8	14.0	15.4	9.5	8.9	7.9	9.3	10.9	13.7
K-8	31.0	34.1	30.4	31.5	33.1	36.0	37.8	40.6

Study Area 56 Projection Date 10/3/2018

	CURRENT	PROJECTED RESIDENT STUDENTS						
	2018	2019	2020	2021	2022	2023	2024	2025
K	3.0	3.1	2.8	3.3	3.1	3.1	3.1	3.1
1	2.0	3.2	3.3	3.0	3.6	3.3	3.3	3.3
2	4.0	2.0	3.2	3.3	3.0	3.6	3.3	3.3
3	5.0	4.1	2.1	3.3	3.4	3.1	3.7	3.4
4	6.0	5.2	4.3	2.2	3.5	3.6	3.3	3.8
5	11.0	6.1	5.4	4.4	2.2	3.5	3.6	3.3
6	7.0	11.7	6.5	5.7	4.7	2.3	3.8	3.9
7	9.0	7.0	11.7	6.5	5.7	4.7	2.3	3.8
8	10.0	9.3	7.2	12.0	6.7	5.8	4.8	2.4
K-5	31.0	23.7	21.1	19.5	18.8	20.2	20.3	20.2
6-8	26.0	28.0	25.4	24.2	17.1	12.8	10.9	10.1
K-8	57.0	51.7	46.5	43.7	35.9	33.0	31.2	30.3

**Los Gatos USD****2018/19 Forecast Report**

Study Area 64 Projection Date 10/3/2018

	CURRENT	PROJECTED RESIDENT STUDENTS						
	2018	2019	2020	2021	2022	2023	2024	2025
K	1.0	1.2	1.1	1.5	1.1	1.2	1.2	1.2
1	1.0	1.0	1.1	1.1	1.5	1.1	1.2	1.2
2	3.0	1.1	1.1	1.2	1.2	1.6	1.2	1.3
3	0.0	3.1	1.1	1.1	1.3	1.3	1.7	1.2
4	4.0	0.0	3.2	1.2	1.1	1.3	1.3	1.7
5	3.0	3.9	0.0	3.1	1.1	1.1	1.3	1.3
6	5.0	3.1	4.0	0.0	3.2	1.2	1.2	1.3
7	4.0	4.9	3.1	4.0	0.0	3.2	1.2	1.1
8	3.0	4.0	4.9	3.1	4.0	0.0	3.2	1.2
K-5	12.0	10.3	7.6	9.2	7.3	7.6	7.9	7.9
6-8	12.0	12.0	12.0	7.1	7.2	4.4	5.6	3.6
K-8	24.0	22.3	19.6	16.3	14.5	12.0	13.5	11.5

Study Area 65 Projection Date 10/3/2018

	CURRENT	PROJECTED RESIDENT STUDENTS						
	2018	2019	2020	2021	2022	2023	2024	2025
K	0.0	0.0	0.0	0.0	0.0	0.0	0.0	0.0
1	0.0	0.0	0.0	0.0	0.0	0.0	0.0	0.0
2	0.0	0.0	0.0	0.0	0.0	0.0	0.0	0.0
3	0.0	0.0	0.0	0.0	0.0	0.0	0.0	0.0
4	0.0	0.0	0.0	0.0	0.0	0.0	0.0	0.0
5	1.0	0.0	0.0	0.0	0.0	0.0	0.0	0.0
6	0.0	1.0	0.0	0.0	0.0	0.0	0.0	0.0
7	2.0	0.0	1.0	0.0	0.0	0.0	0.0	0.0
8	0.0	2.0	0.0	1.0	0.0	0.0	0.0	0.0
K-5	1.0	0.0	0.0	0.0	0.0	0.0	0.0	0.0
6-8	2.0	3.0	1.0	1.0	0.0	0.0	0.0	0.0
K-8	3.0	3.0	1.0	1.0	0.0	0.0	0.0	0.0

**Los Gatos USD****2018/19 Forecast Report**

Study Area 66A Projection Date 10/3/2018

	CURRENT	PROJECTED RESIDENT STUDENTS						
	2018	2019	2020	2021	2022	2023	2024	2025
K	1.0	1.2	1.1	1.5	1.1	1.2	1.2	1.2
1	2.0	1.0	1.1	1.1	1.5	1.1	1.2	1.2
2	1.0	2.2	1.1	1.2	1.2	1.6	1.2	1.3
3	2.0	1.0	2.3	1.1	1.3	1.3	1.7	1.2
4	0.0	2.1	1.1	2.3	1.1	1.3	1.3	1.7
5	0.0	0.0	2.0	1.0	2.3	1.1	1.3	1.3
6	0.0	0.0	0.0	2.1	1.1	2.4	1.2	1.3
7	0.0	0.0	0.0	0.0	2.1	1.1	2.3	1.1
8	2.0	0.0	0.0	0.0	0.0	2.1	1.1	2.3
K-5	6.0	7.5	8.7	8.2	8.5	7.6	7.9	7.9
6-8	2.0	0.0	0.0	2.1	3.2	5.6	4.6	4.7
K-8	8.0	7.5	8.7	10.3	11.7	13.2	12.5	12.6

Study Area 66B Projection Date 10/3/2018

	CURRENT	PROJECTED RESIDENT STUDENTS						
	2018	2019	2020	2021	2022	2023	2024	2025
K	1.0	1.2	1.1	1.5	1.1	1.2	1.2	1.2
1	2.0	1.0	1.1	1.1	1.5	1.1	1.2	1.2
2	0.0	2.2	1.1	1.2	1.2	1.6	1.2	1.3
3	5.0	0.0	2.3	1.1	1.3	1.3	1.7	1.2
4	4.0	5.2	0.0	2.3	1.1	1.3	1.3	1.7
5	2.0	3.9	5.0	0.0	2.3	1.1	1.3	1.3
6	1.0	2.1	4.0	5.2	0.0	2.4	1.2	1.3
7	1.0	1.0	2.0	4.0	5.1	0.0	2.3	1.1
8	5.0	1.0	1.0	2.0	4.0	5.1	0.0	2.3
K-5	14.0	13.5	10.6	7.2	8.5	7.6	7.9	7.9
6-8	7.0	4.1	7.0	11.2	9.1	7.5	3.5	4.7
K-8	21.0	17.6	17.6	18.4	17.6	15.1	11.4	12.6

**Los Gatos USD****2018/19 Forecast Report**

Study Area 67A Projection Date 10/3/2018

	CURRENT	PROJECTED RESIDENT STUDENTS						
	2018	2019	2020	2021	2022	2023	2024	2025
K	0.0	0.0	0.0	0.0	0.0	0.0	0.0	0.0
1	0.0	0.0	0.0	0.0	0.0	0.0	0.0	0.0
2	1.0	0.0	0.0	0.0	0.0	0.0	0.0	0.0
3	0.0	1.0	0.0	0.0	0.0	0.0	0.0	0.0
4	1.0	0.0	1.1	0.0	0.0	0.0	0.0	0.0
5	0.0	1.0	0.0	1.0	0.0	0.0	0.0	0.0
6	0.0	0.0	1.0	0.0	1.1	0.0	0.0	0.0
7	0.0	0.0	0.0	1.0	0.0	1.1	0.0	0.0
8	0.0	0.0	0.0	0.0	1.0	0.0	1.1	0.0
K-5	2.0	2.0	1.1	1.0	0.0	0.0	0.0	0.0
6-8	0.0	0.0	1.0	1.0	2.1	1.1	1.1	0.0
K-8	2.0	2.0	2.1	2.0	2.1	1.1	1.1	0.0

Study Area 67B Projection Date 10/3/2018

	CURRENT	PROJECTED RESIDENT STUDENTS						
	2018	2019	2020	2021	2022	2023	2024	2025
K	0.0	0.0	0.0	0.0	0.0	0.0	0.0	0.0
1	0.0	0.0	0.0	0.0	0.0	0.0	0.0	0.0
2	2.0	0.0	0.0	0.0	0.0	0.0	0.0	0.0
3	0.0	2.1	0.0	0.0	0.0	0.0	0.0	0.0
4	0.0	0.0	2.1	0.0	0.0	0.0	0.0	0.0
5	6.0	0.0	0.0	2.1	0.0	0.0	0.0	0.0
6	2.0	6.2	0.0	0.0	2.2	0.0	0.0	0.0
7	1.0	2.0	6.1	0.0	0.0	2.1	0.0	0.0
8	3.0	1.0	2.0	6.1	0.0	0.0	2.1	0.0
K-5	8.0	2.1	2.1	2.1	0.0	0.0	0.0	0.0
6-8	6.0	9.2	8.1	6.1	2.2	2.1	2.1	0.0
K-8	14.0	11.3	10.2	8.2	2.2	2.1	2.1	0.0

**Los Gatos USD****2018/19 Forecast Report**

Study Area 68 Projection Date 10/3/2018

	CURRENT	PROJECTED RESIDENT STUDENTS						
	2018	2019	2020	2021	2022	2023	2024	2025
K	4.0	4.1	3.7	4.4	4.1	4.1	4.1	4.1
1	4.0	4.3	4.4	4.0	4.7	4.4	4.4	4.4
2	5.0	4.0	4.3	4.4	4.0	4.7	4.4	4.4
3	5.0	5.2	4.1	4.4	4.5	4.1	4.9	4.5
4	4.0	5.2	5.4	4.3	4.6	4.7	4.3	5.1
5	9.0	4.1	5.4	5.5	4.4	4.7	4.8	4.4
6	7.0	9.5	4.3	5.7	5.8	4.7	5.0	5.1
7	5.0	7.0	9.5	4.3	5.7	5.8	4.7	5.0
8	6.0	5.2	7.2	9.8	4.5	5.8	6.0	4.8
K-5	31.0	26.9	27.3	27.0	26.3	26.7	26.9	26.9
6-8	18.0	21.7	21.0	19.8	16.0	16.3	15.7	14.9
K-8	49.0	48.6	48.3	46.8	42.3	43.0	42.6	41.8

Study Area 69 Projection Date 10/3/2018

	CURRENT	PROJECTED RESIDENT STUDENTS						
	2018	2019	2020	2021	2022	2023	2024	2025
K	3.0	3.1	2.8	3.3	3.1	3.1	3.1	3.1
1	3.0	3.2	3.3	3.0	3.6	3.3	3.3	3.3
2	1.0	3.0	3.2	3.3	3.0	3.6	3.3	3.3
3	7.0	1.0	3.1	3.3	3.4	3.1	3.7	3.4
4	2.0	7.3	1.1	3.2	3.5	3.6	3.3	3.8
5	3.0	2.0	7.5	1.1	3.3	3.5	3.6	3.3
6	4.0	3.2	2.2	7.9	1.2	3.5	3.8	3.9
7	1.0	4.0	3.2	2.2	7.9	1.2	3.5	3.8
8	4.0	1.0	4.1	3.3	2.2	8.2	1.2	3.6
K-5	19.0	19.6	21.0	17.2	19.9	20.2	20.3	20.2
6-8	9.0	8.2	9.5	13.4	11.3	12.9	8.5	11.3
K-8	28.0	27.8	30.5	30.6	31.2	33.1	28.8	31.5

**Los Gatos USD****2018/19 Forecast Report**

Study Area 70A Projection Date 10/3/2018

	CURRENT	PROJECTED RESIDENT STUDENTS						
	2018	2019	2020	2021	2022	2023	2024	2025
K	0.0	0.3	0.8	1.1	1.5	1.8	2.2	2.5
1	0.0	0.3	0.9	1.4	1.8	2.1	2.5	2.8
2	0.0	0.3	0.9	1.6	2.2	2.5	2.9	3.3
3	1.0	0.3	1.0	1.7	2.4	3.0	3.4	3.8
4	0.0	1.3	1.0	1.7	2.4	3.2	3.8	4.2
5	0.0	0.3	2.0	1.6	2.3	3.1	3.8	4.4
6	0.0	0.3	1.0	2.8	2.4	3.2	4.0	4.8
7	0.0	0.2	0.8	1.5	3.4	3.0	3.8	4.6
8	0.0	0.2	0.8	1.5	2.2	4.1	3.7	4.5
K-5	1.0	2.8	6.6	9.1	12.6	15.7	18.6	21.0
6-8	0.0	0.7	2.6	5.8	8.0	10.3	11.5	13.9
K-8	1.0	3.5	9.2	14.9	20.6	26.0	30.1	34.9

Study Area 70B Projection Date 10/3/2018

	CURRENT	PROJECTED RESIDENT STUDENTS						
	2018	2019	2020	2021	2022	2023	2024	2025
K	3.0	3.1	2.8	3.3	3.1	3.1	3.1	3.1
1	1.0	3.0	3.1	2.8	3.3	3.1	3.1	3.1
2	3.0	1.0	3.2	3.2	3.0	3.5	3.2	3.2
3	3.0	3.2	1.1	3.3	3.4	3.1	3.7	3.4
4	0.0	3.2	3.3	1.2	3.5	3.6	3.3	3.9
5	2.0	0.0	3.2	3.3	1.2	3.5	3.6	3.3
6	0.0	2.1	0.0	3.4	3.6	1.3	3.8	3.8
7	2.0	0.0	2.2	0.0	3.4	3.6	1.3	3.8
8	5.0	2.1	0.0	2.3	0.0	3.6	3.8	1.3
K-5	12.0	13.5	16.7	17.1	17.5	19.9	20.0	20.0
6-8	7.0	4.2	2.2	5.7	7.0	8.5	8.9	8.9
K-8	19.0	17.7	18.9	22.8	24.5	28.4	28.9	28.9

**Los Gatos USD****2018/19 Forecast Report**

Study Area 71A Projection Date 10/3/2018

	CURRENT	PROJECTED RESIDENT STUDENTS						
	2018	2019	2020	2021	2022	2023	2024	2025
K	6.0	6.2	5.6	6.6	6.2	6.1	6.1	6.1
1	2.0	6.4	6.6	6.0	7.1	6.6	6.6	6.6
2	8.0	2.0	6.4	6.6	6.0	7.1	6.6	6.6
3	6.0	8.2	2.1	6.6	6.8	6.2	7.3	6.8
4	1.0	6.3	8.7	2.2	6.9	7.1	6.5	7.7
5	6.0	1.0	6.4	8.8	2.2	7.1	7.3	6.6
6	5.0	6.4	1.1	6.8	9.4	2.3	7.5	7.7
7	7.0	5.0	6.4	1.1	6.8	9.4	2.3	7.5
8	4.0	7.2	5.2	6.6	1.1	7.0	9.6	2.4
K-5	29.0	30.1	35.8	36.8	35.2	40.2	40.4	40.4
6-8	16.0	18.6	12.7	14.5	17.3	18.7	19.4	17.6
K-8	45.0	48.7	48.5	51.3	52.5	58.9	59.8	58.0

Study Area 71B Projection Date 10/3/2018

	CURRENT	PROJECTED RESIDENT STUDENTS						
	2018	2019	2020	2021	2022	2023	2024	2025
K	2.0	2.1	1.9	2.2	2.1	2.0	2.0	2.0
1	0.0	2.1	2.2	2.0	2.4	2.2	2.2	2.2
2	0.0	0.0	2.1	2.2	2.0	2.4	2.2	2.2
3	1.0	0.0	0.0	2.2	2.3	2.1	2.4	2.3
4	0.0	1.0	0.0	0.0	2.3	2.4	2.2	2.6
5	2.0	0.0	1.1	0.0	0.0	2.4	2.4	2.2
6	3.0	2.1	0.0	1.1	0.0	0.0	2.5	2.6
7	2.0	3.0	2.1	0.0	1.1	0.0	0.0	2.5
8	3.0	2.1	3.1	2.2	0.0	1.2	0.0	0.0
K-5	5.0	5.2	7.3	8.6	11.1	13.5	13.4	13.5
6-8	8.0	7.2	5.2	3.3	1.1	1.2	2.5	5.1
K-8	13.0	12.4	12.5	11.9	12.2	14.7	15.9	18.6



**Los Gatos USD****2018/19 Forecast Report**

Study Area 73 Projection Date 10/3/2018

	CURRENT	PROJECTED RESIDENT STUDENTS						
	2018	2019	2020	2021	2022	2023	2024	2025
K	1.0	1.2	1.1	1.5	1.1	1.2	1.2	1.2
1	2.0	1.0	1.1	1.1	1.5	1.1	1.2	1.2
2	3.0	2.2	1.1	1.2	1.2	1.6	1.2	1.3
3	2.0	3.1	2.3	1.1	1.3	1.3	1.7	1.2
4	0.0	2.1	3.2	2.3	1.1	1.3	1.3	1.7
5	3.0	0.0	2.0	3.1	2.3	1.1	1.3	1.3
6	4.0	3.1	0.0	2.1	3.2	2.4	1.2	1.3
7	2.0	4.0	3.1	0.0	2.1	3.2	2.3	1.1
8	2.0	2.0	4.0	3.1	0.0	2.1	3.2	2.3
K-5	11.0	9.6	10.8	10.3	8.5	7.6	7.9	7.9
6-8	8.0	9.1	7.1	5.2	5.3	7.7	6.7	4.7
K-8	19.0	18.7	17.9	15.5	13.8	15.3	14.6	12.6

Study Area 74 Projection Date 10/3/2018

	CURRENT	PROJECTED RESIDENT STUDENTS						
	2018	2019	2020	2021	2022	2023	2024	2025
K	0.0	0.0	0.0	0.0	0.0	0.0	0.0	0.0
1	4.0	0.0	0.0	0.0	0.0	0.0	0.0	0.0
2	0.0	4.4	0.0	0.0	0.0	0.0	0.0	0.0
3	0.0	0.0	4.5	0.0	0.0	0.0	0.0	0.0
4	1.0	0.0	0.0	4.7	0.0	0.0	0.0	0.0
5	3.0	1.0	0.0	0.0	4.6	0.0	0.0	0.0
6	3.0	3.1	1.0	0.0	0.0	4.7	0.0	0.0
7	0.0	3.0	3.1	1.0	0.0	0.0	4.7	0.0
8	2.0	0.0	3.0	3.1	1.0	0.0	0.0	4.7
K-5	8.0	5.4	4.5	4.7	4.6	0.0	0.0	0.0
6-8	5.0	6.1	7.1	4.1	1.0	4.7	4.7	4.7
K-8	13.0	11.5	11.6	8.8	5.6	4.7	4.7	4.7

**Los Gatos USD****2018/19 Forecast Report**

Study Area 75A Projection Date 10/3/2018

	CURRENT	PROJECTED RESIDENT STUDENTS						
	2018	2019	2020	2021	2022	2023	2024	2025
K	7.0	8.1	7.9	10.4	7.8	8.6	8.6	8.6
1	6.0	6.9	8.0	7.8	10.2	7.6	8.4	8.4
2	6.0	6.5	7.5	8.7	8.5	11.1	8.3	9.2
3	12.0	6.2	6.8	7.8	9.1	8.8	11.6	8.6
4	9.0	12.4	6.4	7.0	8.0	9.3	9.1	11.9
5	9.0	8.8	12.1	6.3	6.9	7.8	9.1	8.9
6	9.0	9.3	9.1	12.5	6.5	7.1	8.1	9.4
7	10.0	8.9	9.2	9.0	12.4	6.4	7.0	8.0
8	11.0	10.0	8.9	9.2	9.0	12.4	6.4	7.0
K-5	49.0	48.9	48.7	48.0	50.5	53.2	55.1	55.6
6-8	30.0	28.2	27.2	30.7	27.9	25.9	21.5	24.4
K-8	79.0	77.1	75.9	78.7	78.4	79.1	76.6	80.0

Study Area 75B Projection Date 10/3/2018

	CURRENT	PROJECTED RESIDENT STUDENTS						
	2018	2019	2020	2021	2022	2023	2024	2025
K	1.0	1.2	1.1	1.5	1.1	1.2	1.2	1.2
1	2.0	1.0	1.1	1.1	1.5	1.1	1.2	1.2
2	0.0	2.2	1.1	1.2	1.2	1.6	1.2	1.3
3	3.0	0.0	2.3	1.1	1.3	1.3	1.7	1.2
4	1.0	3.1	0.0	2.3	1.1	1.3	1.3	1.7
5	2.0	1.0	3.0	0.0	2.3	1.1	1.3	1.3
6	0.0	2.1	1.0	3.1	0.0	2.4	1.2	1.3
7	2.0	0.0	2.0	1.0	3.1	0.0	2.3	1.1
8	1.0	2.0	0.0	2.0	1.0	3.1	0.0	2.3
K-5	9.0	8.5	8.6	7.2	8.5	7.6	7.9	7.9
6-8	3.0	4.1	3.0	6.1	4.1	5.5	3.5	4.7
K-8	12.0	12.6	11.6	13.3	12.6	13.1	11.4	12.6

**Los Gatos USD****2018/19 Forecast Report**

Study Area 76 Projection Date 10/3/2018

	CURRENT	PROJECTED RESIDENT STUDENTS						
	2018	2019	2020	2021	2022	2023	2024	2025
K	0.0	0.0	0.0	0.0	0.0	0.0	0.0	0.0
1	0.0	0.0	0.0	0.0	0.0	0.0	0.0	0.0
2	0.0	0.0	0.0	0.0	0.0	0.0	0.0	0.0
3	0.0	0.0	0.0	0.0	0.0	0.0	0.0	0.0
4	0.0	0.0	0.0	0.0	0.0	0.0	0.0	0.0
5	0.0	0.0	0.0	0.0	0.0	0.0	0.0	0.0
6	0.0	0.0	0.0	0.0	0.0	0.0	0.0	0.0
7	0.0	0.0	0.0	0.0	0.0	0.0	0.0	0.0
8	0.0	0.0	0.0	0.0	0.0	0.0	0.0	0.0
K-5	0.0	0.0	0.0	0.0	0.0	0.0	0.0	0.0
6-8	0.0	0.0	0.0	0.0	0.0	0.0	0.0	0.0
K-8	0.0	0.0	0.0	0.0	0.0	0.0	0.0	0.0

Study Area 77 Projection Date 10/3/2018

	CURRENT	PROJECTED RESIDENT STUDENTS						
	2018	2019	2020	2021	2022	2023	2024	2025
K	6.0	6.2	5.6	6.6	6.2	6.1	6.1	6.1
1	3.0	6.0	6.2	5.6	6.6	6.2	6.1	6.1
2	2.0	3.2	6.3	6.5	5.9	7.0	6.5	6.5
3	2.0	2.1	3.3	6.7	6.9	6.3	7.4	6.9
4	2.0	2.1	2.2	3.5	7.0	7.2	6.6	7.8
5	5.0	2.0	2.1	2.2	3.5	7.0	7.2	6.6
6	6.0	5.3	2.1	2.2	2.4	3.8	7.5	7.7
7	1.0	6.1	5.4	2.2	2.3	2.4	3.8	7.6
8	7.0	1.0	6.4	5.7	2.3	2.4	2.5	4.0
K-5	20.0	21.6	25.7	31.1	36.1	39.8	39.9	40.0
6-8	14.0	12.4	13.9	10.1	7.0	8.6	13.8	19.3
K-8	34.0	34.0	39.6	41.2	43.1	48.4	53.7	59.3

**Los Gatos USD****2018/19 Forecast Report**

Study Area 78 Projection Date 10/3/2018

	CURRENT	PROJECTED RESIDENT STUDENTS						
	2018	2019	2020	2021	2022	2023	2024	2025
K	3.0	3.1	2.8	3.3	3.1	3.1	3.1	3.1
1	5.0	3.2	3.3	3.0	3.6	3.3	3.3	3.3
2	2.0	5.0	3.2	3.3	3.0	3.6	3.3	3.3
3	1.0	2.1	5.2	3.3	3.4	3.1	3.7	3.4
4	2.0	1.0	2.2	5.4	3.5	3.6	3.3	3.8
5	5.0	2.0	1.1	2.2	5.5	3.5	3.6	3.3
6	7.0	5.3	2.2	1.1	2.3	5.8	3.8	3.9
7	5.0	7.0	5.3	2.2	1.1	2.3	5.8	3.8
8	7.0	5.2	7.2	5.5	2.2	1.2	2.4	6.0
K-5	18.0	16.4	17.8	20.5	22.1	20.2	20.3	20.2
6-8	19.0	17.5	14.7	8.8	5.6	9.3	12.0	13.7
K-8	37.0	33.9	32.5	29.3	27.7	29.5	32.3	33.9

Study Area 79 Projection Date 10/3/2018

	CURRENT	PROJECTED RESIDENT STUDENTS						
	2018	2019	2020	2021	2022	2023	2024	2025
K	1.0	1.0	0.9	1.1	1.0	1.0	1.0	1.0
1	1.0	1.1	1.1	1.0	1.2	1.1	1.1	1.1
2	3.0	1.0	1.1	1.1	1.0	1.2	1.1	1.1
3	4.0	3.1	1.0	1.1	1.1	1.0	1.2	1.1
4	2.0	4.2	3.2	1.1	1.2	1.2	1.1	1.3
5	4.0	2.0	4.3	3.3	1.1	1.2	1.2	1.1
6	3.0	4.2	2.2	4.5	3.5	1.2	1.3	1.3
7	3.0	3.0	4.2	2.2	4.5	3.5	1.2	1.3
8	4.0	3.1	3.1	4.4	2.2	4.7	3.6	1.2
K-5	15.0	12.4	11.6	8.7	6.6	6.7	6.7	6.7
6-8	10.0	10.3	9.5	11.1	10.2	9.4	6.1	3.8
K-8	25.0	22.7	21.1	19.8	16.8	16.1	12.8	10.5

**Los Gatos USD****2018/19 Forecast Report**

Study Area 80 Projection Date 10/3/2018

	CURRENT	PROJECTED RESIDENT STUDENTS						
	2018	2019	2020	2021	2022	2023	2024	2025
K	0.0	0.0	0.0	0.0	0.0	0.0	0.0	0.0
1	0.0	0.0	0.0	0.0	0.0	0.0	0.0	0.0
2	0.0	0.0	0.0	0.0	0.0	0.0	0.0	0.0
3	0.0	0.0	0.0	0.0	0.0	0.0	0.0	0.0
4	0.0	0.0	0.0	0.0	0.0	0.0	0.0	0.0
5	0.0	0.0	0.0	0.0	0.0	0.0	0.0	0.0
6	2.0	0.0	0.0	0.0	0.0	0.0	0.0	0.0
7	1.0	2.0	0.0	0.0	0.0	0.0	0.0	0.0
8	1.0	1.0	2.0	0.0	0.0	0.0	0.0	0.0
K-5	0.0	0.0	0.0	0.0	0.0	0.0	0.0	0.0
6-8	4.0	3.0	2.0	0.0	0.0	0.0	0.0	0.0
K-8	4.0	3.0	2.0	0.0	0.0	0.0	0.0	0.0

Study Area 80A Projection Date 10/3/2018

	CURRENT	PROJECTED RESIDENT STUDENTS						
	2018	2019	2020	2021	2022	2023	2024	2025
K	2.0	2.3	2.3	3.0	2.2	2.4	2.4	2.4
1	0.0	2.0	2.3	2.2	2.9	2.2	2.4	2.4
2	2.0	0.0	2.1	2.5	2.4	3.2	2.4	2.6
3	1.0	2.1	0.0	2.2	2.6	2.5	3.3	2.5
4	0.0	1.0	2.1	0.0	2.3	2.7	2.6	3.4
5	2.0	0.0	1.0	2.1	0.0	2.2	2.6	2.5
6	1.0	2.1	0.0	1.0	2.2	0.0	2.3	2.7
7	3.0	1.0	2.0	0.0	1.0	2.1	0.0	2.3
8	3.0	3.0	1.0	2.0	0.0	1.0	2.1	0.0
K-5	7.0	7.4	9.8	12.0	12.4	15.2	15.7	15.8
6-8	7.0	6.1	3.0	3.0	3.2	3.1	4.4	5.0
K-8	14.0	13.5	12.8	15.0	15.6	18.3	20.1	20.8



**Los Gatos USD****2018/19 Forecast Report**

Study Area 81 Projection Date 10/3/2018

	CURRENT	PROJECTED RESIDENT STUDENTS						
	2018	2019	2020	2021	2022	2023	2024	2025
K	1.0	1.2	1.1	1.5	1.1	1.2	1.2	1.2
1	0.0	1.0	1.1	1.1	1.5	1.1	1.2	1.2
2	4.0	0.0	1.1	1.2	1.2	1.6	1.2	1.3
3	3.0	4.2	0.0	1.1	1.3	1.3	1.7	1.2
4	1.0	3.1	4.3	0.0	1.1	1.3	1.3	1.7
5	5.0	1.0	3.0	4.2	0.0	1.1	1.3	1.3
6	6.0	5.2	1.0	3.1	4.3	0.0	1.2	1.3
7	2.0	5.9	5.1	1.0	3.1	4.3	0.0	1.1
8	8.0	2.0	5.9	5.1	1.0	3.1	4.3	0.0
K-5	14.0	10.5	10.6	9.1	6.2	7.6	7.9	7.9
6-8	16.0	13.1	12.0	9.2	8.4	7.4	5.5	2.4
K-8	30.0	23.6	22.6	18.3	14.6	15.0	13.4	10.3

Study Area 82 Projection Date 10/3/2018

	CURRENT	PROJECTED RESIDENT STUDENTS						
	2018	2019	2020	2021	2022	2023	2024	2025
K	3.0	3.5	3.4	4.5	3.3	3.7	3.7	3.7
1	2.0	2.9	3.4	3.3	4.4	3.3	3.6	3.6
2	3.0	2.2	3.2	3.7	3.6	4.8	3.6	3.9
3	1.0	3.1	2.3	3.3	3.9	3.8	5.0	3.7
4	2.0	1.0	3.2	2.3	3.4	4.0	3.9	5.1
5	3.0	2.0	1.0	3.1	2.3	3.4	3.9	3.8
6	5.0	3.1	2.0	1.0	3.2	2.4	3.5	4.0
7	2.0	4.9	3.1	2.0	1.0	3.2	2.3	3.4
8	0.0	2.0	4.9	3.1	2.0	1.0	3.2	2.3
K-5	14.0	14.7	16.5	20.2	20.9	23.0	23.7	23.8
6-8	7.0	10.0	10.0	6.1	6.2	6.6	9.0	9.7
K-8	21.0	24.7	26.5	26.3	27.1	29.6	32.7	33.5

**Los Gatos USD****2018/19 Forecast Report**

Study Area 83 Projection Date 10/3/2018

	CURRENT	PROJECTED RESIDENT STUDENTS						
	2018	2019	2020	2021	2022	2023	2024	2025
K	5.0	5.8	5.7	7.5	5.5	6.1	6.1	6.1
1	1.0	4.9	5.7	5.5	7.3	5.4	6.0	6.0
2	2.0	1.1	5.3	6.2	6.0	8.0	5.9	6.5
3	1.0	2.1	1.1	5.6	6.5	6.3	8.3	6.2
4	7.0	1.0	2.1	1.2	5.7	6.7	6.5	8.5
5	3.0	6.9	1.0	2.1	1.1	5.6	6.5	6.3
6	3.0	3.1	7.1	1.0	2.2	1.2	5.8	6.7
7	6.0	3.0	3.1	7.0	1.0	2.1	1.2	5.7
8	3.0	6.0	3.0	3.1	7.0	1.0	2.1	1.2
K-5	19.0	21.8	20.9	28.1	32.1	38.1	39.3	39.6
6-8	12.0	12.1	13.2	11.1	10.2	4.3	9.1	13.6
K-8	31.0	33.9	34.1	39.2	42.3	42.4	48.4	53.2

Study Area 84 Projection Date 10/3/2018

	CURRENT	PROJECTED RESIDENT STUDENTS						
	2018	2019	2020	2021	2022	2023	2024	2025
K	1.0	1.0	0.9	1.1	1.0	1.0	1.0	1.0
1	1.0	1.0	1.0	0.9	1.1	1.0	1.0	1.0
2	2.0	1.0	1.0	1.1	1.0	1.2	1.1	1.1
3	1.0	2.1	1.1	1.1	1.1	1.0	1.2	1.1
4	4.0	1.0	2.2	1.2	1.2	1.2	1.1	1.3
5	5.0	4.0	1.0	2.2	1.2	1.2	1.2	1.1
6	3.0	5.3	4.3	1.1	2.4	1.3	1.3	1.3
7	3.0	3.0	5.4	4.3	1.1	2.4	1.3	1.3
8	2.0	3.2	3.2	5.7	4.5	1.2	2.5	1.3
K-5	14.0	10.1	7.2	7.6	6.6	6.6	6.6	6.6
6-8	8.0	11.5	12.9	11.1	8.0	4.9	5.1	3.9
K-8	22.0	21.6	20.1	18.7	14.6	11.5	11.7	10.5

**Los Gatos USD****2018/19 Forecast Report**

Study Area 85A Projection Date 10/3/2018

	CURRENT	PROJECTED RESIDENT STUDENTS						
	2018	2019	2020	2021	2022	2023	2024	2025
K	1.0	1.0	0.9	1.1	1.0	1.0	1.0	1.0
1	1.0	1.0	1.0	0.9	1.1	1.0	1.0	1.0
2	2.0	1.0	1.0	1.1	1.0	1.2	1.1	1.1
3	1.0	2.1	1.1	1.1	1.1	1.0	1.2	1.1
4	2.0	1.0	2.2	1.2	1.2	1.2	1.1	1.3
5	1.0	2.0	1.0	2.2	1.2	1.2	1.2	1.1
6	2.0	1.1	2.1	1.1	2.4	1.3	1.3	1.3
7	7.0	2.0	1.1	2.2	1.1	2.4	1.3	1.3
8	4.0	7.3	2.1	1.1	2.3	1.2	2.5	1.3
K-5	8.0	8.1	7.2	7.6	6.6	6.6	6.6	6.6
6-8	13.0	10.4	5.3	4.4	5.8	4.9	5.1	3.9
K-8	21.0	18.5	12.5	12.0	12.4	11.5	11.7	10.5

Study Area 85B Projection Date 10/3/2018

	CURRENT	PROJECTED RESIDENT STUDENTS						
	2018	2019	2020	2021	2022	2023	2024	2025
K	2.0	2.1	1.9	2.2	2.1	2.0	2.0	2.0
1	2.0	2.0	2.1	1.9	2.2	2.1	2.0	2.0
2	0.0	2.1	2.1	2.2	2.0	2.3	2.2	2.2
3	1.0	0.0	2.2	2.2	2.3	2.1	2.5	2.3
4	0.0	1.0	0.0	2.3	2.3	2.4	2.2	2.6
5	2.0	0.0	1.0	0.0	2.3	2.3	2.4	2.2
6	0.0	2.1	0.0	1.1	0.0	2.5	2.5	2.6
7	3.0	0.0	2.2	0.0	1.1	0.0	2.5	2.5
8	3.0	3.2	0.0	2.3	0.0	1.2	0.0	2.7
K-5	7.0	7.2	9.3	10.8	13.2	13.2	13.3	13.3
6-8	6.0	5.3	2.2	3.4	1.1	3.7	5.0	7.8
K-8	13.0	12.5	11.5	14.2	14.3	16.9	18.3	21.1

**Los Gatos USD****2018/19 Forecast Report**

Study Area 86 Projection Date 10/3/2018

	CURRENT	PROJECTED RESIDENT STUDENTS						
	2018	2019	2020	2021	2022	2023	2024	2025
K	2.0	2.1	1.9	2.2	2.1	2.0	2.0	2.0
1	0.0	2.1	2.2	2.0	2.4	2.2	2.2	2.2
2	0.0	0.0	2.1	2.2	2.0	2.4	2.2	2.2
3	2.0	0.0	0.0	2.2	2.3	2.1	2.4	2.3
4	2.0	2.1	0.0	0.0	2.3	2.4	2.2	2.6
5	3.0	2.0	2.1	0.0	0.0	2.4	2.4	2.2
6	4.0	3.2	2.2	2.3	0.0	0.0	2.5	2.6
7	4.0	4.0	3.2	2.2	2.3	0.0	0.0	2.5
8	2.0	4.1	4.1	3.3	2.2	2.3	0.0	0.0
K-5	9.0	8.3	8.3	8.6	11.1	13.5	13.4	13.5
6-8	10.0	11.3	9.5	7.8	4.5	2.3	2.5	5.1
K-8	19.0	19.6	17.8	16.4	15.6	15.8	15.9	18.6

Study Area 87 Projection Date 10/3/2018

	CURRENT	PROJECTED RESIDENT STUDENTS						
	2018	2019	2020	2021	2022	2023	2024	2025
K	1.0	1.0	0.9	1.1	1.0	1.0	1.0	1.0
1	3.0	1.1	1.1	1.0	1.2	1.1	1.1	1.1
2	2.0	3.0	1.1	1.1	1.0	1.2	1.1	1.1
3	1.0	2.1	3.1	1.1	1.1	1.0	1.2	1.1
4	2.0	1.0	2.2	3.2	1.2	1.2	1.1	1.3
5	3.0	2.0	1.1	2.2	3.3	1.2	1.2	1.1
6	3.0	3.2	2.2	1.1	2.3	3.5	1.3	1.3
7	0.0	3.0	3.2	2.2	1.1	2.3	3.5	1.3
8	2.0	0.0	3.1	3.3	2.2	1.2	2.4	3.6
K-5	12.0	10.2	9.5	9.7	8.8	6.7	6.7	6.7
6-8	5.0	6.2	8.5	6.6	5.6	7.0	7.2	6.2
K-8	17.0	16.4	18.0	16.3	14.4	13.7	13.9	12.9

**Los Gatos USD****2018/19 Forecast Report**

Study Area 88 Projection Date 10/3/2018

	CURRENT	PROJECTED RESIDENT STUDENTS						
	2018	2019	2020	2021	2022	2023	2024	2025
K	1.0	1.0	0.9	1.1	1.0	1.0	1.0	1.0
1	0.0	1.1	1.1	1.0	1.2	1.1	1.1	1.1
2	4.0	0.0	1.1	1.1	1.0	1.2	1.1	1.1
3	2.0	4.1	0.0	1.1	1.1	1.0	1.2	1.1
4	3.0	2.1	4.3	0.0	1.2	1.2	1.1	1.3
5	2.0	3.1	2.1	4.4	0.0	1.2	1.2	1.1
6	4.0	2.1	3.2	2.3	4.7	0.0	1.3	1.3
7	6.0	4.0	2.1	3.2	2.3	4.7	0.0	1.3
8	8.0	6.2	4.1	2.2	3.3	2.3	4.8	0.0
K-5	12.0	11.4	9.5	8.7	5.5	6.7	6.7	6.7
6-8	18.0	12.3	9.4	7.7	10.3	7.0	6.1	2.6
K-8	30.0	23.7	18.9	16.4	15.8	13.7	12.8	9.3

Study Area 89 Projection Date 10/3/2018

	CURRENT	PROJECTED RESIDENT STUDENTS						
	2018	2019	2020	2021	2022	2023	2024	2025
K	1.0	1.2	1.1	1.5	1.1	1.2	1.2	1.2
1	0.0	1.0	1.1	1.1	1.5	1.1	1.2	1.2
2	0.0	0.0	1.1	1.2	1.2	1.6	1.2	1.3
3	2.0	0.0	0.0	1.1	1.3	1.3	1.7	1.2
4	0.0	2.1	0.0	0.0	1.1	1.3	1.3	1.7
5	1.0	0.0	2.0	0.0	0.0	1.1	1.3	1.3
6	4.0	1.0	0.0	2.1	0.0	0.0	1.2	1.3
7	3.0	4.0	1.0	0.0	2.1	0.0	0.0	1.1
8	2.0	3.0	4.0	1.0	0.0	2.1	0.0	0.0
K-5	4.0	4.3	5.3	4.9	6.2	7.6	7.9	7.9
6-8	9.0	8.0	5.0	3.1	2.1	2.1	1.2	2.4
K-8	13.0	12.3	10.3	8.0	8.3	9.7	9.1	10.3



**Los Gatos USD****2018/19 Forecast Report**

Study Area 90 Projection Date 10/3/2018

	CURRENT	PROJECTED RESIDENT STUDENTS						
	2018	2019	2020	2021	2022	2023	2024	2025
K	13.0	13.3	12.2	14.4	13.3	13.3	13.3	13.3
1	9.0	13.0	13.3	12.2	14.4	13.3	13.3	13.3
2	4.0	9.4	13.6	14.0	12.8	15.1	14.0	14.0
3	16.0	4.2	10.0	14.5	14.8	13.6	16.0	14.8
4	19.0	16.8	4.5	10.5	15.2	15.6	14.2	16.8
5	13.0	19.0	16.8	4.5	10.5	15.2	15.6	14.2
6	17.0	13.9	20.3	18.0	4.8	11.3	16.3	16.7
7	12.0	17.2	14.0	20.5	18.2	4.8	11.4	16.4
8	16.0	12.6	18.0	14.8	21.6	19.1	5.1	11.9
K-5	74.0	75.7	70.4	70.1	81.0	86.1	86.4	86.4
6-8	45.0	43.7	52.3	53.3	44.6	35.2	32.8	45.0
K-8	119.0	119.4	122.7	123.4	125.6	121.3	119.2	131.4

Study Area 91 Projection Date 10/3/2018

	CURRENT	PROJECTED RESIDENT STUDENTS						
	2018	2019	2020	2021	2022	2023	2024	2025
K	3.0	3.1	2.8	3.3	3.1	3.1	3.1	3.1
1	5.0	3.2	3.3	3.0	3.6	3.3	3.3	3.3
2	3.0	5.0	3.2	3.3	3.0	3.6	3.3	3.3
3	11.0	3.1	5.2	3.3	3.4	3.1	3.7	3.4
4	4.0	11.6	3.2	5.4	3.5	3.6	3.3	3.8
5	4.0	4.1	11.8	3.3	5.5	3.5	3.6	3.3
6	8.0	4.2	4.3	12.5	3.5	5.8	3.8	3.9
7	11.0	8.0	4.2	4.3	12.5	3.5	5.8	3.8
8	5.0	11.3	8.2	4.4	4.5	12.9	3.6	6.0
K-5	30.0	30.1	29.5	21.6	22.1	20.2	20.3	20.2
6-8	24.0	23.5	16.7	21.2	20.5	22.2	13.2	13.7
K-8	54.0	53.6	46.2	42.8	42.6	42.4	33.5	33.9

**Los Gatos USD****2018/19 Forecast Report**

Study Area 92 Projection Date 10/3/2018

	CURRENT	PROJECTED RESIDENT STUDENTS						
	2018	2019	2020	2021	2022	2023	2024	2025
K	1.0	1.0	0.9	1.1	1.0	1.0	1.0	1.0
1	2.0	1.1	1.1	1.0	1.2	1.1	1.1	1.1
2	2.0	2.0	1.1	1.1	1.0	1.2	1.1	1.1
3	3.0	2.1	2.1	1.1	1.1	1.0	1.2	1.1
4	3.0	3.2	2.2	2.2	1.2	1.2	1.1	1.3
5	4.0	3.1	3.2	2.2	2.2	1.2	1.2	1.1
6	5.0	4.2	3.2	3.4	2.3	2.3	1.3	1.3
7	5.0	5.0	4.2	3.2	3.4	2.3	2.3	1.3
8	4.0	5.2	5.2	4.4	3.3	3.5	2.4	2.4
K-5	15.0	12.5	10.6	8.7	7.7	6.7	6.7	6.7
6-8	14.0	14.4	12.6	11.0	9.0	8.1	6.0	5.0
K-8	29.0	26.9	23.2	19.7	16.7	14.8	12.7	11.7

Study Area 93 Projection Date 10/3/2018

	CURRENT	PROJECTED RESIDENT STUDENTS						
	2018	2019	2020	2021	2022	2023	2024	2025
K	4.0	4.1	3.7	4.4	4.1	4.1	4.1	4.1
1	3.0	4.3	4.4	4.0	4.7	4.4	4.4	4.4
2	3.0	3.0	4.3	4.4	4.0	4.7	4.4	4.4
3	4.0	3.1	3.1	4.4	4.5	4.1	4.9	4.5
4	6.0	4.2	3.2	3.2	4.6	4.7	4.3	5.1
5	1.0	6.1	4.3	3.3	3.3	4.7	4.8	4.4
6	5.0	1.1	6.5	4.5	3.5	3.5	5.0	5.1
7	5.0	5.0	1.1	6.5	4.5	3.5	3.5	5.0
8	6.0	5.2	5.2	1.1	6.7	4.7	3.6	3.6
K-5	21.0	24.8	23.0	23.7	25.2	26.7	26.9	26.9
6-8	16.0	11.3	12.8	12.1	14.7	11.7	12.1	13.7
K-8	37.0	36.1	35.8	35.8	39.9	38.4	39.0	40.6

**Los Gatos USD****2018/19 Forecast Report**

Study Area 96 Projection Date 10/3/2018

	CURRENT	PROJECTED RESIDENT STUDENTS						
	2018	2019	2020	2021	2022	2023	2024	2025
K	0.0	0.0	0.0	0.0	0.0	0.0	0.0	0.0
1	2.0	0.0	0.0	0.0	0.0	0.0	0.0	0.0
2	1.0	2.2	0.0	0.0	0.0	0.0	0.0	0.0
3	2.0	1.0	2.3	0.0	0.0	0.0	0.0	0.0
4	4.0	2.1	1.1	2.3	0.0	0.0	0.0	0.0
5	1.0	3.9	2.0	1.0	2.3	0.0	0.0	0.0
6	2.0	1.0	4.0	2.1	1.1	2.4	0.0	0.0
7	2.0	2.0	1.0	4.0	2.1	1.1	2.3	0.0
8	4.0	2.0	2.0	1.0	4.0	2.1	1.1	2.3
K-5	10.0	9.2	5.4	3.3	2.3	0.0	0.0	0.0
6-8	8.0	5.0	7.0	7.1	7.2	5.6	3.4	2.3
K-8	18.0	14.2	12.4	10.4	9.5	5.6	3.4	2.3

Study Area 97 Projection Date 10/3/2018

	CURRENT	PROJECTED RESIDENT STUDENTS						
	2018	2019	2020	2021	2022	2023	2024	2025
K	1.0	1.0	0.9	1.1	1.0	1.0	1.0	1.0
1	2.0	1.1	1.1	1.0	1.2	1.1	1.1	1.1
2	1.0	2.0	1.1	1.1	1.0	1.2	1.1	1.1
3	4.0	1.0	2.1	1.1	1.1	1.0	1.2	1.1
4	2.0	4.2	1.1	2.2	1.2	1.2	1.1	1.3
5	2.0	2.0	4.3	1.1	2.2	1.2	1.2	1.1
6	3.0	2.1	2.2	4.5	1.2	2.3	1.3	1.3
7	5.0	3.0	2.1	2.2	4.5	1.2	2.3	1.3
8	0.0	5.2	3.1	2.2	2.2	4.7	1.2	2.4
K-5	12.0	11.3	10.6	7.6	7.7	6.7	6.7	6.7
6-8	8.0	10.3	7.4	8.9	7.9	8.2	4.8	5.0
K-8	20.0	21.6	18.0	16.5	15.6	14.9	11.5	11.7

**Los Gatos USD****2018/19 Forecast Report**

Study Area 98A Projection Date 10/3/2018

	CURRENT	PROJECTED RESIDENT STUDENTS						
	2018	2019	2020	2021	2022	2023	2024	2025
K	2.0	2.1	1.9	2.2	2.1	2.0	2.0	2.0
1	3.0	2.1	2.2	2.0	2.4	2.2	2.2	2.2
2	8.0	3.0	2.1	2.2	2.0	2.4	2.2	2.2
3	3.0	8.2	3.1	2.2	2.3	2.1	2.4	2.3
4	7.0	3.2	8.7	3.2	2.3	2.4	2.2	2.6
5	6.0	7.1	3.2	8.8	3.3	2.4	2.4	2.2
6	3.0	6.4	7.6	3.4	9.4	3.5	2.5	2.6
7	3.0	3.0	6.4	7.6	3.4	9.4	3.5	2.5
8	4.0	3.1	3.1	6.6	7.8	3.5	9.6	3.6
K-5	29.0	25.7	21.2	20.6	14.4	13.5	13.4	13.5
6-8	10.0	12.5	17.1	17.6	20.6	16.4	15.6	8.7
K-8	39.0	38.2	38.3	38.2	35.0	29.9	29.0	22.2

Study Area 98B Projection Date 10/3/2018

	CURRENT	PROJECTED RESIDENT STUDENTS						
	2018	2019	2020	2021	2022	2023	2024	2025
K	7.0	7.2	6.6	7.8	7.2	7.2	7.2	7.2
1	1.0	7.5	7.7	7.0	8.3	7.7	7.7	7.7
2	3.0	1.0	7.5	7.7	7.0	8.3	7.7	7.7
3	2.0	3.1	1.0	7.7	7.9	7.2	8.5	7.9
4	4.0	2.1	3.2	1.1	8.1	8.3	7.6	9.0
5	4.0	4.1	2.1	3.3	1.1	8.3	8.5	7.7
6	7.0	4.2	4.3	2.3	3.5	1.2	8.8	9.0
7	4.0	7.0	4.2	4.3	2.3	3.5	1.2	8.8
8	8.0	4.1	7.2	4.4	4.5	2.3	3.6	1.2
K-5	21.0	25.0	28.1	34.6	39.6	47.0	47.2	47.2
6-8	19.0	15.3	15.7	11.0	10.3	7.0	13.6	19.0
K-8	40.0	40.3	43.8	45.6	49.9	54.0	60.8	66.2

**Los Gatos USD****2018/19 Forecast Report**

Study Area 100A Projection Date 10/3/2018

	CURRENT	PROJECTED RESIDENT STUDENTS						
	2018	2019	2020	2021	2022	2023	2024	2025
K	0.0	0.0	0.0	0.0	0.0	0.0	0.0	0.0
1	0.0	0.0	0.0	0.0	0.0	0.0	0.0	0.0
2	1.0	0.0	0.0	0.0	0.0	0.0	0.0	0.0
3	0.0	1.0	0.0	0.0	0.0	0.0	0.0	0.0
4	1.0	0.0	1.1	0.0	0.0	0.0	0.0	0.0
5	0.0	1.0	0.0	1.0	0.0	0.0	0.0	0.0
6	0.0	0.0	1.0	0.0	1.1	0.0	0.0	0.0
7	2.0	0.0	0.0	1.0	0.0	1.1	0.0	0.0
8	2.0	2.0	0.0	0.0	1.0	0.0	1.1	0.0
K-5	2.0	2.0	1.1	1.0	0.0	0.0	0.0	0.0
6-8	4.0	2.0	1.0	1.0	2.1	1.1	1.1	0.0
K-8	6.0	4.0	2.1	2.0	2.1	1.1	1.1	0.0

Study Area 100B Projection Date 10/3/2018

	CURRENT	PROJECTED RESIDENT STUDENTS						
	2018	2019	2020	2021	2022	2023	2024	2025
K	2.0	2.3	2.3	3.0	2.2	2.4	2.4	2.4
1	0.0	2.0	2.3	2.2	2.9	2.2	2.4	2.4
2	3.0	0.0	2.1	2.5	2.4	3.2	2.4	2.6
3	1.0	3.1	0.0	2.2	2.6	2.5	3.3	2.5
4	4.0	1.0	3.2	0.0	2.3	2.7	2.6	3.4
5	2.0	3.9	1.0	3.1	0.0	2.2	2.6	2.5
6	1.0	2.1	4.0	1.0	3.2	0.0	2.3	2.7
7	1.0	1.0	2.0	4.0	1.0	3.2	0.0	2.3
8	1.0	1.0	1.0	2.0	4.0	1.0	3.2	0.0
K-5	12.0	12.3	10.9	13.0	12.4	15.2	15.7	15.8
6-8	3.0	4.1	7.0	7.0	8.2	4.2	5.5	5.0
K-8	15.0	16.4	17.9	20.0	20.6	19.4	21.2	20.8

**Los Gatos USD****2018/19 Forecast Report**

Study Area 100C Projection Date 10/3/2018

	CURRENT	PROJECTED RESIDENT STUDENTS						
	2018	2019	2020	2021	2022	2023	2024	2025
K	1.0	1.2	1.1	1.5	1.1	1.2	1.2	1.2
1	2.0	1.0	1.1	1.1	1.5	1.1	1.2	1.2
2	0.0	2.2	1.1	1.2	1.2	1.6	1.2	1.3
3	1.0	0.0	2.3	1.1	1.3	1.3	1.7	1.2
4	1.0	1.0	0.0	2.3	1.1	1.3	1.3	1.7
5	0.0	1.0	1.0	0.0	2.3	1.1	1.3	1.3
6	0.0	0.0	1.0	1.0	0.0	2.4	1.2	1.3
7	1.0	0.0	0.0	1.0	1.0	0.0	2.3	1.1
8	0.0	1.0	0.0	0.0	1.0	1.0	0.0	2.3
K-5	5.0	6.4	6.6	7.2	8.5	7.6	7.9	7.9
6-8	1.0	1.0	1.0	2.0	2.0	3.4	3.5	4.7
K-8	6.0	7.4	7.6	9.2	10.5	11.0	11.4	12.6

Study Area 101 Projection Date 10/3/2018

	CURRENT	PROJECTED RESIDENT STUDENTS						
	2018	2019	2020	2021	2022	2023	2024	2025
K	1.0	1.2	1.1	1.5	1.1	1.2	1.2	1.2
1	1.0	1.0	1.1	1.1	1.5	1.1	1.2	1.2
2	4.0	1.1	1.1	1.2	1.2	1.6	1.2	1.3
3	1.0	4.2	1.1	1.1	1.3	1.3	1.7	1.2
4	3.0	1.0	4.3	1.2	1.1	1.3	1.3	1.7
5	0.0	2.9	1.0	4.2	1.1	1.1	1.3	1.3
6	2.0	0.0	3.0	1.0	4.3	1.2	1.2	1.3
7	1.0	2.0	0.0	3.0	1.0	4.3	1.2	1.1
8	2.0	1.0	2.0	0.0	3.0	1.0	4.3	1.2
K-5	10.0	11.4	9.7	10.3	7.3	7.6	7.9	7.9
6-8	5.0	3.0	5.0	4.0	8.3	6.5	6.7	3.6
K-8	15.0	14.4	14.7	14.3	15.6	14.1	14.6	11.5



**Los Gatos USD****2018/19 Forecast Report**

Study Area 102A Projection Date 10/3/2018

	CURRENT	PROJECTED RESIDENT STUDENTS						
	2018	2019	2020	2021	2022	2023	2024	2025
K	1.0	1.2	1.1	1.5	1.1	1.2	1.2	1.2
1	3.0	1.0	1.1	1.1	1.5	1.1	1.2	1.2
2	4.0	3.3	1.1	1.2	1.2	1.6	1.2	1.3
3	4.0	4.2	3.4	1.1	1.3	1.3	1.7	1.2
4	1.0	4.1	4.3	3.5	1.1	1.3	1.3	1.7
5	1.0	1.0	4.0	4.2	3.4	1.1	1.3	1.3
6	3.0	1.0	1.0	4.2	4.3	3.5	1.2	1.3
7	6.0	3.0	1.0	1.0	4.1	4.3	3.5	1.1
8	9.0	6.0	3.0	1.0	1.0	4.1	4.3	3.5
K-5	14.0	14.8	15.0	12.6	9.6	7.6	7.9	7.9
6-8	18.0	10.0	5.0	6.2	9.4	11.9	9.0	5.9
K-8	32.0	24.8	20.0	18.8	19.0	19.5	16.9	13.8

Study Area 102B Projection Date 10/3/2018

	CURRENT	PROJECTED RESIDENT STUDENTS						
	2018	2019	2020	2021	2022	2023	2024	2025
K	0.0	0.0	0.0	0.0	0.0	0.0	0.0	0.0
1	0.0	0.0	0.0	0.0	0.0	0.0	0.0	0.0
2	0.0	0.0	0.0	0.0	0.0	0.0	0.0	0.0
3	1.0	0.0	0.0	0.0	0.0	0.0	0.0	0.0
4	0.0	1.0	0.0	0.0	0.0	0.0	0.0	0.0
5	0.0	0.0	1.0	0.0	0.0	0.0	0.0	0.0
6	0.0	0.0	0.0	1.0	0.0	0.0	0.0	0.0
7	0.0	0.0	0.0	0.0	1.0	0.0	0.0	0.0
8	0.0	0.0	0.0	0.0	0.0	1.0	0.0	0.0
K-5	1.0	1.0	1.0	0.0	0.0	0.0	0.0	0.0
6-8	0.0	0.0	0.0	1.0	1.0	1.0	0.0	0.0
K-8	1.0	1.0	1.0	1.0	1.0	1.0	0.0	0.0

**Los Gatos USD****2018/19 Forecast Report**

Study Area 102C Projection Date 10/3/2018

	CURRENT	PROJECTED RESIDENT STUDENTS						
	2018	2019	2020	2021	2022	2023	2024	2025
K	0.0	0.0	0.0	0.0	0.0	0.0	0.0	0.0
1	1.0	0.0	0.0	0.0	0.0	0.0	0.0	0.0
2	0.0	1.1	0.0	0.0	0.0	0.0	0.0	0.0
3	1.0	0.0	1.1	0.0	0.0	0.0	0.0	0.0
4	1.0	1.0	0.0	1.2	0.0	0.0	0.0	0.0
5	0.0	1.0	1.0	0.0	1.1	0.0	0.0	0.0
6	1.0	0.0	1.0	1.0	0.0	1.2	0.0	0.0
7	0.0	1.0	0.0	1.0	1.0	0.0	1.2	0.0
8	2.0	0.0	1.0	0.0	1.0	1.0	0.0	1.2
K-5	3.0	3.1	2.1	1.2	1.1	0.0	0.0	0.0
6-8	3.0	1.0	2.0	2.0	2.0	2.2	1.2	1.2
K-8	6.0	4.1	4.1	3.2	3.1	2.2	1.2	1.2

Study Area 102D Projection Date 10/3/2018

	CURRENT	PROJECTED RESIDENT STUDENTS						
	2018	2019	2020	2021	2022	2023	2024	2025
K	1.0	1.2	1.1	1.5	1.1	1.2	1.2	1.2
1	1.0	1.0	1.1	1.1	1.5	1.1	1.2	1.2
2	0.0	1.1	1.1	1.2	1.2	1.6	1.2	1.3
3	0.0	0.0	1.1	1.1	1.3	1.3	1.7	1.2
4	1.0	0.0	0.0	1.2	1.1	1.3	1.3	1.7
5	2.0	1.0	0.0	0.0	1.1	1.1	1.3	1.3
6	0.0	2.1	1.0	0.0	0.0	1.2	1.2	1.3
7	1.0	0.0	2.0	1.0	0.0	0.0	1.2	1.1
8	1.0	1.0	0.0	2.0	1.0	0.0	0.0	1.2
K-5	5.0	4.3	4.4	6.1	7.3	7.6	7.9	7.9
6-8	2.0	3.1	3.0	3.0	1.0	1.2	2.4	3.6
K-8	7.0	7.4	7.4	9.1	8.3	8.8	10.3	11.5

**Los Gatos USD****2018/19 Forecast Report**

Study Area 103 Projection Date 10/3/2018

	CURRENT	PROJECTED RESIDENT STUDENTS						
	2018	2019	2020	2021	2022	2023	2024	2025
K	5.0	5.1	4.7	5.5	5.1	5.1	5.1	5.1
1	6.0	4.9	5.0	4.6	5.4	5.0	5.0	5.0
2	6.0	6.5	5.3	5.5	5.0	5.9	5.5	5.5
3	7.0	6.2	6.8	5.6	5.7	5.2	6.2	5.7
4	6.0	7.2	6.4	7.0	5.7	5.9	5.4	6.3
5	3.0	5.9	7.1	6.3	6.9	5.6	5.8	5.3
6	6.0	3.1	6.1	7.3	6.5	7.1	5.8	5.9
7	5.0	5.9	3.1	6.0	7.2	6.4	7.0	5.7
8	4.0	5.0	5.9	3.1	6.0	7.2	6.4	7.0
K-5	33.0	35.8	35.3	34.5	33.8	32.7	33.0	32.9
6-8	15.0	14.0	15.1	16.4	19.7	20.7	19.2	18.6
K-8	48.0	49.8	50.4	50.9	53.5	53.4	52.2	51.5

Study Area 103A Projection Date 10/3/2018

	CURRENT	PROJECTED RESIDENT STUDENTS						
	2018	2019	2020	2021	2022	2023	2024	2025
K	3.0	3.1	2.8	3.3	3.1	3.1	3.1	3.1
1	2.0	3.0	3.1	2.8	3.3	3.1	3.1	3.1
2	1.0	2.1	3.2	3.2	3.0	3.5	3.2	3.2
3	1.0	1.1	2.2	3.3	3.4	3.1	3.7	3.4
4	0.0	1.0	1.1	2.3	3.5	3.6	3.3	3.9
5	2.0	0.0	1.0	1.1	2.3	3.5	3.6	3.3
6	2.0	2.1	0.0	1.1	1.2	2.5	3.8	3.8
7	1.0	2.0	2.2	0.0	1.1	1.2	2.5	3.8
8	1.0	1.0	2.1	2.3	0.0	1.2	1.3	2.7
K-5	9.0	10.3	13.4	16.0	18.6	19.9	20.0	20.0
6-8	4.0	5.1	4.3	3.4	2.3	4.9	7.6	10.3
K-8	13.0	15.4	17.7	19.4	20.9	24.8	27.6	30.3

**Los Gatos USD****2018/19 Forecast Report**

Study Area 104 Projection Date 10/3/2018

	CURRENT	PROJECTED RESIDENT STUDENTS						
	2018	2019	2020	2021	2022	2023	2024	2025
K	3.0	3.1	2.8	3.3	3.1	3.1	3.1	3.1
1	5.0	3.0	3.1	2.8	3.3	3.1	3.1	3.1
2	3.0	5.2	3.2	3.2	3.0	3.5	3.2	3.2
3	5.0	3.2	5.6	3.3	3.4	3.1	3.7	3.4
4	7.0	5.2	3.3	5.8	3.5	3.6	3.3	3.9
5	5.0	7.0	5.2	3.3	5.8	3.5	3.6	3.3
6	12.0	5.3	7.5	5.6	3.6	6.3	3.8	3.8
7	9.0	12.1	5.4	7.6	5.7	3.6	6.3	3.8
8	15.0	9.4	12.7	5.7	7.9	6.0	3.8	6.6
K-5	28.0	26.7	23.2	21.7	22.1	19.9	20.0	20.0
6-8	36.0	26.8	25.6	18.9	17.2	15.9	13.9	14.2
K-8	64.0	53.5	48.8	40.6	39.3	35.8	33.9	34.2

Study Area 105A Projection Date 10/3/2018

	CURRENT	PROJECTED RESIDENT STUDENTS						
	2018	2019	2020	2021	2022	2023	2024	2025
K	1.0	1.0	0.9	1.1	1.0	1.0	1.0	1.0
1	0.0	1.1	1.1	1.0	1.2	1.1	1.1	1.1
2	0.0	0.0	1.1	1.1	1.0	1.2	1.1	1.1
3	0.0	0.0	0.0	1.1	1.1	1.0	1.2	1.1
4	0.0	0.0	0.0	0.0	1.2	1.2	1.1	1.3
5	0.0	0.0	0.0	0.0	0.0	1.2	1.2	1.1
6	0.0	0.0	0.0	0.0	0.0	0.0	1.3	1.3
7	0.0	0.0	0.0	0.0	0.0	0.0	0.0	1.3
8	0.0	0.0	0.0	0.0	0.0	0.0	0.0	0.0
K-5	1.0	2.1	3.1	4.3	5.5	6.7	6.7	6.7
6-8	0.0	0.0	0.0	0.0	0.0	0.0	1.3	2.6
K-8	1.0	2.1	3.1	4.3	5.5	6.7	8.0	9.3

**Los Gatos USD****2018/19 Forecast Report**

Study Area 105B Projection Date 10/3/2018

	CURRENT	PROJECTED RESIDENT STUDENTS						
	2018	2019	2020	2021	2022	2023	2024	2025
K	9.0	9.2	8.4	10.0	9.2	9.2	9.2	9.2
1	2.0	9.6	9.9	9.0	10.7	9.9	9.9	9.9
2	2.0	2.0	9.6	9.9	9.0	10.7	9.9	9.9
3	1.0	2.1	2.1	9.9	10.2	9.3	11.0	10.2
4	8.0	1.0	2.2	2.2	10.4	10.7	9.8	11.5
5	6.0	8.2	1.1	2.2	2.2	10.6	10.9	10.0
6	7.0	6.4	8.6	1.1	2.3	2.3	11.3	11.6
7	6.0	7.0	6.4	8.6	1.1	2.3	2.3	11.3
8	6.0	6.2	7.2	6.6	8.9	1.2	2.4	2.4
K-5	28.0	32.1	33.3	43.2	51.7	60.4	60.7	60.7
6-8	19.0	19.6	22.2	16.3	12.3	5.8	16.0	25.3
K-8	47.0	51.7	55.5	59.5	64.0	66.2	76.7	86.0

Study Area 106 Projection Date 10/3/2018

	CURRENT	PROJECTED RESIDENT STUDENTS						
	2018	2019	2020	2021	2022	2023	2024	2025
K	4.0	4.1	3.7	4.4	4.1	4.1	4.1	4.1
1	7.0	4.3	4.4	4.0	4.7	4.4	4.4	4.4
2	3.0	7.0	4.3	4.4	4.0	4.7	4.4	4.4
3	6.0	3.1	7.2	4.4	4.5	4.1	4.9	4.5
4	6.0	6.3	3.2	7.6	4.6	4.7	4.3	5.1
5	6.0	6.1	6.4	3.3	7.7	4.7	4.8	4.4
6	4.0	6.4	6.5	6.8	3.5	8.2	5.0	5.1
7	6.0	4.0	6.4	6.5	6.8	3.5	8.2	5.0
8	1.0	6.2	4.1	6.6	6.7	7.0	3.6	8.4
K-5	32.0	30.9	29.2	28.1	29.6	26.7	26.9	26.9
6-8	11.0	16.6	17.0	19.9	17.0	18.7	16.8	18.5
K-8	43.0	47.5	46.2	48.0	46.6	45.4	43.7	45.4

**Los Gatos USD****2018/19 Forecast Report**

Study Area 107 Projection Date 10/3/2018

	CURRENT	PROJECTED RESIDENT STUDENTS						
	2018	2019	2020	2021	2022	2023	2024	2025
K	2.0	2.1	1.9	2.2	2.1	2.0	2.0	2.0
1	4.0	2.1	2.2	2.0	2.4	2.2	2.2	2.2
2	4.0	4.0	2.1	2.2	2.0	2.4	2.2	2.2
3	1.0	4.1	4.1	2.2	2.3	2.1	2.4	2.3
4	2.0	1.0	4.3	4.3	2.3	2.4	2.2	2.6
5	1.0	2.0	1.1	4.4	4.4	2.4	2.4	2.2
6	4.0	1.1	2.2	1.1	4.7	4.7	2.5	2.6
7	5.0	4.0	1.1	2.2	1.1	4.7	4.7	2.5
8	3.0	5.2	4.1	1.1	2.2	1.2	4.8	4.8
K-5	14.0	15.3	15.7	17.3	15.5	13.5	13.4	13.5
6-8	12.0	10.3	7.4	4.4	8.0	10.6	12.0	9.9
K-8	26.0	25.6	23.1	21.7	23.5	24.1	25.4	23.4

Study Area 108 Projection Date 10/3/2018

	CURRENT	PROJECTED RESIDENT STUDENTS						
	2018	2019	2020	2021	2022	2023	2024	2025
K	3.0	2.8	2.8	2.9	3.6	3.0	3.0	3.0
1	1.0	3.1	2.9	2.9	3.0	3.7	3.1	3.1
2	2.0	1.0	3.0	2.8	2.8	2.9	3.6	3.0
3	2.0	2.0	1.0	3.1	2.9	2.9	3.0	3.7
4	4.0	2.1	2.2	1.1	3.3	3.1	3.1	3.1
5	8.0	4.2	2.2	2.3	1.1	3.4	3.2	3.2
6	7.0	8.3	4.4	2.3	2.4	1.2	3.6	3.3
7	4.0	7.4	8.8	4.6	2.5	2.5	1.2	3.8
8	6.0	3.7	6.9	8.2	4.3	2.3	2.3	1.1
K-5	20.0	15.2	14.1	15.1	16.7	19.0	19.0	19.1
6-8	17.0	19.4	20.1	15.1	9.2	6.0	7.1	8.2
K-8	37.0	34.6	34.2	30.2	25.9	25.0	26.1	27.3



**Los Gatos USD****2018/19 Forecast Report**

Study Area 109 Projection Date 10/3/2018

	CURRENT	PROJECTED RESIDENT STUDENTS						
	2018	2019	2020	2021	2022	2023	2024	2025
K	3.0	3.5	3.4	4.5	3.3	3.7	3.7	3.7
1	2.0	2.9	3.4	3.3	4.4	3.3	3.6	3.6
2	3.0	2.2	3.2	3.7	3.6	4.8	3.6	3.9
3	5.0	3.1	2.3	3.3	3.9	3.8	5.0	3.7
4	3.0	5.2	3.2	2.3	3.4	4.0	3.9	5.1
5	11.0	2.9	5.0	3.1	2.3	3.4	3.9	3.8
6	3.0	11.3	3.0	5.2	3.2	2.4	3.5	4.0
7	5.0	3.0	11.2	3.0	5.1	3.2	2.3	3.4
8	6.0	5.0	3.0	11.2	3.0	5.1	3.2	2.3
K-5	27.0	19.8	20.5	20.2	20.9	23.0	23.7	23.8
6-8	14.0	19.3	17.2	19.4	11.3	10.7	9.0	9.7
K-8	41.0	39.1	37.7	39.6	32.2	33.7	32.7	33.5

Study Area 110 Projection Date 10/3/2018

	CURRENT	PROJECTED RESIDENT STUDENTS						
	2018	2019	2020	2021	2022	2023	2024	2025
K	1.0	1.2	1.1	1.5	1.1	1.2	1.2	1.2
1	1.0	1.0	1.1	1.1	1.5	1.1	1.2	1.2
2	3.0	1.1	1.1	1.2	1.2	1.6	1.2	1.3
3	1.0	3.1	1.1	1.1	1.3	1.3	1.7	1.2
4	1.0	1.0	3.2	1.2	1.1	1.3	1.3	1.7
5	1.0	1.0	1.0	3.1	1.1	1.1	1.3	1.3
6	2.0	1.0	1.0	1.0	3.2	1.2	1.2	1.3
7	0.0	2.0	1.0	1.0	1.0	3.2	1.2	1.1
8	0.0	0.0	2.0	1.0	1.0	1.0	3.2	1.2
K-5	8.0	8.4	8.6	9.2	7.3	7.6	7.9	7.9
6-8	2.0	3.0	4.0	3.0	5.2	5.4	5.6	3.6
K-8	10.0	11.4	12.6	12.2	12.5	13.0	13.5	11.5

**Los Gatos USD****2018/19 Forecast Report**

Study Area 111A Projection Date 10/3/2018

	CURRENT	PROJECTED RESIDENT STUDENTS						
	2018	2019	2020	2021	2022	2023	2024	2025
K	2.0	2.3	2.3	3.0	2.2	2.4	2.4	2.4
1	2.0	2.0	2.3	2.2	2.9	2.2	2.4	2.4
2	1.0	2.2	2.1	2.5	2.4	3.2	2.4	2.6
3	2.0	1.0	2.3	2.2	2.6	2.5	3.3	2.5
4	4.0	2.1	1.1	2.3	2.3	2.7	2.6	3.4
5	1.0	3.9	2.0	1.0	2.3	2.2	2.6	2.5
6	0.0	1.0	4.0	2.1	1.1	2.4	2.3	2.7
7	3.0	0.0	1.0	4.0	2.1	1.1	2.3	2.3
8	3.0	3.0	0.0	1.0	4.0	2.1	1.1	2.3
K-5	12.0	13.5	12.1	13.2	14.7	15.2	15.7	15.8
6-8	6.0	4.0	5.0	7.1	7.2	5.6	5.7	7.3
K-8	18.0	17.5	17.1	20.3	21.9	20.8	21.4	23.1

Study Area 111B Projection Date 10/3/2018

	CURRENT	PROJECTED RESIDENT STUDENTS						
	2018	2019	2020	2021	2022	2023	2024	2025
K	0.0	0.0	0.0	0.0	0.0	0.0	0.0	0.0
1	1.0	0.0	0.0	0.0	0.0	0.0	0.0	0.0
2	0.0	1.1	0.0	0.0	0.0	0.0	0.0	0.0
3	1.0	0.0	1.1	0.0	0.0	0.0	0.0	0.0
4	0.0	1.0	0.0	1.2	0.0	0.0	0.0	0.0
5	1.0	0.0	1.0	0.0	1.1	0.0	0.0	0.0
6	1.0	1.0	0.0	1.0	0.0	1.2	0.0	0.0
7	0.0	1.0	1.0	0.0	1.0	0.0	1.2	0.0
8	0.0	0.0	1.0	1.0	0.0	1.0	0.0	1.2
K-5	3.0	2.1	2.1	1.2	1.1	0.0	0.0	0.0
6-8	1.0	2.0	2.0	2.0	1.0	2.2	1.2	1.2
K-8	4.0	4.1	4.1	3.2	2.1	2.2	1.2	1.2

**Los Gatos USD****2018/19 Forecast Report**

Study Area 112 Projection Date 10/3/2018

	CURRENT	PROJECTED RESIDENT STUDENTS						
	2018	2019	2020	2021	2022	2023	2024	2025
K	5.0	5.1	4.7	5.5	5.1	5.1	5.1	5.1
1	3.0	4.9	5.0	4.6	5.4	5.0	5.0	5.0
2	3.0	3.3	5.3	5.5	5.0	5.9	5.5	5.5
3	4.0	3.1	3.4	5.6	5.7	5.2	6.2	5.7
4	4.0	4.1	3.2	3.5	5.7	5.9	5.4	6.3
5	5.0	3.9	4.0	3.1	3.4	5.6	5.8	5.3
6	7.0	5.2	4.0	4.2	3.2	3.5	5.8	5.9
7	5.0	6.9	5.1	4.0	4.1	3.2	3.5	5.7
8	3.0	5.0	6.9	5.1	4.0	4.1	3.2	3.5
K-5	24.0	24.4	25.6	27.8	30.3	32.7	33.0	32.9
6-8	15.0	17.1	16.0	13.3	11.3	10.8	12.5	15.1
K-8	39.0	41.5	41.6	41.1	41.6	43.5	45.5	48.0

Study Area 113 Projection Date 10/3/2018

	CURRENT	PROJECTED RESIDENT STUDENTS						
	2018	2019	2020	2021	2022	2023	2024	2025
K	0.0	0.0	0.0	0.0	0.0	0.0	0.0	0.0
1	4.0	0.0	0.0	0.0	0.0	0.0	0.0	0.0
2	1.0	4.2	0.0	0.0	0.0	0.0	0.0	0.0
3	5.0	1.1	4.5	0.0	0.0	0.0	0.0	0.0
4	5.0	5.2	1.1	4.7	0.0	0.0	0.0	0.0
5	4.0	5.0	5.2	1.1	4.7	0.0	0.0	0.0
6	5.0	4.3	5.3	5.6	1.2	5.0	0.0	0.0
7	4.0	5.1	4.3	5.4	5.7	1.2	5.1	0.0
8	8.0	4.2	5.3	4.5	5.7	6.0	1.3	5.3
K-5	19.0	15.5	10.8	5.8	4.7	0.0	0.0	0.0
6-8	17.0	13.6	14.9	15.5	12.6	12.2	6.4	5.3
K-8	36.0	29.1	25.7	21.3	17.3	12.2	6.4	5.3

**Los Gatos USD****2018/19 Forecast Report**

Study Area 114 Projection Date 10/3/2018

	CURRENT	PROJECTED RESIDENT STUDENTS						
	2018	2019	2020	2021	2022	2023	2024	2025
K	1.0	1.0	0.9	1.1	1.0	1.0	1.0	1.0
1	1.0	1.0	1.0	0.9	1.1	1.0	1.0	1.0
2	4.0	1.0	1.0	1.1	1.0	1.2	1.1	1.1
3	4.0	4.2	1.1	1.1	1.1	1.0	1.2	1.1
4	1.0	4.2	4.5	1.2	1.2	1.2	1.1	1.3
5	2.0	1.0	4.2	4.5	1.2	1.2	1.2	1.1
6	1.0	2.1	1.1	4.5	4.8	1.3	1.3	1.3
7	0.0	1.0	2.2	1.1	4.5	4.8	1.3	1.3
8	2.0	0.0	1.1	2.3	1.1	4.8	5.1	1.3
K-5	13.0	12.4	12.7	9.9	6.6	6.6	6.6	6.6
6-8	3.0	3.1	4.4	7.9	10.4	10.9	7.7	3.9
K-8	16.0	15.5	17.1	17.8	17.0	17.5	14.3	10.5

Study Area 115A Projection Date 10/3/2018

	CURRENT	PROJECTED RESIDENT STUDENTS						
	2018	2019	2020	2021	2022	2023	2024	2025
K	0.0	0.0	0.0	0.0	0.0	0.0	0.0	0.0
1	1.0	0.0	0.0	0.0	0.0	0.0	0.0	0.0
2	0.0	1.0	0.0	0.0	0.0	0.0	0.0	0.0
3	0.0	0.0	1.1	0.0	0.0	0.0	0.0	0.0
4	0.0	0.0	0.0	1.2	0.0	0.0	0.0	0.0
5	1.0	0.0	0.0	0.0	1.2	0.0	0.0	0.0
6	0.0	1.1	0.0	0.0	0.0	1.3	0.0	0.0
7	3.0	0.0	1.1	0.0	0.0	0.0	1.3	0.0
8	1.0	3.2	0.0	1.1	0.0	0.0	0.0	1.3
K-5	2.0	1.0	1.1	1.2	1.2	0.0	0.0	0.0
6-8	4.0	4.3	1.1	1.1	0.0	1.3	1.3	1.3
K-8	6.0	5.3	2.2	2.3	1.2	1.3	1.3	1.3

**Los Gatos USD****2018/19 Forecast Report**

Study Area 115B Projection Date 10/3/2018

	CURRENT	PROJECTED RESIDENT STUDENTS						
	2018	2019	2020	2021	2022	2023	2024	2025
K	0.0	0.0	0.0	0.0	0.0	0.0	0.0	0.0
1	1.0	0.0	0.0	0.0	0.0	0.0	0.0	0.0
2	3.0	1.0	0.0	0.0	0.0	0.0	0.0	0.0
3	0.0	3.2	1.1	0.0	0.0	0.0	0.0	0.0
4	1.0	0.0	3.3	1.2	0.0	0.0	0.0	0.0
5	4.0	1.0	0.0	3.3	1.2	0.0	0.0	0.0
6	1.0	4.3	1.1	0.0	3.6	1.3	0.0	0.0
7	3.0	1.0	4.3	1.1	0.0	3.6	1.3	0.0
8	5.0	3.2	1.1	4.5	1.1	0.0	3.8	1.3
K-5	9.0	5.2	4.4	4.5	1.2	0.0	0.0	0.0
6-8	9.0	8.5	6.5	5.6	4.7	4.9	5.1	1.3
K-8	18.0	13.7	10.9	10.1	5.9	4.9	5.1	1.3

Study Area 116 Projection Date 10/3/2018

	CURRENT	PROJECTED RESIDENT STUDENTS						
	2018	2019	2020	2021	2022	2023	2024	2025
K	6.0	6.2	5.6	6.6	6.2	6.1	6.1	6.1
1	6.0	6.4	6.6	6.0	7.1	6.6	6.6	6.6
2	3.0	6.0	6.4	6.6	6.0	7.1	6.6	6.6
3	5.0	3.1	6.2	6.6	6.8	6.2	7.3	6.8
4	4.0	5.2	3.2	6.5	6.9	7.1	6.5	7.7
5	10.0	4.1	5.4	3.3	6.6	7.1	7.3	6.6
6	4.0	10.6	4.3	5.7	3.5	7.0	7.5	7.7
7	9.0	4.0	10.6	4.3	5.7	3.5	7.0	7.5
8	9.0	9.3	4.1	10.9	4.5	5.8	3.6	7.2
K-5	34.0	31.0	33.4	35.6	39.6	40.2	40.4	40.4
6-8	22.0	23.9	19.0	20.9	13.7	16.3	18.1	22.4
K-8	56.0	54.9	52.4	56.5	53.3	56.5	58.5	62.8

**Los Gatos USD****2018/19 Forecast Report**

Study Area 117A Projection Date 10/3/2018

	CURRENT	PROJECTED RESIDENT STUDENTS						
	2018	2019	2020	2021	2022	2023	2024	2025
K	1.0	1.0	0.9	1.1	1.0	1.0	1.0	1.0
1	1.0	1.1	1.1	1.0	1.2	1.1	1.1	1.1
2	4.0	1.0	1.1	1.1	1.0	1.2	1.1	1.1
3	1.0	4.1	1.0	1.1	1.1	1.0	1.2	1.1
4	4.0	1.0	4.3	1.1	1.2	1.2	1.1	1.3
5	4.0	4.1	1.1	4.4	1.1	1.2	1.2	1.1
6	2.0	4.2	4.3	1.1	4.7	1.2	1.3	1.3
7	4.0	2.0	4.2	4.3	1.1	4.7	1.2	1.3
8	7.0	4.1	2.1	4.4	4.5	1.2	4.8	1.2
K-5	15.0	12.3	9.5	9.8	6.6	6.7	6.7	6.7
6-8	13.0	10.3	10.6	9.8	10.3	7.1	7.3	3.8
K-8	28.0	22.6	20.1	19.6	16.9	13.8	14.0	10.5

Study Area 117B Projection Date 10/3/2018

	CURRENT	PROJECTED RESIDENT STUDENTS						
	2018	2019	2020	2021	2022	2023	2024	2025
K	1.0	1.0	0.9	1.1	1.0	1.0	1.0	1.0
1	2.0	1.1	1.1	1.0	1.2	1.1	1.1	1.1
2	1.0	2.0	1.1	1.1	1.0	1.2	1.1	1.1
3	3.0	1.0	2.1	1.1	1.1	1.0	1.2	1.1
4	2.0	3.2	1.1	2.2	1.2	1.2	1.1	1.3
5	1.0	2.0	3.2	1.1	2.2	1.2	1.2	1.1
6	4.0	1.1	2.2	3.4	1.2	2.3	1.3	1.3
7	0.0	4.0	1.1	2.2	3.4	1.2	2.3	1.3
8	3.0	0.0	4.1	1.1	2.2	3.5	1.2	2.4
K-5	10.0	10.3	9.5	7.6	7.7	6.7	6.7	6.7
6-8	7.0	5.1	7.4	6.7	6.8	7.0	4.8	5.0
K-8	17.0	15.4	16.9	14.3	14.5	13.7	11.5	11.7

**Los Gatos USD****2018/19 Forecast Report**

Study Area 118 Projection Date 10/3/2018

	CURRENT	PROJECTED RESIDENT STUDENTS						
	2018	2019	2020	2021	2022	2023	2024	2025
K	1.0	1.0	0.9	1.1	1.0	1.0	1.0	1.0
1	1.0	1.1	1.1	1.0	1.2	1.1	1.1	1.1
2	0.0	1.0	1.1	1.1	1.0	1.2	1.1	1.1
3	0.0	0.0	1.0	1.1	1.1	1.0	1.2	1.1
4	0.0	0.0	0.0	1.1	1.2	1.2	1.1	1.3
5	0.0	0.0	0.0	0.0	1.1	1.2	1.2	1.1
6	2.0	0.0	0.0	0.0	0.0	1.2	1.3	1.3
7	0.0	2.0	0.0	0.0	0.0	0.0	1.2	1.3
8	0.0	0.0	2.1	0.0	0.0	0.0	0.0	1.2
K-5	2.0	3.1	4.1	5.4	6.6	6.7	6.7	6.7
6-8	2.0	2.0	2.1	0.0	0.0	1.2	2.5	3.8
K-8	4.0	5.1	6.2	5.4	6.6	7.9	9.2	10.5

Study Area 119 Projection Date 10/3/2018

	CURRENT	PROJECTED RESIDENT STUDENTS						
	2018	2019	2020	2021	2022	2023	2024	2025
K	1.0	1.2	1.1	1.5	1.1	1.2	1.2	1.2
1	2.0	1.0	1.1	1.1	1.5	1.1	1.2	1.2
2	3.0	2.2	1.1	1.2	1.2	1.6	1.2	1.3
3	2.0	3.1	2.3	1.1	1.3	1.3	1.7	1.2
4	2.0	2.1	3.2	2.3	1.1	1.3	1.3	1.7
5	2.0	2.0	2.0	3.1	2.3	1.1	1.3	1.3
6	3.0	2.1	2.0	2.1	3.2	2.4	1.2	1.3
7	4.0	3.0	2.0	2.0	2.1	3.2	2.3	1.1
8	5.0	4.0	3.0	2.0	2.0	2.1	3.2	2.3
K-5	12.0	11.6	10.8	10.3	8.5	7.6	7.9	7.9
6-8	12.0	9.1	7.0	6.1	7.3	7.7	6.7	4.7
K-8	24.0	20.7	17.8	16.4	15.8	15.3	14.6	12.6



**Los Gatos USD****2018/19 Forecast Report**

Study Area 120A Projection Date 10/3/2018

	CURRENT	PROJECTED RESIDENT STUDENTS						
	2018	2019	2020	2021	2022	2023	2024	2025
K	0.0	0.0	0.0	0.0	0.0	0.0	0.0	0.0
1	0.0	0.0	0.0	0.0	0.0	0.0	0.0	0.0
2	2.0	0.0	0.0	0.0	0.0	0.0	0.0	0.0
3	2.0	2.1	0.0	0.0	0.0	0.0	0.0	0.0
4	1.0	2.1	2.1	0.0	0.0	0.0	0.0	0.0
5	1.0	1.0	2.0	2.1	0.0	0.0	0.0	0.0
6	1.0	1.0	1.0	2.1	2.2	0.0	0.0	0.0
7	3.0	1.0	1.0	1.0	2.1	2.1	0.0	0.0
8	3.0	3.0	1.0	1.0	1.0	2.1	2.1	0.0
K-5	6.0	5.2	4.1	2.1	0.0	0.0	0.0	0.0
6-8	7.0	5.0	3.0	4.1	5.3	4.2	2.1	0.0
K-8	13.0	10.2	7.1	6.2	5.3	4.2	2.1	0.0

Study Area 120B Projection Date 10/3/2018

	CURRENT	PROJECTED RESIDENT STUDENTS						
	2018	2019	2020	2021	2022	2023	2024	2025
K	0.0	0.0	0.0	0.0	0.0	0.0	0.0	0.0
1	0.0	0.0	0.0	0.0	0.0	0.0	0.0	0.0
2	0.0	0.0	0.0	0.0	0.0	0.0	0.0	0.0
3	0.0	0.0	0.0	0.0	0.0	0.0	0.0	0.0
4	0.0	0.0	0.0	0.0	0.0	0.0	0.0	0.0
5	0.0	0.0	0.0	0.0	0.0	0.0	0.0	0.0
6	0.0	0.0	0.0	0.0	0.0	0.0	0.0	0.0
7	0.0	0.0	0.0	0.0	0.0	0.0	0.0	0.0
8	0.0	0.0	0.0	0.0	0.0	0.0	0.0	0.0
K-5	0.0	0.0	0.0	0.0	0.0	0.0	0.0	0.0
6-8	0.0	0.0	0.0	0.0	0.0	0.0	0.0	0.0
K-8	0.0	0.0	0.0	0.0	0.0	0.0	0.0	0.0

**Los Gatos USD****2018/19 Forecast Report**

Study Area 121 Projection Date 10/3/2018

	CURRENT	PROJECTED RESIDENT STUDENTS						
	2018	2019	2020	2021	2022	2023	2024	2025
K	5.0	5.8	5.7	7.5	5.5	6.1	6.1	6.1
1	3.0	4.9	5.7	5.5	7.3	5.4	6.0	6.0
2	1.0	3.3	5.3	6.2	6.0	8.0	5.9	6.5
3	4.0	1.0	3.4	5.6	6.5	6.3	8.3	6.2
4	2.0	4.1	1.1	3.5	5.7	6.7	6.5	8.5
5	1.0	2.0	4.0	1.0	3.4	5.6	6.5	6.3
6	3.0	1.0	2.0	4.2	1.1	3.5	5.8	6.7
7	3.0	3.0	1.0	2.0	4.1	1.1	3.5	5.7
8	3.0	3.0	3.0	1.0	2.0	4.1	1.1	3.5
K-5	16.0	21.1	25.2	29.3	34.4	38.1	39.3	39.6
6-8	9.0	7.0	6.0	7.2	7.2	8.7	10.4	15.9
K-8	25.0	28.1	31.2	36.5	41.6	46.8	49.7	55.5

Study Area 122 Projection Date 10/3/2018

	CURRENT	PROJECTED RESIDENT STUDENTS						
	2018	2019	2020	2021	2022	2023	2024	2025
K	4.0	4.1	3.7	4.4	4.1	4.1	4.1	4.1
1	4.0	3.9	4.0	3.7	4.3	4.0	4.0	4.0
2	4.0	4.4	4.3	4.4	4.0	4.7	4.4	4.4
3	3.0	4.2	4.5	4.4	4.6	4.2	4.9	4.6
4	0.0	3.1	4.3	4.7	4.6	4.7	4.3	5.1
5	1.0	0.0	3.0	4.2	4.6	4.5	4.6	4.2
6	7.0	1.0	0.0	3.1	4.3	4.7	4.6	4.7
7	6.0	6.9	1.0	0.0	3.1	4.3	4.7	4.6
8	4.0	6.0	6.9	1.0	0.0	3.1	4.3	4.7
K-5	16.0	19.7	23.8	25.8	26.2	26.2	26.3	26.4
6-8	17.0	13.9	7.9	4.1	7.4	12.1	13.6	14.0
K-8	33.0	33.6	31.7	29.9	33.6	38.3	39.9	40.4

**Los Gatos USD****2018/19 Forecast Report**

Study Area 123 Projection Date 10/3/2018

	CURRENT	PROJECTED RESIDENT STUDENTS						
	2018	2019	2020	2021	2022	2023	2024	2025
K	1.0	1.0	0.9	1.1	1.0	1.0	1.0	1.0
1	5.0	1.0	1.0	0.9	1.1	1.0	1.0	1.0
2	2.0	5.2	1.0	1.1	1.0	1.2	1.1	1.1
3	2.0	2.1	5.6	1.1	1.1	1.0	1.2	1.1
4	5.0	2.1	2.2	5.8	1.2	1.2	1.1	1.3
5	5.0	5.0	2.1	2.2	5.8	1.2	1.2	1.1
6	5.0	5.3	5.3	2.2	2.4	6.3	1.3	1.3
7	1.0	5.1	5.4	5.4	2.3	2.4	6.3	1.3
8	8.0	1.0	5.3	5.7	5.7	2.4	2.5	6.6
K-5	20.0	16.4	12.8	12.2	11.2	6.6	6.6	6.6
6-8	14.0	11.4	16.0	13.3	10.4	11.1	10.1	9.2
K-8	34.0	27.8	28.8	25.5	21.6	17.7	16.7	15.8

Study Area 124 Projection Date 10/3/2018

	CURRENT	PROJECTED RESIDENT STUDENTS						
	2018	2019	2020	2021	2022	2023	2024	2025
K	6.0	6.2	5.6	6.6	6.2	6.1	6.1	6.1
1	1.0	6.0	6.2	5.6	6.6	6.2	6.1	6.1
2	2.0	1.0	6.3	6.5	5.9	7.0	6.5	6.5
3	1.0	2.1	1.1	6.7	6.9	6.3	7.4	6.9
4	3.0	1.0	2.2	1.2	7.0	7.2	6.6	7.8
5	4.0	3.0	1.0	2.2	1.2	7.0	7.2	6.6
6	1.0	4.3	3.2	1.1	2.4	1.3	7.5	7.7
7	5.0	1.0	4.3	3.2	1.1	2.4	1.3	7.6
8	1.0	5.2	1.1	4.5	3.4	1.2	2.5	1.3
K-5	17.0	19.3	22.4	28.8	33.8	39.8	39.9	40.0
6-8	7.0	10.5	8.6	8.8	6.9	4.9	11.3	16.6
K-8	24.0	29.8	31.0	37.6	40.7	44.7	51.2	56.6

**Los Gatos USD****2018/19 Forecast Report**

Study Area 125 Projection Date 10/3/2018

	CURRENT	PROJECTED RESIDENT STUDENTS						
	2018	2019	2020	2021	2022	2023	2024	2025
K	0.0	0.0	0.0	0.0	0.0	0.0	0.0	0.0
1	5.0	0.0	0.0	0.0	0.0	0.0	0.0	0.0
2	5.0	5.0	0.0	0.0	0.0	0.0	0.0	0.0
3	6.0	5.2	5.2	0.0	0.0	0.0	0.0	0.0
4	3.0	6.3	5.4	5.4	0.0	0.0	0.0	0.0
5	3.0	3.1	6.4	5.5	5.5	0.0	0.0	0.0
6	3.0	3.2	3.2	6.8	5.8	5.8	0.0	0.0
7	4.0	3.0	3.2	3.2	6.8	5.8	5.8	0.0
8	3.0	4.1	3.1	3.3	3.3	7.0	6.0	6.0
K-5	22.0	19.6	17.0	10.9	5.5	0.0	0.0	0.0
6-8	10.0	10.3	9.5	13.3	15.9	18.6	11.8	6.0
K-8	32.0	29.9	26.5	24.2	21.4	18.6	11.8	6.0

Study Area 126 Projection Date 10/3/2018

	CURRENT	PROJECTED RESIDENT STUDENTS						
	2018	2019	2020	2021	2022	2023	2024	2025
K	2.0	2.3	2.3	3.0	2.2	2.4	2.4	2.4
1	1.0	2.0	2.3	2.2	2.9	2.2	2.4	2.4
2	1.0	1.1	2.1	2.5	2.4	3.2	2.4	2.6
3	2.0	1.0	1.1	2.2	2.6	2.5	3.3	2.5
4	4.0	2.1	1.1	1.2	2.3	2.7	2.6	3.4
5	4.0	3.9	2.0	1.0	1.1	2.2	2.6	2.5
6	4.0	4.1	4.0	2.1	1.1	1.2	2.3	2.7
7	5.0	4.0	4.1	4.0	2.1	1.1	1.2	2.3
8	2.0	5.0	4.0	4.1	4.0	2.1	1.1	1.2
K-5	14.0	12.4	10.9	12.1	13.5	15.2	15.7	15.8
6-8	11.0	13.1	12.1	10.2	7.2	4.4	4.6	6.2
K-8	25.0	25.5	23.0	22.3	20.7	19.6	20.3	22.0

**Los Gatos USD****2018/19 Forecast Report**

Study Area 127 Projection Date 10/3/2018

	CURRENT	PROJECTED RESIDENT STUDENTS						
	2018	2019	2020	2021	2022	2023	2024	2025
K	0.0	0.0	0.0	0.0	0.0	0.0	0.0	0.0
1	3.0	0.0	0.0	0.0	0.0	0.0	0.0	0.0
2	4.0	3.2	0.0	0.0	0.0	0.0	0.0	0.0
3	1.0	4.2	3.3	0.0	0.0	0.0	0.0	0.0
4	1.0	1.0	4.5	3.5	0.0	0.0	0.0	0.0
5	5.0	1.0	1.0	4.5	3.5	0.0	0.0	0.0
6	5.0	5.3	1.1	1.1	4.8	3.8	0.0	0.0
7	6.0	5.1	5.4	1.1	1.1	4.8	3.8	0.0
8	5.0	6.3	5.3	5.7	1.1	1.2	5.1	4.0
K-5	14.0	9.4	8.8	8.0	3.5	0.0	0.0	0.0
6-8	16.0	16.7	11.8	7.9	7.0	9.8	8.9	4.0
K-8	30.0	26.1	20.6	15.9	10.5	9.8	8.9	4.0

Study Area 128 Projection Date 10/3/2018

	CURRENT	PROJECTED RESIDENT STUDENTS						
	2018	2019	2020	2021	2022	2023	2024	2025
K	1.0	1.2	1.1	1.5	1.1	1.2	1.2	1.2
1	0.0	1.0	1.2	1.1	1.5	1.1	1.2	1.2
2	2.0	0.0	1.0	1.2	1.2	1.6	1.2	1.3
3	2.0	2.1	0.0	1.1	1.3	1.3	1.7	1.2
4	3.0	2.1	2.2	0.0	1.2	1.4	1.3	1.7
5	2.0	3.0	2.1	2.2	0.0	1.2	1.4	1.3
6	4.0	2.1	3.2	2.2	2.4	0.0	1.3	1.5
7	1.0	4.0	2.2	3.2	2.3	2.4	0.0	1.3
8	11.0	1.0	4.2	2.3	3.4	2.4	2.5	0.0
K-5	10.0	9.4	7.6	7.1	6.3	7.8	8.0	7.9
6-8	16.0	7.1	9.6	7.7	8.1	4.8	3.8	2.8
K-8	26.0	16.5	17.2	14.8	14.4	12.6	11.8	10.7

**Los Gatos USD****2018/19 Forecast Report**

Study Area 129 Projection Date 10/3/2018

	CURRENT	PROJECTED RESIDENT STUDENTS						
	2018	2019	2020	2021	2022	2023	2024	2025
K	5.0	5.8	5.7	7.5	5.5	6.1	6.1	6.1
1	4.0	5.0	5.8	5.7	7.5	5.5	6.1	6.1
2	3.0	4.2	5.2	6.1	5.9	7.8	5.8	6.4
3	7.0	3.2	4.5	5.6	6.5	6.3	8.3	6.2
4	11.0	7.3	3.3	4.7	5.8	6.8	6.6	8.7
5	3.0	11.0	7.3	3.3	4.7	5.8	6.8	6.6
6	8.0	3.2	11.8	7.9	3.6	5.0	6.3	7.3
7	9.0	8.1	3.2	11.9	7.9	3.6	5.1	6.3
8	4.0	9.4	8.5	3.4	12.5	8.3	3.8	5.3
K-5	33.0	36.5	31.8	32.9	35.9	38.3	39.7	40.1
6-8	21.0	20.7	23.5	23.2	24.0	16.9	15.2	18.9
K-8	54.0	57.2	55.3	56.1	59.9	55.2	54.9	59.0

Study Area 130 Projection Date 10/3/2018

	CURRENT	PROJECTED RESIDENT STUDENTS						
	2018	2019	2020	2021	2022	2023	2024	2025
K	2.0	2.3	2.3	3.0	2.2	2.4	2.4	2.4
1	0.0	2.0	2.3	2.3	3.0	2.2	2.4	2.4
2	4.0	0.0	2.1	2.4	2.4	3.1	2.3	2.6
3	4.0	4.2	0.0	2.2	2.6	2.5	3.3	2.5
4	5.0	4.2	4.5	0.0	2.3	2.7	2.6	3.5
5	4.0	5.0	4.2	4.5	0.0	2.3	2.7	2.6
6	2.0	4.3	5.3	4.5	4.8	0.0	2.5	2.9
7	2.0	2.0	4.3	5.4	4.5	4.8	0.0	2.5
8	3.0	2.1	2.1	4.5	5.7	4.8	5.1	0.0
K-5	19.0	17.7	15.4	14.4	12.5	15.2	15.7	16.0
6-8	7.0	8.4	11.7	14.4	15.0	9.6	7.6	5.4
K-8	26.0	26.1	27.1	28.8	27.5	24.8	23.3	21.4

**Los Gatos USD****2018/19 Forecast Report**

Study Area 131 Projection Date 10/3/2018

	CURRENT	PROJECTED RESIDENT STUDENTS						
	2018	2019	2020	2021	2022	2023	2024	2025
K	2.0	2.3	2.3	3.0	2.2	2.4	2.4	2.4
1	0.0	2.0	2.3	2.3	3.0	2.2	2.4	2.4
2	0.0	0.0	2.1	2.4	2.4	3.1	2.3	2.6
3	1.0	0.0	0.0	2.2	2.6	2.5	3.3	2.5
4	0.0	1.0	0.0	0.0	2.3	2.7	2.6	3.5
5	1.0	0.0	1.0	0.0	0.0	2.3	2.7	2.6
6	2.0	1.1	0.0	1.1	0.0	0.0	2.5	2.9
7	0.0	2.0	1.1	0.0	1.1	0.0	0.0	2.5
8	0.0	0.0	2.1	1.1	0.0	1.2	0.0	0.0
K-5	4.0	5.3	7.7	9.9	12.5	15.2	15.7	16.0
6-8	2.0	3.1	3.2	2.2	1.1	1.2	2.5	5.4
K-8	6.0	8.4	10.9	12.1	13.6	16.4	18.2	21.4

Study Area 132 Projection Date 10/3/2018

	CURRENT	PROJECTED RESIDENT STUDENTS						
	2018	2019	2020	2021	2022	2023	2024	2025
K	2.0	2.1	1.9	2.2	2.1	2.0	2.0	2.0
1	2.0	2.1	2.2	2.0	2.4	2.2	2.2	2.2
2	2.0	2.0	2.1	2.2	2.0	2.4	2.2	2.2
3	3.0	2.1	2.1	2.2	2.3	2.1	2.4	2.3
4	3.0	3.2	2.2	2.2	2.3	2.4	2.2	2.6
5	2.0	3.1	3.2	2.2	2.2	2.4	2.4	2.2
6	7.0	2.1	3.2	3.4	2.3	2.3	2.5	2.6
7	6.0	7.0	2.1	3.2	3.4	2.3	2.3	2.5
8	3.0	6.2	7.2	2.2	3.3	3.5	2.4	2.4
K-5	14.0	14.6	13.7	13.0	13.3	13.5	13.4	13.5
6-8	16.0	15.3	12.5	8.8	9.0	8.1	7.2	7.5
K-8	30.0	29.9	26.2	21.8	22.3	21.6	20.6	21.0



**Los Gatos USD****2018/19 Forecast Report**

Study Area 133 Projection Date 10/3/2018

	CURRENT	PROJECTED RESIDENT STUDENTS						
	2018	2019	2020	2021	2022	2023	2024	2025
K	0.0	0.0	0.4	0.6	0.4	0.4	0.4	0.4
1	0.0	0.0	0.4	0.8	0.6	0.4	0.4	0.4
2	1.0	0.0	0.4	0.8	0.8	0.6	0.4	0.4
3	1.0	1.0	0.4	0.8	0.8	0.9	0.7	0.5
4	1.0	1.0	1.5	0.8	0.8	0.9	0.9	0.7
5	1.0	1.0	1.5	1.9	0.8	0.9	0.9	0.9
6	2.0	1.1	1.5	2.0	2.0	0.9	0.9	0.9
7	1.0	2.0	1.6	2.0	2.0	2.0	0.9	0.9
8	3.0	1.0	2.6	2.1	2.1	2.0	2.1	0.9
K-5	4.0	3.0	4.6	5.7	4.2	4.1	3.7	3.3
6-8	6.0	4.1	5.7	6.1	6.1	4.9	3.9	2.7
K-8	10.0	7.1	10.3	11.8	10.3	9.0	7.6	6.0

Study Area 134 Projection Date 10/3/2018

	CURRENT	PROJECTED RESIDENT STUDENTS						
	2018	2019	2020	2021	2022	2023	2024	2025
K	2.0	2.1	1.9	2.2	2.1	2.0	2.0	2.0
1	2.0	2.1	2.2	2.0	2.4	2.2	2.2	2.2
2	2.0	2.0	2.1	2.2	2.0	2.4	2.2	2.2
3	1.0	2.1	2.1	2.2	2.3	2.1	2.4	2.3
4	2.0	1.0	2.2	2.2	2.3	2.4	2.2	2.6
5	1.0	2.0	1.1	2.2	2.2	2.4	2.4	2.2
6	3.0	1.1	2.2	1.1	2.3	2.3	2.5	2.6
7	4.0	3.0	1.1	2.2	1.1	2.3	2.3	2.5
8	4.0	4.1	3.1	1.1	2.2	1.2	2.4	2.4
K-5	10.0	11.3	11.6	13.0	13.3	13.5	13.4	13.5
6-8	11.0	8.2	6.4	4.4	5.6	5.8	7.2	7.5
K-8	21.0	19.5	18.0	17.4	18.9	19.3	20.6	21.0

**Los Gatos USD****2018/19 Forecast Report**

Study Area 135 Projection Date 10/3/2018

	CURRENT	PROJECTED RESIDENT STUDENTS						
	2018	2019	2020	2021	2022	2023	2024	2025
K	5.0	5.0	5.0	5.0	5.0	5.0	5.0	5.0
1	4.0	5.3	5.3	5.3	5.3	5.3	5.3	5.3
2	14.0	4.0	5.3	5.3	5.3	5.3	5.3	5.3
3	11.0	14.4	4.1	5.5	5.5	5.5	5.5	5.5
4	6.0	11.6	15.1	4.3	5.8	5.8	5.8	5.8
5	13.0	6.1	11.8	15.4	4.4	5.9	5.9	5.9
6	14.0	13.8	6.5	12.5	16.4	4.7	6.3	6.3
7	14.0	14.0	13.8	6.5	12.5	16.4	4.7	6.3
8	14.0	14.4	14.4	14.2	6.7	12.9	16.9	4.8
K-5	53.0	46.4	46.6	40.8	31.3	32.8	32.8	32.8
6-8	42.0	42.2	34.7	33.2	35.6	34.0	27.9	17.4
K-8	95.0	88.6	81.3	74.0	66.9	66.8	60.7	50.2

Study Area 136A Projection Date 10/3/2018

	CURRENT	PROJECTED RESIDENT STUDENTS						
	2018	2019	2020	2021	2022	2023	2024	2025
K	5.0	5.0	5.0	5.0	5.0	5.0	5.0	5.0
1	3.0	5.3	5.3	5.3	5.3	5.3	5.3	5.3
2	3.0	3.0	5.3	5.3	5.3	5.3	5.3	5.3
3	4.0	3.1	3.1	5.5	5.5	5.5	5.5	5.5
4	8.0	4.2	3.2	3.2	5.8	5.8	5.8	5.8
5	5.0	8.2	4.3	3.3	3.3	5.9	5.9	5.9
6	5.0	5.3	8.6	4.5	3.5	3.5	6.3	6.3
7	8.0	5.0	5.3	8.6	4.5	3.5	3.5	6.3
8	6.0	8.2	5.2	5.5	8.9	4.7	3.6	3.6
K-5	28.0	28.8	26.2	27.6	30.2	32.8	32.8	32.8
6-8	19.0	18.5	19.1	18.6	16.9	11.7	13.4	16.2
K-8	47.0	47.3	45.3	46.2	47.1	44.5	46.2	49.0

**Los Gatos USD****2018/19 Forecast Report**

Study Area 137 Projection Date 10/3/2018

	CURRENT	PROJECTED RESIDENT STUDENTS						
	2018	2019	2020	2021	2022	2023	2024	2025
K	2.0	2.3	2.3	3.0	2.2	2.4	2.4	2.4
1	1.0	2.0	2.3	2.3	3.0	2.2	2.4	2.4
2	4.0	1.0	2.1	2.4	2.4	3.1	2.3	2.6
3	1.0	4.2	1.1	2.2	2.6	2.5	3.3	2.5
4	4.0	1.0	4.5	1.2	2.3	2.7	2.6	3.5
5	4.0	4.0	1.0	4.5	1.2	2.3	2.7	2.6
6	3.0	4.3	4.3	1.1	4.8	1.3	2.5	2.9
7	2.0	3.0	4.3	4.3	1.1	4.8	1.3	2.5
8	2.0	2.1	3.2	4.5	4.5	1.2	5.1	1.3
K-5	16.0	14.5	13.3	15.6	13.7	15.2	15.7	16.0
6-8	7.0	9.4	11.8	9.9	10.4	7.3	8.9	6.7
K-8	23.0	23.9	25.1	25.5	24.1	22.5	24.6	22.7

Study Area 138 Projection Date 10/3/2018

	CURRENT	PROJECTED RESIDENT STUDENTS						
	2018	2019	2020	2021	2022	2023	2024	2025
K	0.0	0.0	0.0	0.0	0.0	0.0	0.0	0.0
1	2.0	0.0	0.0	0.0	0.0	0.0	0.0	0.0
2	1.0	2.1	0.0	0.0	0.0	0.0	0.0	0.0
3	3.0	1.1	2.2	0.0	0.0	0.0	0.0	0.0
4	3.0	3.2	1.1	2.3	0.0	0.0	0.0	0.0
5	2.0	3.0	3.2	1.1	2.3	0.0	0.0	0.0
6	6.0	2.1	3.2	3.4	1.2	2.5	0.0	0.0
7	6.0	6.1	2.2	3.2	3.4	1.2	2.5	0.0
8	2.0	6.3	6.4	2.3	3.4	3.6	1.3	2.7
K-5	11.0	9.4	6.5	3.4	2.3	0.0	0.0	0.0
6-8	14.0	14.5	11.8	8.9	8.0	7.3	3.8	2.7
K-8	25.0	23.9	18.3	12.3	10.3	7.3	3.8	2.7

**Los Gatos USD****2018/19 Forecast Report**

Study Area 139 Projection Date 10/3/2018

	CURRENT	PROJECTED RESIDENT STUDENTS						
	2018	2019	2020	2021	2022	2023	2024	2025
K	1.0	1.2	1.1	1.5	1.1	1.2	1.2	1.2
1	2.0	1.0	1.2	1.1	1.5	1.1	1.2	1.2
2	3.0	2.1	1.0	1.2	1.2	1.6	1.2	1.3
3	1.0	3.2	2.2	1.1	1.3	1.3	1.7	1.2
4	0.0	1.0	3.3	2.3	1.2	1.4	1.3	1.7
5	5.0	0.0	1.0	3.3	2.3	1.2	1.4	1.3
6	7.0	5.3	0.0	1.1	3.6	2.5	1.3	1.5
7	5.0	7.1	5.4	0.0	1.1	3.6	2.5	1.3
8	3.0	5.2	7.4	5.7	0.0	1.2	3.8	2.7
K-5	12.0	8.5	9.8	10.5	8.6	7.8	8.0	7.9
6-8	15.0	17.6	12.8	6.8	4.7	7.3	7.6	5.5
K-8	27.0	26.1	22.6	17.3	13.3	15.1	15.6	13.4

Study Area 140 Projection Date 10/3/2018

	CURRENT	PROJECTED RESIDENT STUDENTS						
	2018	2019	2020	2021	2022	2023	2024	2025
K	1.0	1.2	1.1	1.5	1.1	1.2	1.2	1.2
1	1.0	1.0	1.2	1.1	1.5	1.1	1.2	1.2
2	0.0	1.0	1.0	1.2	1.2	1.6	1.2	1.3
3	1.0	0.0	1.1	1.1	1.3	1.3	1.7	1.2
4	0.0	1.0	0.0	1.2	1.2	1.4	1.3	1.7
5	1.0	0.0	1.0	0.0	1.2	1.2	1.4	1.3
6	3.0	1.1	0.0	1.1	0.0	1.3	1.3	1.5
7	0.0	3.0	1.1	0.0	1.1	0.0	1.3	1.3
8	2.0	0.0	3.2	1.1	0.0	1.2	0.0	1.3
K-5	4.0	4.2	5.4	6.1	7.5	7.8	8.0	7.9
6-8	5.0	4.1	4.3	2.2	1.1	2.5	2.6	4.1
K-8	9.0	8.3	9.7	8.3	8.6	10.3	10.6	12.0

**Los Gatos USD****2018/19 Forecast Report**

Study Area 141 Projection Date 10/3/2018

	CURRENT	PROJECTED RESIDENT STUDENTS						
	2018	2019	2020	2021	2022	2023	2024	2025
K	4.0	4.7	4.5	6.0	4.4	4.9	4.9	4.9
1	1.0	4.0	4.7	4.5	6.0	4.4	4.9	4.9
2	3.0	1.0	4.2	4.9	4.8	6.3	4.7	5.1
3	3.0	3.2	1.1	4.5	5.2	5.0	6.6	4.9
4	3.0	3.2	3.3	1.2	4.7	5.4	5.3	7.0
5	6.0	3.0	3.2	3.3	1.2	4.7	5.4	5.3
6	4.0	6.4	3.2	3.4	3.6	1.3	5.0	5.8
7	6.0	4.0	6.5	3.2	3.4	3.6	1.3	5.1
8	7.0	6.3	4.2	6.8	3.4	3.6	3.8	1.3
K-5	20.0	19.1	21.0	24.4	26.3	30.7	31.8	32.1
6-8	17.0	16.7	13.9	13.4	10.4	8.5	10.1	12.2
K-8	37.0	35.8	34.9	37.8	36.7	39.2	41.9	44.3

Study Area 142 Projection Date 10/3/2018

	CURRENT	PROJECTED RESIDENT STUDENTS						
	2018	2019	2020	2021	2022	2023	2024	2025
K	3.0	3.5	3.4	4.5	3.3	3.7	3.7	3.7
1	3.0	3.0	3.5	3.4	4.5	3.3	3.7	3.7
2	0.0	3.2	3.2	3.7	3.6	4.7	3.5	3.9
3	3.0	0.0	3.3	3.3	3.9	3.8	5.0	3.7
4	3.0	3.2	0.0	3.5	3.5	4.1	4.0	5.2
5	1.0	3.0	3.2	0.0	3.5	3.5	4.1	4.0
6	2.0	1.1	3.2	3.4	0.0	3.8	3.8	4.4
7	2.0	2.0	1.1	3.2	3.4	0.0	3.8	3.8
8	0.0	2.1	2.1	1.1	3.4	3.6	0.0	4.0
K-5	13.0	15.9	16.6	18.4	22.3	23.1	24.0	24.2
6-8	4.0	5.2	6.4	7.7	6.8	7.4	7.6	12.2
K-8	17.0	21.1	23.0	26.1	29.1	30.5	31.6	36.4

**Los Gatos USD****2018/19 Forecast Report**

Study Area 142A Projection Date 10/3/2018

	CURRENT	PROJECTED RESIDENT STUDENTS						
	2018	2019	2020	2021	2022	2023	2024	2025
K	0.0	0.0	0.0	0.0	0.0	0.0	0.0	0.0
1	3.0	0.0	0.0	0.0	0.0	0.0	0.0	0.0
2	3.0	3.2	0.0	0.0	0.0	0.0	0.0	0.0
3	4.0	3.2	3.3	0.0	0.0	0.0	0.0	0.0
4	1.0	4.2	3.3	3.5	0.0	0.0	0.0	0.0
5	3.0	1.0	4.2	3.3	3.5	0.0	0.0	0.0
6	3.0	3.2	1.1	4.5	3.6	3.8	0.0	0.0
7	2.0	3.0	3.2	1.1	4.5	3.6	3.8	0.0
8	3.0	2.1	3.2	3.4	1.1	4.8	3.8	4.0
K-5	14.0	11.6	10.8	6.8	3.5	0.0	0.0	0.0
6-8	8.0	8.3	7.5	9.0	9.2	12.2	7.6	4.0
K-8	22.0	19.9	18.3	15.8	12.7	12.2	7.6	4.0

Study Area 143 Projection Date 10/3/2018

	CURRENT	PROJECTED RESIDENT STUDENTS						
	2018	2019	2020	2021	2022	2023	2024	2025
K	0.0	0.0	0.0	0.0	0.0	0.0	0.0	0.0
1	1.0	0.0	0.0	0.0	0.0	0.0	0.0	0.0
2	0.0	1.0	0.0	0.0	0.0	0.0	0.0	0.0
3	1.0	0.0	1.1	0.0	0.0	0.0	0.0	0.0
4	0.0	1.0	0.0	1.2	0.0	0.0	0.0	0.0
5	3.0	0.0	1.0	0.0	1.2	0.0	0.0	0.0
6	0.0	3.2	0.0	1.1	0.0	1.3	0.0	0.0
7	4.0	0.0	3.2	0.0	1.1	0.0	1.3	0.0
8	4.0	4.2	0.0	3.4	0.0	1.2	0.0	1.3
K-5	5.0	2.0	2.1	1.2	1.2	0.0	0.0	0.0
6-8	8.0	7.4	3.2	4.5	1.1	2.5	1.3	1.3
K-8	13.0	9.4	5.3	5.7	2.3	2.5	1.3	1.3

**Los Gatos USD****2018/19 Forecast Report**

Study Area 144 Projection Date 10/3/2018

	CURRENT	PROJECTED RESIDENT STUDENTS						
	2018	2019	2020	2021	2022	2023	2024	2025
K	0.0	0.0	0.0	0.0	0.0	0.0	0.0	0.0
1	2.0	0.0	0.0	0.0	0.0	0.0	0.0	0.0
2	0.0	2.1	0.0	0.0	0.0	0.0	0.0	0.0
3	2.0	0.0	2.2	0.0	0.0	0.0	0.0	0.0
4	4.0	2.1	0.0	2.3	0.0	0.0	0.0	0.0
5	1.0	4.0	2.1	0.0	2.3	0.0	0.0	0.0
6	1.0	1.1	4.3	2.2	0.0	2.5	0.0	0.0
7	0.0	1.0	1.1	4.3	2.3	0.0	2.5	0.0
8	2.0	0.0	1.1	1.1	4.5	2.4	0.0	2.7
K-5	9.0	8.2	4.3	2.3	2.3	0.0	0.0	0.0
6-8	3.0	2.1	6.5	7.6	6.8	4.9	2.5	2.7
K-8	12.0	10.3	10.8	9.9	9.1	4.9	2.5	2.7

Study Area 145 Projection Date 10/3/2018

	CURRENT	PROJECTED RESIDENT STUDENTS						
	2018	2019	2020	2021	2022	2023	2024	2025
K	2.0	2.3	2.3	3.0	2.2	2.4	2.4	2.4
1	2.0	2.0	2.3	2.3	3.0	2.2	2.4	2.4
2	2.0	2.1	2.1	2.4	2.4	3.1	2.3	2.6
3	3.0	2.1	2.2	2.2	2.6	2.5	3.3	2.5
4	4.0	3.2	2.2	2.3	2.3	2.7	2.6	3.5
5	1.0	4.0	3.2	2.2	2.3	2.3	2.7	2.6
6	5.0	1.1	4.3	3.4	2.4	2.5	2.5	2.9
7	2.0	5.1	1.1	4.3	3.4	2.4	2.5	2.5
8	4.0	2.1	5.3	1.1	4.5	3.6	2.5	2.7
K-5	14.0	15.7	14.3	14.4	14.8	15.2	15.7	16.0
6-8	11.0	8.3	10.7	8.8	10.3	8.5	7.5	8.1
K-8	25.0	24.0	25.0	23.2	25.1	23.7	23.2	24.1

**Los Gatos USD****2018/19 Forecast Report**

Study Area 146 Projection Date 10/3/2018

	CURRENT	PROJECTED RESIDENT STUDENTS						
	2018	2019	2020	2021	2022	2023	2024	2025
K	1.0	1.2	1.1	1.5	1.1	1.2	1.2	1.2
1	0.0	1.0	1.2	1.2	1.5	1.1	1.3	1.3
2	0.0	0.0	1.0	1.2	1.1	1.5	1.1	1.2
3	2.0	0.0	0.0	1.0	1.2	1.2	1.5	1.1
4	0.0	2.1	0.0	0.0	1.1	1.3	1.2	1.6
5	1.0	0.0	2.2	0.0	0.0	1.1	1.3	1.3
6	1.0	1.0	0.0	2.3	0.0	0.0	1.2	1.4
7	0.0	1.1	1.1	0.0	2.5	0.0	0.0	1.3
8	2.0	0.0	1.0	1.0	0.0	2.3	0.0	0.0
K-5	4.0	4.3	5.5	4.9	6.0	7.4	7.6	7.7
6-8	3.0	2.1	2.1	3.3	2.5	2.3	1.2	2.7
K-8	7.0	6.4	7.6	8.2	8.5	9.7	8.8	10.4

Study Area 147 Projection Date 10/3/2018

	CURRENT	PROJECTED RESIDENT STUDENTS						
	2018	2019	2020	2021	2022	2023	2024	2025
K	5.0	5.1	4.7	5.5	5.1	5.1	5.1	5.1
1	2.0	5.0	5.1	4.7	5.5	5.1	5.1	5.1
2	3.0	2.1	5.2	5.4	4.9	5.8	5.4	5.4
3	1.0	3.2	2.2	5.6	5.7	5.2	6.2	5.7
4	5.0	1.0	3.3	2.3	5.8	6.0	5.5	6.5
5	1.0	5.0	1.0	3.3	2.3	5.8	6.0	5.5
6	3.0	1.1	5.3	1.1	3.6	2.5	6.3	6.4
7	1.0	3.0	1.1	5.4	1.1	3.6	2.5	6.3
8	6.0	1.0	3.2	1.1	5.7	1.2	3.8	2.7
K-5	17.0	21.4	21.5	26.8	29.3	33.0	33.3	33.3
6-8	10.0	5.1	9.6	7.6	10.4	7.3	12.6	15.4
K-8	27.0	26.5	31.1	34.4	39.7	40.3	45.9	48.7



**Los Gatos USD****2018/19 Forecast Report**

Study Area 148 Projection Date 10/3/2018

	CURRENT	PROJECTED RESIDENT STUDENTS						
	2018	2019	2020	2021	2022	2023	2024	2025
K	1.0	0.9	0.9	1.0	1.2	1.0	1.0	1.0
1	4.0	1.0	1.0	1.0	1.0	1.2	1.0	1.0
2	0.0	3.9	1.0	0.9	0.9	1.0	1.2	1.0
3	0.0	0.0	4.0	1.0	1.0	1.0	1.0	1.2
4	0.0	0.0	0.0	4.2	1.1	1.0	1.0	1.0
5	1.0	0.0	0.0	0.0	4.5	1.1	1.1	1.1
6	0.0	1.0	0.0	0.0	0.0	4.6	1.2	1.1
7	1.0	0.0	1.1	0.0	0.0	0.0	4.9	1.3
8	0.0	0.9	0.0	1.0	0.0	0.0	0.0	4.6
K-5	6.0	5.8	6.9	8.1	9.7	6.3	6.3	6.3
6-8	1.0	1.9	1.1	1.0	0.0	4.6	6.1	7.0
K-8	7.0	7.7	8.0	9.1	9.7	10.9	12.4	13.3

Study Area 149 Projection Date 10/3/2018

	CURRENT	PROJECTED RESIDENT STUDENTS						
	2018	2019	2020	2021	2022	2023	2024	2025
K	4.0	3.7	3.8	3.8	4.8	4.0	4.0	4.0
1	0.0	4.1	3.8	3.9	4.0	4.9	4.1	4.1
2	6.0	0.0	4.0	3.8	3.8	3.9	4.8	4.0
3	1.0	6.1	0.0	4.1	3.8	3.9	3.9	4.9
4	7.0	1.1	6.5	0.0	4.4	4.1	4.1	4.2
5	6.0	7.3	1.1	6.8	0.0	4.6	4.3	4.3
6	9.0	6.2	7.6	1.2	7.1	0.0	4.8	4.4
7	8.0	9.5	6.6	8.1	1.2	7.5	0.0	5.1
8	6.0	7.4	8.9	6.2	7.5	1.1	7.0	0.0
K-5	24.0	22.3	19.2	22.4	20.8	25.4	25.2	25.5
6-8	23.0	23.1	23.1	15.5	15.8	8.6	11.8	9.5
K-8	47.0	45.4	42.3	37.9	36.6	34.0	37.0	35.0

**Los Gatos USD****2018/19 Forecast Report**

Study Area 151 Projection Date 10/3/2018

	CURRENT	PROJECTED RESIDENT STUDENTS						
	2018	2019	2020	2021	2022	2023	2024	2025
K	3.0	2.8	2.8	2.9	3.6	3.0	3.0	3.0
1	2.0	3.1	2.9	2.9	3.0	3.7	3.1	3.1
2	1.0	2.0	3.0	2.8	2.8	2.9	3.6	3.0
3	5.0	1.0	2.0	3.1	2.9	2.9	3.0	3.7
4	2.0	5.3	1.1	2.1	3.3	3.1	3.1	3.1
5	6.0	2.1	5.6	1.1	2.2	3.4	3.2	3.2
6	5.0	6.2	2.2	5.8	1.2	2.3	3.6	3.3
7	4.0	5.3	6.6	2.3	6.1	1.3	2.5	3.8
8	2.0	3.7	4.9	6.2	2.2	5.7	1.2	2.3
K-5	19.0	16.3	17.4	14.9	17.8	19.0	19.0	19.1
6-8	11.0	15.2	13.7	14.3	9.5	9.3	7.3	9.4
K-8	30.0	31.5	31.1	29.2	27.3	28.3	26.3	28.5

Study Area 152 Projection Date 10/3/2018

	CURRENT	PROJECTED RESIDENT STUDENTS						
	2018	2019	2020	2021	2022	2023	2024	2025
K	5.0	4.7	4.7	4.8	6.0	5.0	5.0	5.0
1	6.0	5.2	4.8	4.8	4.9	6.1	5.2	5.2
2	5.0	5.9	5.0	4.7	4.7	4.8	6.0	5.0
3	7.0	5.1	6.0	5.1	4.8	4.8	4.9	6.1
4	9.0	7.4	5.4	6.4	5.5	5.1	5.1	5.2
5	7.0	9.4	7.8	5.7	6.7	5.7	5.3	5.4
6	9.0	7.3	9.8	8.1	5.9	6.9	6.0	5.6
7	6.0	9.5	7.7	10.4	8.6	6.3	7.4	6.3
8	9.0	5.6	8.9	7.2	9.7	8.0	5.8	6.8
K-5	39.0	37.7	33.7	31.5	32.6	31.5	31.5	31.9
6-8	24.0	22.4	26.4	25.7	24.2	21.2	19.2	18.7
K-8	63.0	60.1	60.1	57.2	56.8	52.7	50.7	50.6

**Los Gatos USD****2018/19 Forecast Report**

Study Area 153      Projection Date 10/3/2018

	CURRENT	PROJECTED RESIDENT STUDENTS						
	2018	2019	2020	2021	2022	2023	2024	2025
K	3.0	2.8	2.8	2.9	3.6	3.0	3.0	3.0
1	1.0	3.1	2.9	2.9	3.0	3.7	3.1	3.1
2	2.0	1.0	3.0	2.8	2.8	2.9	3.6	3.0
3	2.0	2.0	1.0	3.1	2.9	2.9	3.0	3.7
4	1.0	2.1	2.2	1.1	3.3	3.1	3.1	3.1
5	1.0	1.0	2.2	2.3	1.1	3.4	3.2	3.2
6	0.0	1.0	1.1	2.3	2.4	1.2	3.6	3.3
7	0.0	0.0	1.1	1.2	2.5	2.5	1.2	3.8
8	2.0	0.0	0.0	1.0	1.1	2.3	2.3	1.1
K-5	10.0	12.0	14.1	15.1	16.7	19.0	19.0	19.1
6-8	2.0	1.0	2.2	4.5	6.0	6.0	7.1	8.2
K-8	12.0	13.0	16.3	19.6	22.7	25.0	26.1	27.3

Study Area 154      Projection Date 10/3/2018

	CURRENT	PROJECTED RESIDENT STUDENTS						
	2018	2019	2020	2021	2022	2023	2024	2025
K	3.0	2.8	2.8	2.9	3.6	3.0	3.0	3.0
1	3.0	3.1	2.9	2.9	3.0	3.7	3.1	3.1
2	6.0	2.9	3.0	2.8	2.8	2.9	3.6	3.0
3	5.0	6.1	3.0	3.1	2.9	2.9	3.0	3.7
4	5.0	5.3	6.5	3.2	3.3	3.1	3.1	3.1
5	2.0	5.2	5.6	6.8	3.3	3.4	3.2	3.2
6	4.0	2.1	5.5	5.8	7.1	3.5	3.6	3.3
7	5.0	4.2	2.2	5.8	6.1	7.5	3.7	3.8
8	2.0	4.7	3.9	2.1	5.4	5.7	7.0	3.4
K-5	24.0	25.4	23.8	21.7	18.9	19.0	19.0	19.1
6-8	11.0	11.0	11.6	13.7	18.6	16.7	14.3	10.5
K-8	35.0	36.4	35.4	35.4	37.5	35.7	33.3	29.6

Study Area 155 Projection Date 10/3/2018

	CURRENT	PROJECTED RESIDENT STUDENTS						
	2018	2019	2020	2021	2022	2023	2024	2025
K	2.0	1.9	1.9	1.9	2.4	2.0	2.0	2.0
1	0.0	2.1	1.9	1.9	2.0	2.5	2.1	2.1
2	4.0	0.0	2.0	1.9	1.9	1.9	2.4	2.0
3	2.0	4.1	0.0	2.1	1.9	1.9	2.0	2.5
4	6.0	2.1	4.3	0.0	2.2	2.0	2.1	2.1
5	1.0	6.3	2.2	4.5	0.0	2.3	2.1	2.2
6	7.0	1.0	6.6	2.3	4.7	0.0	2.4	2.2
7	1.0	7.4	1.1	6.9	2.5	5.0	0.0	2.5
8	3.0	0.9	6.9	1.0	6.5	2.3	4.7	0.0
K-5	15.0	16.5	12.3	12.3	10.4	12.6	12.7	12.9
6-8	11.0	9.3	14.6	10.2	13.7	7.3	7.1	4.7
K-8	26.0	25.8	26.9	22.5	24.1	19.9	19.8	17.6



## Demographic and Income Profile

Los Gatos, CA  
Los Gatos USD

Prepared using SchoolSite by DDP

Summary	Census 2010		2018		2023	
Population	27,128		28,982		30,192	
Households	10,980		11,540		11,940	
Families	7,190		7,615		7,904	
Average Household Size	2.44		2.49		2.50	
Owner Occupied Housing Units	7,262		7,595		8,237	
Renter Occupied Housing Units	3,718		3,945		3,703	
Median Age	45.0		47.4		47.8	
Trends: 2018 - 2023 Annual Rate	Area		State		National	
Population	0.82%		0.82%		0.83%	
Households	0.68%		0.76%		0.79%	
Families	0.75%		0.76%		0.71%	
Owner HHs	1.64%		1.73%		1.16%	
Median Household Income	2.74%		3.25%		2.50%	
Households by Income			2018		2023	
			Number	Percent	Number	Percent
	<\$15,000		335	2.9%	267	2.2%
	\$15,000 - \$24,999		265	2.3%	213	1.8%
	\$25,000 - \$34,999		337	2.9%	259	2.2%
	\$35,000 - \$49,999		520	4.5%	430	3.6%
	\$50,000 - \$74,999		1,122	9.7%	983	8.2%
	\$75,000 - \$99,999		1,074	9.3%	1,072	9.0%
	\$100,000 - \$149,999		1,759	15.2%	1,705	14.3%
	\$150,000 - \$199,999		1,414	12.3%	1,440	12.1%
\$200,000+		4,714	40.8%	5,570	46.6%	
Median Household Income		\$160,236		\$183,397		
Average Household Income		\$219,574		\$247,692		
Per Capita Income		\$88,593		\$99,190		
Population by Age	Census 2010		2018		2023	
	Number	Percent	Number	Percent	Number	Percent
	0 - 4	1,210 4.5%	1,144 3.9%	1,225 4.1%		
	5 - 9	1,844 6.8%	1,516 5.2%	1,546 5.1%		
	10 - 14	1,948 7.2%	1,902 6.6%	1,701 5.6%		
	15 - 19	1,730 6.4%	1,846 6.4%	1,652 5.5%		
	20 - 24	841 3.1%	1,444 5.0%	1,298 4.3%		
	25 - 34	2,119 7.8%	2,483 8.6%	3,340 11.1%		
	35 - 44	3,867 14.3%	3,083 10.6%	3,290 10.9%		
	45 - 54	5,307 19.6%	4,772 16.5%	4,188 13.9%		
	55 - 64	3,826 14.1%	5,013 17.3%	5,130 17.0%		
	65 - 74	2,288 8.4%	3,300 11.4%	3,897 12.9%		
	75 - 84	1,375 5.1%	1,647 5.7%	2,073 6.9%		
	85+	771 2.8%	832 2.9%	850 2.8%		
	Race and Ethnicity	Census 2010		2018		2023
Number		Percent	Number	Percent	Number	Percent
White Alone		22,632 83.4%	23,073 79.6%	23,109 76.5%		
Black Alone		149 0.5%	165 0.6%	174 0.6%		
American Indian Alone		85 0.3%	85 0.3%	85 0.3%		
Asian Alone		2,747 10.1%	3,802 13.1%	4,711 15.6%		
Pacific Islander Alone		37 0.1%	37 0.1%	39 0.1%		
Some Other Race Alone		361 1.3%	399 1.4%	429 1.4%		
Two or More Races		1,117 4.1%	1,420 4.9%	1,645 5.4%		
Hispanic Origin (Any Race)		1,773 6.5%	1,966 6.8%	2,151 7.1%		

**Data Note:** Income is expressed in current dollars.

**Source:** U.S. Census Bureau, Census 2010 Summary File 1. Esri forecasts for 2018 and 2023.



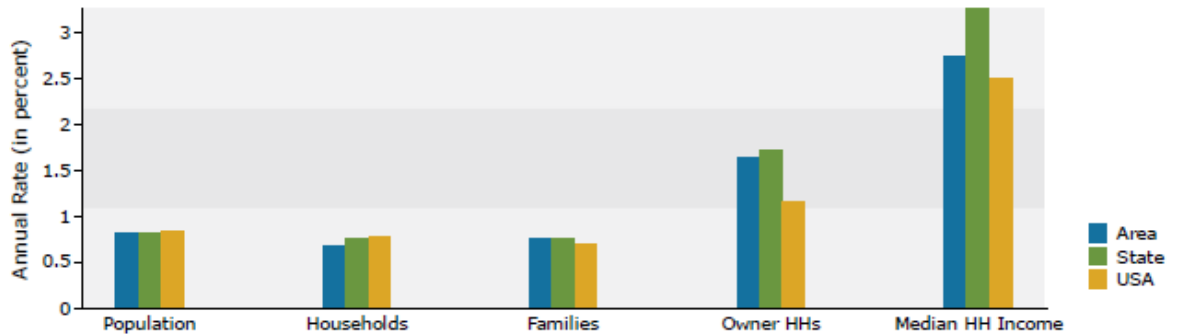
**esri**

## Demographic and Income Profile

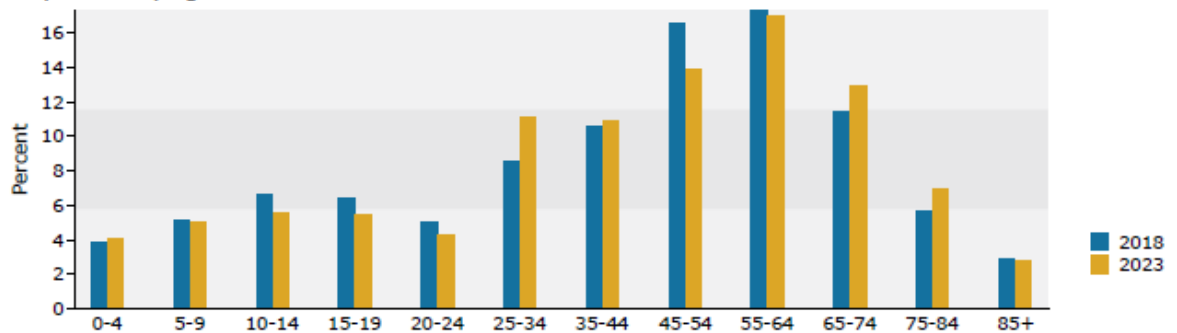
Los Gatos, CA  
Los Gatos USD

Prepared using SchoolSite by DDP

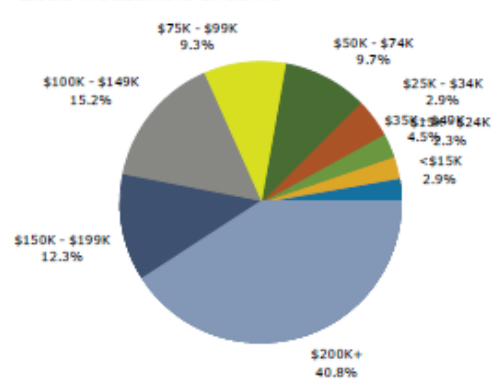
### Trends 2018-2023



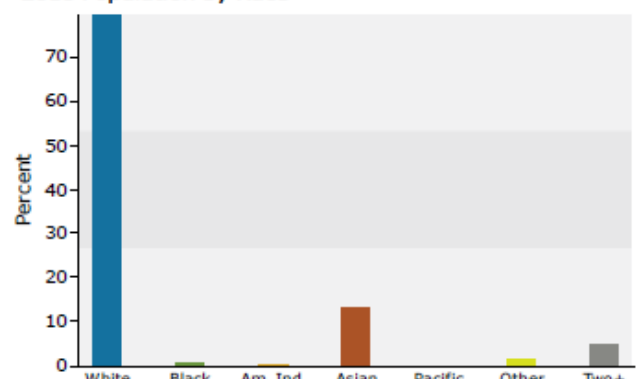
### Population by Age



### 2018 Household Income



### 2018 Population by Race



2018 Percent Hispanic Origin: 6.8%

Source: U.S. Census Bureau, Census 2010 Summary File 1. Esri forecasts for 2018 and 2023.