



Cragmont E.S.



John Muir E.S.

# CAFETERIA FOOD SERVICES EXPANSION / UPGRADES

## Schematic Design

## PROJECT TEAM

- Hibser Yamauchi Architects
- Cini-Little Food Service Consultants
- Kam Yan Assoc. Structural Eng.
- Interface Engineering Mech/Plumb
- WHM Electrical Engineering
- Silva Cost Consulting

Craig Durand, PA

Nina Idzerda, PM

Ernie Paleo, PM

## DESIGN MEETINGS

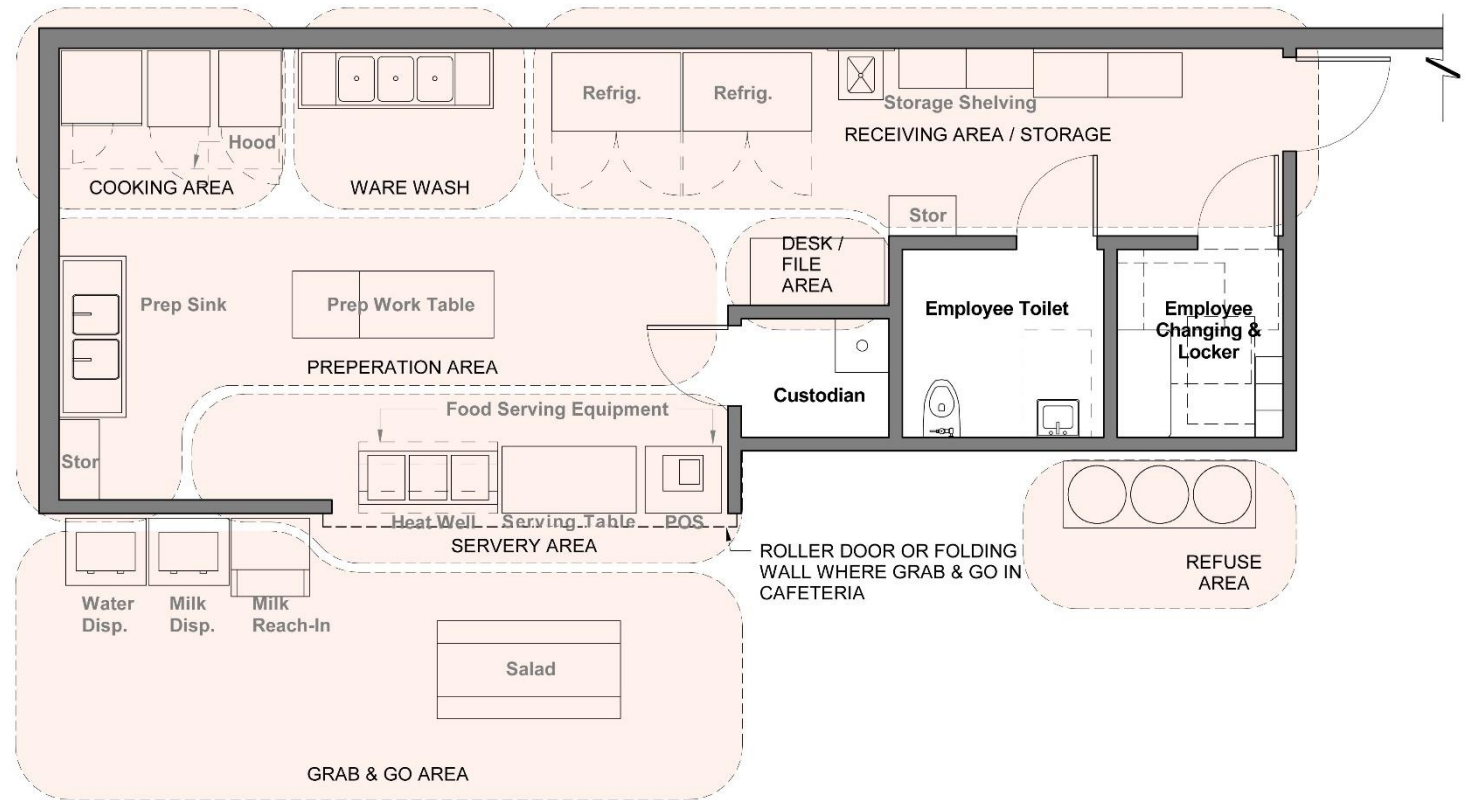
- 9/4/2018            John Muir design review meeting with Principal
- 9/11/2018           Cragmont design review meeting with Principal
- 12/17/2018          John Muir community meeting
- 12/18/2018          Cragmont community meeting

# PROJECT UPDATE & SCHEDULE

- John Muir E.S.
  - Schematic Design / Cost Estimate package completed
  - Target DSA submittal date 4/18/19
  - Anticipated DSA approval first week of August, 2019
- Cragmont E.S.
  - Schematic Design / Cost Estimate package completed
  - Target DSA submittal date 4/25/19
  - Anticipated DSA approval second week of August, 2019

# STANDARD PLAN

- Adjacencies and overall kitchen size
  - Overall size and work stations used for planning at the six schools
- Security
  - Kitchen activities secured and lockable
  - Grab & Go equipment is either included within secure servery area or able to be moved into kitchen and secured if needed.
- Open Desk / File station with safe.
- Includes kitchen staff restroom and changing room.





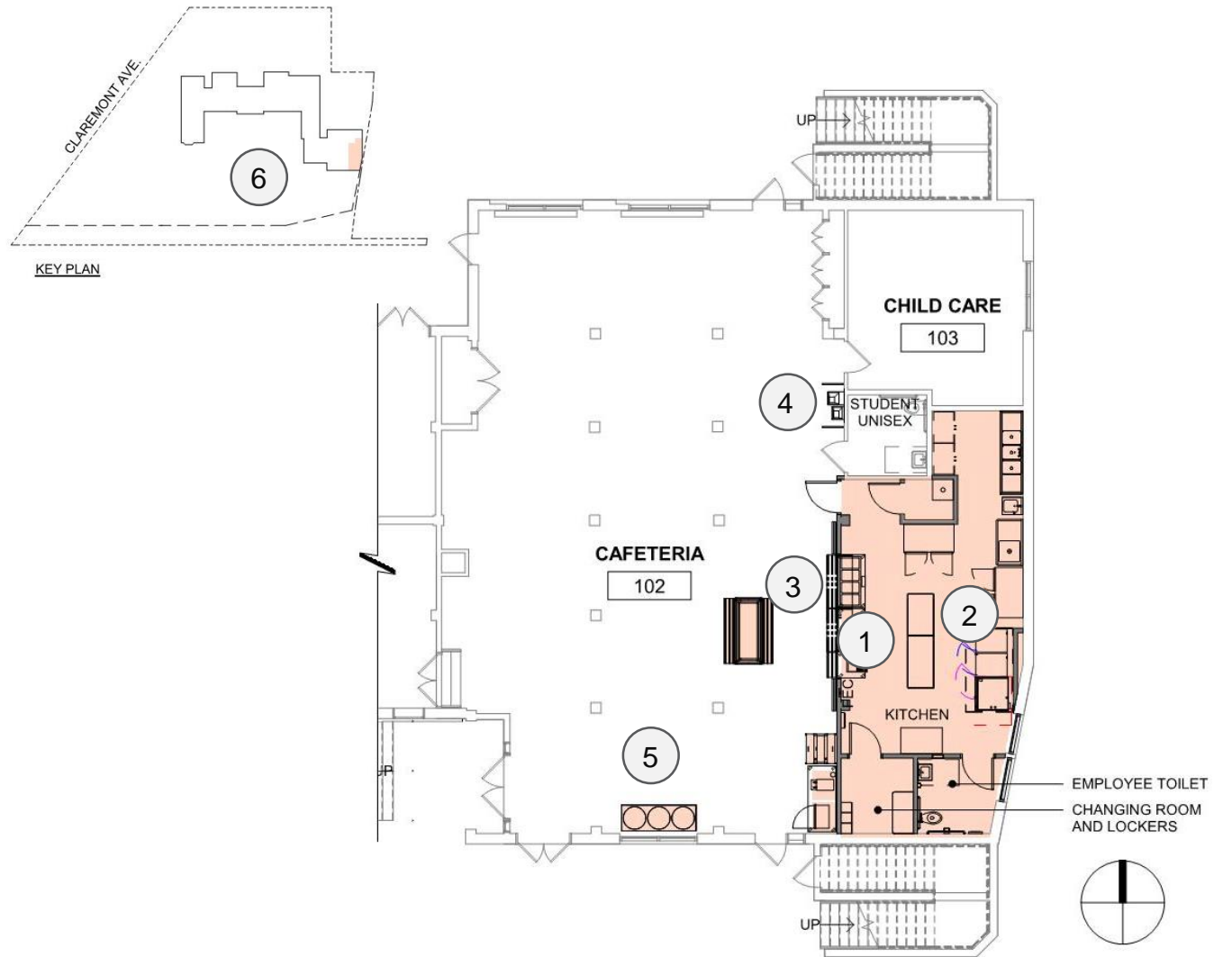
# JOHN MUIR E.S.

- Current servery area counter and kitchen equipment are within the cafeteria space.
- The sanitary sewer from the kitchen is old and doesn't work properly.



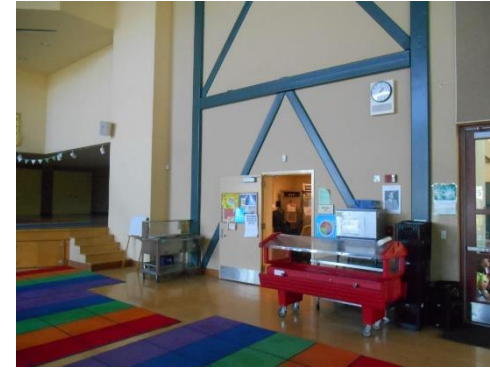
# JOHN MUIR E.S. LAYOUT

- 1 EXPAND KITCHEN WALL INTO CAFETERIA
- 2 RENOVATE CURRENT KITCHEN
- 3 BYPASS DOOR ALLOWS GRAB AND GO TO BE SECURED WITHIN KITCHEN SPACE
- 4 NEW DRINKING FOUNTAIN WITH BOTTLE FILLER
- 5 NEW MOVABLE REFUSE AREA
- 6 NEW SANITARY SEWER CONNECTION TO KITCHEN



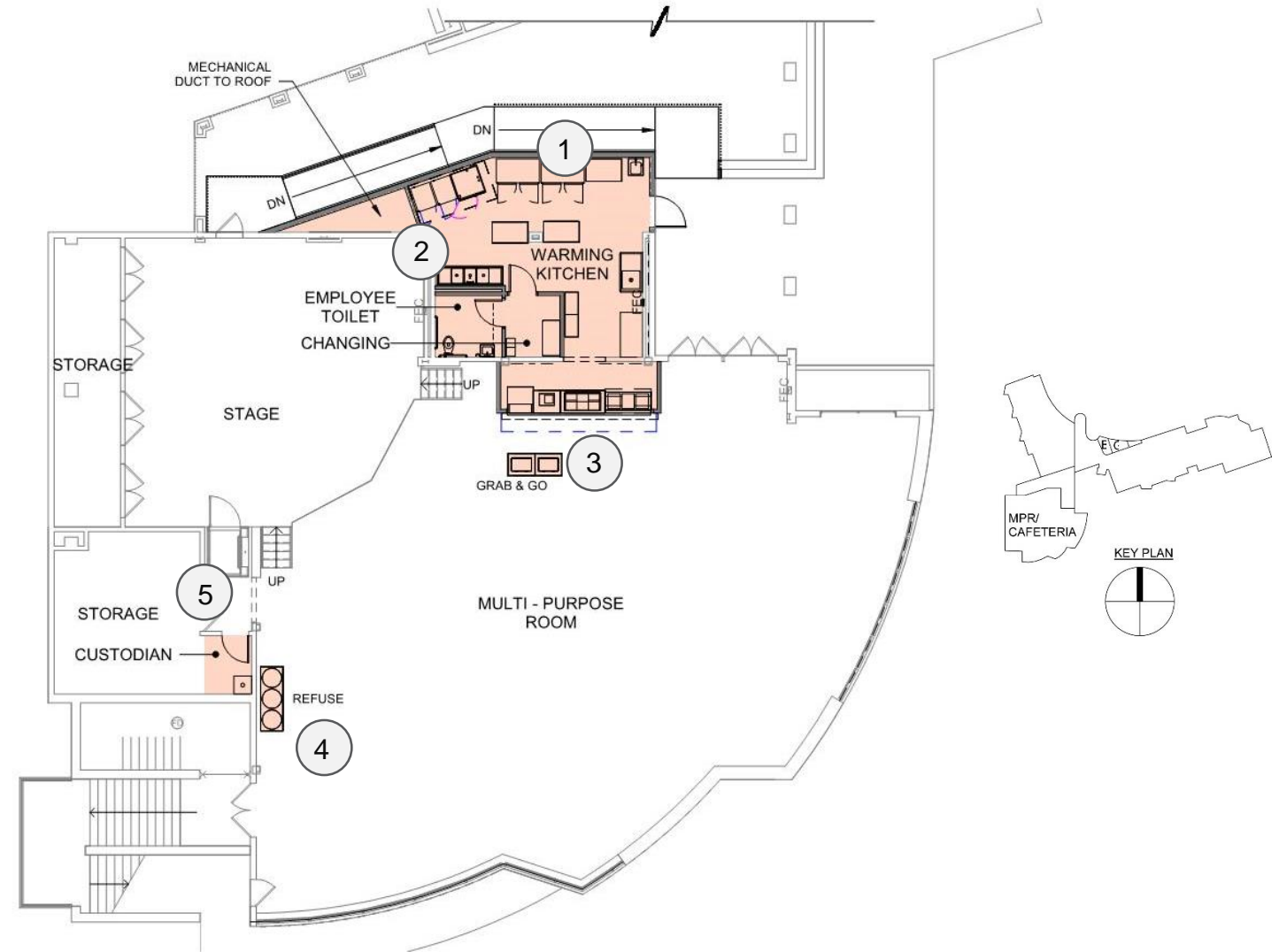
# CRAGMONT E.S.

- Kitchen equipment items are currently in the cafeteria.
- Existing food service room is undersized and there is no current hood.
- Food service room is surrounded on two sides by structural braced frame walls



# CRAGMONT E.S. LAYOUT

- 1 EXPAND CURRENT KITCHEN SPACE AND REVISE PLATFORM EXIT RAMP
- 2 BRING MECHANICAL DUCT CHASE THROUGH FLOOR ABOVE TO ROOF
- 3 SERVERY EXTENDS INTO CAFETERIA. ROLLING DOOR ALLOWS GRAB AND GO TO BE SECURED WITHIN KITCHEN SPACE. THE EXTENDED SPACE WILL NOT BLOCK THE VIEW OF THE STAGE. THIS SCHEME HAS BEEN APPROVED BY THE PRINCIPAL.
- 4 NEW MOVABLE REFUSE AREA
- 5 ADD MOP SINK AT STORAGE CLOSET





# APPROXIMATE SCHEDULE DURATION

Design Phase – 14 weeks

Agency Review & Approval – 6.5 months

Bid & Contract Award – 7 weeks

Cragmont Construction – 8 months

John Muir Construction – 6 months

# ESTIMATED CONSTRUCTION COST

Cragmont E.S.	<u>\$1,829,385</u>
---------------	--------------------

John Muir E.S.	<u>\$1,903,895</u>
----------------	--------------------

QUESTIONS?