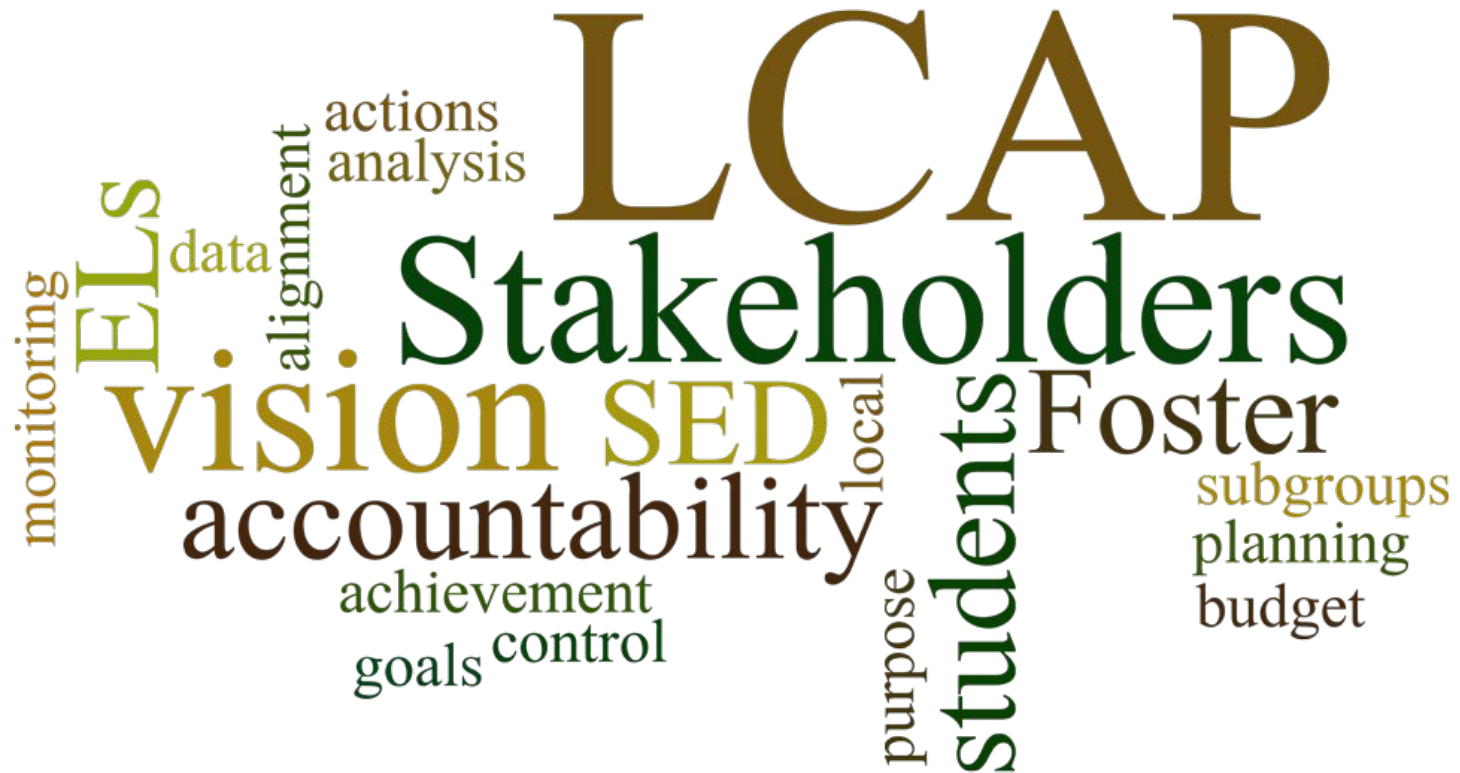


# LCAP/SPSA

Clarifying language  
Engagement Planning

# The Local Control Accountability Plan ...



# Let's Adjust our LCAP/SPSA language

We agree to say ...

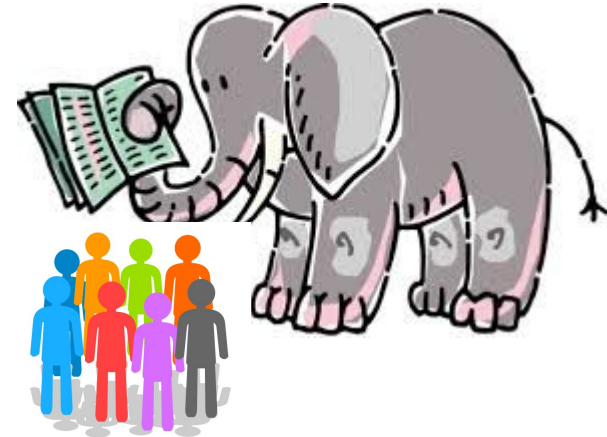
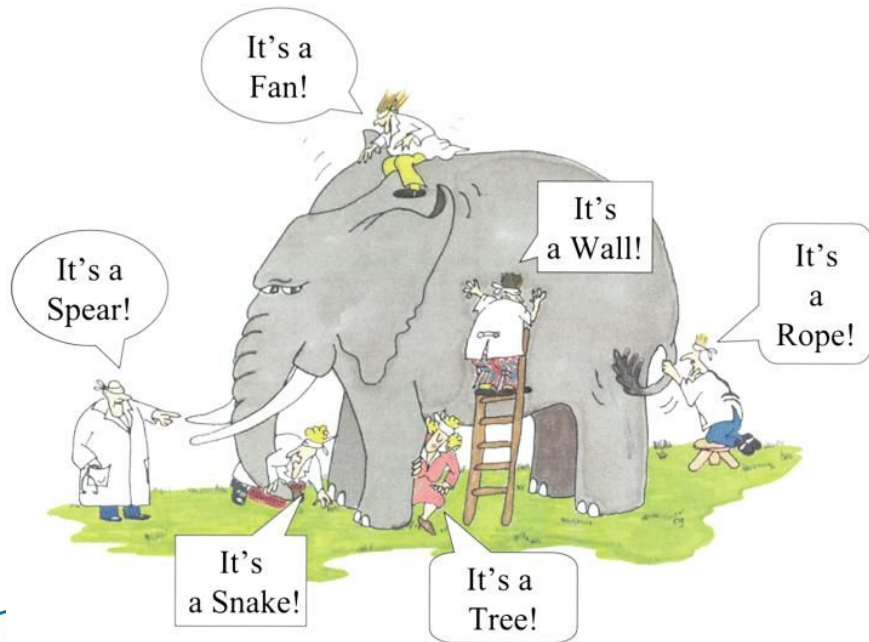
- ▷ “District LCAP plan, goals, &/or budget” .....
  - “School SPSA plan, goals (aligned with LCAP), &/or budget (which includes LCAP/Supplemental funds)”
    - Let's stop saying “School LCAP budget”.
- ▷ “District LCAP engagements” .....
  - “School SPSA engagements” (which can inform the District LCAP)

**WORDS  
MATTER.**

# WHY do District LCAP Engagements?

Stakeholders see “The Need” Differently ...

Thru Quality  
Engagements: “Move  
around the Elephant” &  
See The Need together!



# HOW do District LCAP Engagements?

## 3 Step Collaborative Inquiry!

- ▶ How are we doing?

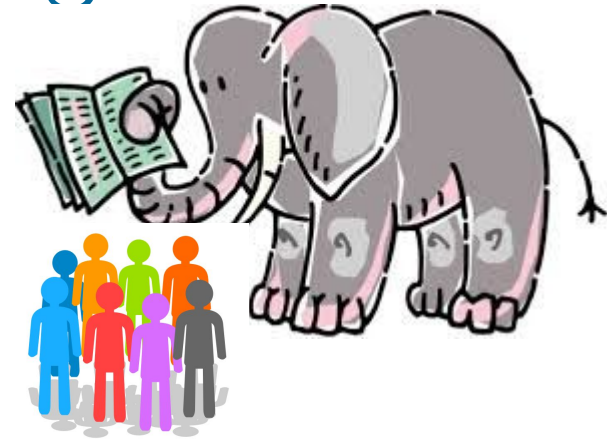
Review LCAP Goals & Data

- ▶ Why are we performing this way?

Collaborative “Root Causes” analysis

- ▶ What do we continue doing? Do differently? Stop doing? Start doing?

Review & propose LCAP Strategies



# WHAT District LCAP Engagements?

## “The Family/Community Roadshow”

4 scheduled by Complex + 1 scheduled for North Central

6:30-8:30pm (District Office leads; Sites promote & co-facilitate)

- ▷ **January 30: Bayside Complex** (Bayside, College Park, LEAD, North Shoreview, Parkside)
- ▷ **February 6: Bowditch Complex** (Bowditch, Audubon, Brewer Island, Foster City)
- ▷ **February 20: Borel Complex** (Borel, Baywood, Highlands, SM Park, Sunnybrae)
- ▷ **February 27: North Central** (possibly include Sunnybrae here due to conflicts)
- ▷ **March 6: Abbott Complex** (Abbott, Beresford, Fiesta Gardens, George Hall, Laurel, Meadow Heights)

# WHAT District LCAP Engagements?

## “The Staff Roadshow” (In development; consultation with unions)

- ▷ **2 Teacher**
  - February 11 “Southside” (school tbd), 3:30-5:30pm (childcare)
  - February 13 “Northside” at District Office, 2-4pm (doesn’t replace grade level Wednesdays)
- ▷ **2 Classified** (in planning)
- ▷ **1 Staff Follow-up** (during LCAP draft stage)
  - Late April



# WHAT District LCAP Engagements?

## Additional Stakeholders (tbd & scheduled)

- ▷ Student Councils
- ▷ DAC/DELAC
- ▷ PTA Council, March 18
- ▷ SEDAC (Special Education District Advisory Committee)
- ▷ ...





# This Plan for LCAP Engagement leads to?

- ▶ Management LCAP Inquiry in LTM/A3/S2
  - Review of & response to stakeholder LCAP input
- ▶ Executive Cabinet/Cabinet Inquiry
  - Similar review of & response to stakeholder input
- ▶ Board of Trustees Inquiry
  - Review of & response to Staff recommendations



# This Plan for LCAP Engagement leads to?

- ▶ **Schools** focus engagements on their site **SPSAs**
  - Teacher Teams to Whole Staff
  - PTA
  - School Site Council
- ▶ **District** supports **Site SPSA** engagements with model agendas/slide decks
  - Data; Root Cause Analysis; Keep/Adjust/Drop/Add
  - Invest in arriving at Consensus
- ▶ **Sites** elevate potential LCAP strategies to A3/LTM

