

Projected Enrollments

2018 to 2023

February 7, 2019, Board Presentation

SUMMARY OF FINDINGS

- (1) The projected total enrollment declines by 92 students in the next year (from October 2018 to October 2019) and by another 41 over the following two years, before rebounding to a net of only 29 fewer students in 2023. These modest overall differences will keep the district enrollment far above the total from any year in decades prior to 2011.**
- (2) The expected changes also are modest in the elementary and middle school totals, with net five-year enrollment differences that are within 100 of their current amounts. The largest change during that period is for the middle school total to have 163 fewer students in 2021.**
- (3) The greatest projected “resident” (home school) shifts over the next three years in the K-5 totals include growth by 67 students for George Hall, by 27 for each of Laurel and Bayside, and by 25 for Meadow Heights, along with reductions by 35 for Baywood, 30 for Highlands and 27 for LEAD. The other elementary regions are forecast to have relatively stable resident totals. The largest projected resident differences in three years in the 6-8 totals are reductions by 82 for Bayside and 62 for Bowditch. All of these projected changes are mainly due to the current student distributions through the grades in each attendance area.**
- (4) New housing is a factor in these projections, but over 95% of the future enrollments will come from the existing housing, with kindergarten expectations based on recent birth and student aging trends in each location.**

Chart 1: Actual and Projected Total Fall Enrollments, 1993 to 2023

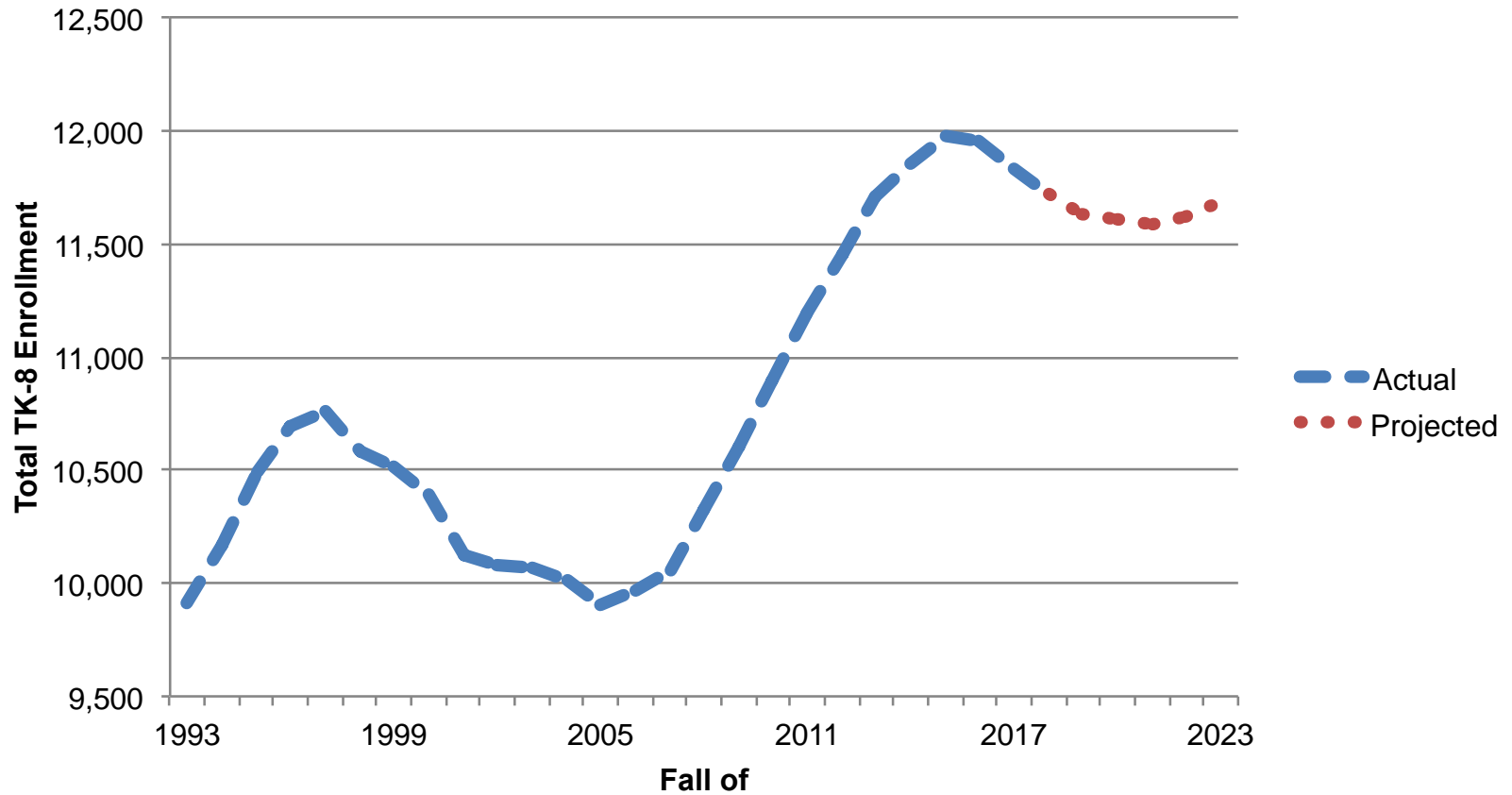


Table 1 (PowerPoint version): Actual and Projected Students by Grade and Grade Level in October of 2006 to 2023

(with color highlighting for totals that were, are, or are expected to be in 8th grade of: pink for 1,200+; blue for 1,150-1,199; yellow for 1,100-1,149; and orange for <1,100; the highest recent subtotals are highlighted in gray)

Early Oct. of	Actual and Projected Total Enrollment by Grade (including SDC and a nominal number of NPS students)										Actual and Projected Total Enrollment by Grade Group		
	TK	K	1	2	3	4	5	6	7	8	TK-5	6-8	TK-8
2006	NA	1,195	1,210	1,112	1,073	1,040	1,043	1,098	1,092	1,106	6,673	3,296	9,969
2007	NA	1,253	1,185	1,167	1,113	1,072	1,020	1,057	1,117	1,077	6,810	3,251	10,061
2008	NA	1,366	1,271	1,182	1,159	1,116	1,076	1,022	1,044	1,092	7,170	3,158	10,328
2009	NA	1,413	1,367	1,255	1,182	1,144	1,100	1,077	1,019	1,051	7,461	3,147	10,608
2010	NA	1,491	1,381	1,331	1,207	1,164	1,130	1,111	1,067	1,013	7,704	3,191	10,895
2011	NA	1,461	1,451	1,367	1,307	1,191	1,157	1,104	1,087	1,070	7,934	3,261	11,195
2012	79	1,457	1,448	1,385	1,337	1,289	1,178	1,108	1,110	1,064	8,173	3,282	11,455
2013	156	1,373	1,421	1,414	1,389	1,325	1,248	1,160	1,112	1,108	8,326	3,380	11,706
2014	261	1,306	1,360	1,411	1,378	1,355	1,308	1,237	1,154	1,086	8,379	3,477	11,856
2015	283	1,415	1,284	1,328	1,371	1,320	1,326	1,278	1,211	1,161	8,327	3,650	11,977
2016	272	1,390	1,392	1,277	1,290	1,336	1,267	1,284	1,252	1,196	8,224	3,732	11,956
2017	245	1,387	1,358	1,336	1,248	1,246	1,297	1,233	1,265	1,220	8,117	3,718	11,835
2018	234	1,311	1,335	1,342	1,319	1,225	1,249	1,227	1,225	1,252	8,015	3,704	11,719
2019	243	1,363	1,281	1,313	1,311	1,288	1,202	1,199	1,216	1,211	8,001	3,626	11,627
2020	248	1,387	1,333	1,262	1,287	1,279	1,266	1,160	1,183	1,205	8,062	3,548	11,610
2021	246	1,380	1,356	1,314	1,236	1,256	1,257	1,223	1,147	1,171	8,045	3,541	11,586
2022	246	1,379	1,352	1,340	1,290	1,212	1,236	1,221	1,211	1,139	8,055	3,571	11,626
2023	245	1,375	1,350	1,336	1,316	1,264	1,194	1,202	1,207	1,201	8,080	3,610	11,690

Total Grade-Level Change in One Year, from October 2018 to October 2019	-14	-78	-92
Total Grade-Level Change in Two Years, from October 2018 to October 2020	47	-156	-109
Total Grade-Level Change in Three Years, from October 2018 to October 2021	30	-163	-133
Total Grade-Level Change in Four Years, from October 2018 to October 2022	40	-133	-93
Total Grade-Level Change in Five Years, from October 2018 to October 2023	65	-94	-29

Table 2 (PowerPoint version): Actual and Projected Resident Student Populations for the Current Attendance Areas
(with color highlighting for actual and projected resident shifts by 25+; orange for negative and yellow for positive differences)

School	Actual Resident Student and Enrollment part				Projected Resident Student part					
	Actual Res. Stu. Shift in Last Year	Actual October 2018 (excluding TK)			Projected SMFCSD Students Residing in this Area in the Relevant Grades (excluding TK)					
		Resident Students	Attending Adjustment	Attending Enrollment	Early October of			Change to October of		
					2019	2020	2021	2019	2020	2021
San Mateo Park	-27	472	-107	365	478	482	472	6	10	0
Baywood	-11	714	-26	688	708	705	679	-6	-9	-35
Sunnybrae	-15	637	-253	384	621	633	646	-16	-4	9
Highlands	-14	617	-104	513	622	614	587	5	-3	-30
Meadow Heights	4	363	-41	322	371	378	388	8	15	25
Beresford	-11	290	-19	271	286	288	297	-4	-2	7
Laurel	40	663	-152	511	677	679	690	14	16	27
George Hall	2	421	-5	416	412	451	488	-9	30	67
LEAD	-65	677	-180	497	656	645	650	-21	-32	-27
Bayside (for K-5)	19	495	-242	253	501	521	522	6	26	27
Audubon	40	934	-171	763	940	941	939	6	7	5
Foster City	-39	914	-69	845	911	923	913	-3	9	-1
Brewer Island	2	437	108	545	440	434	421	3	-3	-16
Borel	-5	1,127	-65	1,062	1,126	1,096	1,127	-1	-31	0
Abbott	-23	833	-20	813	799	799	812	-34	-34	-21
Bayside (for 6-8)	9	600	71	671	574	551	518	-26	-49	-82
Bowditch	-2	1,070	-23	1,047	1,056	1,028	1,008	-14	-42	-62

Table 3 (PowerPoint version, page 1 of 2)
Comparison of Recent Total TK-8 Enrollment Changes in SMFCSD and Select Other Area Districts

Enrollment Subject	Fall of	Total Enrollments in TK-8 for Each District						
		San Mateo - Foster City	San Bruno Park	Millbrae	Burlingame	Hills-borough	Belmont - Redwood S.	San Carlos
Actual	2010	10,895	2,599	2,222	2,771	1,503	3,208	2,903
Actual	2011	11,195	2,626	2,321	2,901	1,521	3,381	2,984
Actual	2012	11,455	2,686	2,372	3,037	1,518	3,595	3,000
Actual	2013	11,706	2,785	2,445	3,234	1,519	3,714	3,028
Actual	2014	11,856	2,796	2,469	3,304	1,536	3,900	3,105
Actual	2015	11,977	2,727	2,436	3,353	1,490	4,063	3,158
Actual	2016	11,956	2,669	2,432	3,410	1,476	4,212	3,185
Actual	2017	11,835	2,641	2,433	3,507	1,408	4,307	3,165
Actual	2018	11,719	N/A	2,383	N/A	1,353	4,298	3,060
Net Average Actual Annual Difference:								
2010 to 2013		270	62	74	154	5	169	42
2013 to 2017		32	-36	-3	68	-28	148	34
2017 to 2018		-116	N/A	-50	N/A	-55	-9	-105
Net Average Actual Annual Pct. Change:								
2010 to 2013		2%	2%	3%	6%	0%	5%	1%
2013 to 2017		0%	-1%	0%	2%	-2%	4%	1%
2017 to 2018		-1%	N/A	-2%	N/A	-4%	0%	-3%

Table 3 (PowerPoint version, page 2 of 2)
Comparison of Recent Total TK-8 Enrollment Changes in SMFCSD and Select Other Area Districts

Enrollment Subject	Fall of	Total Enrollments in TK-8 for Each District						
		Menlo Park	Las Lomas	Woodside	Portola Valley	Sunnyvale	Cupertino	Santa Clara
Actual	2010	2,626	1,339	453	709	6,530	18,372	10,978
Actual	2011	2,710	1,362	446	708	6,649	18,645	10,982
Actual	2012	2,791	1,419	453	671	6,761	19,028	11,056
Actual	2013	2,898	1,384	435	652	6,849	19,184	11,238
Actual	2014	2,910	1,390	422	628	6,801	19,068	11,059
Actual	2015	2,940	1,382	409	628	6,641	18,924	11,079
Actual	2016	2,998	1,392	400	626	6,531	18,585	11,058
Actual	2017	2,969	1,342	411	608	6,565	18,001	11,066
Actual	2018	2,929	1,260	407	573	6,587	17,353	10,966
Net Average Actual Annual Difference:								
2010 to 2013		91	15	-6	-19	106	271	87
2013 to 2017		18	-11	-6	-11	-71	-296	-43
2017 to 2018		-40	-82	-4	-35	22	-648	-100
Net Average Actual Annual Pct. Change:								
2010 to 2013		3%	1%	-1%	-3%	2%	1%	1%
2013 to 2017		1%	-1%	-1%	-2%	-1%	-2%	0%
2017 to 2018		-1%	-6%	-1%	-6%	0%	-4%	-1%

Chart 2: Actual TK-5 Student Totals in San Mateo County Schools

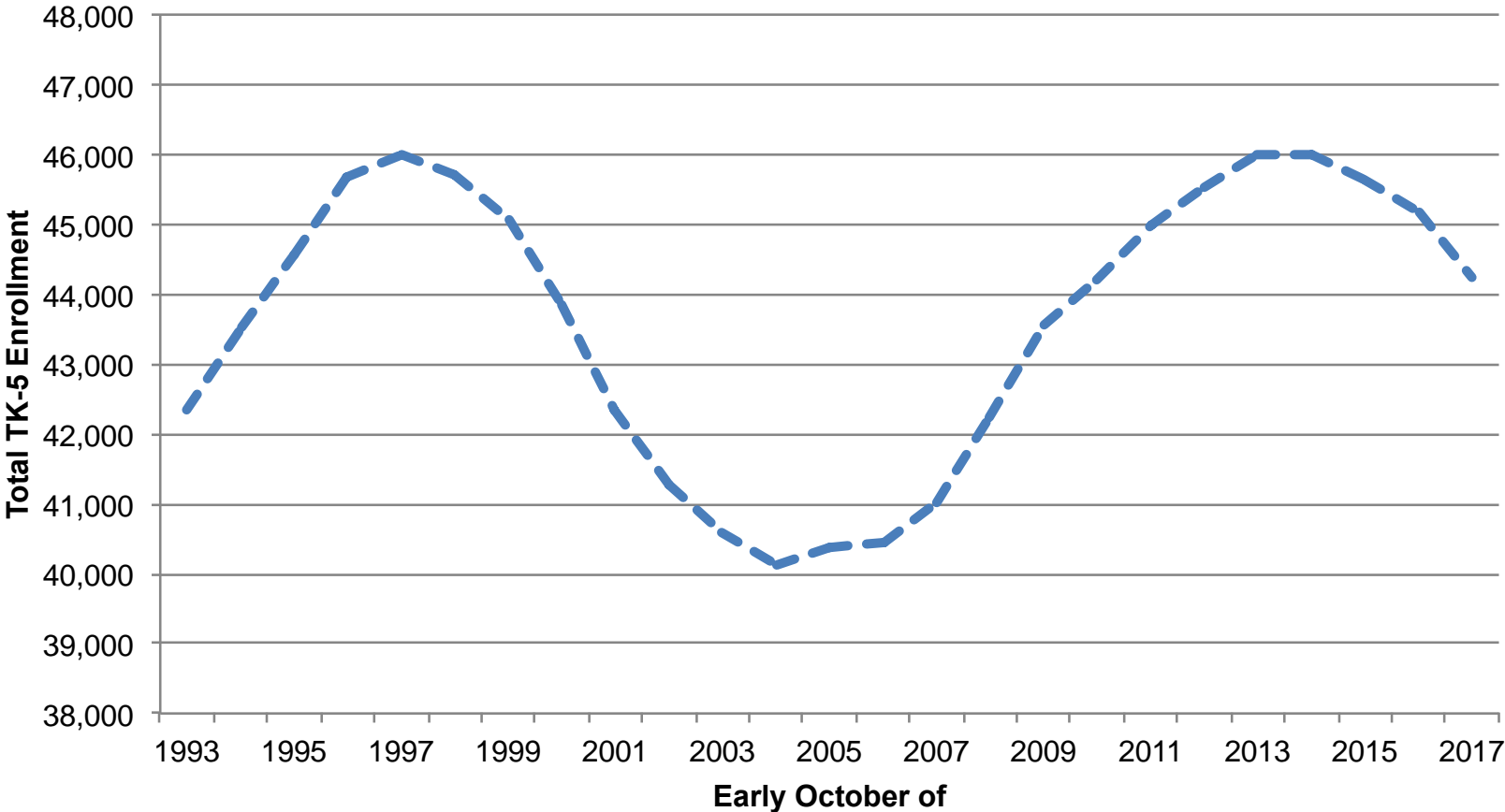


Chart 3: Actual Totals of TK-5 Students in Santa Clara County Schools

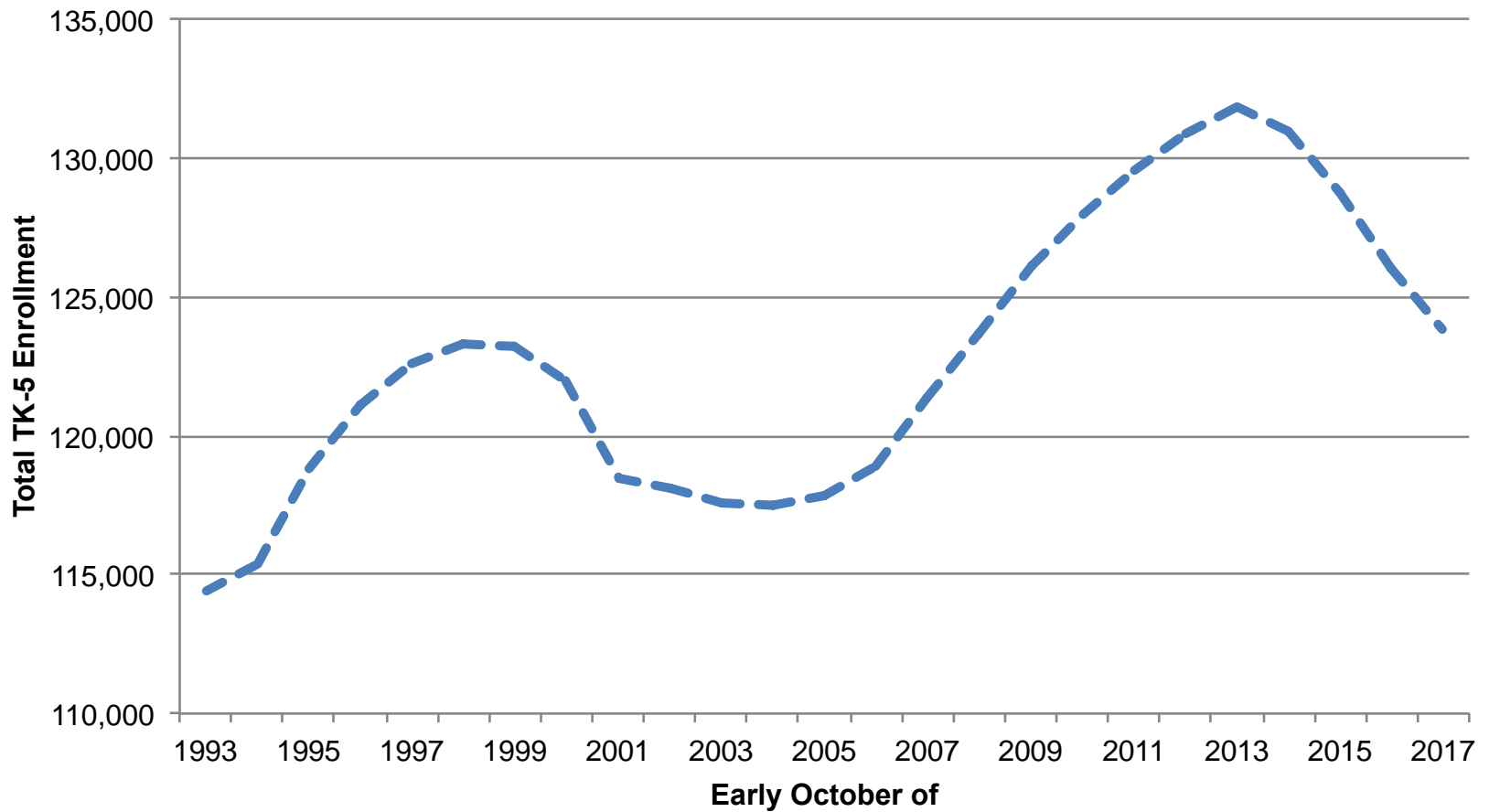


Table 4B (PowerPoint extract)

Resident Student Trends between Existing Dwellings, New Housing and Incoming Inter-District Attendance

(with gray highlighting for the highest recent K-2 and TK-8 totals)

Existing Housing Type/ Data Subject	Fall of	Resident District-Enrolled Students				% Change in TK-8
		K-2	3-5	6-8	TK-8	
Total for Areas with Virtually No New Housing added since Sept. 2014	2015	3,895	3,859	3,544	11,571	
	2016	3,916	3,721	3,603	11,505	
	2017	3,939	3,613	3,584	11,374	
	2018	3,847	3,614	3,563	11,250	
3-Year Change Within Grade Group		-48			-321	-3%
3-Year Change from Prior Grade Group			-281	-296		
Total for Areas with Consequential New Housing added since Sept. 2014 <i>(includes some areas that also contain older residences &/or demolished units)</i>	2015	58	54	62	178	
	2016	74	62	75	214	
	2017	87	75	67	234	
	2018	101	85	69	260	
3-Year Change Within Grade Group		43			82	NA
3-Year Change from Prior Grade Group			27	15		
All Other (incoming inter-district students and a few students at unlocatable addresses)	2015	74	104	44	228	
	2016	69	110	54	237	
	2017	55	103	67	227	
	2018	40	94	72	209	
3-Year Change Within Grade Group		-34			-19	-8%
3-Year Change from Prior Grade Group			20	-32		

Table 6 (PowerPoint version): Comparison of Local Births to Corresponding Kindergarten Student Populations

Birth Year and School Enrollment Date	Total Births in Zip Codes 94401-94404	SMFC-Enrolled Resident Kindergarten Population	Ratio of Kindergarten Population to Births
"2006" Births and Fall 2011 Kindergarten Students	1,898	1,417	75%
"2007" Births and Fall 2012 Kindergartners plus 100% of TK	1,961	1,504	77%
"2008" Births and Fall 2013 Kindergartners plus 50% of TK	1,916	1,427	74%
"2009" Births and Fall 2014 Kindergartners plus 33.3% of TK	1,897	1,370	72%
"2010" Births and Fall 2015 Kindergartners	1,895	1,398	74%
"2011" Births and Fall 2016 Kindergartners	1,877	1,375	73.3%
"2012" Births and Fall 2017 Kindergartners	1,870	1,373	73.4%
"2013" Births and Fall 2018 Kindergartners	1,828	1,304	71.3%
Average Relevant to Kindergarten in last Three Years (good correlation with only a 2% range)			72.7%

	note that totals below recover from "2013" low but stay below past peak	Potential SMFC-Enrolled Resident Kindergarten Total (excluding TK)	
		at 3-Year Avg. Ratio	at Current Ratio
"2014" Births and Potential Fall 2019 Kindergartners	1,855	1,348	1,362
"2015" Births and Potential Fall 2020 Kindergartners	1,887	1,371	1,385
"2016" Births and Potential Fall 2021 Kindergartners	1,886	1,371	1,385

Note: Years listed have proportionate birth amounts in the listed year and the prior year so as to properly correlate to the kindergarten eligibility period shown (five years later).

**Chart 4: Annual Births to Mothers Residing in the
94401-94404 Zip Code Areas, 1996 to 2016**

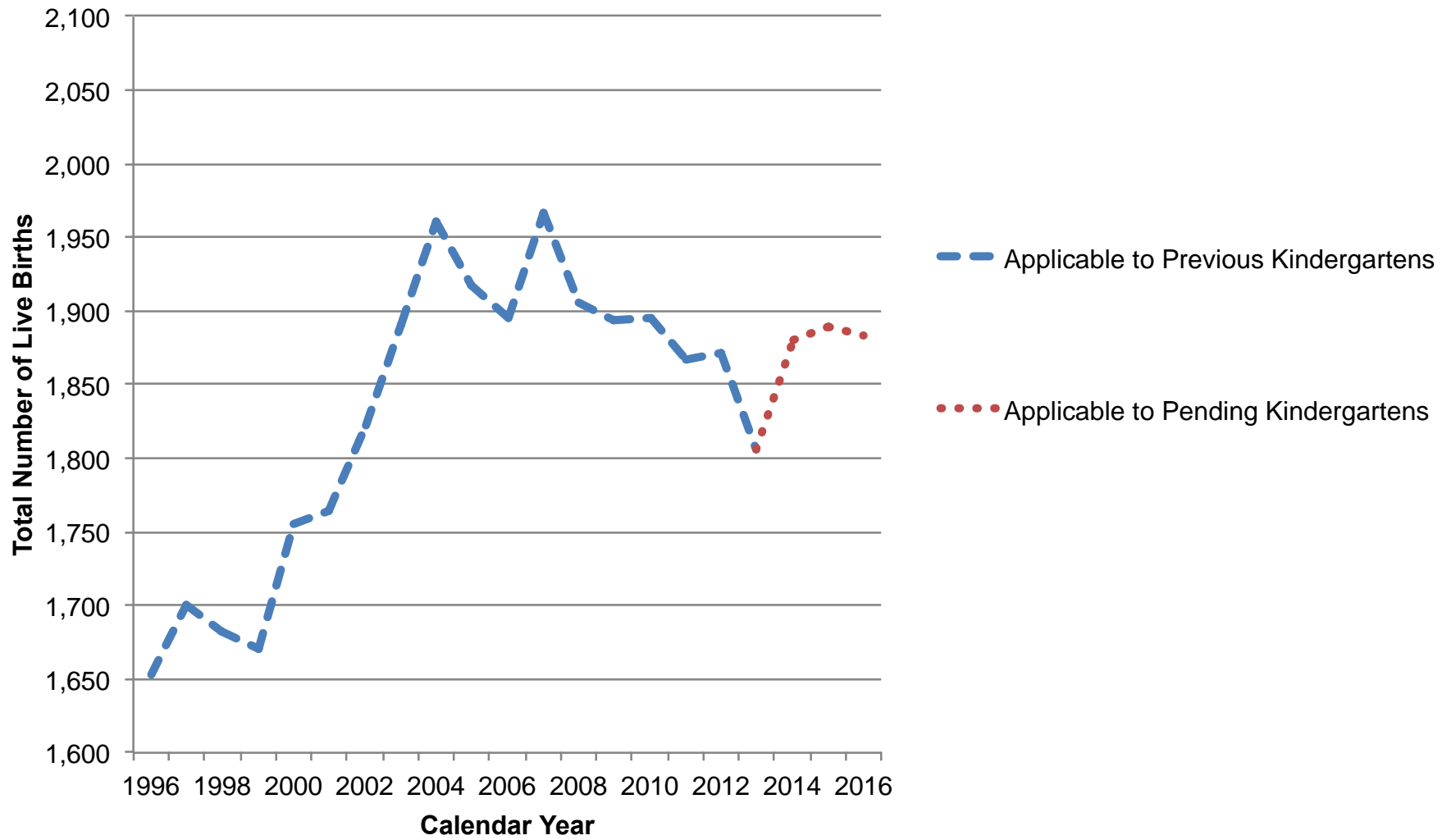


Chart 5: Total Annual Births to Mothers Residing in San Mateo County, 2006 to 2016

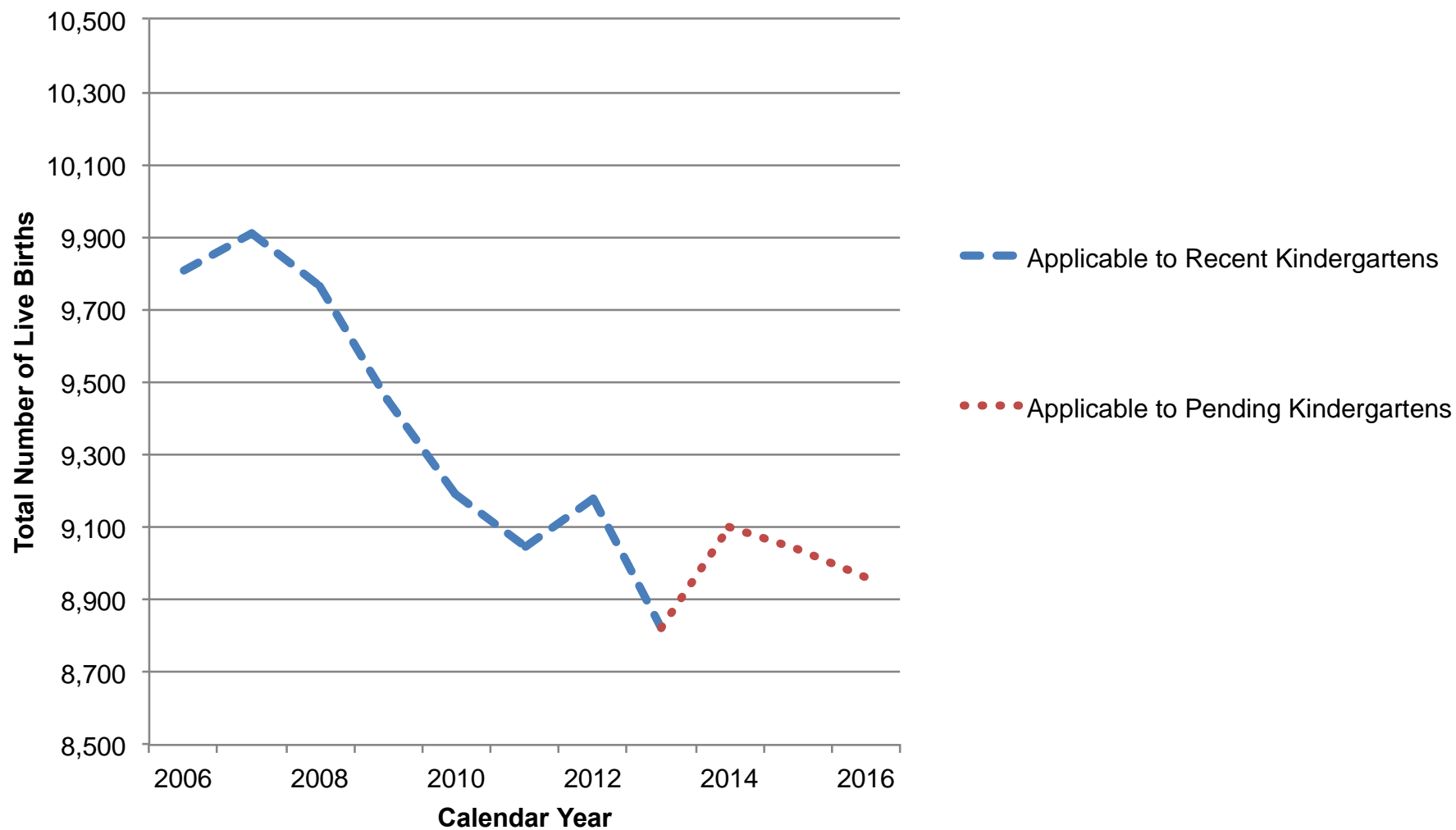


Table 7 (PowerPoint version)

Average Student Generation Rates (SGRs) from Sampled Recently Built Housing Units in the SMFCSD

Category of Recently Built Housing	Number of Units in Sample	Current District-Enrolled Resident Student Population by Grade Range				Current TK-8 SGR
		TK-2	3-5	6-8	TK-8	
Mainly Market-Rate Developments in:						
City of San Mateo	1,168	33	23	12	68	0.06
City of Foster City	466	34	29	24	87	0.19
Mainly BMR Developments	122	23	26	31	80	0.66

Table 8 (PowerPoint version): Projected Additional Dwelling Units

Housing Developments	Projected Additional Residences (excluding units for seniors) in Twelve Months to October 1 of					Total
	2019	2020	2021	2022	2023	
Mainly Market-Rate Developments in:						
City of San Mateo	338	383	436	372	371	1,900
City of Foster City	108	20	20	46	26	220
Mainly BMR ATT Developments	0	32	44	82	82	240
Total	446	435	500	500	479	2,360

Additional information, including footnotes, for each of these PowerPoint tables can be found in the corresponding tables provided with the written report.